



Operating Instructions and Parts Manual 20" Electronic Variable Speed Drill Press

Models: JDP-20EVS-110, JDP-20EVST-230,-460

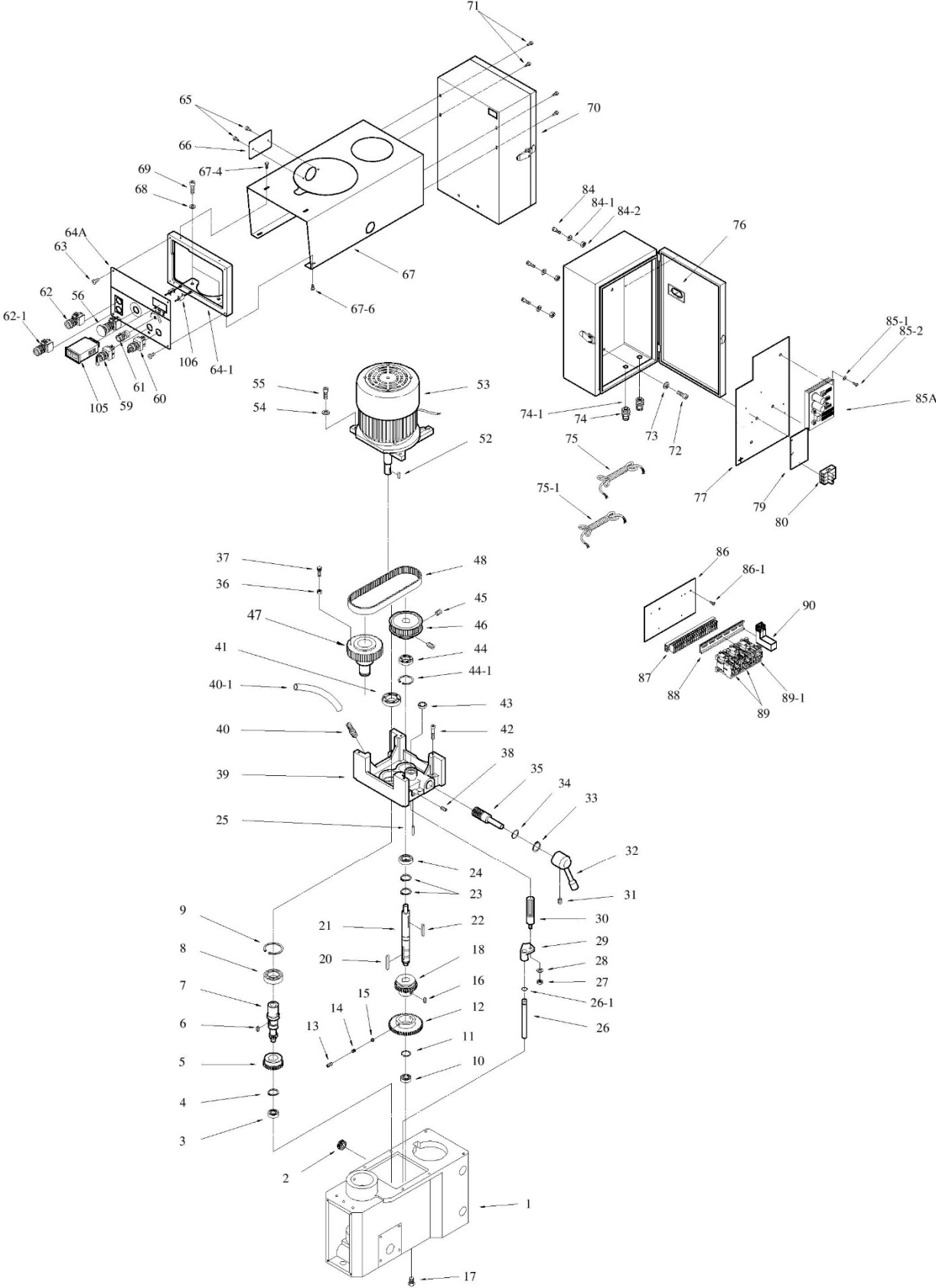


JDP-20EVST-230 shown

JET
427 New Sanford Road
LaVergne, Tennessee 37086
Ph.: 800-274-6848
www.jettools.com

Part No. M-354220
Edition 4 10/2018
Copyright © 2018 JET

12.1.1 JDP-20EVS-110 Top Head Assembly – Exploded View

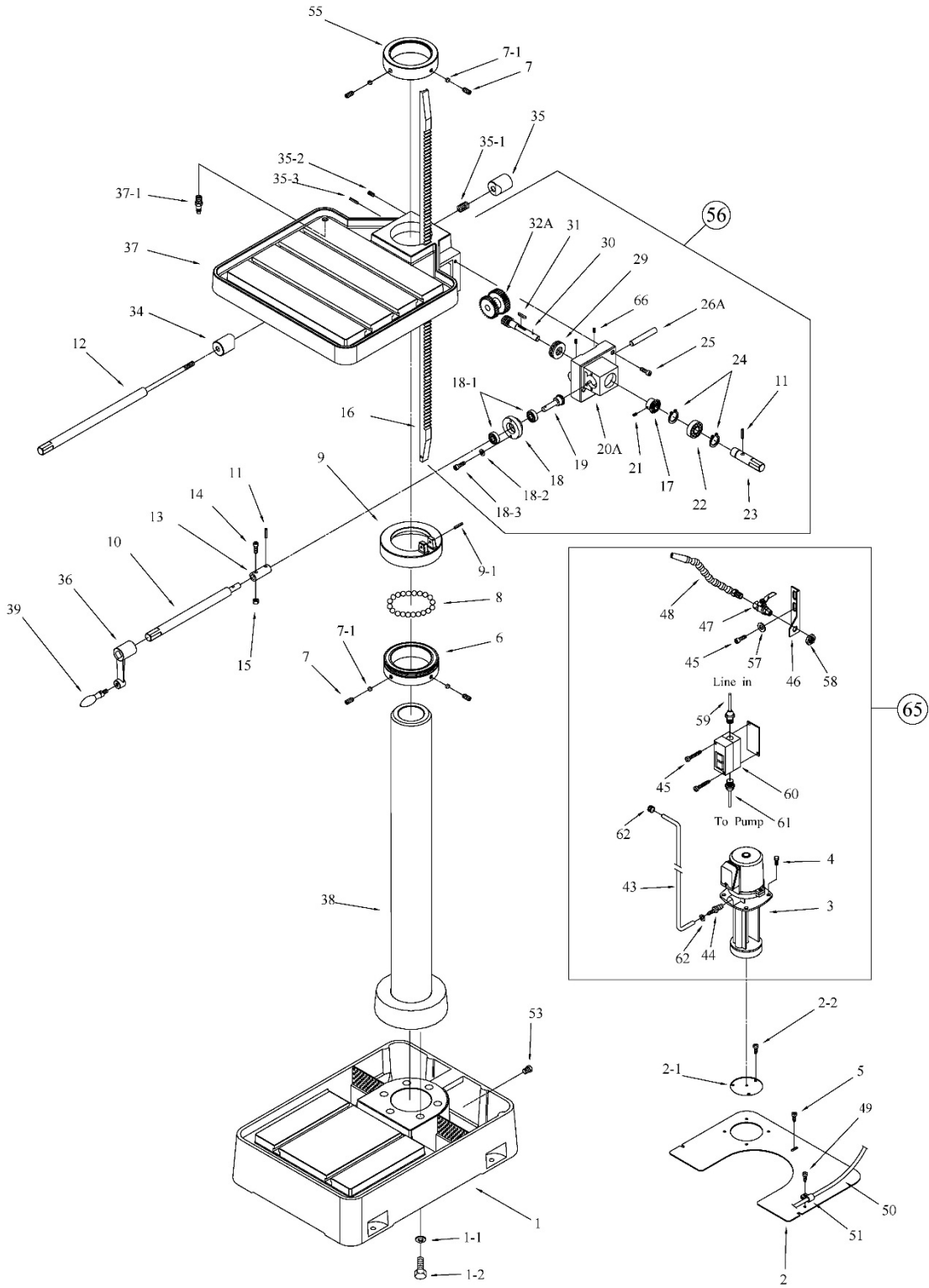


12.1.2 JDP-20EVS-110 Top Head Assembly – Parts List

Index No.	Part No.	Description	Size	Qty
1	J-5517332ACG	Head Casting		1
2	5510142	Oil Window		1
3	5510143	Ball Bearing		1
4	5510144	Retaining Ring		1
5	5510145	Gear	32T	1
6	5510146	Key		1
7	5510147	Drive Shaft	13T	1
8	5510148	Ball Bearing		1
9	5510149	Retaining Ring		1
10	5510150	Ball Bearing		1
11	5510151	Retaining Ring		1
12	5510153	Gear	55T	1
13	5510152	Set Screw		1
14	5510155	Spring		1
15	5510154	Steel Ball		1
16	5510159	Key		1
17	5517333	Drain Plug	3/8 NPT	1
18	5510158	Gear	18T	1
20	5510160	Key		1
21	5510161	Mid Shaft		1
22	5510162	Key		1
23	5510163	Retaining Ring		2
24	5510164	Ball Bearing		1
25	5510165	Pin		1
26	5510166	Bar		1
26-1	5517334	Ring		1
27	5510167	Hex Nut		1
28	5510168	Spring Washer		1
29	5510169	Speed Change Block		1
30	5510170	Gear Bar		1
31	5510171	Set Screw		1
32	5517335	Speed Lever		1
33	5517336	Retaining Ring		1
34	5510173	Oil Seal		1
35	5510177	Gear Shaft	18T	1
36	5517337	Hex Nut		1
37	5517338	Cap Screw		1
38	5510178	Set Screw		1
39	5517339	Gearbox Top Cover		1
40	5510180	Oil Fill Fitting		1
40-1	5517340	Fill Tube		1
41	5510181	Oil Seal		1
42	5510182	Bolt		1
43	5510183	Oil Seal		1
44	5510184	Oil Seal		1
44-1	5517341	Retaining Ring		1
45	5510185	Set Screw		1
46	5510186	Drive Pulley		1
47	5517342N	Spindle Pulley with Driving Sleeve	48T	1
48	5517343	Belt	720x8	1
52	5510192	Key		1
53	J-5517349	Motor	2HP, 3PH, 220V	1
54	5510194	Washer		4
55	5510195	Screw		4
56	5510204	E-stop Switch		1
59	5510199	Pump Selector Switch		1
60	5510200	Forward/Reverse Switch		1
61	5510196	Speed Control Potentiometer		1
62	20EVS-T61	Stop switch		1
62-1	5510202	Green Pushbutton Switch		1
63	5510206	Screw		4
64A	JDP20EVS110-64A	Control Panel		1

Index No.	Part No.	Description	Size	Qty
64-1	5517352	Plate Bracket		1
65	5510209	Pan Head Screw		2
66	5510210	Oil Filler Cover		1
67	J-5517353	Pulley Cover		1
67-4	5510215	Pan Head Screw		2
67-6	5517357	Screw		2
68	5510216	Spring Washer		2
69	5510217	Screw		2
70	J-5517359	Enclosure (w/door & latch)		1
71	5510219	Screw		4
72	5510220	Bolt		4
73	5517360	Washer		4
74	5510222	Cable Relief		1
74-1	5517361	Cable Relief		1
75	5510223	Electric Cable (to power)	3x14AWG 300V	1
75-1	5517362	Electric Cable (to work light)	3x16AWG 300V	1
76	5510224	Window Cover		1
77	5517363	Component Mounting Panel		1
79	5510227	Insulation Board		1
80	5510228	Fuse Block		1
84	5517366	Cap Screw		4
84-1	5517367	Lock Washer		4
84-2	5517368	Hex Nut		4
85A	JDP20EVS-110/85A	PC Board		1
85-1	5517371	Flat Washer		4
85-2	5517372	Screw		4
86	5517373	Sub-Panel		1
86-1	5517374	Screw		4
87	5510235	Terminal Block		1
88	5517375	Mounting Rail		1
89	5510237	Contact		2
89-1	JDP20EVS-110/POR	Pump Overload Relay		1
90	5510240	Relay		2
105	JDP20EVST-105	LED Display	110V	1
106	5513683	Cap Screw		2
	LM000227	ID/Warning Label, JDP-20EVS-110 (not shown)		1
	JET-113	JET Logo (not shown)	113x47mm	1

12.2.1 JDP-20EVS-110 Table and Base Assembly – Exploded View

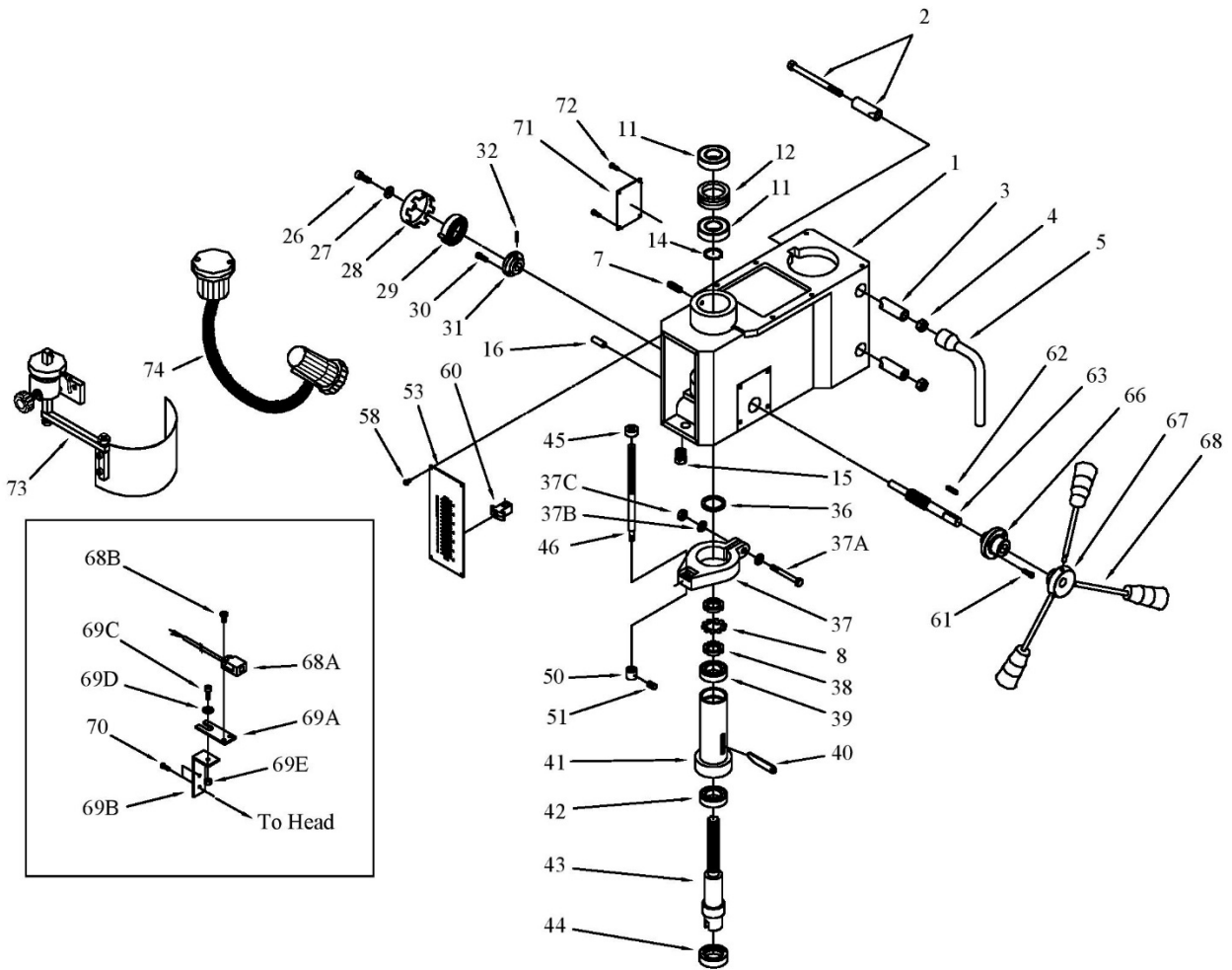


12.2.2 JDP-20EVS-110 Table and Base Assembly – Parts List

Index No.	Part No.	Description	Size	Qty
1	J-5510288A	Base		1
1-1	TS-0720111	Lock Washer	1/2"	10
1-2	TS-0070031	Hex Cap Screw	1/2" x 1-1/2"	10
2	J-5510289	Coolant Cover Plate		1
2-1	5518263	Small Cover		1
2-2	20EVS-C4	Screw w/Washer	1/4"	3
3	5510456	Coolant Pump	115V/230V, 1P	1
4	TS-1482011	Hex Bolt	M6x10	4
5	5517388	Pan Head Screw		3
6	5510293A	Ball Seat		1
7	5510294	Set Screw	3/8"	4
7-1	5517389	Brass Block		4
8	5510295	Ball Bearing	3/8"	38
9	J-5510296A	Lock Ring		1
9-1	5517390	Pin	M4	1
10	5516859	Table Raiser Shaft		1
11	5510298	Spring Pin	4x20	1
12	5516858	Table Clamp Shaft		1
13	5516860	Table Raiser Coupling		1
14	5510300	Socket Head Screw		1
15	TS-0561011	Nut	1/4"	1
16	5510302	Rack		1
17	5514663	Large Bevel Gear		1
18	5517391	Bearing Housing		1
18-1	BB-6202ZZ	Ball Bearing	6202ZZ	2
18-2	TS-0720071	Washer	1/4"	2
18-3	TS-1482041	Cap Screw	M6x20	2
19	5510304	Small Bevel Gear		2
20A	J-5510305A	Bracket Cover		1
21	TS-0267041	Set Screw	1/4"x3/8"	1
22	BB-6005ZZ	Ball Bearing	6005zz	1
23	5510308	Shaft		1
24	5510309	C-Ring	S25	2
25	TS-1504071	Hex Socket Cap Screw	M8x35	3
26A	5510311A	Shaft		1
29	BB-51102	Bearing	51102	1
30	5510315	Table Raise Worm		1
31	5510316	Key	4x4x20	1
32A	5510317A	Worm Gear Assembly		1
34	5510319	Front Cam Lock		1
35	5510320	Rear Cam Lock		1
35-1	5517396	Spring		1
35-2	TS-1523071	Set Screw	M6x25	1
35-3	5517398	Pin	5x25	2
36	J-5510321	Table Raise Crank		2
37	JDP20VST-37	Table		1
37-1	5517399	Hose Coupler (Return)	1/2"	1
38	5510323A	Column		1
39	5510324	Table Raise Handle		1
43	5510328	Clear Vinyl Hose	3/8"	1
44	5510329	Hose Coupler (Supply)	3/8"	1
45	5512112	Socket Head Cap Screw	#10-32 x 1"	4
46	5510331	Mounting Bracket		1
47	5510332	Valve		1
48	5510333	Flexible Nozzle		1
49	5517400	Pan Head Screw		1
50	5517401	Clear Vinyl Hose	1/2"	1
51	5517402	Hose Clamp		1
53	5517404	Drain Plug	3/8 NPT	1
55	J-5517406	Rack Collar		1
56	5513932	Table Raiser Assembly		1
57	9057451	Flat Washer	#10	2
58	5517488	Hex Nut	1/2"	1

Index No.	Part No.	Description	Size	Qty
59	5517489	Power Cord		1
60	5517490	Switch Assembly		1
61	5517491	Pump Cord	1 Phase	1
62	5517493	Hose Clamp, Rad. Type		2
65	5512104	Coolant System Complete	1/8 HP, 115V, 1 Phase	1
66	TS-1522021	Socket Set Screw	M5 x8	2
	J2221-SBCA	Support Bearing Collar Assembly (includes #6,7,7-1,8,9,9-1)		1

12.3.1 Spindle Components (all models) – Exploded View

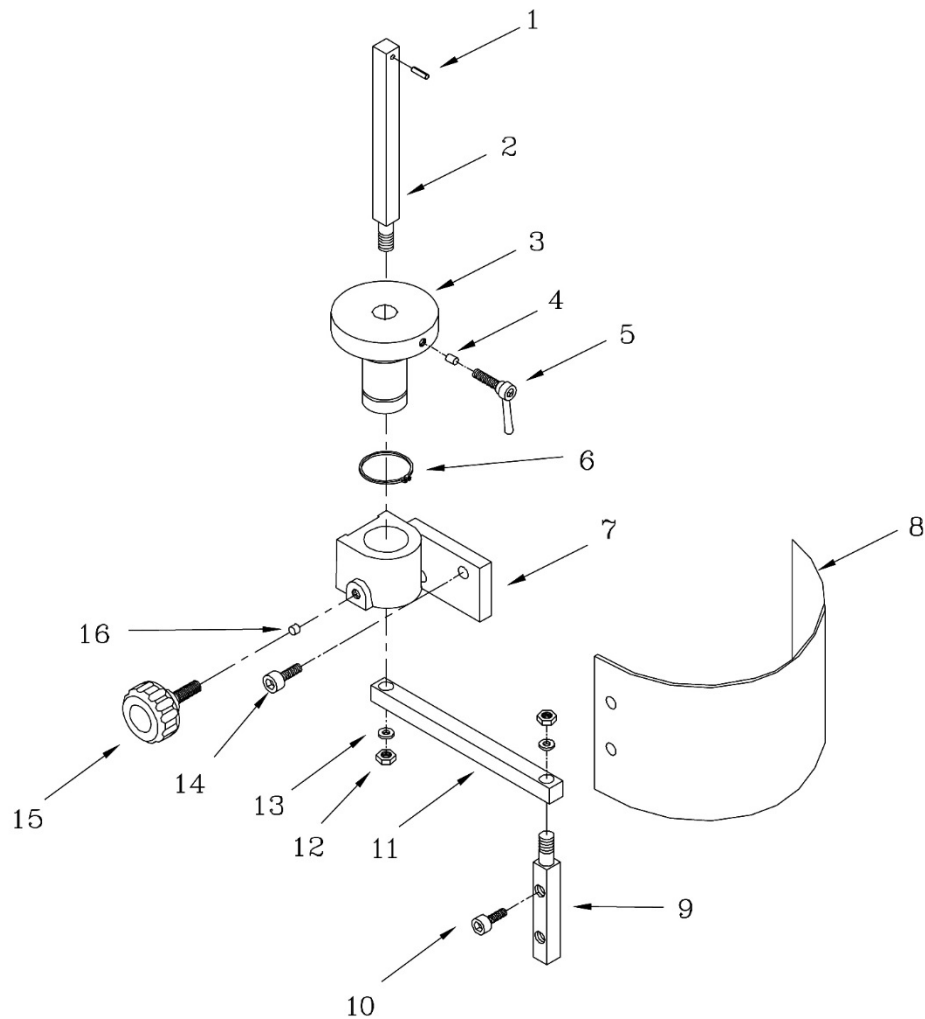


12.3.2 Spindle Components (all models) – Parts List

Index No.	Part No.	Description	Size	Qty
1	J-5517332ACG	Head Casting		1
2	5517376	Hex Shoulder Bolt		2
3	5517378	Cam Lock Rod		2
4	5510250	Hex Nut		2
5	5510251	Hex Head Wrench		1
7	5510252	Set Screw		1
8	5517379	External Tooth Washer		1
11	5510254	Ball Bearing		2
12	5510255	Spacer		1
14	5510256	C-Ring		1
15	5510258	Set Screw		1
16	5510259	Roll Pin		1
26	5510261	Socket Head Screw		1
27	5510262	Washer		1
28	5510263	Container (includes #29)		1
29	5510263	Return Spring		1
30	5510265	Socket Head Screw	3/16x1/2	3
31	5510266	Spring Seat		1
32	5510267	Spring Pin		1
36	5513770	Rubber Washer		1
37	J-5513771G	Quill Band		1

Index No.	Part No.	Description	Size	Qty
37A.....	5517380.....	Hex Shoulder Bolt.....		1
37B.....	5517381.....	Flat Washer.....		2
37C.....	5517382.....	Hex Nut.....		1
38.....	5513772.....	Lock Nut.....		2
39.....	5513773.....	Ball Bearing.....		1
40.....	5513774.....	Drift Pin.....		1
41.....	5510268.....	Quill.....		1
42.....	5510269.....	Ball Bearing.....		1
43.....	5510270.....	Spindle.....		1
44.....	5510271.....	Oil Seal.....		1
45.....	5510272.....	Nut.....		1
46.....	5510273.....	Depth Rod.....		1
50.....	5510276.....	Retainer.....		1
51.....	TS-1523011.....	Set Screw.....	M6x6.....	1
53.....	5510278.....	Depth Scale.....		1
58.....	5510279.....	Round Head Cap Screw.....		4
60.....	5510280.....	Key.....		1
61.....	5510281.....	Socket Head Screw.....		3
62.....	5510282.....	Key.....		1
63.....	5510283.....	Feed Shaft.....		1
66.....	5510284G.....	Feed Shaft Seat.....		1
67.....	J-5510285G.....	Hub.....		1
68.....	5510286-RHA.....	Rubber Handle Assembly.....		3
68A.....	5513515.....	Magnetic Pickup.....		1
68B.....	5513687.....	Pan Head Screw.....		2
69A.....	5517383.....	Adjustable Plate.....		1
69B.....	5517384.....	Mag. Pickup Bracket.....		1
69C.....	5513689.....	Cap Screw.....		1
69D.....	5517385.....	Flat Washer.....		1
69E.....	5517386.....	Hex Nut.....		1
70.....	5517387.....	Screw.....		2
71.....	5511849.....	Cover.....		1
72.....	5513354.....	Screw.....		4
73.....	32106A.....	Safety Shield Assembly.....		1
74.....	JDP20VST-WL.....	Work Light.....	input 110V.....	1

12.4.1 Safety Shield Assembly (all models) – Exploded View



12.4.2 Safety Shield Assembly (all models) – Parts List

Index No.	Part No.	Description	Size	Qty
.....	32106A.....	Safety Shield Assembly (includes #1 thru 16).....		1
1.....	6293347.....	Spring Pin.....	3x16.....	1
2.....	32106A-2.....	Support Bracket Bar.....		1
3.....	32106A-3.....	Bushing.....		1
4.....	32106A-4.....	Spacer.....		1
5.....	32106A-5.....	Lock Handle.....	M6x20.....	1
6.....	32106A-6.....	C-Clip.....	S30.....	1
7.....	32106A-7.....	Bracket.....		1
8.....	32106A-8.....	Safety Shield.....	530x210mm.....	1
9.....	32106A-9.....	Lower Bracket Bar.....		1
10.....	TS-1504021.....	Hex Socket Head Cap Screw.....	M8x12.....	1
11.....	32106A-11.....	Support Arm.....		1
12.....	TS-0640091.....	Hex Nut.....	3/8".....	1
13.....	TS-0720091.....	Spring Washer.....	3/8".....	1
14.....	TS-1504041.....	Hex Socket Head Cap Screw.....	M8x20.....	1
15.....	32106A-16.....	Lock Bolt with Knob.....	M8.....	1
16.....	32106A-17.....	Spacer.....		1