

PARTS LEGEND 3175 RC, 404000

3175/45 RCQ, 405100 (Europe)

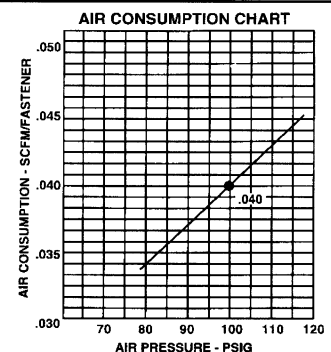
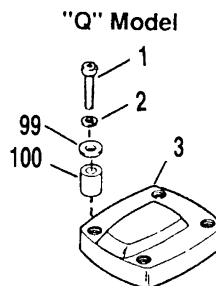
1	092735	4	Socket Head Capscrew, 1/4-20 x 1-1/4" (3175RC)	48	404091	2	Wear Shield, Nose
	091362	4	Socket Head Capscrew, 1/4-20 x 1-1/2" (3175/45 RCQ)	▲ 49	091545	4	Socket Head Capscrew, 1/4 - 20 x 7/8"
2	002187	8	Lock Washer, 1/4"	50	404012	1	Holdback Claw
3	402726	1	Air Diffuser (3175RC)	51	404014	1	Door
	404242	1	Air Diffuser (3175/45 RCQ)	52	404013	1	Front Guide
*4	402782	2	Wear Shield Cap	53	404663	1	Spring, Work Contacting Element
▲ 5	006310	1	Socket Head Capscrew, #6-32 x 1/2"	*54	402031	1	"O" Ring
→ 6				55	405234	1	Piston, Feed Claw
7	402704	1	Cap	*56	092709	1	"O" Ring
8	402717	1	Conical Spring	57	096815	1	Spring
9	404230	1	Retaining Ring	58	403572	1	Bumper, Feed Claw Piston
*10	091537	1	"O" Ring, Main Valve Assembly	59	405233	1	Piston Guide
11	404122	1	Upper Valve Piston	60	403573	1	Retaining Ring
12	404055	1	Post, Main Valve	61	402486	1	Retaining Washer
*13	404256	1	"O" Ring, Main Valve Post	▲ 62	009037	2	Socket Head Capscrew, #10-32 x 1/2"
*14	402723	1	"O" Ring, Piston	63	402629	3	Hardened Washer, #10
15	403582	1	Lock Nut, Gripco, 5/16-24	64	404002	1	Grommet, Debris Shield
16	403563	1	Piston	65	404003	1	Intermediate Work Contacting Element
*17	404001	1	Driver Blade	66	402488	1	Pivot Pin, Feed Claw
18	402725	1	Seal, Sleeve	67	402041	1	Torsion Spring, Feed Claw
19	405245	1	Sleeve	68	405238	1	Feed Claw
*20	091966	1	"O" Ring, Sleeve	69	404004	1	Work Contacting Element
*21	402729	1	"O" Ring, Sleeve	**70	400658	1	Warning Label
22	403854	1	Retaining Bumper	71	404015	1	Cover, Magazine
*23	403853	1	Bumper	*72	404092	2	Wear Shield, Magazine
24	402707	1	Gasket, Cap	*73	404093	1	Debris Shield
25	402701	1	Housing	74	403579	1	Roll Pin, 1/16" Dia. x 1/2" Lg.
26	404939	2	Logo, Housing	75	403568	1	Cap, Post
	405118	2	Logo, Housing (3175/45 RCQ)	76	402071	1	Extension Spring, Post
27	096893	1	Nameplate	77	403543	1	Nail Plate Assembly
	405553	1	Nameplate (3175/45 RCQ)	78	404731	1	Center Post, Outer
28	402708	1	Gasket, Nose	79	403580	1	Retaining Ring
29	405147	1	Lever, Trigger	80	403556	1	Center Post, Inner
30	405144	1	Trigger	81	405243	1	Flange, Sleeve
31	500488	1	Grip, Handle	82	404016	1	Magazine
32	005849	1	Roll Pin	83	404303	1	Socket Head Capscrew, #10-32 x 1 1/4"
33	402079	1	Pin, Trigger	84	006057	3	Flat Washer, #10
34	404325	1	Stop Nut	85	006621	1	Socket Head Capscrew, #10 32 x 7/8"
35	026133	2	Roll Pin, 1/8" Dia. x 1" Lg.	86	404019	1	Nut, Shingle Guide
36	404017	1	Magazine Bracket	*87	404020	1	Shingle Guide
▲ 37	004502	4	Socket Head Capscrew, #10-32 x 5/8"	▲ 88	004224	3	Socket Head Capscrew, #10-32 x 3/8"
38	092037	9	Flexloc Nut, #10-32	89	404018	1	Bracket, Shingle Guide
39	097748	2	Spring	90	404361	1	Roll Pin, 1/8" Dia. x 1/2" Lg.
40	097746	1	Valve Pin	92	404054	1	Seal, Main Valve
*41	092174	1	"O" Ring, Valve Body	*93	090927	1	"O" Ring, Main Valve
42	401958	1	Valve Body	*94	092775	1	"O" Ring, Main Valve
*43	091591	1	"O" Ring, End Plug	*95	092773	1	"O" Ring, Main Valve
▲ 44	401940	1	End Plug	96	404056	1	Lower Valve Piston
45	091622	1	Reducing End Plug	97	404010	1	Magnet
46	404007	1	Nose Assembly With Magnet	98	405524	1	Fastener Label (3175/45 RCQ)
47	404106	1	Socket Head Capscrew, #10-32 x 2"	99	091447	4	Flat Washer (3175/45 RCQ)
				100	404243	4	Spacer (3175/45 RCQ)
				101	402728	1	"O" Ring

** NOTE: Make sure Warning Label (400658) is properly affixed. Replace if necessary. Label available at no charge through Service Department.

* Denotes normal wear items

▲ Apply Loctite 242 (Blue) Part No. 093500

→ Denotes New Change

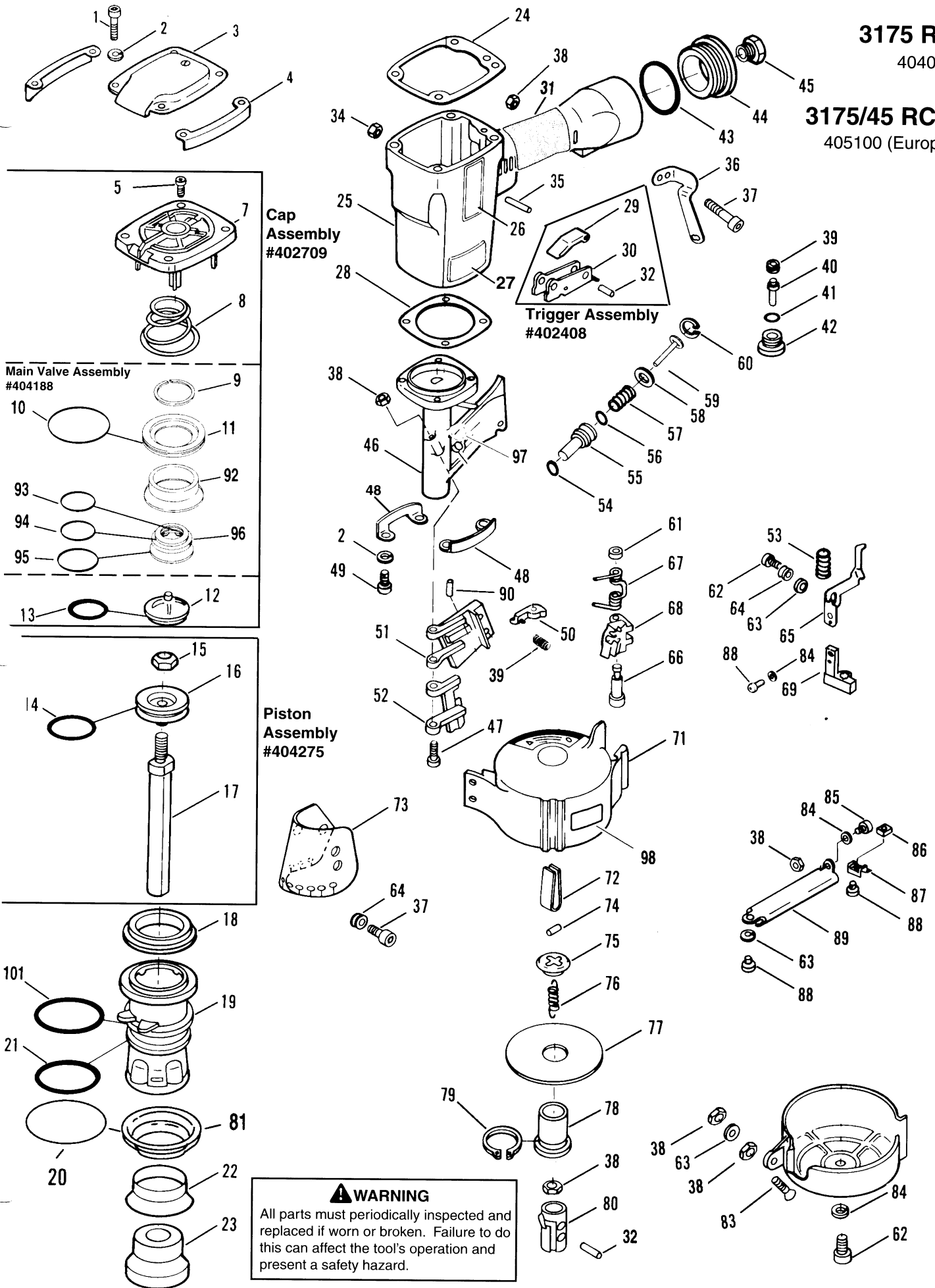


3175 RC

404000

3175/45 RCQ

405100 (Europe)



WARNING
All parts must periodically inspected and replaced if worn or broken. Failure to do this can affect the tool's operation and present a safety hazard.