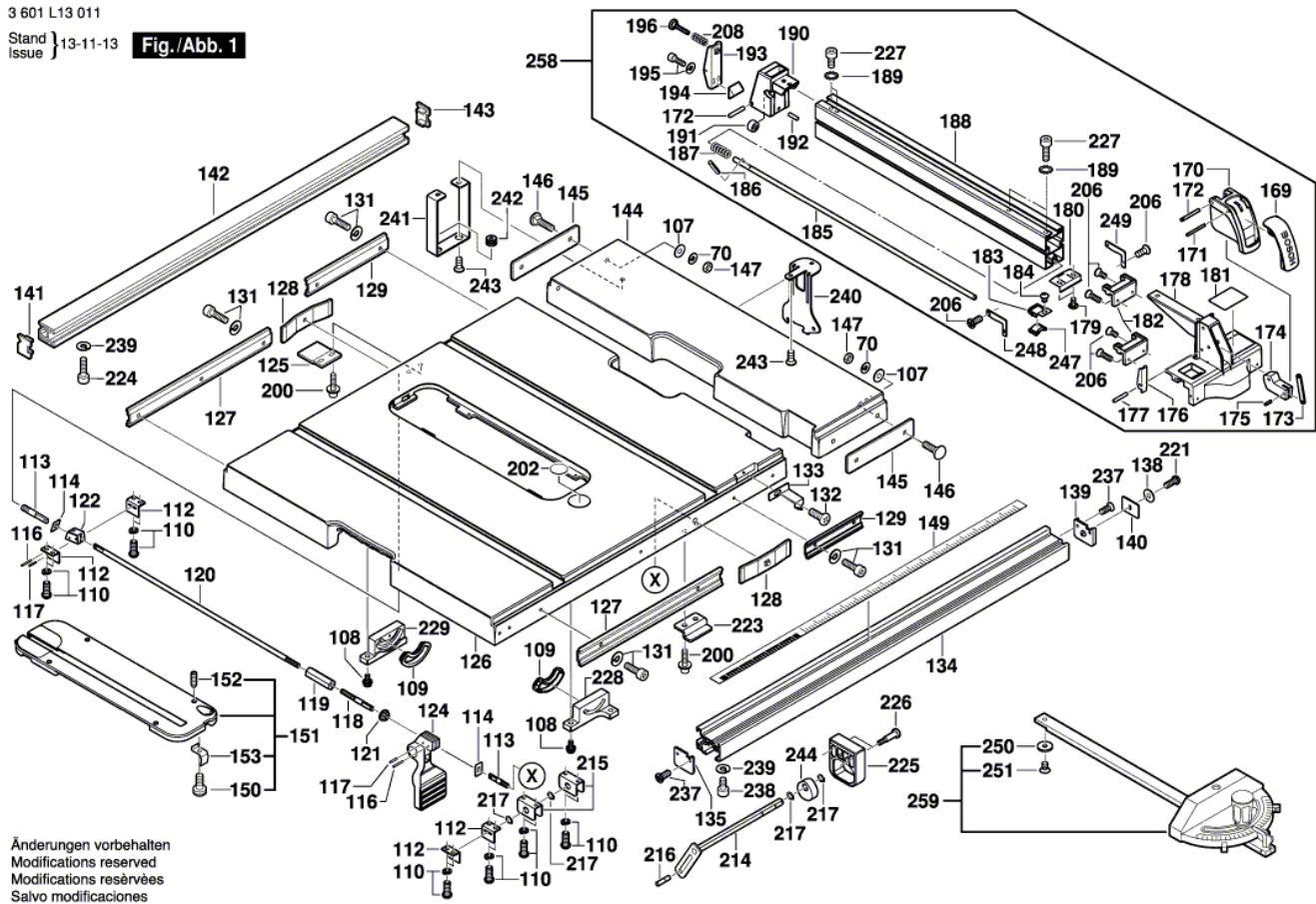




3 601 L13 011

Stand Issue 13-11-13

Fig./Abb. 1

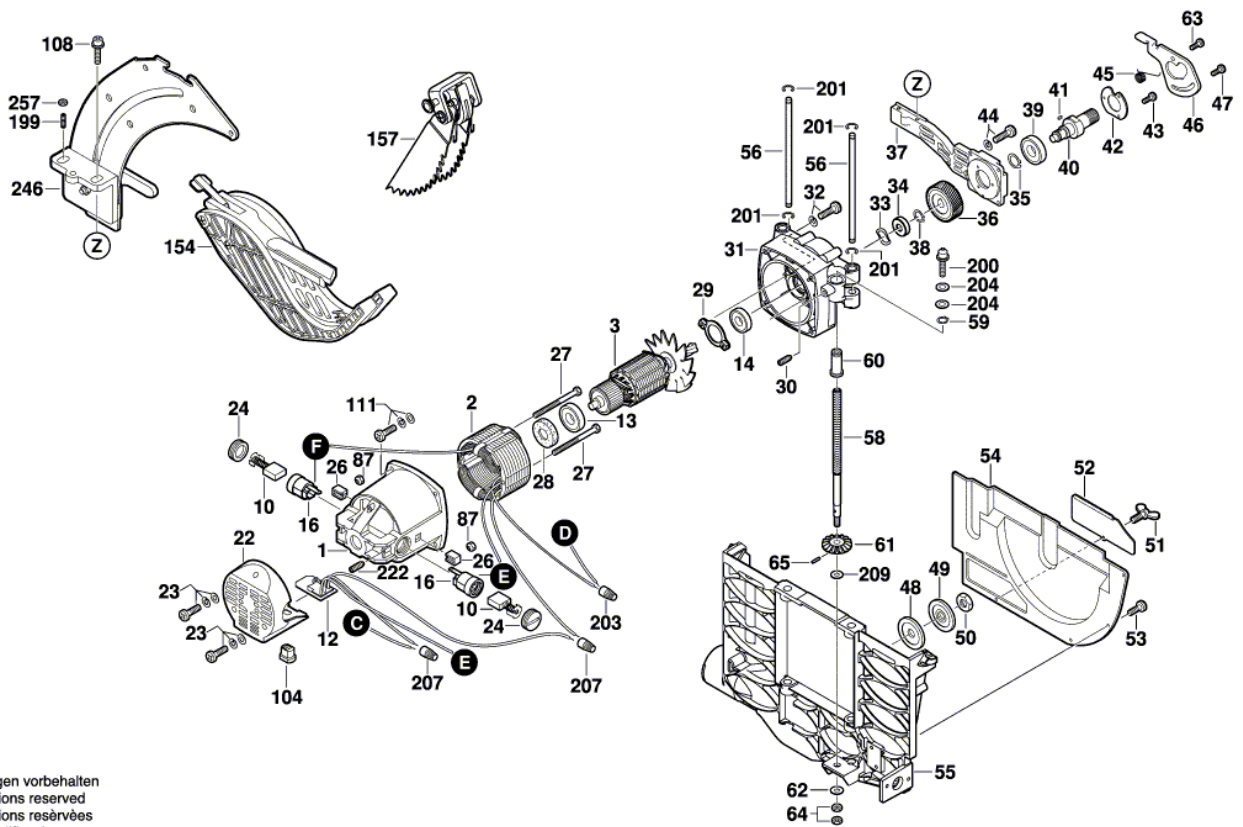


Änderungen vorbehalten
Modifications reserved
Modifications réservées
Salvo modificaciones



3 601 L13 011

Stand } 13-11-13 Fig./Abb. 2
issue }



Änderungen vorbehalten
Modifications reserved
Modifications réservées
Salvo modificaciones



Pos.	Part Number	Description	Pos.	Part Number	Description
1	1 619 PA8 038	Motor Spare Parts Set	65	2 610 950 054	Pin
2	1 619 PA5 590	Field	66	2 610 997 277	Spring retaining ring
3	1 619 PA5 591	Armature	67	2 610 997 212	Mounting Bracket
4	2 610 008 538	Switch	68	2 610 997 222	Bushing
5	2 610 996 945	Power supply cord	70	2 610 355 325	Spring Washer
6	2 610 950 038	Grommet	72	2 610 996 933	Threaded Bushing
7	2 610 358 842	Clamp	73	2 610 996 938	Bushing
8	1 619 PA5 595	Nameplate	74	2 610 950 055	Screw
9	2 610 950 040	Label	75	2 610 997 271	Spring
10	2 610 997 207	Carbon-Brush Set	76	2 610 998 550	Plain Washer
12	2 610 997 306	Speed governor	77	2 610 950 114	Washer
13	2 610 004 595	Ball Bearing	78	2 610 997 298	Nut
14	2 610 911 927	Ball Bearing	79	1 619 PA3 395	Clamping Lever
16	2 610 013 003	Brush Holder	81	2 610 950 058	Screw
19	2 610 358 841	Hex Screw	82	2 610 950 059	Handle
20	2 610 950 041	Warning Label	83	2 610 950 060	Screw
21	2 610 015 359	Screw	84	2 610 950 061	Screw
22	2 610 996 865	Cover	85	2 610 950 062	Pointer
23	2 610 018 983	Screw	86	2 610 347 092	Plain Washer
24	2 610 916 802	Brush-Cover	87	2 610 911 901	Self-locking nut
26	2 610 911 569	Insert	89	2 610 996 929	End stop
27	2 610 911 929	Screw	90	2 610 950 063	Housing
28	2 610 996 948	Rubber Ring	91	2 610 997 294	Screw
29	2 610 911 566	Bearing cover	92	2 610 950 064	Switch Cover
31	2 610 996 863	Gear Housing	93	2 610 358 846	Rubber Bushing
32	2 610 945 505	Screw	94	2 610 996 930	Pickup Clip
33	2 610 950 042	Spring Washer	95	2 610 950 065	Holding Spring
34	2 610 996 949	Ball Bearing	96	2 610 950 066	Screw
35	2 610 997 282	Spring retaining ring	97	2 610 990 504	Cable Clip
36	2 610 997 208	Toothed Gear	98	2 610 950 067	Screw
37	2 610 996 869	Gear Cover	99	2 610 997 246	Nut
38	2 610 997 281	Spring retaining ring	100	2 610 996 880	Box Wrench
39	2 610 997 210	Ball Bearing	101	2 610 997 247	Wing Nut
40	2 610 950 043	Shaft	102	2 610 950 141	Clamp
41	2 610 012 984	Woodruff Key	103	2 610 998 574	Screw
42	2 610 996 932	Bearing Sleeve	104	2 610 998 567	Clamp Bushing
43	2 610 950 044	Screw	105	2 610 998 568	Connecting Cable
44	2 610 998 572	Screw	106	2 610 997 297	Screw
45	2 610 996 875	Torsion Spring	107	2 610 910 013	Washer
46	2 610 996 874	Locking Lever	108	2 610 950 069	Screw
47	2 610 996 876	Shoulder Screw	109	2 610 950 070	Bushing
48	2 610 950 045	Washer	110	2 610 950 071	Screw
49	2 610 950 046	Washer	111	2 610 998 587	Screw
50	2 610 950 047	Arbor	112	2 610 996 921	Holding Bracket
51	2 610 996 879	Wing Screw	113	2 610 996 913	Pin
52	2 610 950 048	Cover Plate	114	2 610 996 917	Plate
53	2 610 950 049	Screw	116	2 610 997 275	Pin
54	2 610 950 050	Cover Plate	117	2 610 997 274	Pin
55	2 610 950 051	Holding Plate	118	2 610 996 918	Set screw
56	2 610 950 052	Guiding bolt	119	2 610 996 920	Connecting Nut
57	2 610 997 276	Spring retaining ring	120	2 610 996 919	Rod
58	2 610 950 053	Threaded Rod	121	2 610 994 262	Clamp
59	2 610 998 573	Spring retaining ring	122	2 610 996 915	Clamping Piece
60	2 610 997 221	Bushing	124	2 610 950 073	Handle
61	2 610 996 896	Toothed Gear	125	2 610 997 217	End stop
62	2 610 912 587	Plain Washer	126	2 610 950 074	Table
63	2 610 998 588	Screw	127	2 610 950 075	Mounting Rail
64	2 610 358 149	Nut	128	2 610 996 912	Fixing Plate



Pos.	Part Number	Description	Pos.	Part Number	Description
129	1 600 A00 724	Mounting Rail	204	2 610 950 109	Washer
131	2 610 951 945	Screw	205	2 610 950 110	Screw
132	2 610 950 077	Screw	206	2 610 950 111	Screw
133	2 610 950 078	Pointer	207	2 610 911 933	Connector
134	2 610 950 079	Profile Rail	208	2 610 998 593	Spring
135	2 610 018 277	Stamped Part	209	2 610 912 588	Plain Washer
138	2 610 950 080	Washer	210	2 610 950 112	Pusher
139	2 610 950 082	Cap	211	2 610 950 113	Knob
140	2 610 950 083	Plate	212	2 610 950 114	Washer
141	2 610 997 218	Cover	213	2 610 950 115	Spring
142	2 610 950 084	Profile Rail	214	2 610 950 116	Linkage
143	2 610 997 216	Cover	215	2 610 937 291	Mounting Bracket
144	1 619 PA5 719	Table top	216	2 610 937 292	Guide Pin
145	2 610 950 086	fixing plate	217	2 610 937 293	Retaining ring
146	2 610 950 087	Screw	218	2 610 950 117	Screw
147	2 610 304 772	Nut	219	2 610 950 389	Washer
149	2 610 950 088	Label	220	2 610 950 118	Profile Rail
150	2 610 950 089	Screw	221	2 610 950 119	Screw
151	2 610 950 090	Insert	222	2 610 950 120	Set screw
152	2 610 950 091	Set screw	223	2 610 950 121	End stop
153	2 610 011 716	Holding Spring	224	2 610 950 122	Screw
154	2 610 950 092	Protective Cover	225	2 610 950 123	Screw
157	2 610 950 093	Safety Device	226	2 610 950 124	Screw
169	2 610 950 094	Handle Cover	227	2 610 950 125	Screw
170	2 610 950 095	Housing	228	2 610 950 126	Mounting Bracket
171	2 610 950 096	Bolt	229	2 610 950 127	Mounting Bracket
172	2 610 950 097	Bolt	230	2 610 950 128	Plate
173	2 610 996 890	Lever	231	2 610 945 488	Screw
174	2 610 996 889	Cam	232	2 610 950 129	Plain Washer
175	2 610 997 289	Pin	233	2 610 950 130	Housing
176	2 610 950 098	Clamping Plate	234	2 610 950 131	Screw
177	2 610 997 291	Pin	236	2 610 950 132	Screw
178	2 610 950 099	Housing	237	2 610 950 133	Screw
179	2 610 997 249	Shoulder Screw	238	2 610 950 134	Bolt
180	2 610 950 100	Clamping Plate	239	2 610 950 135	Washer
181	2 610 997 810	Warning Label	240	2 610 950 136	Mounting Bracket
182	2 610 950 101	Pad	241	2 610 950 137	Rubber Bushing
183	2 610 950 102	Bracket	242	2 610 950 138	Rubber Bushing
184	2 610 950 103	Screw	243	2 610 950 139	Screw
185	2 610 950 104	Rod	244	2 610 950 140	Cam
186	2 610 950 105	Pin	245	2 610 950 068	Clamp
187	2 610 996 888	Spring	246	2 610 950 142	Riving Knife
188	2 610 950 106	Mitre Fence	247	2 610 950 143	Lens
189	2 610 358 802	Washer	248	2 610 950 144	Plate
190	2 610 950 107	Edge Guide	249	2 610 950 145	Plate
191	2 610 996 886	Roller	250	2 610 950 146	Washer
192	2 610 997 292	Pin	251	2 610 950 147	Screw
193	2 610 996 885	Clamping Plate	257	2 610 911 896	Nut
194	2 610 997 240	Clamping Piece	258	2 610 950 148	Mitre Fence
195	2 610 997 293	Screw	259	2 610 950 149	Miter Square
196	2 610 997 245	Adjusting Screw	260	2 610 958 586	Screw
197	2 610 911 920	Rubber Bushing	880	1 619 PB2 533	Handwheel
198	2 610 998 551	Hexagon Socket Screw Key			
199	2 610 998 580	Screw			
200	2 610 950 108	Screw			
201	2 610 992 380	Spring retaining ring			
202	2 610 997 817	Adhesive Label			
203	2 610 358 932	Connector			