



Operating Instructions and Parts Manual

Horizontal-Vertical Variable Speed Band Saw

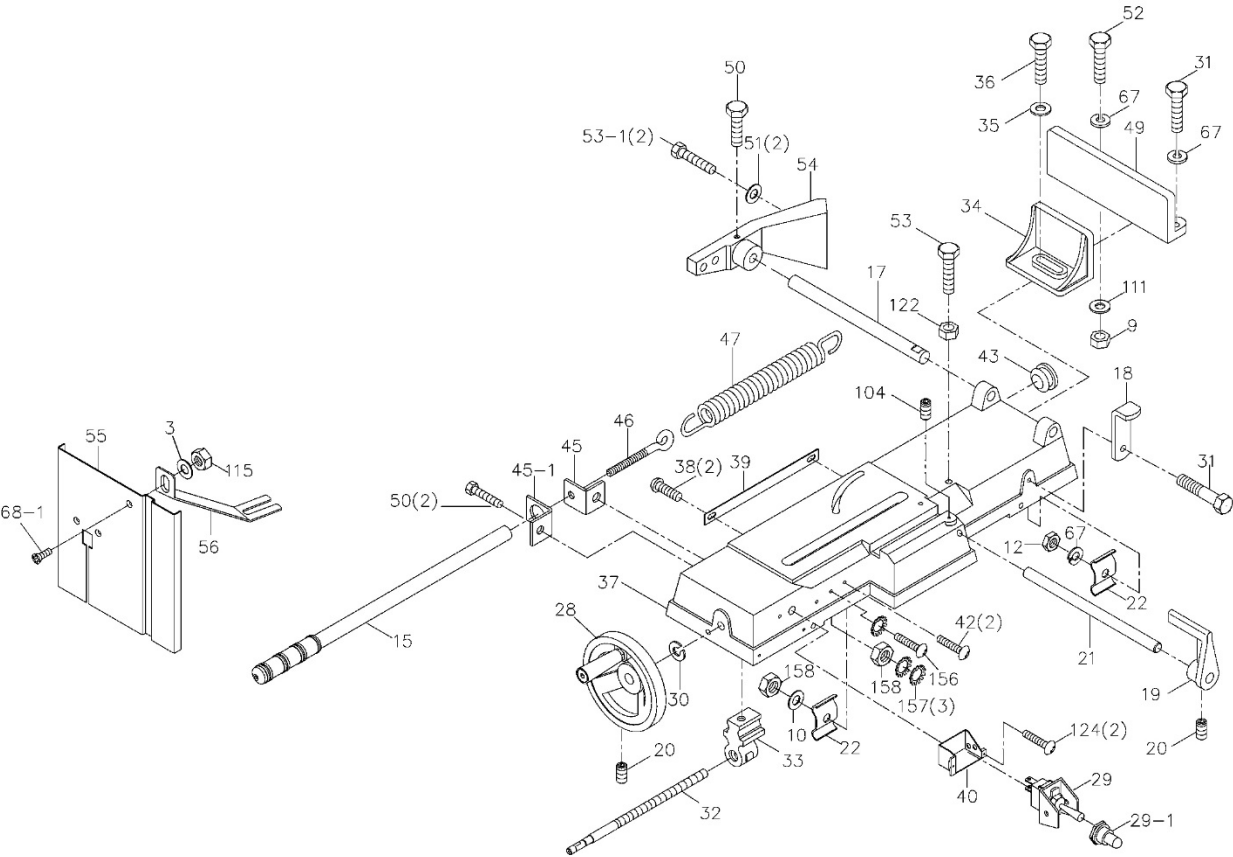
Model HVBS-56V



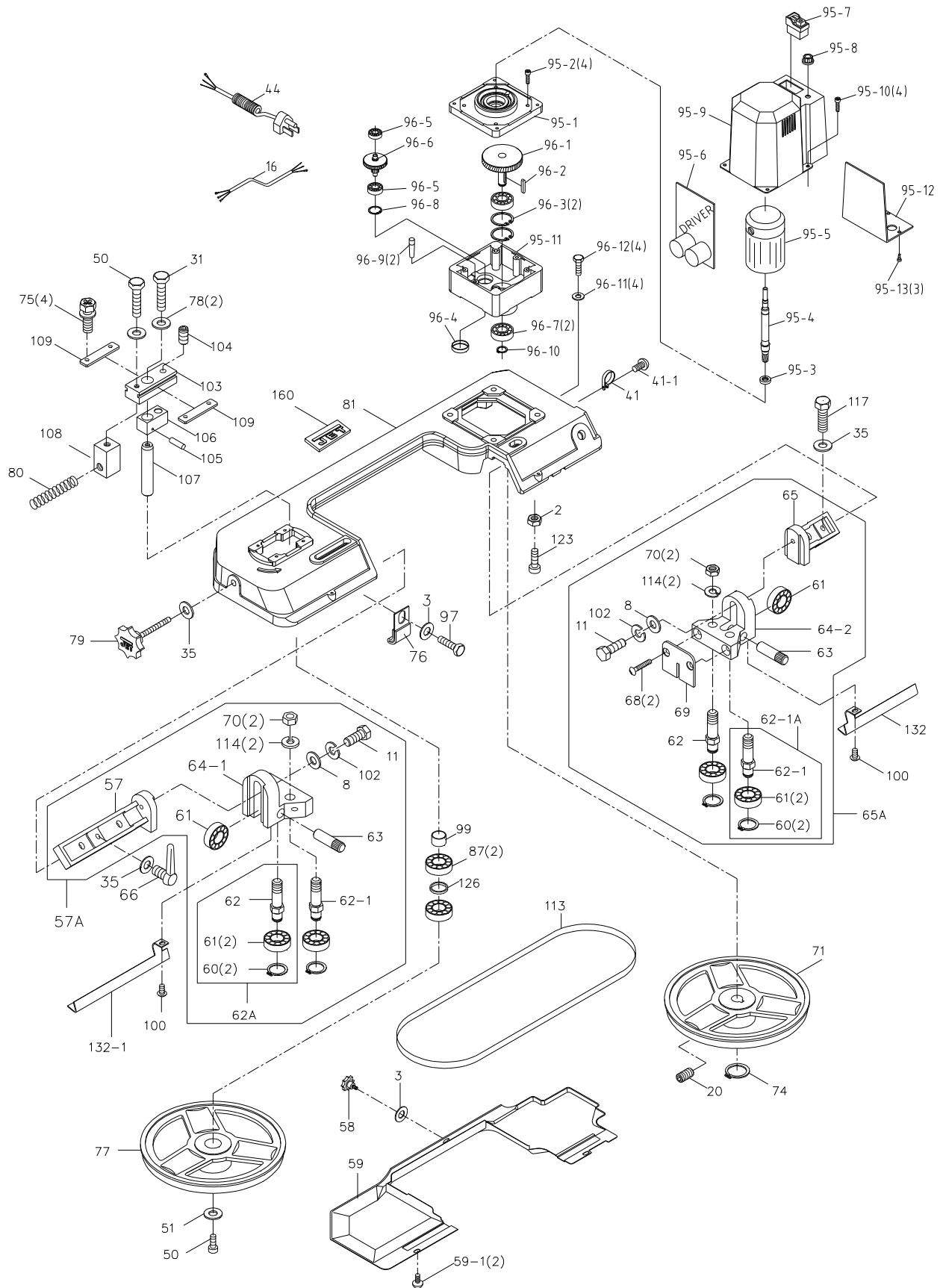
JET
427 New Sanford Road
LaVergne, Tennessee 37086
Ph.: 800-274-6848
www.jettools.com

Part No. M-414548
Edition 5 09/2018
Copyright © 2017 JET

11.1.1 HVBS-56V Bed Assembly – Exploded View



11.1.2 HVBS-56V Bow Assembly – Exploded View



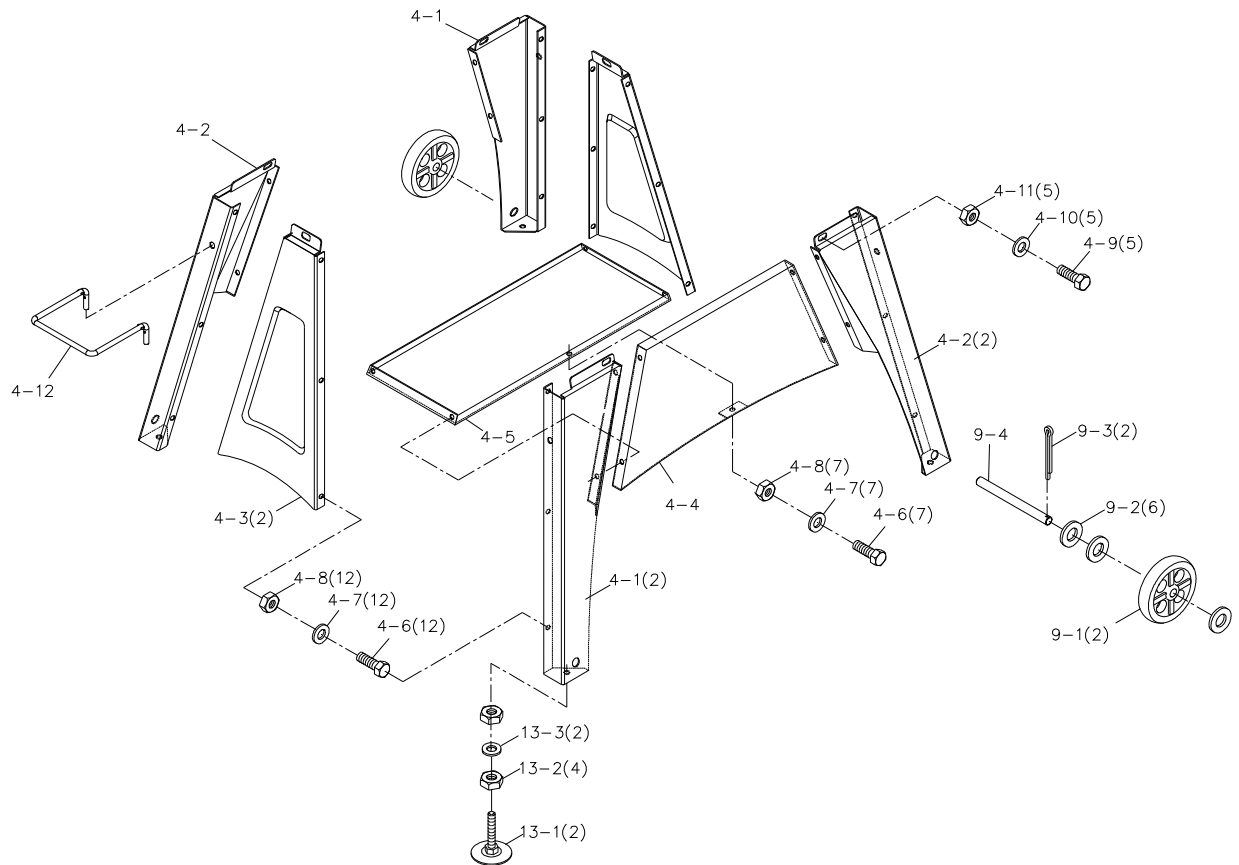
11.1.3 HVBS-56V – Bow and Bed Assemblies Parts List

Index No	Part No	Description	Size	Qty
2	TS-0561011	Hex Nut	1/4"-20	1
3	TS-0680021	Flat Washer	1/4"	3
8	TS-0680031	Flat Washer	5/16"x23x2	2
10	TS-0680021	Flat Washer	1/4"	1
11	TS-0051051	Hex Cap Screw	5/16"-18x1"	2
12	TS-0460081	Hex Nut	5/16"-18	2
15	HVBS462-015	Adjusting Rod		1
16	HVBS462-016	Electric Cord	125mm ² x2C, 600V	1
17	HVBS462-017	Pivoting Rod		1
18	HVBS462-018	Support Plate		1
19	HVBS462-019	Stock Stop		1
20	TS-0270021	Set Screw	5/16"-18x5/16"	4
21	HVBS462-021	Stock Stop Rod		1
22	HVBS462-022	Wire Relief Retainer		2
28	HVBS462-028	Handwheel		1
29	HVBS56M-029	Toggle Switch Assembly		1
29-1	HVBS56M-029-1	Plastic Cover		1
30	F006078	E-Retaining Ring, Ext	E10	1
31	TS-0051051	Hex Cap Screw	5/16"-18x1"	3
32	HVBS462-032	Lead Screw		1
33	HVBS462-033	Vise Nut		1
34	HVBS462-034	Moveable Vise Plate		1
35	TS-0680041	Flat Washer	3/8"	3
36	TS-0090061	Hex Cap Screw	3/8"-16x1-1/4"	1
37	HVBS462-037G	Bed		1
38	TS-081C022	Phillips Pan Hd Machine Screw	#10-24x3/8"	2
39	HVBS462-039	Scale		1
40	HVBS462-040	Electric Cord Clip		1
41	HVBS56V-041	Cable Clamp	5/16"	1
41-1	TS-081C022	Phillips Pan Hd Machine Screw	#10-24x3/8"	1
42	TS-081C022	Phillips Pan Hd Machine Screw	#10-24x3/8"	2
43	HVBS462-043	Rubber Ring		1
44	HVBS462-044	Power Cable with Plug	SJT 3x18AWG	1
45	HVBS462-045	Nut Plate		1
45-1	HVBS56M-045-1	Spring Handle Bracket		1
46	HVBS462-046	Spring Adjusting Screw		1
47	HVBS462-047	Spring		1
49	HVBS462-049	Mitering Vise Plate		1
50	TS-0081031	Hex Cap Screw	5/16"-18x3/4"	5
51	TS-0680031	Flat Washer	5/16"	3
52	TS-0081071	Hex Cap Screw	5/16"-18x1-1/2"	1
53	TS-0091071	Hex Cap Screw	7/16"-14x2"	1
53-1	TS-0051051	Hex Cap Screw	5/16"-18x1"	2
54	HVBS56M-054G	Pivot Bracket		1
55	HVBS462-055	Vertical Cutting Plate		1
56	HVBS462-056	Stand for Vertical Cutting Plate		1
57	HVBS56M-057	Adjustable Bracket LH		1
57A	HVBS56M-057A	Adjustable Bracket Assembly LH		1
58	HVBS462-058	Knob	1/4"	1
59	HVBS56M-059	Blade Back Safety Cover		1
59-1	F000738	Truss Head Phillips Machine Screw	1/4"-20x3/8"	2
60	F006040	C-Retaining Ring, Ext	S10	4
61	BB-6000ZZ	Ball Bearing	6000ZZ	6
62	HVBS462-062	Guide Pivot		2
62A	HVBS462-062A	Center Shaft Assembly (Includes #60-62)		1
62-1	HVBS462-062-1	Centrifugal Guide Pivot		2
62-1A	HVBS462-062-1A	Eccentric Shaft Assembly (Includes #60,61,62-1)		1
63	HVBS462-063	Bearing Shaft Pin		2
64-1	HVBS462-064-1	Blade Seat Left		1
64-2	HVBS462-064-2	Blade Seat Right		1
65	HVBS56M-065	Adjustable Bracket-RH		1
	HVBS56M-065A	Adjustable Bracket-Assembly RH		1
66	HVBS56M-066	Lock Knob	3/8"-16UNCx30L	1

Index No.	Part No.	Description	Size	Qty
67	TS-0720081	Lock Washer	5/16"	3
68	TS-081F021	Phillips Flat Head Machine Screw	1/4"-20x3/8"	2
68-1	TS-081F051	Phillips Flat Head Machine Screw *	1/4"-20X3/4"	1
69	HVBS462-069	Bearing Guard		1
70	TS-0561032	Hex Nut	3/8-24 UNF	4
71	HVBS462-071	Drive Blade Wheel		1
74	HVBS56M-060	C-Retaining Ring	S15	1
75	HVBS462-075	Hex Cap Bolt (w/Washer)	1/4"-20x5/8"	8
76	HVBS462-076	Switch Cut Off Trip		1
77	HVBS462-077	Idle Blade Wheel		1
78	TS-0680031	Flat Washer	5/16"	2
79	HVBS462-079	Blade Tension Knob	3/8"-16UNCx105L	1
80	HVBS462-080	Spring		1
81	HVBS56V-081	Saw Bow	128DC	1
87	BB-6202ZZ	Ball Bearing	6202ZZ	6
95-1	HVBS56V-95-1	Gear Box Cover		1
95-2	TS-1503051	Socket Head Cap Screw	M6x20L	4
95-3	HVBS56V-95-3	Oil seal	TC-12x20x5B	1
95-4	HVBS56V-95-4	Motor Shaft		1
95-5	HVBS56V-95-5	Motor	1/2HP 1PH	1
	HBS56MVS-095-MCB	Carbon Brush (not shown)		2
95-6	HVBS56V-95-6	Driver		1
95-7	HVBS56V-95-7	Magnetic Switch	110V	1
95-8	HVBS56V-95-8	Variable Resistor		1
95-9	HVBS56V-95-9	Motor Sleeve		1
95-10	TS-1502041	Socket Head Cap Screw	M5x16L	4
95-11	HVBS56V-95-11	Gear Box		1
95-12	HVBS56V-95-12	Electric Plate		1
95-13	HVBS56V-95-13	Phillips Pan Hd Machine Screw	M3.5x16L	3
96-1	HVBS56V-96-1	Active Shaft		1
96-2	KF2R5525	Double Round Hd Key	5x5x25L mm	1
96-3	HVBS56V-96-3	C-Retainer Ring, Internal	R42	2
96-4	HVBS56V-96-4	Band	35x8t mm	1
96-5	BB-6200ZZ	Ball Bearing	6200-ZZ	2
96-6	HVBS56V-96-6	Gear		1
96-7	BB-6004-2RS	Ball Bearing	6004-2RS	2
96-8	HVBS56V-96-8	C-Retainer Ring, Internal	R30	1
96-9	HVBS56V-96-9	Pivot Pin	Ø6x20 mm	2
96-10	HVBS56V-96-10	C-Retainer Ring, External	S20	1
96-11	TS-2361081	Lock Washer	M8	4
96-12	TS-1490041	Hex Cap Screw	M8x25L	4
97	TS-0050021	Hex Cap Screw	1/4"-20x3/8"	2
99	HVBS462-099	Spacer		1
100	F000614	Truss Hd Phillips Machine Screw	#8-32x3/8"	3
102	TS-0720081	Lock Washer	5/16"	2
103	HVBS462-103	Blade Tension Sliding Plate		1
104	TS-0270071	Socket Set Screw	5/16"-18x3/4"	2
105	F12072	Roll Pin	Ø4x20L	1
106	HVBS462-106	Sliding Plate Draw Block		1
107	HVBS462-107	Blade Wheel Shaft		1
108	HVBS462-108	Shaft Block		1
109	HVBS462-109	Blade Tension Sliding Guide		2
111	TS-0680031	Flat Washer	5/16"	1
113	414301	Blade	1/2 x 0.025 x 64-1/2 x 14T	1
114	TS-0680041	Flat Washer	3/8"	4
115	TS-0570011	Hex Nut *	1/4"-20	1
117	TS-0090061	Hex Cap Screw	3/8"-16x1-1/4"	1
122	TS-0561041	Hex Nut	7/16"-14	1
123	TS-0050051	Hex Cap Screw	1/4"-20x1"	1
124	TS-081C052	Phillips Pan Hd Machine Screw	#10-24x3/4"	2
126	HVBS462-126	Bushing		1
132	HVBS462-132	Blade Guard-Right		1
132-1	HVBS462-132A	Blade Guard-Left		1
156	HVBS462-156	Round Head Screw	3/16"x3/4"	1
157	HVBS462-157	Ext Tooth Lock Washer	3/16"	3

Index No.	Part No.	Description	Size	Qty
158	TS-0680021	Hex Nut	3/16"-18	2
160	JET-92	JET Logo with 3M adhesive	92x38 mm	1
	JJ6CS-OEW2	Open End Wrench (not shown)	12/14 mm	1
	LM000282	ID Label, HVBS-56V (not shown)		1
	HVBS56M-WL	Warning Label (not shown)		1
	LM000283	Speed Chart, HVBS-56V (not shown)		1
	LM000284	VR Speed Label, HVBS-56V (not shown)		1
	HVBS56V-HP	Hardware Package (contains items with *)		1

11.2.1 HVBS-56V Stand – Exploded View



11.2.2 HVBS-56V Stand – Parts List

Index No	Part No	Description	Size	Qty
.....	HVBS56M-CSA	Complete Stand Assembly	1
4-1	HVBS56M-S1	Left Stand Leg	1
4-2	HVBS56M-S2	Right Stand Leg	1
4-3	HVBS56M-S3	Cross Brace	1
4-4	HVBS56M-S4	Front Panel	1
4-5	HVBS56M-S5	Shelf	1
4-6	HVBS56M-2	Hex Head Screw w/lock washer *	1/4"-20 x 5/8"	19
4-7	TS-0680021	Flat Washer *	1/4"	19
4-8	TS-0570011	Hex Nut *	1/4"	19
4-9	TS-0208071	Socket Head Cap Screw *	5/16"-18 x 1-1/4"	6
4-10	TS-0680031	Flat Washer*	5/16"x23xt2	6
4-11	TS-0570022	Hex Nut*	5/16"	6
4-12	HVBS462-014	Floor Stand Handle	1
9-1	HVBS56M-09	Wheel	2
9-2	TS-0680081	Flat Washer *	5/8"	6
9-3	HVBS462-006	Cotter Pin *	1/8" x 1"	2
9-4	HVBS56M-07	Axle	1
13-1	HVBS56M-013	Adjustable Foot	3/8"	2
13-2	TS-0561032	Hex Nut	3/8"-24 UNF	4
13-3	TS-0680041	Flat Washer	3/8"	2
.....	HVBS56V-HP	Hardware Package (contains items with *)