



Operating Instructions and Parts Manual

5x6-inch Mitering Variable-Speed Band Saw

Model HBS-56MVS



JET
427 New Sanford Road
LaVergne, Tennessee 37086
Ph.: 800-274-6848
www.jettools.com

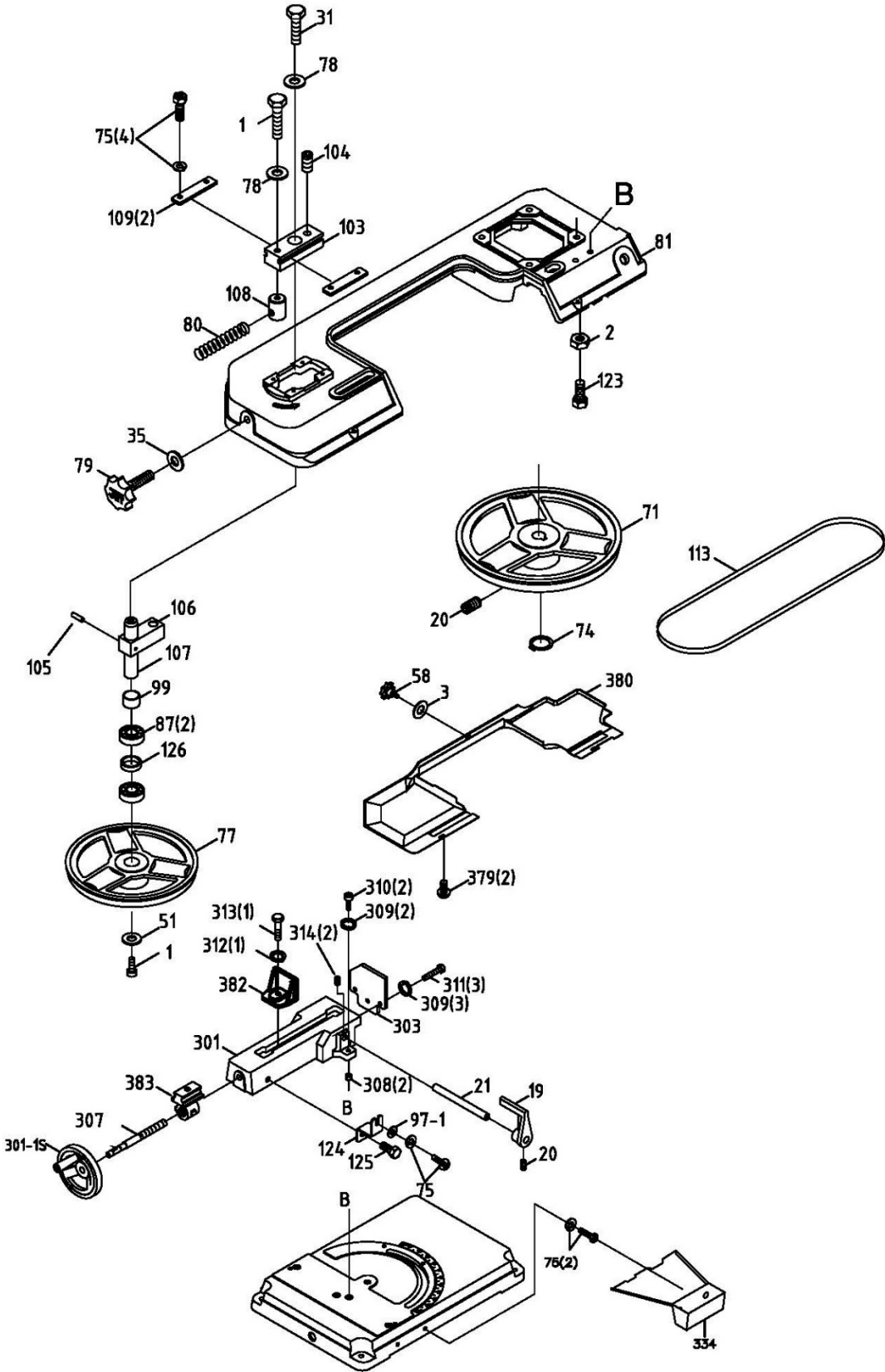
Part No. M-414558
Edition 2 05/2018
Copyright © 2018 JET

11.1.2 HBS-56MVS Base and Stand Assembly – Parts List

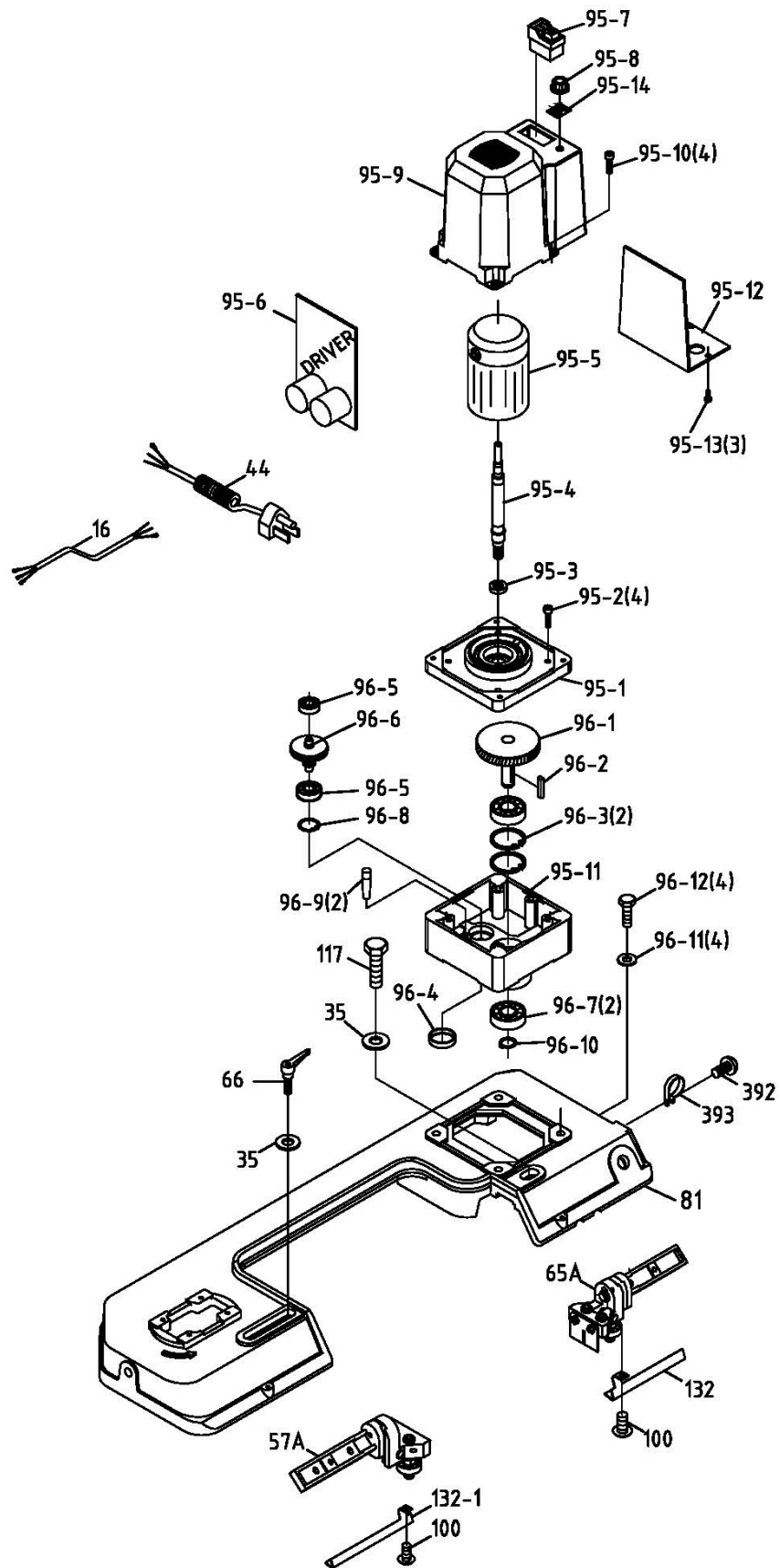
Index No	Part No	Description	Size	Qty
1	TS-0081031	Hex Cap Screw	5/16"-18x3/4"	1
11	TS-0051051	Hex Cap Screw	5/16"-18x1"	2
17	HVBS462-017	Pivoting Rod		1
51	TS-0680031	Flat Washer	5/16"	2
54	HVBS56M-054G	Pivot Bracket		1
76-1	HBS56MVS-076-1	Switch Cut Off Base		1
76-2	TS-0570022	Hex Nut	5/16"-18 "	1
76-3	TS-0051051	Hex Cap Screw	5/16"-18x1"L	1
76-4	TS-0050021	Hex Cap Screw	1/4"-20x5/8"L	2
76-5	TS-0720071	Lock Washer	1/4"	2
120	HVBS462-120	Bushing		2
224-1	TS-081C032	Phillips Pan Hd Machine Screw	#10-24x1/2"L	2
224-2	TS-0720051	Lock Washer	#10	2
224-3	HBS56MVS-224-3	Stop Bolt Holder		1
255	TS-0267032	Socket Set Screw	1/4"-28x5/16"	1
300	HBS56S-300G	Stand Top		1
304	HBS56S-304G	Swivel Base (Upper)		1
315	HBS56S-315	Positioning Ring		1
318	TS-0211112	Socket Hd Cap Screw	1/2"-20x2-1/2"L	1
319	TS-0561031	Hex Nut	3/8"-16	1
320	TS-0070071	Hex Cap Screw	1/2"-13x2-1/2"	1
324	HBS56S-324	Handle		1
325	HBS56S-325	Carriage Screw	3/8"	1
338	HBS56MVS-338	Angle Scale		1
352	HBS56S-352	Pointer		1
353	HBS56S-353	Cross Round Head Screw	3/16"-18x1/2"	1
354	TS-0050031	Hex Cap Screw	1/4"-20x1"	2
355	TS-0570011	Hex Nut	1/4"-20	2
356	TS-0051051	Hex Cap Screw	5/16"-18x1"	1
384-1	HBS56S-384-1G	Side Plate (Left)		1
384-2	HBS56S-384-2G	Side Plate (Right)		1
384-3	HBS56S-384-3G	Chip Pan		1
384-4	HBS56S-384-4G	Front Door		1
384-5	HBS56S-384-5	Knob		1
384-6	HBS56S-384-6G	Wheel Base		1
384-7	HBS56S-384-7	Hand Rod		1
384-8	HBS56S-384-8	Rubber Head Screw		2
384-9	TS-0051031	Hex Cap Screw	5/16"-18x3/4"	12
384-10	TS-0680031	Flat Washer	5/16"x23xt2mm	25
384-11	TS-0561021	Hex Nut	5/16"-18	12
384-12	TS-0051071	Hex Cap Screw	5/16"-18x1-1/2"	4
384-14	TS-0561021	Hex Nut	5/16"-18	4
384-15	HBS56S-384-15G	Plate		1
384-17	TS-0640081	Hex Nylon Lock Nut	5/16"-18	1
385	HBS56S-385	Wheel Complete Assembly (includes #385-1 thru 385-4)		1
385-1	HBS56S-385-1	Wheel		1
385-2	7015-308	Flat Washer	5/8"x30xt3	4
385-3	5519932	Cotter Pin	3x25mm	2
385-4	HBS56S-385-4	Wheel Rod		1
386	TS-0060061	Hex Cap Screw	3/8"-16x1-1/4"	4
387	HBS814GH-092	Flat Washer	3/8"x20xt2	4
390	HBS56S-390	Rivet	Ø2x5mm	3
396	TS-0680041	Flat Washer	3/8"	1
401	TS-1492051	Hex Cap Screw	M12x50L	1
402	TS-2360121	Flat Washer	M12	1
403	HBS56MVS-403	Stopper		1
420	HBS56MVS-420	Spring Bracket		1
421	TS-2246122	Socket Head Button Screw	M6-1.0Px12L	3
422	TS-1490071	Hex Cap Screw	M8x40L	1
423	HBS56MVS-423	Tension Spring		1

Index No	Part No	Description	Size	Qty
423A.....	HBS56MVS-423A	Tension Spring Assembly (#423, 423-1)		1
423-1	HBS56MVS-423-1.....	Brace		1
425	TS-1540061	Hex Nut.....	M8	1
426	TS-1550061	Flat Washer	M8	1

11.2.1 HBS-56MVS Bow Assembly I – Exploded View



11.2.2 HBS-56MVS Bow Assembly II – Exploded View

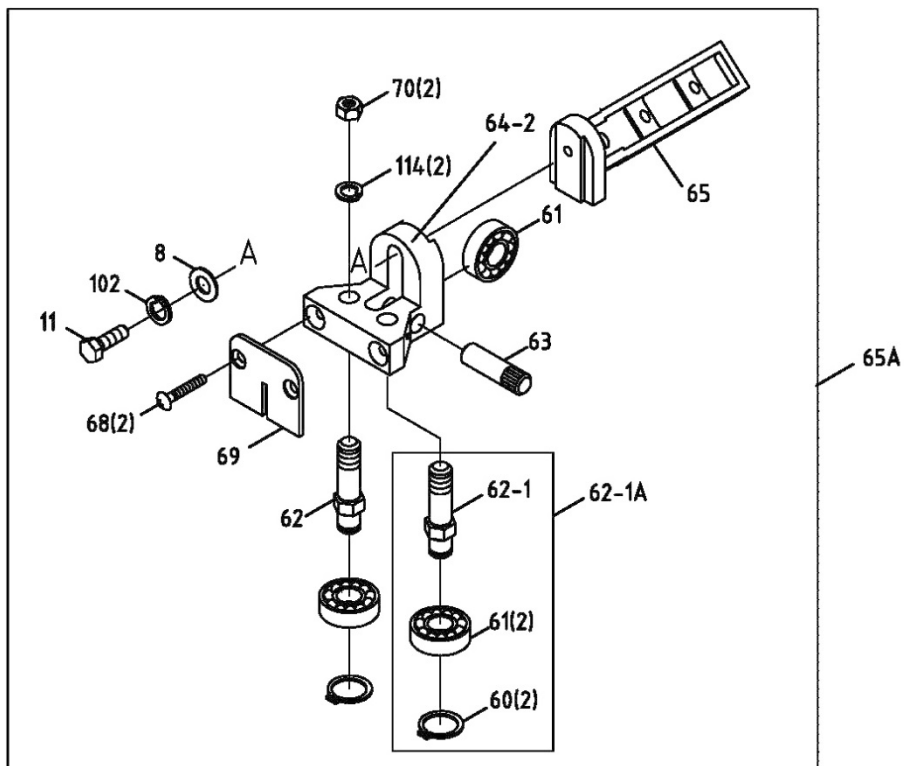
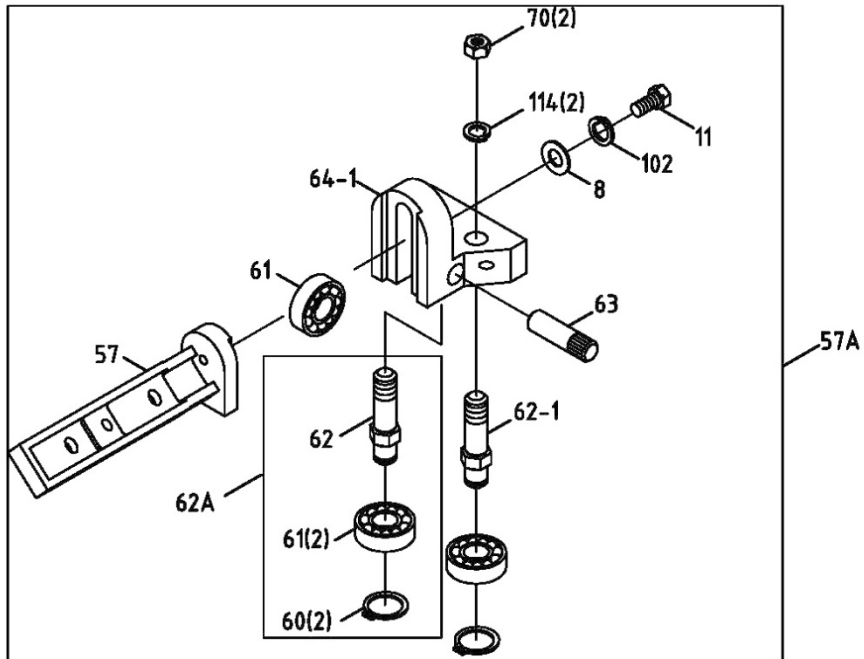


11.2.3 HBS-56MVS Bow Assembly – Parts List

Index No	Part No	Description	Size	Qty
1	TS-0081031	Hex Cap Bolt	5/16"-18x3/4"	3
2	TS-0561011	Hex Nut	1/4"-20	1
3	TS-0680021	Flat Washer	1/4"	1
16	HVBS462-016	Electric Cord		1
19	HVBS462-019	Stock Stop		1
20	TS-0270021	Socket Set Screw	5/16"-18x5/16"	2
21	HVBS462-021	Stock Stop Rod		1
31	TS-0051051	Hex Cap Screw	5/16"-18x1"	1
35	TS-0680041	Flat Washer	3/8"x1"	3
44	HB56M-044	Electric Cable		1
51	TS-0680031	Flat Washer	5/16"	1
57A	HVBS56M-057A	Adjustable Bracket Assembly LH		1
58	HVBS462-058	Knob	1/4"	1
65A	HVBS56M-065A	Adjustable Bracket Assembly RH		1
66	HVBS56M-066	Lock Knob		1
71	HVBS462-071	Blade Wheel – Drive		1
74	HVBS56M-060	C-Retainer Ring	S15	1
75	HVBS462-075	Hex Cap Bolt with Lock Washer	1/4"-20x1/2"	7
77	HVBS462-077	Blade Wheel – Idler		1
78	TS-0680031	Flat Washer	5/16"	2
79	HVBS462-079	Blade Tension Knob	3/8"	1
80	HVBS462-080	Spring		1
81	HBS56MVS-081	Saw Bow Casting		1
87	BB-6202ZZ	Ball Bearing	6202ZZ	2
95-1	HVBS56MVS-095-1	Gear Box Cover DC		1
95-2	TS-1503051	Hex Socket Head Cap Screw	M6-1.0x20L	4
95-3	HBS56MVS-095-3	Oil Seal	TC-12x20x5B	1
95-4	HBS56MVS-095-4	Motor Shaft		1
95-5	HBS56MVS-095-5	Motor		1
95-5A	HBS56MVS-095-5A	Motor Assembly (#95-1, 95-3, 95-4, 95-5)		1
	HBS56MVS-095-MCB	Motor Carbon Brush		2
95-6	HBS56MVS-095-6	Driver		1
95-7	HBS56MVS-095-7	Magnetic Switch	110V	1
95-8	HBS56MVS-095-8	Variable Resistor		1
95-9	HBS56MVS-095-9	Motor Sleeve		1
95-10	TS-1481041	Hex Socket Hd Cap Screw	M5x16L	4
95-11	HBS56MVS-095-11	Gear Box		1
95-12	HBS56MVS-095-12	Electricals Plate		1
95-13	HBS56MVS-095-13	Cross Round Head Screw	M3.5x16L	3
95-14	HBS56MVS-095-14	VR Speed Label		1
96-1	HBS56MVS-096-1	Drive Gear		1
96-2	LF20-304	Flat Key, Double Rd Hd	5x5x25L mm	1
96-3	HVBS56V-96-3	C-Retainer Ring	R42	2
96-4	HBS56MVS-096-4	Cap	35x8t mm	1
96-5	BB-6200Z	Ball Bearing	6200-ZZ	2
96-6	HBS56MVS-096-6	Gear 326009-1+326009-2		1
96-7	BB-6004ZZ	Ball Bearing	6004-2RS	2
96-8	HBS56MVS-096-8	C-Retainer Ring	R30	1
96-9	HBS56MVS-096-9	Pivot Pin	Ø6x20L mm	2
96-10	HBS56MVS-096-10	C-Retainer Ring	S20	1
96-11	TS-2361081	Lock Washer	M8	4
96-12	TS-1490041	Hex Cap Screw	M8-1.25x25L	4
97-1	TS-0680021	Washer	1/4"	1
99	HVBS462-099	Spacer		1
100	F000199	Phillips Pan Hd Machine Screw	#8-32x3/8"	2
103	HVBS462-103	Blade Tension Sliding Plate		1
104	TS-0270071	Socket Set Screw	5/16"-18x3/4L"	1
105	HVBS462-105	Spring Pin		1
106	HVBS462-106	Sliding Plate Draw Block (includes #107)		1
107	HVBS462-107	Blade Wheel Shaft (RE:HVBS462-106)		1

Index No	Part No	Description	Size	Qty
108	HVBS462-108	Shaft Block		1
109	HVBS462-109	Blade Tension Sliding Guide		2
113	414301	Blade	1/2"x0.025"x64-1/2", 14R	1
117	TS-0090061	Hex Cap Screw	3/8"-16x1-1/4"	1
123	TS-0050031	Hex Cap Screw	1/4"-20x3/4"	1
124	HBS56MVS-124	Shipping Bracket		1
125	TS-0051031	Hex Cap Screw	5/16"-18x3/4"	1
126	HVBS462-126	Bushing		1
132	HVBS462-132	Blade Guard-Right		1
132-1	HVBS462-132A	Blade Guard-Left		1
301	HBS56S-301G	Work Table		1
301-1S	HVBS462-027	Handwheel Assembly		1
303	HBS56S-303	Wall Plate		1
307	HBS56S-307	Acme Screw		1
308	HBS56S-308	Bushing		2
309	TS-0680011	Flat Washer	3/16"	5
310	TS-0208081	Hex Socket Hd Cap Screw	5/16"-18x1-1/2"	2
311	TS-0081031	Hex Cap Screw	5/16"-18x3/4"	3
312	TS-0680031	Flat Washer	5/16"	1
313	TS-0208061	Hex Socket Hd Cap Screw	5/16"x1-1/4"	1
314	TS-0267041	Socket Set Screw	1/4"-20x3/8"	2
334	HBS56S-389	Drip Tray		1
379	HBS814GH-200	Cross Round Head Screw	1/4"-20x3/8"	2
380	HVBS56M-380	Back Blade Cover		1
382	HBS56S-382	Movable Vise Plate		1
383	HBS56S-383	Bracket		1
392	TS-081C022	Phillips Pan Hd Machine Screw	#10-24x3/8"	1
393	HBS56S-393	Cable Clamp		1
	LM000339	Speed Chart, HBS-56MVS (not shown)		1
	LM000340	ID Label, HBS-56MVS (not shown)		1
	HVBS56M-WL	Warning Label (not shown)		1
	JET-92	JET Logo (not shown)	92x38mm	1
	JJ6CS-OEW2	Open End Wrench (not shown)	12/14 mm	1

11.3.1 HBS-56MVS Blade Guide Assembly – Exploded View



11.3.2 HBS-56MVS Blade Guide Assembly – Parts List

Index No	Part No	Description	Size	Qty
8	TS-0680031	Flat Washer	5/16"	2
11	TS-0051051	Hex Cap Screw	5/16"-18x1"	2
57	HVBS56M-057	Adjustable Bracket LH		1
57A	HVBS56M-057A	Adjustable Bracket Assembly LH		1
60	HVBS462-060	C-Retainer Ring	S10	4
61	BB-6000ZZ	Ball Bearing	6000ZZ	6
62	HVBS462-062	Guide Pivot		2
62-1	HVBS462-062-1	Centrifugal Guide Pivot		2
62-1A	HVBS462-062-1A	Eccentric Shaft Assembly (Includes #60,61,62-1)		2
62A	HVBS462-062A	Center Shaft Assembly (Includes #60-62)		2
63	HVBS462-063	Bearing Shaft Pin		2
64-1	HVBS462-064-1	Blade Seat Left		1
64-2	HVBS462-064-2	Blade Seat Right		1
65	HVBS56M-065	Adjustable Bracket RH		1
65A	HVBS56M-065A	Adjustable Bracket Assembly RH		1
68	TS-0813021	Flat Head Machine Screw	1/4"-20x3/8"	2
69	HVBS462-069	Deflector Plate		1
70	TS-0561031	Hex Nut	3/8"-16	4
102	TS-0720081	Lock Washer	5/16"	2
114	TS-0680041	Flat Washer	3/8"	4