



Operating Instructions and Parts Manual Metalworking Dust Collection Stand

Model JDCS-505



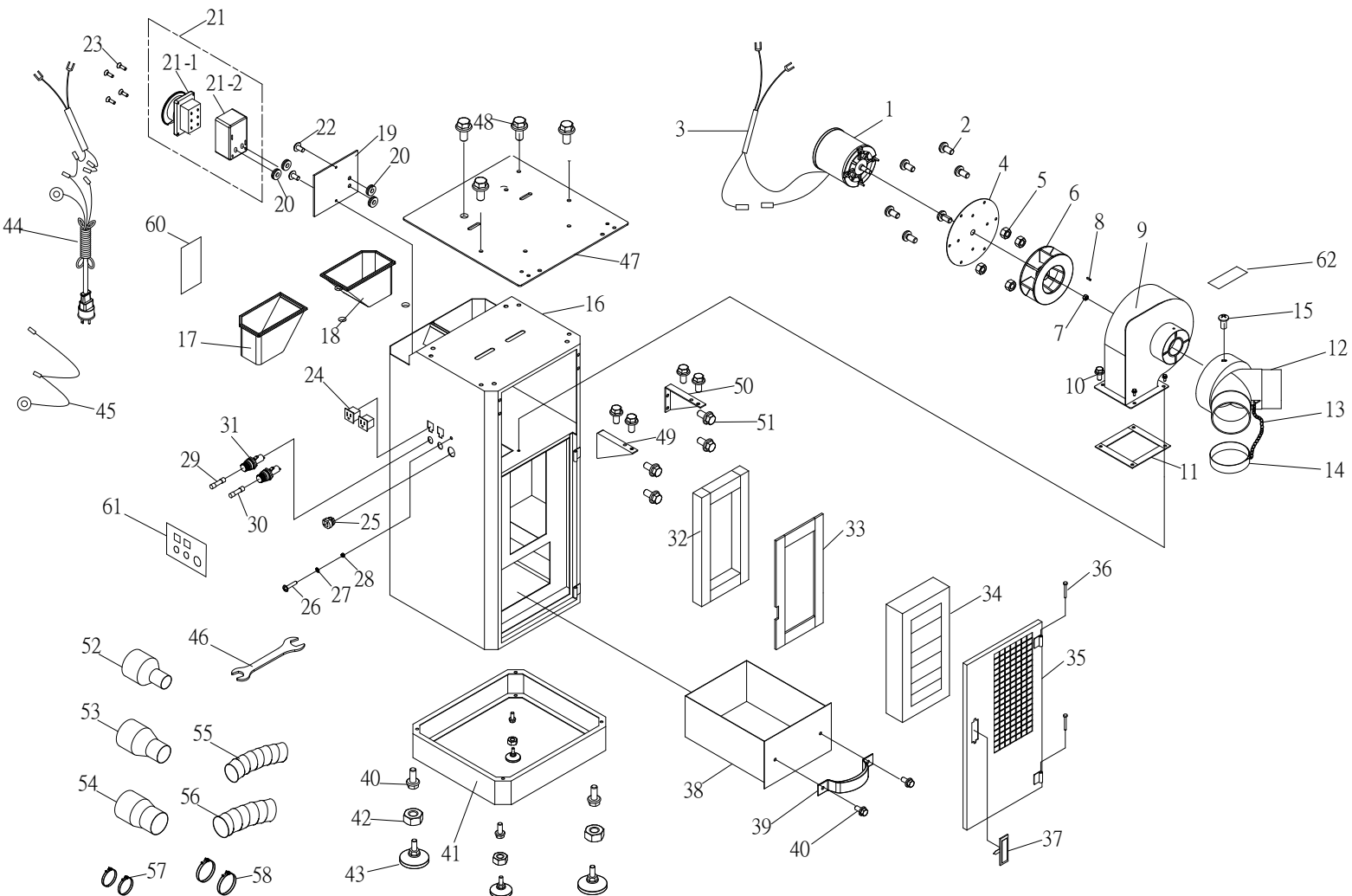
JET
427 New Sanford Road
LaVergne, Tennessee 37086
Ph.: 800-274-6848
www.jettools.com

Part No. M-414800
Edition 5 11/2018
Copyright © 2016 JET

10.0 Replacement Parts

To order parts or reach our service department, call 1-800-274-6848 Monday through Friday, 8:00 a.m. to 5:00 p.m. CST. Having the Model Number and Serial Number of your machine available when you call will allow us to serve you quickly and accurately.

10.1.1 JDCS-505 Grinder Stand – Exploded View



10.1.2 JDCS-505 Grinder Stand – Parts List

Index No	Part No	Description	Size	Qty
1	JDCS505-01	Motor	1/2 HP	1
	JDCS505-RC	Run Capacitor (not shown)	300VAC 15 μ F	1
2	F000299	Phillips Pan Head Screw	1/4 x 1/2 in.	6
3	JDCS505-03	Motor Cord		1
4	JDCS505-04	Motor Plate	Ø215 x 3t mm	1
5	F001692	Lock Nut	M4	4
6	JDCS505-06	Impeller		1
7	F001698	Lock Nut	M10-1.5	1
8	EGH1880-1-A07	Key	4x4x20 mm	1
9	JDCS505-09	Impeller Housing		1
10	F012430	Hex Flange Screw	1/4 x 1/2 in.	4
11	JDCS505-11	Gasket		1
	JDCS505-12A	Inlet Adaptor Assembly (includes #12,13,14)		1
12	JDCS505-12	Inlet Adaptor	Ø3 in.(x2)	1
13	JDCS505-13	Chain		1
14	414835	End Cap	Ø3 in	1
15	F008319	Hex Cap Bolt	#10-24 x 3/8 in.	1
16	JDCS505-16	Main Body		1
17	JDCS505-17	Right Tray		1
18	JDCS505-18	Left Tray		1
19	JDCS505-19	Plate		1
20	JDCS505-20	Bushing		4
21	JDCS505-21	Switch Assembly (includes # 21-1, 21-2, 21-3)		1
21-1	JDCS505-21-1	Switch Base		1
21-2	JDCS505-21-2	Switch Cover		1
21-3	JDC-500022-SC	Safety Key (not shown)		1
22	F000652	Phillips Flange Head Screw	3/16 x 3/8 in.	2
23	JDCS505-23	Phillips Head Sheet Metal Screw	M3x12	4
24	JDCS505-24	Receptacle	15A	2
25	JDCS505-25	Strain Relief	8R-1	1
26	F000233	Phillips Pan Head Screw	3/16 x 1/2 in.	1
27	F001977	Lock Washer External Tooth	#10-24 in.	1
28	F002973	Hex Nut	#10-24 in.	1
29	JDCS505-29	Fuse	10A 250VAC	1
30	JDCS505-30	Fuse	15A 250VAC Slow Blow	1
31	JDCS505-31	Fuse Seat		2
	JDCS505-31-1	Fuse Cap (not shown)		2
32	JDCS505-32	Foam Strip	1/2 in. W	1
33	JDCS505-33	Foam Strip	7/8 in. W	1
34	414840	Filter	340x172x60mm/50 μ	1
35	JDCS505-35	Door		1
36	JDCS505-36	Bolt		1
37	JDCS505-37	Door Latch		1
38	JDCS505-38	Drawer		1
39	JDCS505-39	Handle		1
40	F012439	Hex Flange Screw	5/16 x 1/2 in.	6
41	JDCS505-41	Base	450x450x1.6t	1
42	F002957	Hex Nut	3/8 in.	4
43	JDCS505-43	Foot Pad	3/8 x 2 in.	4
44	JDCS505-44	Power Cord	5-20P / 3.31mm ²	1
45	JDCS505-45	Ground Wire		1
46	GH1340A-TBCP-16-04	Open-end Wrench	10/12 mm	1
59	JET-165	JET Logo with Adhesive (not shown)	165x68mm	1
60	LM000083	ID/Warning Label, JDCS-505		1
61	LM000084	Caution Label – Receptacles		1
62	LM000085	Caution Label – Adaptor		1

Optional parts:

..... 414830	Adaptor Plate Kit * (incl. #47 thru 51)	1
47	Adaptor Plate *	1
48 F012439	Hex Flange Screw * 5/16 x 1/2 in.	4
49 JDCS505-49.....	Left Support *	1
50 JDCS505-50.....	Right Support *	1
51 F012430	Hex Flange Screw * 1/4 x 1/2 in.	8
52 414815	Reducer *	3 to 1.5 in. 1
53 414820	Reducer *	3 to 2 in. 1
54 414825	Reducer *	3 to 2.5 in. 1
55 414812	0.6M Hose, Heat Resistant *	Ø2 x 24.4 in. 1
56 414813	0.6M Hose, Heat Resistant *	Ø3 x 24.4 in. 1
57 605417	Wire Hose Clamp *	Ø2 in. 2
58 JDCS505-58.....	Wire Hose Clamp *	Ø3 in. 2
59 414811	0.6M Hose, Heat Resistant * (not shown)	Ø2.5 x 24.4 in. 1

Parts with asterisk (*) are optional and ordered separately.

Some parts may be shown for reference only, and not available individually.