



SERVICE PARTS LIST

BUL. 54-46-2102

ELECTROMAGNETIC DRILL STAND

REVISED BUL 6296-3 DATE July '68

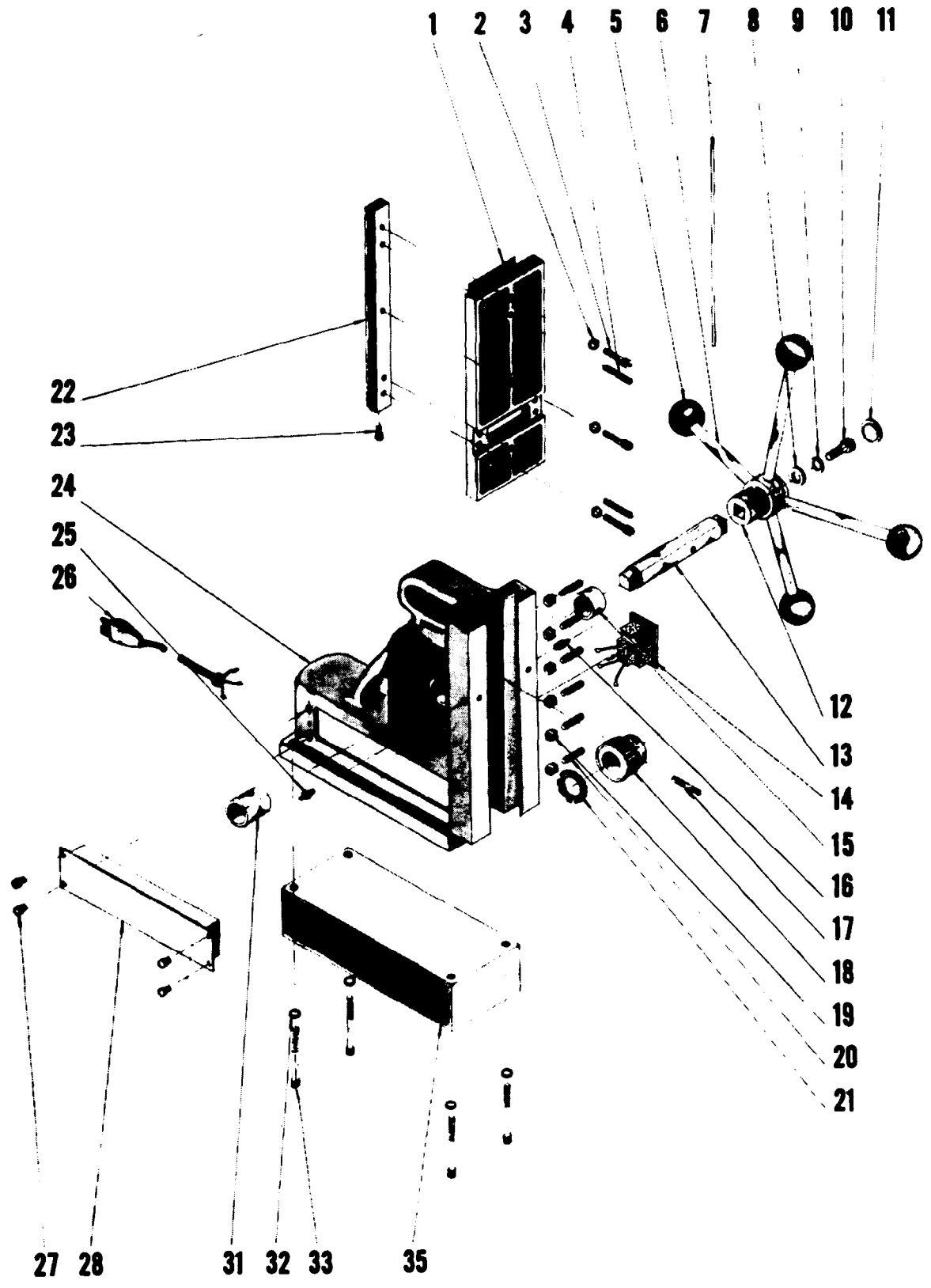
Catalog No. 4220

Starting Serial No. 296-1335

WIRING INSTR.

Both Model and Serial No. must be furnished to obtain correct parts.

230V MOTOR See Reverse Side For Information





SERVICE PARTS LIST

ELECTROMAGNETIC DRILL STAND

230V Mounting
 23-81-0100 Transformer
 42-28-0170 Transformer Mtg. Block w/thru Hole
 42-28-0172 Transformer Mtg. Block w/tapped Hole
 06-81-0200 6-32 x 1 Binder Hd. Transformer Mtg. Scr. (4)
 06-81-4555 6-32 x 2 1/2 Round Hd. Mtg. Block Scr. (2)

ILLUSTRATED PARTS

| FIG. | PART NO. | DESCRIPTION OF PART | NO.REQ. | FIG. | PART NO. | DESCRIPTION OF PART | NO.REQ. |
|------|------------|-----------------------------------|---------|------|------------|------------------------------------|---------|
| 1 | 30-84-0151 | Slide | | 18 | 32-60-1001 | Pinion Gear | |
| 2 | 06-97-4050 | 1/4 Lock Washer | (3) | 19 | 06-55-1100 | 10-32 Hex Nut | (6) |
| 3 | 06-75-3050 | 1/4-20 x 3/4 Socket Hd. Cap Screw | (3) | 20 | 06-83-2520 | 10-32 x 1 Set Screw | (6) |
| 4 | 06-65-1650 | 1/4 x 1 1/4 Roll Pin | (2) | 21 | 45-88-0410 | Spring Washer | |
| 5 | 43-98-0050 | Plastic Knob | (4) | 22 | 44-80-0150 | Rack | |
| 6 | 43-62-0050 | Feed Handle | (4) | 23 | 06-83-2440 | 10-32 x 5/16 Socket Head Set Screw | |
| 7 | 43-48-0070 | Gib | | 24 | 28-50-7921 | Support Housing | |
| 8 | 45-88-0420 | 3/4 O.D. x 9/32 I.D. x 1/8 Washer | | 25 | 43-33-0150 | Grease Fitting | |
| 9 | 06-97-4050 | 1/4 Lock Washer | | 26 | 22-64-0330 | Cord Set | |
| 10 | 06-75-3150 | 1/4-20 x 1 Socket Head Cap Screw | | 27 | 06-81-5790 | 6-32 x 1/4 Fil. Head Screw | (4) |
| 11 | 44-68-0110 | Plug | | 28 | 23-35-0090 | Power Panel Assembly | |
| ★12 | 43-78-0105 | Hub | | 31 | 42-40-0380 | Bushing | |
| ★13 | 45-08-0055 | Shaft | | 32 | 06-97-4050 | 1/4 Lock Washer | (4) |
| 14 | 23-33-0170 | Receptacle | | 33 | 06-75-4215 | 5/16-18 x 2 1/4 Socket Head Screw | (4) |
| 15 | 42-40-0340 | Bushing | | 35 | 42-20-0210 | Magnetic Base | |
| 16 | 43-33-0150 | Grease Fitting | | | | | |
| 17 | 06-65-1650 | 1/4 x 1 1/4 Roll Pin | | | | | |

MISCELLANEOUS PARTS NOT SHOWN

| PART NO. | DESCRIPTION OF PART | PART NO. | DESCRIPTION OF PART | NO.REQ. |
|-------------|---------------------|------------|--|---------|
| 22-38-0100 | Cable Clamp | 06-81-2400 | 10-32 x 5/8 Fil. Head Cable Clamp Sems | |
| 12-98-5500 | Name Plate | 06-81-8400 | 4-40 x 1/4 Fil. Head Name Plate Sem | (2) |
| 42-28-0181 | Stop Block Assembly | 45-83-0050 | Vent | |
| ★06-42-2200 | Woodruff Key | | | |