



SERVICE PARTS LIST

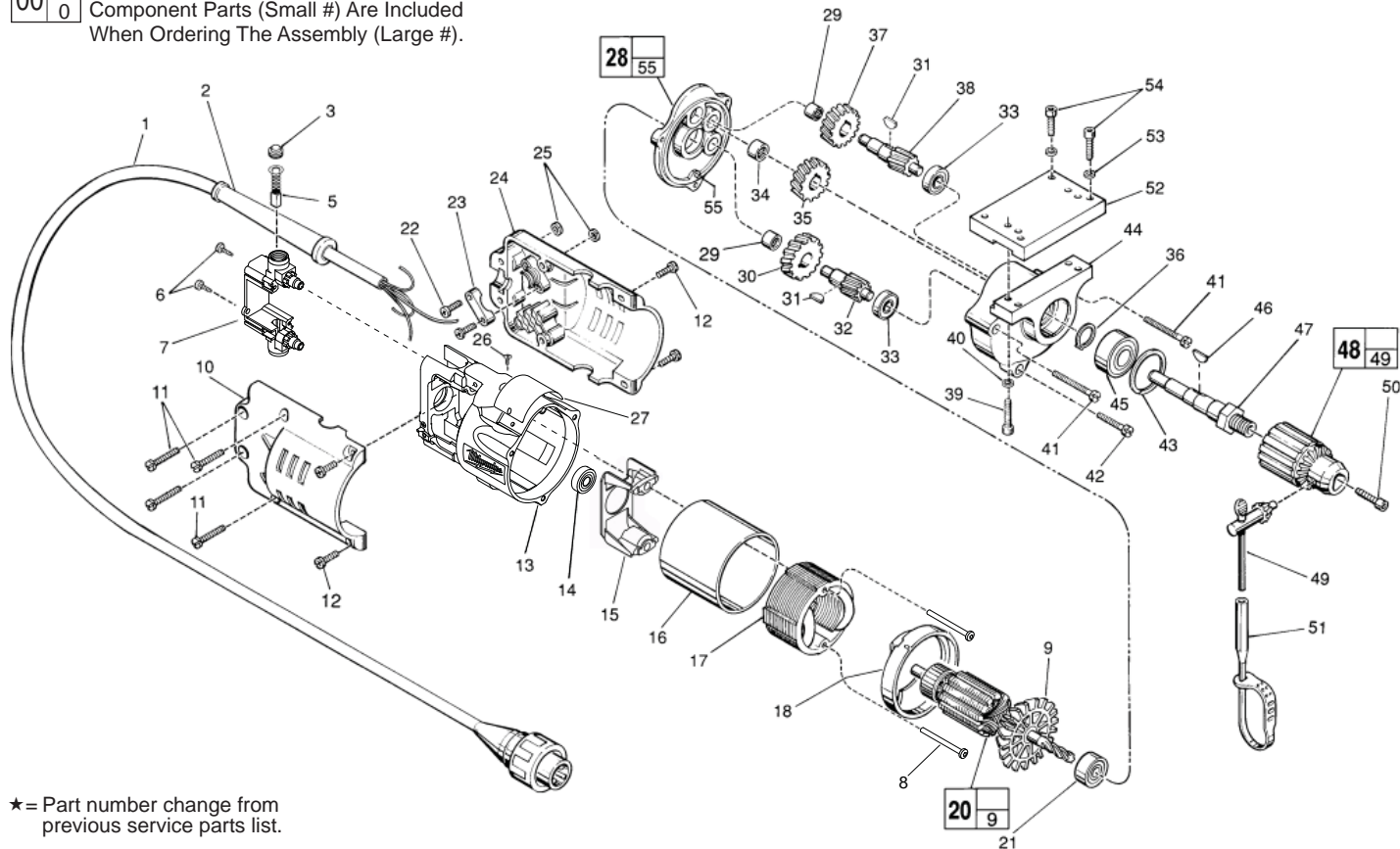
BULLETIN NO.
54-14-1124

SPECIFY CATALOG NO. AND SERIAL NO. WHEN ORDERING PARTS		REVISED BULLETIN 54-14-1123	DATE Mar. 2012
1/2" POWER PACK DRILL MOTOR			
CATALOG NO.	4253-1	STARTING SERIAL NO.	587B
		WIRING INSTRUCTION 58-01-0402	

00
0

EXAMPLE:

Component Parts (Small #) Are Included
When Ordering The Assembly (Large #).



★ = Part number change from previous service parts list.

FIG.	PART NO.	DESCRIPTION OF PART	NO. REQ.	FIG.	PART NO.	DESCRIPTION OF PART	NO. REQ.
1	22-64-0760	Cord Set	(1)	33	02-04-0640	Ball Bearing	(2)
2	44-76-0050	Cord Protector	(1)	34	02-50-2440	Needle Bearing	(1)
3	23-44-0190	Brush Retaining Screw	(2)	35	32-75-2061	Spindle Gear	(1)
5	22-18-0910	Carbon Brush Assembly	(2)	36	34-60-1200	Retaining Ring	(1)
6	06-95-0075	6-32 x 3/8" Truss Hd. Taptite Screw	(2)	37	32-75-2041	Spindle Gear	(1)
★ 7	22-22-1381	Brush Holder Assembly	(1)	38	36-66-2901	Intermediate Shaft	(1)
★ 8	06-82-7380	7-18 x 1.875" Pan Hd. Plast. T-20	(2)	39	06-75-3090	1/4-20 x 7/8" Socket Hd. Screw	(4)
9	22-84-0531	Fan	(1)	40	06-97-4050	1/4" Lockwasher	(4)
10	31-15-0120	Cover Half	(1)	41	06-82-3210	8-32 x 1-7/8" Fil. Hd. Taptite T-20	(2)
11	06-81-0425	8-32 x 7/8" Pan Hd. Screw	(4)	42	06-95-5250	8-32 x 1-1/8" Fil. Hd. Sems	(1)
12	06-82-5316	8-32 x 1/2" Pan Hd. Slit. Taptite T-20	(4)	43	34-80-2500	Retaining Ring	(1)
★ 13	28-50-6222	Motor Housing	(1)	44	28-14-0761	Gear Case	(1)
14	02-04-0845	Ball Bearing	(1)	45	02-04-1536	Ball Bearing	(1)
15	31-55-0190	Coil Shield	(1)	46	06-42-1600	Woodruff Key	(1)
16	23-16-0456	Field Insulator	(1)	47	38-50-5470	Spindle	(1)
17	18-30-0100	120 Volt Field	(1)	48	48-66-1360	1/2" Chuck	(1)
18	31-05-0055	Baffle	(1)	49	48-66-3280	Chuck Key	(1)
20	16-30-0225	120 Volt Armature	(1)	50	06-75-3150	1/4-20 x 1" L.H. Skt.Hd. Cap Screw	(1)
21	02-04-0911	Ball Bearing	(1)	51	48-66-4040	Key Holder	(1)
22	06-81-4205	6-32 x 3/4" Pan Hd. Phillips Mach. Scr.	(2)	52	42-04-0580	Adaptor Plate	(1)
23	31-17-0065	Cord Clamp	(1)	53	06-97-4050	1/4" Lockwasher	(4)
24	31-15-0121	Cover Half Assembly	(1)	54	06-75-3050	1/4-20 x 3/4" Socket Hd. Screw	(4)
25	06-55-0825	8-32 Hex Nut	(4)	55	06-65-0825	Groove Pin	(1)
26	06-72-1720	Nameplate Rivet	(2)				
27	12-99-1305	Service Nameplate	(1)				
28	28-28-0611	Diaphragm	(1)				
29	02-50-1640	Needle Bearing	(2)				
30	32-40-1241	Intermediate Gear	(1)				
31	06-42-0800	Woodruff Key	(2)				
32	36-66-2801	Intermediate Shaft	(1)				

FIG. LUBRICATION

44 3-1/4 Oz. Type "A" Grease, No. 49-08-0800