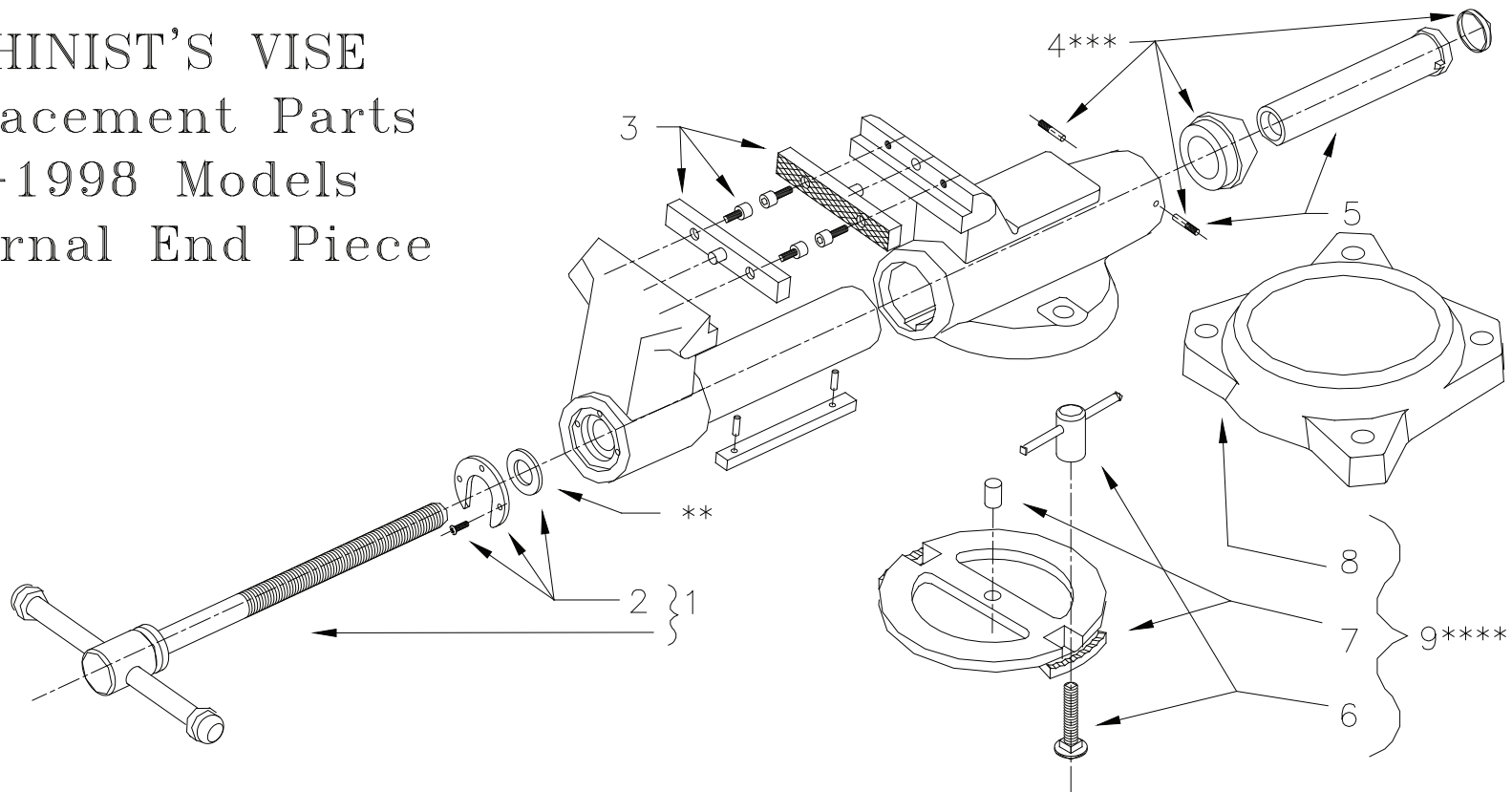


MACHINIST'S VISE

Replacement Parts

Pre-1998 Models

External End Piece



WILTON MODEL NUMBER	MOVEABLE * JAW CASTING NUMBER, REFERENCE	ITEM #1** SPINDLE ASSEMBLY WITH #2	ITEM #2** RING WITH (3) SCREWS & WASHER	ITEM #3 SERRATED JAW INSERTS W/ SCREWS	ITEM #3a SMOOTH JAW INSERTS W/ SCREWS	ITEM #4*** END PIECE ASSEMBLY W/ 2 PINS	ITEM #5 SPINDLE NUT, WITH 2 PINS	ITEM #6**** LOCK NUT AND BOLT ASSEMBLIES	ITEM #7**** INNER RING WITH DOWEL PIN	ITEM #8**** OUTER RING ONLY	ITEM #9**** SWIVEL BASE ASSEMBLY #6, #7,& #8
250	101008	2900060	2904280	NOT AVAIL.	NOT AVAIL.	2904290	2900070	2904330	NOT AVAIL.	NOT AVAIL.	NOT AVAIL.
300	101014	2900000	2904000	2903080	2903090	2904340	2903110	2904060	1010900	1012010	2904370
350 (Old)	101019	2900150	2904000	NOT AVAIL.	NOT AVAIL.	2904380	2900130	2904270	1010880	NOT AVAIL.	2904050
350 (New)	101161	2900150	2904000	2904960	2904970	2904380	2900130	2904270	1010880	1011990	2904050
400 (Old)	101027	2900020	2904010	NOT AVAIL.	NOT AVAIL.	2904410	2900120	2904270	1010810	1011980	2904120
400 (New)	101158	2900020	2904010	2904980	2904990	2904410	2900120	2904270	1010810	1011980	2904120
450 (Old)	101032	2900030	2904010	NOT AVAIL.	NOT AVAIL.	2905290	2907670	2904270	1010810	1011980	2904120
450 (1971)	101163	2900030	2904010	2905000	2905010	2905290	2907670	2904270	1010810	1011980	2904120
450 (1996)	101134	2900030	2904010	2905000	2905010	2905290	2907670	2904270	1010810	1011980	2905390
500 (Old)	101042	2900040	2904070	2903240	NOT AVAIL.	2904470	2900110	2904270	1010810	1011980	2904120
500 (New)	101215	2900040	2904070	2905020	2905030	2904470	2900110	2904270	1010810	1011980	2904120
600	101203	2900050	2904500	2903280	NOT AVAIL.	2905280	2900100	2904160	1010830	1010840	2904150
800	101105	2904540	2904540	2904940	NOT AVAIL.	2904550	2900090	2905230	1011070	1011080	2904580

* The moveable jaw casting number is used as a reference to aid in the identification of correct parts.

** Washer was not originally furnished with these vises, but may be used to compensate for counterbore wear.

*** The end piece is attached to, and becomes an integral part of the stationary jaw casting. The end cap is small and fits into the end piece.

**** Items 6 thru 9 are not used on "N" model vises.

