

# OPERATING INSTRUCTIONS AND PARTS LIST FOR

CATALOG NUMBER  
**4792**



MILWAUKEE ELECTRIC TOOL CORP.

AC ALTERNATOR

DEPENDABLE POWER

WHEN ORDERING REPAIR PARTS, ALWAYS GIVE THE FOLLOWING  
INFORMATION AS SHOWN IN THIS LIST:

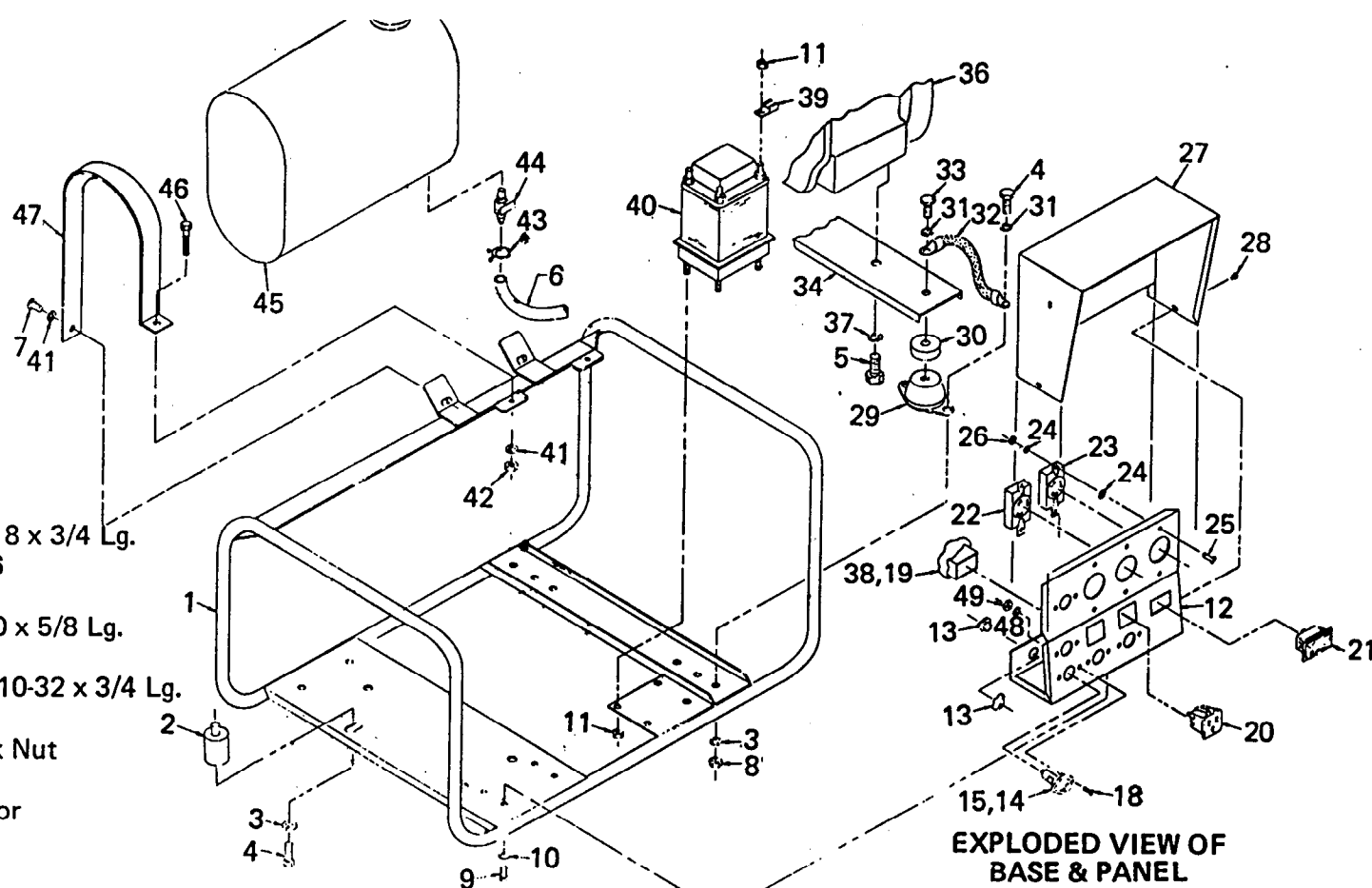
- |                                 |                                    |
|---------------------------------|------------------------------------|
| 1. M.E.T.CO. PART NUMBER        | 3. M.E.T.CO. CAT. NO. 4792         |
| 2. The PART NAME                | 4. The NAME of Item: AC ALTERNATOR |
| 5. STARTING SERIAL NO. 511-1001 |                                    |

**MILWAUKEE ELECTRIC TOOL CORPORATION  
13135 WEST LISBON ROAD  
BROOKFIELD, WISCONSIN 53005**



Printed in USA-100

**IMPORTANT . . . SAVE THIS FOR FUTURE REFERENCE**

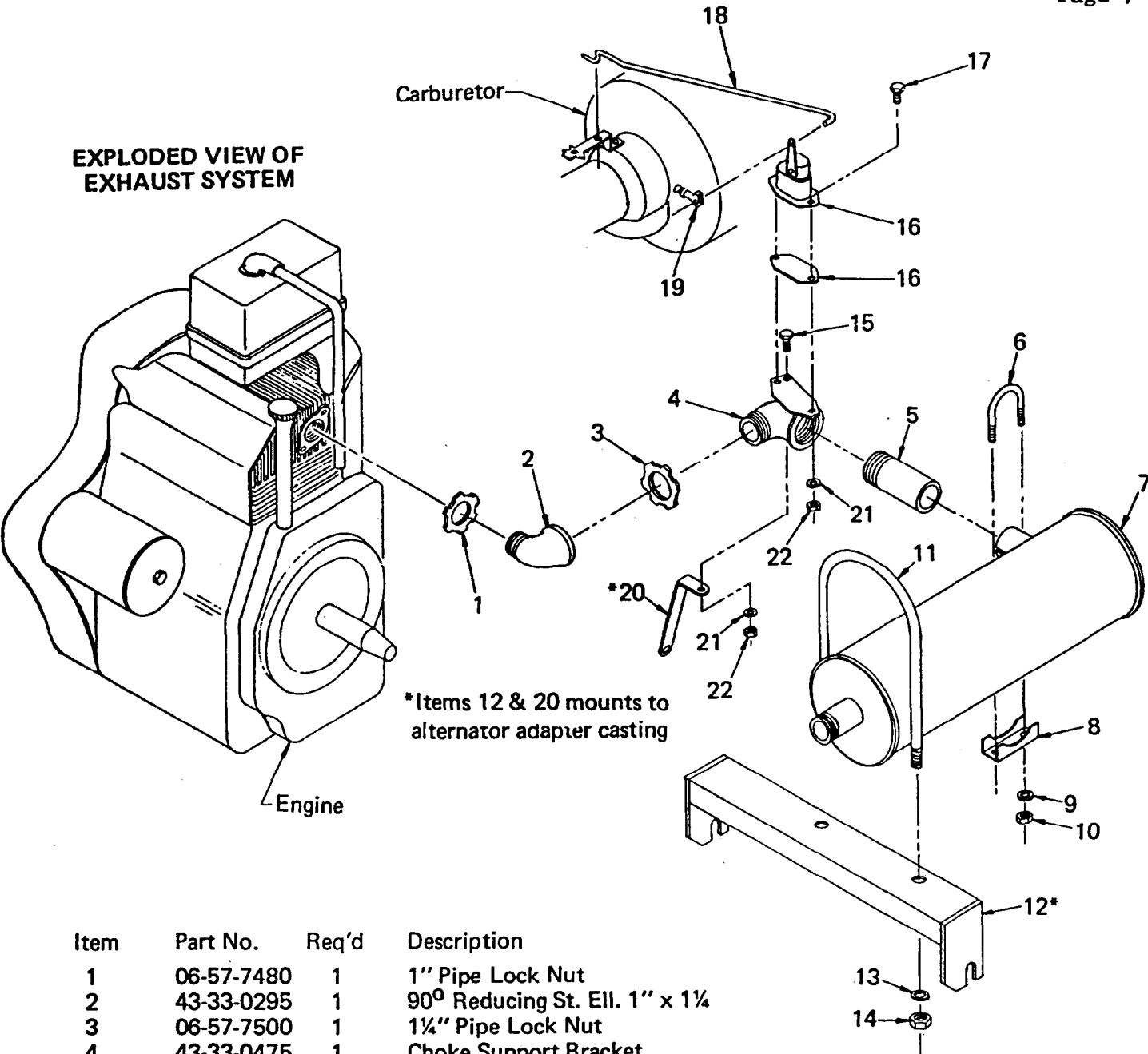


Item	Part No.	Req'd	Description
1	42-20-0445	1	Mounting Base
2	43-33-0485		Vibration Dampner
3	06-97-4100	8	Lock Washer 5/16
4	06-75-0300	5	Hex Hd. Cpsc. 5/16-18 x 3/4 Lg.
5	06-75-0495	2	Hex Hd. Cpsc. 3/8-16
6	45-76-0210	1	Fuel Line
7	06-81-4720	2	Rd.Hd.Mach.Sc. 1/4-20 x 5/8 Lg.
8	06-55-1980	8	Hex Nut 5/16-18
9	06-75-0020	4	Hex Hd.Mach.Sc.No.10-32 x 3/4 Lg.
10	06-97-3400	4	No. 10 Lockwasher
11	06-57-3000	5	No. 10-32 Lokut Hex Nut
12	23-35-0175	1	Control Panel
13	22-56-0060	2	3/8 Straight Connector
14	23-04-0060	5	Fuse Holder
15	22-89-0075	3	Fuse 30 Amp
16	22-89-0060	2	Fuse 15 Amp (Not Shown)
17	23-04-0070	1	Fuse Holder
18	06-81-5630	11	Phil.Pan Hd.Mach.Sc.No. 8-32 x 1/2 Lg.
19	42-36-0397	1	Rectifier Supt. Assembly
20	23-33-0130	2	115-V Parallel Blade Outlet
21	23-66-0950	1	Switch Spst.
22	23-33-0240	2	125-V 30A Twist-Lok Plug
23	23-33-0265	1	250-V 30A Twist-Lok Plug
24	06-97-0870	12	No. 10 External Shakeproof
25	06-81-4212	6	Phillips Pan Hd.Mach.Sc.No.10-32 x 1/2 Lg.
26	06-55-1100	8	Hex Nut No. 10-32
27	45-12-0285	1	Panel Shroud
28	06-81-0275	4	Whiz Screw
29	43-33-0310	2	Vibration Dampner
30	45-36-0785	2	Spacer
31	06-97-1020	2	5/16 External Shakeproof
32	45-56-0150	1	Ground Strap
33	06-75-0525	3	Hex Hd.Cpsc. 3/8-16 x 1 1/4 Lg.

Item	Part No.	Req'd	Description
34	42-36-0395	1	Engine Support
35	22-89-0100	1	Fuse 30 Amp
36	43-20-5000	1	Engine HH 160
37	06-97-4125	2	3/8 Lock Washer
38	23-38-2635	1	Rectifier Assembly
39	23-74-0480	1	Ground Terminal
40	23-81-0210	1	Reactor Assembly
41	06-97-5600	2	External Shakeproof 1/4
42	06-55-1500	2	Hex Nut 1/4-20
43	42-68-0355	1	Hose Clamp
44	45-80-0145	1	Shut Off Valve
45	45-66-0065	1	Fuel Tank
46	06-75-0200	2	Hex Hd.Cpsc. 1/4-20 x 1 1/4 Lg.
47	45-56-0140	2	Tank Strap
48	06-97-3200	10	No. 8 Lock Washer
49	06-55-0825	10	Hex Nut No. 8-32
50	23-33-0245	2	125-V 30A Twist-Lok Plug (Not Shown)
	23-33-0270	1	250-V 30A Twist-Lok Plug (Not Shown)

Control No.  
38849

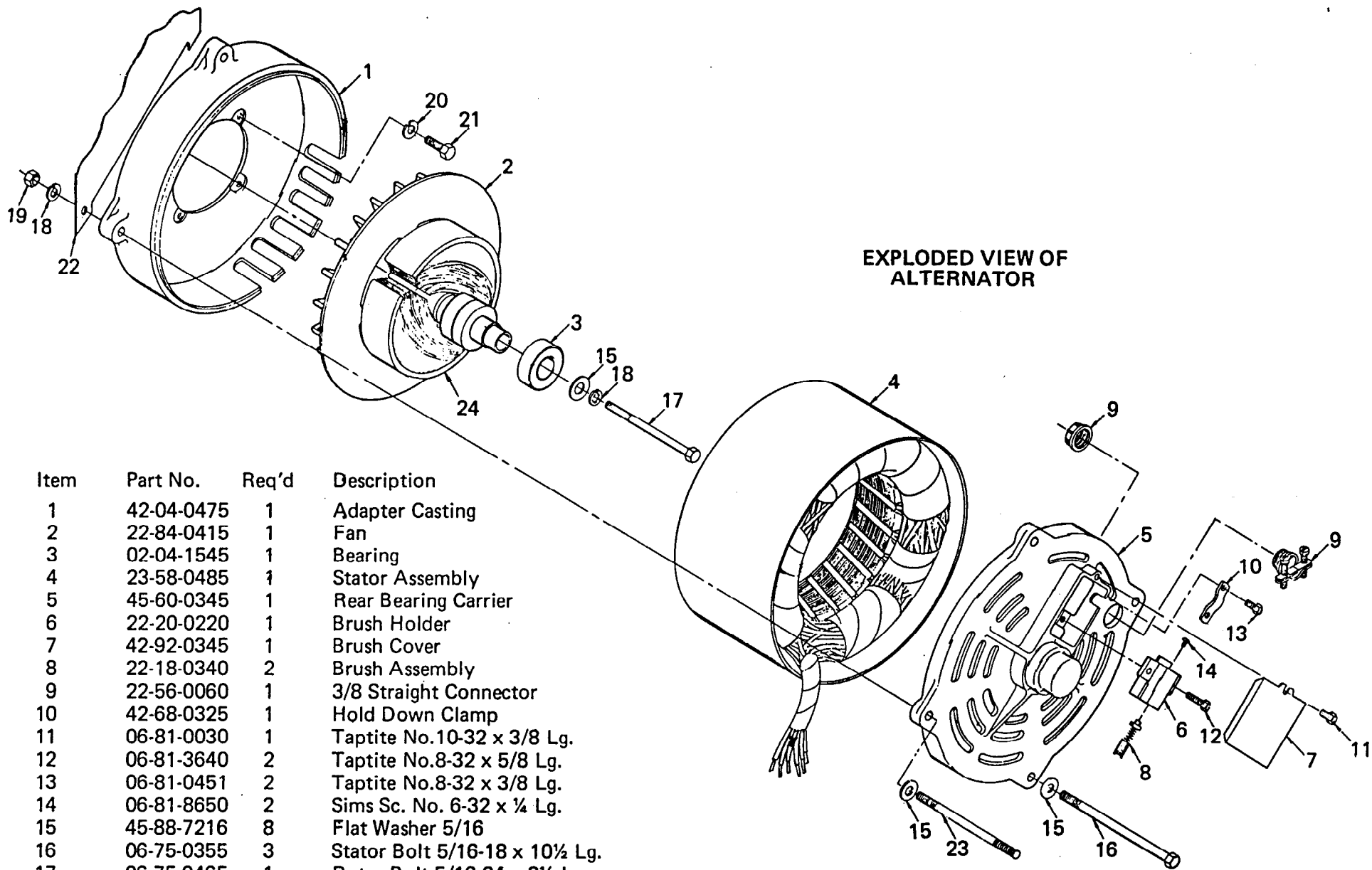
**EXPLODED VIEW OF  
EXHAUST SYSTEM**



\*Items 12 & 20 mounts to  
alternator adapter casting

Item	Part No.	Req'd	Description
1	06-57-7480	1	1" Pipe Lock Nut
2	43-33-0295	1	90° Reducing St. Ell. 1" x 1 1/4"
3	06-57-7500	1	1 1/4" Pipe Lock Nut
4	43-33-0475	1	Choke Support Bracket
5	43-33-0305	1	1 1/4" Half Nipple 2 1/2" Lg.
6	42-68-0330	1	1-3/4" U-Bolt
7	43-31-0250	1	Muffler
8	42-68-0335	1	1-3/4" Saddle
9	06-97-4100	2	5/16 Lock Washer
10	06-55-1980	2	5/16-18 Hex Nut
11	42-68-0340	1	U*Bolt
12	42-36-0945	1	Muffler Support Bracket
13	06-97-4125	2	3/8 Lock Washer
14	06-55-2400	2	3/8-16 Hex Nut
15	06-75-0100	1	Hex Hd.Cpsc. 1/4-20 x 3/4 Lg.
16	43-44-0310	1	Automatic Choke
17	06-75-0075	2	Hex Hd.Cpsc. 1/4-20 x 1/2 Lg.
18	44-14-0075	1	Choke Linkage
19	42-70-0175	1	Dorman Clip
20	45-60-0360	1	Choke Support
21	06-97-1000	3	1/4 Lock Washer
22	06-55-1500	3	Hex Nut 1/4-20

Control No.  
38848



Item	Part No.	Req'd	Description
1	42-04-0475	1	Adapter Casting
2	22-84-0415	1	Fan
3	02-04-1545	1	Bearing
4	23-58-0485	1	Stator Assembly
5	45-60-0345	1	Rear Bearing Carrier
6	22-20-0220	1	Brush Holder
7	42-92-0345	1	Brush Cover
8	22-18-0340	2	Brush Assembly
9	22-56-0060	1	3/8 Straight Connector
10	42-68-0325	1	Hold Down Clamp
11	06-81-0030	1	Taptite No.10-32 x 3/8 Lg.
12	06-81-3640	2	Taptite No.8-32 x 5/8 Lg.
13	06-81-0451	2	Taptite No.8-32 x 3/8 Lg.
14	06-81-8650	2	Sims Sc. No. 6-32 x 1/4 Lg.
15	45-88-7216	8	Flat Washer 5/16
16	06-75-0355	3	Stator Bolt 5/16-18 x 10 1/2 Lg.
17	06-75-0465	1	Rotor Bolt 5/16-24 x 8 1/2 Lg.
18	06-97-4100	5	5/16 Lock Washer
19	06-55-1980	7	Hex Nut 5/16-18
20	06-97-4125	4	Lock Washer 3/8
21	06-75-0495	4	Hex Hd.Cpsc. 3/8-16 x 3/4 Lg.
22	45-12-0295	1	Heat Shield
23	06-92-1395	1	Stud 5/16-18 x 12" Lg.
24	23-40-0410	1	Rotor Assembly

Control No.  
38852