



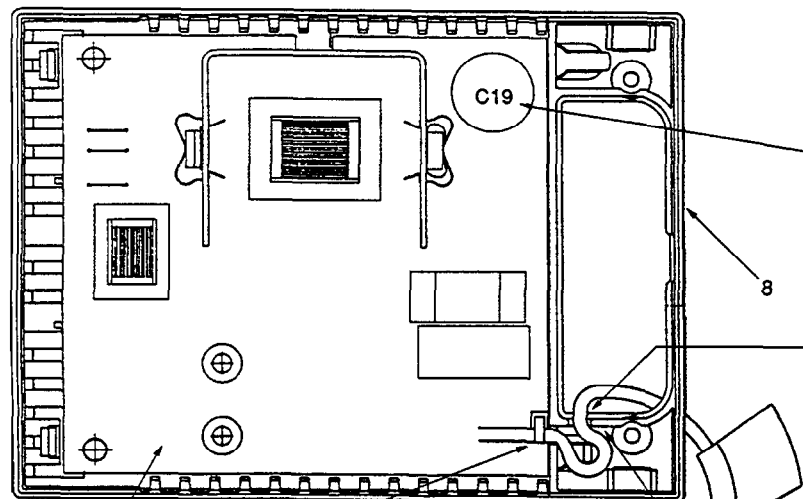
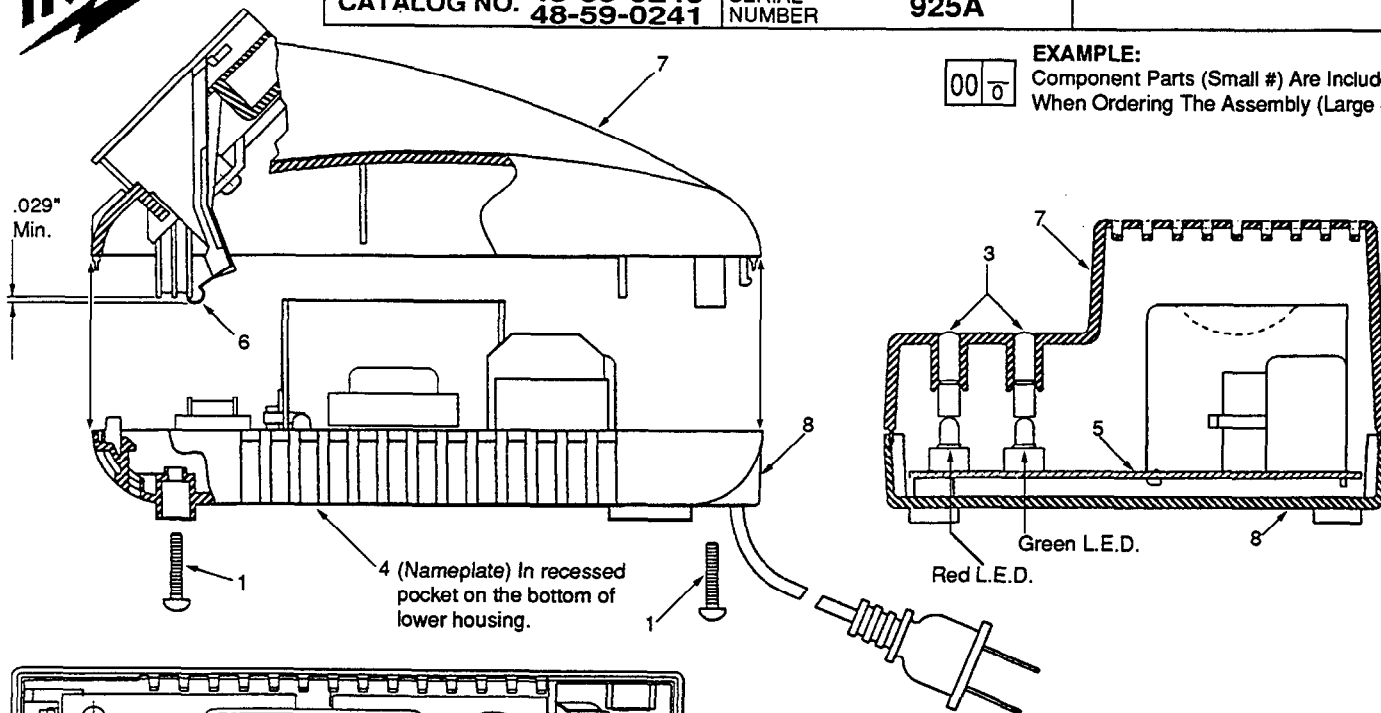
SERVICE PARTS LIST

BULLETIN NO.
54-04-0240

SPECIFY CATALOG NO. AND SERIAL NO. WHEN ORDERING PARTS		REVISED BULLETIN	DATE
POWER PLUS II FAST CHARGER			Sept. '97
CATALOG NO. 48-59-0240	SERIAL NUMBER	925A	
48-59-0241		WIRING INSTRUCTION	

00 0

EXAMPLE:
Component Parts (Small #) Are Included
When Ordering The Assembly (Large #).



WARNING
Handle circuit board with care.
High voltage, 191 VDC, may
be present at C19 and could
result in a shock.

Cordset to be positioned through lower
housing slot to allow for .50\"/>

Position plastic tie (if present)
at this location.

Cordset to be positioned around the strain
relief post in the lower housing to allow for
a .06\"/>

FIG.	PART NO.	DESCRIPTION OF PART	NO. REQ.
1	06-82-9207	6-32 x 11/16\"/>	
2	22-64-1051	Cordset	(1)
3		Light Pipe	(2)
4	12-20-0855	Service Nameplate Kit (48-59-0240)	(1)
	12-20-0880	Service Nameplate Kit (48-59-0241)	(1)
5		Circuit Board Assembly	(1)
6		Battery Contact	(3)
7	31-50-1392	Upper Housing	(1)
8	31-50-1355	Lower Housing	(1)

FIG. NOTES

- 5 Circuit board assembly to be fully seated on the lower housing screw bosses so that the top of the boss is flush with, or above, the top of the circuit board assembly.
- 2 Cordset terminals to be fully seated on their mating terminals and separated from one another by a minimum of .125\"/>

MILWAUKEE ELECTRIC TOOL CORPORATION
13135 W. LISBON RD., BROOKFIELD, WI 53005