



SERVICE PARTS LIST

1/3 H.P. BENCH GRINDER

BUL. 54-22-0010

REVISED BUL
6286-1

DATE
May '68

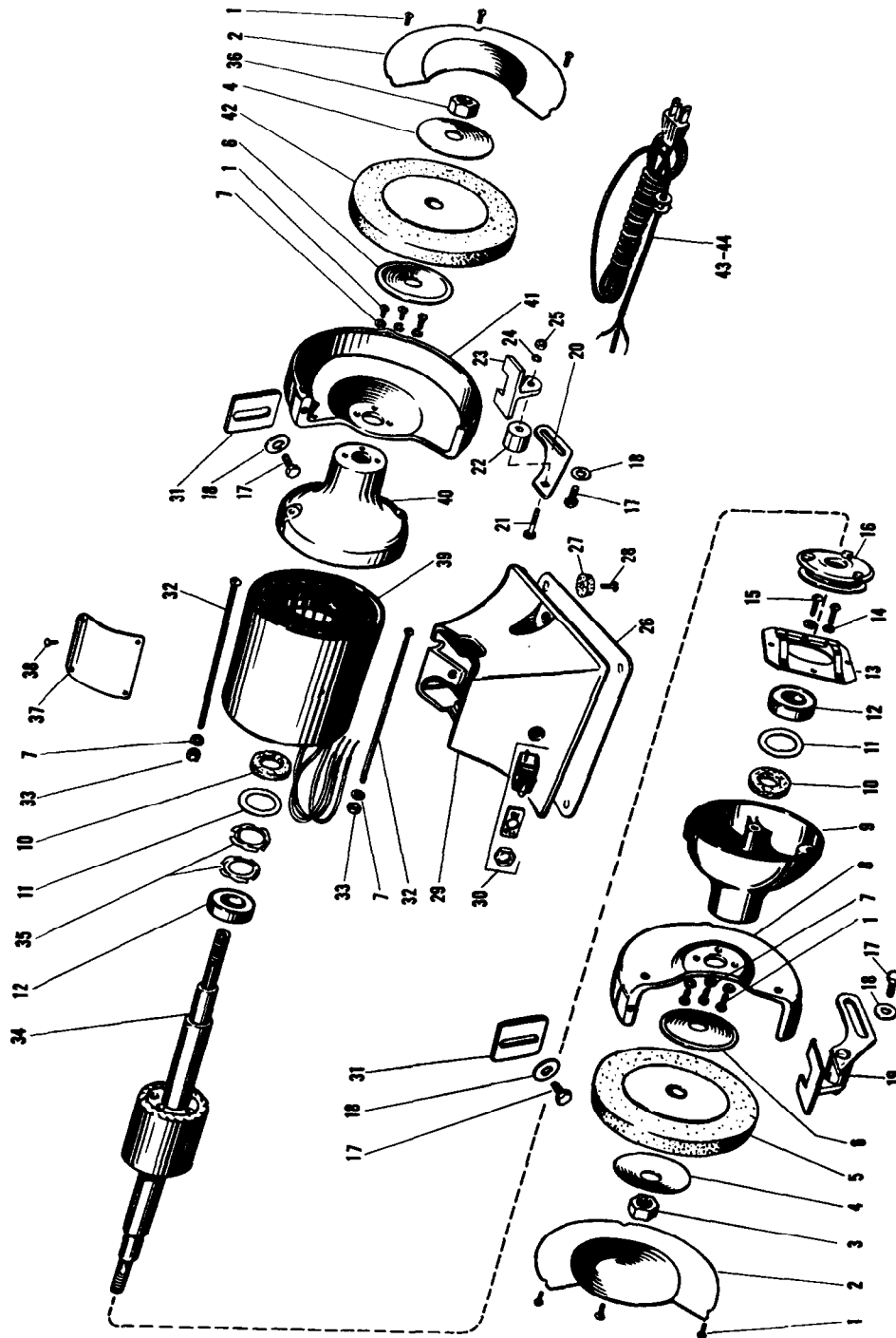
Catalog No. 4940

Starting
Serial No. 40133

WIRING INSTR.

Both Model and Serial No. must be furnished to obtain correct parts.

230 VOLT SINGLE PHASE





SERVICE PARTS LIST

1/3 H.P. BENCH GRINDER

When ordering replacement parts, please give complete motor identification number off name plate of tool.

ILLUSTRATED PARTS

FIG.	PART NO.	DESCRIPTION OF PART	FIG.	PART NO.	DESCRIPTION OF PART
1	06-81-4650	10-32x3/8 Rd. Hd. Screw	24	06-97-4000	Lock Washer
2	42-92-0210	Wheel Guard Cover	25	06-55-1500	1-4-20 Hex Nut
3	06-55-3175	1/2-20 L.H. Hex Nut	26	42-92-0120	Base Cover
4	43-34-0100	Wheel Flange, Outer	27	42-38-0110	Rubber Bumper
5	See Catalog	Grinding Wheel, 6" d. x 1/2" hole x 3/4" wd	28	06-81-4652	10-32x1/2 Rd. Hd. Screw
6	43-34-0110	Wheel Flange, Inner	29	42-20-0140	Base
7	06-97-3400	Lock Washer, 3/16 I.D. x 5/16 O.D.	30	23-66-0630	Toggle Switch
8	43-54-0190	Wheel Guard, L.H.	31	45-12-0120	Spark Shield
9	42-25-0050	Motor End Shield, L.H.	32	06-75-0056	10-32x7 Thru Bolt
10	45-88-0020	Felt Washer 21/32 I.D. x 1 3/8 O.D.	33	06-55-1100	10-32 Hex Nut
11	45-14-0050	Steel Washer 31/32 I.D. x 1,562 O.D.	34	23-40-0220	Rotor Assembly
12	02-04-5040	Ball Bearing		23-40-0230	230 Volt Rotor
13	23-66-0390	Stationary Switch	35	40-50-7655	Bearing Loading Spring
14	06-97-3200	Lock Washer	36	06-55-3150	1/2-20 Hex Nut
15	06-81-4566	8-32x3/8 Rd. Hd. Screw	37	12-98-0400	Motor Name Plate
16	23-66-0052	Rotating Switch	38	44-60-0290	Name Plate Pin
17	06-75-0075	1/4-20x1/2 Hex Hd. Cap Screw	39	23-58-0260	Stator Assembly
18	45-88-5220	Steel Washer 5/16 I.D. x 3/4 O.D.		23-58-0270	230 Volt Stator
19	44-85-0160	Tool Rest Assembly	40	45-12-0110	Motor End Shield, R.H.
20	42-36-0320	Tool Rest Bracket	41	43-54-0180	Wheel Guard, R.H.
21	06-100700	1/4-20x1-3/4 Carriage Bolt	42	See Catalog	Grinding Wheel, 6" d. x 3/4" wd. x 1/2" hole
22	45-36-0270	Tool Rest Spacer	43	22-64-0560	115 Volt Cord & 3 Prong Plug
23	44-85-0120	Tool Rest	44	22-64-0570	230 Volt Cord & 3 Prong Plug

MISCELLANEOUS PARTS NOT SHOWN

PART NO.	DESCRIPTION OF PART	PART NO.	DESCRIPTION OF PART
48-03-0010	Plug Adaptor	06-75-0295	1/4-28x7/8 Cap Screw
06-81-4567	8-32x3/8 Rd. Hd. Ground Screw (Brass)	06-97-3210	Brass Lock washer
22-38-0120	Clamp	23-16-0400	Switch Insulator
23-16-0410	Switch Insulator		