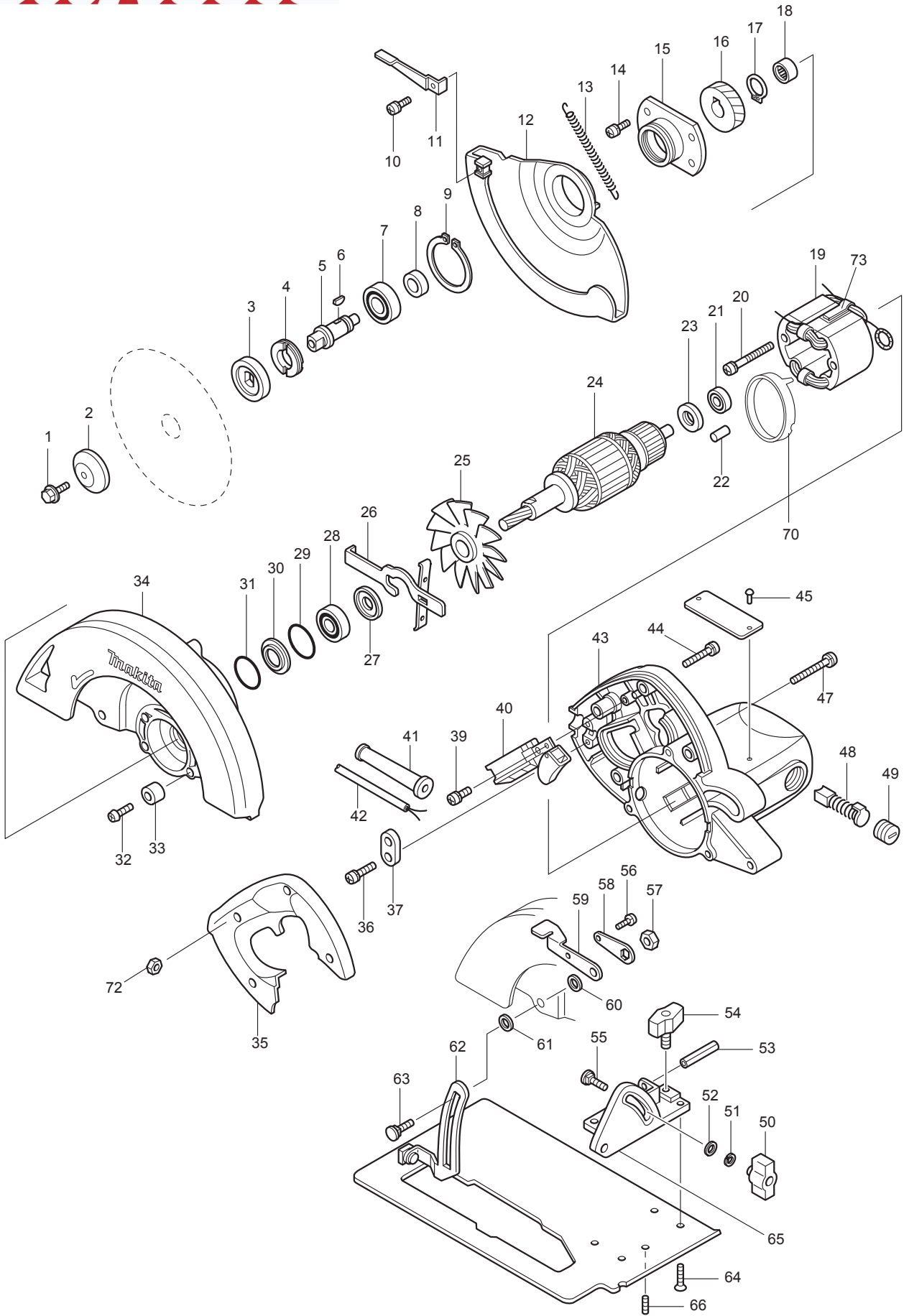




10 - 2008

5008NBA

# 8-1/4" CIRCULAR SAW with BRAKE



Item No.	Part No.	Description	Qty	Unit
1	251644-1	HEX. FLANGE HEAD BOLT M8X20	1	PC.
2	224275-9	OUTER FLANGE 40	1	PC.
3	224151-7	INNER FLANGE 40	1	PC.
4	285807-7	BEARING RETAINER 22-36	1	PC.
5	321060-2	SPINDLE (TYPE1)	1	PC.
	323789-6	SPINDLE (TYPE2)	1	PC.
6	254032-1	WOODRUFF KEY 5	1	PC.
7	211206-7	BALL BEARING 6202LLB	1	PC.
8	257064-7	RING 15	1	PC.
9	961201-4	RETAINING RING S-42	1	PC.
10	911111-5	PAN HEAD SCREW M4X10 (TYPE1)	1	PC.
	911106-8	PAN HEAD SCREW M4X8 (TYPE2)	1	PC.
11	341417-1	LEVER	1	PC.
12	315325-2	SAFETY COVER	1	PC.
13	231753-2	TENSION SPRING 5	1	PC.
14	911126-2	PAN HEAD SCREW M4X16	4	PC.
15	321362-6	BEARING BOX	1	PC.
16	221687-7	HELICAL GEAR 43	1	PC.
17	961055-9	RETAINING RING S-15	1	PC.
18	212052-1	NEEDLE BEARING 1010	1	PC.
19	636071-7	FIELD ASS'Y (TYPE2-3)*	1	PC.
	INC. 654020-2	RING TERMINAL	2	PC.
	INC. 654502-4	CONNECTOR P-2	2	PC.
	INC.	Item No. 73		
20	266046-8	TAPPING SCREW 5X50*	2	PC.
21	211033-2	BALL BEARING 608LB	1	PC.
22	263002-9	RUBBER PIN 4 (F/ MOTOR HOUSING) ( OLD)*	1	PC.
23	681625-5	INSULATION WASHER	1	PC.
24	616606-0	ARMATURE ASS'Y 115V (TYPE2-3)*	1	PC.
24	INC.	Item No. 21, 25, 27, 28		
25	241513-4	FAN 92 (F/ ARMATURE ASS'Y)	1	PC.
26	163113-9	SPINDLE LOCK	1	PC.
27	213102-5	DUST SEAL 12	1	PC.
28	211106-1	BALL BEARING 6201LLB	1	PC.
29	213459-4	O RING 32	1	PC.
30	341736-5	WASHER 25	1	PC.
31	213412-0	O RING 29	1	PC.
32	251350-8	+ COUNTERSUNK HEAD SCREW M6X28 (TYPE3)*	1	PC.
33	262553-9	RUBBER SLEEVE 6 (TYPE3)*	1	PC.
34	154888-1	BLADE CASE COMPLETE (TYPE3)*	1	PC.
	INC. 321062-8	HOOK PIN	1	PC.
	INC.	Item No. 18, 29		
35	416889-0	HANDLE COVER (TYPE3)*	1	PC.
36	265995-6	TAPPING SCREW 4X18 (TYPE3)*	2	PC.
37	687063-9	STRAIN RELIEF (TYPE3)*	1	PC.
39	266020-6	TAPPING SCREW 4X12 (TYPE3)*	1	PC.
40	651042-3	SWITCH	1	PC.
41	682505-8	CORD GUARD 10-90	1	PC.
42	664265-4	CORD WITH PLUG 2P-16-2.5M (OLD#664213-3 - N/L/A)	1	PC.

Item No.	Part No.	Description	Qty	Unit
43	156465-5B	MOTOR HOUSING COMPLETE (TYPE1-2 - N/L/A)*	1	PC.
	INC. 643660-1	BRUSH HOLDER 6.5-13.5	2	PC.
	INC.	Item No.22		
	152928-9	MOTOR HOUSING COMPLETE (TYPE3)*	1	PC.
	INC. 643660-1	BRUSH HOLDER 6.5-13.5 (TYPE1)	2	PC.
	INC. 643653-8	BRUSH HOLDER 6.5-13.5 (TYPE2)	2	PC.
	913206-0	SET SCREW M5X8 (F/ OLD MOTOR HOUSING)	1	PC.
44	265995-6	TAPPING SCREW 4X18 *	4	PC.
45	953106-2	RIVET 0-5 (OLD)	2	PC.
47	911273-9	PAN HEAD SCREW M5X50	3	PC.
48	181047-4	CARBON BRUSH CB-154 2PCS/PK	1	SET
	181048-2	A.C. CARBON BRUSH CB-155, 2PCS/PK - OPTIONAL	1	SET
49	643650-4	BRUSH HOLDER CAP 6.5-13.5	2	PC.
50	252624-0	WING NUT M6	1	PC.
51	942151-2	SPRING WASHER 6	1	PC.
52	941151-9	FLAT WASHER 6	1	PC.
53	951225-8	SPRING PIN 6-40	1	PC.
54	251858-2	SCREW M6X15	1	PC.
55	251920-3	CAP SQUARE NECK BOLT M6X30	1	PC.
56	911106-8	PAN HEAD SCREW M4X8	1	PC.
57	931402-8	HEX. NUT M8	1	PC.
58	341415-5	LOCK PLATE	1	PC.
59	341416-3	LEVER PLATE	1	PC.
60	941201-0	FLAT WASHER 8	1	PC.
61	267096-6	FLAT WASHER 8 (TYPE2)*	1	PC.
62	163250-9	BASE	1	PC.
63	265965-5	CAP SQUARE NECK BOLT M8X24 (TYPE2)*	1	PC.
64	912212-2	COUNTERSUNK HEAD SCREW M5X12 (TYPE1)	5	PC.
	912212-2	COUNTERSUNK HEAD SCREW M5X12 (TYPE2)	4	PC.
65	163253-3	ANGULAR PLATE	1	PC.
66	265882-9	- SCREW M5X12 (TYPE1)	1	PC.
	266180-4	+ SCREW M5X12 (TYPE2)	1	PC.
	266213-5	H.S.SET SCREW (FLAT POINT) M5X12 (TYPE3)	1	PC.
70	415603-1	FAN GUIDE*	1	PC.
72	931102-0	HEX NUT M4 (OLD)*	4	PC.
73	687080-9	FIELD CLAMP*	2	PC.
100	652021-4	SCREW#5-40 UNCX5	3	PC.
101	654001-6	TERMINAL R1.25-3.5 (F/ SWITCH)	1	PC.
102	654510-5	CLOSED END CONNECTOR 5.5- SD	1	PC.

### **ACCESSORIES**

A01	*****	8-1/4"C.T SAW BLADE (SEE CATALOGUE FOR DETAILS)	1	PC.
A02	782016-4	OFFSET WRENCH 13	1	PC.
A03	164095-8	GUIDE RULE	1	PC.

**INC.=INCLUDES**

**\* SEE SERVICE CHANGE**

**1. Service Change on Armature, Field, Motor Housing, etc.**

Item No.	Description	TYPE1	TYPE2	TYPE3
24	Armature Ass'y	614586-4 (N/L/A)	616606-0	
19	Field Ass'y	524786-7	636071-7	
43	Motor Housing Com.	156465-5B (N/L/A)		152928-9
20	Screw	911280-2 (P.H.M5x55)	911676-7 (P.H.M5x55)	266046-8 (TAPPING SCREW 5x50)
70	Fan Guide	N/A	415603-1	
73	Field Clamp	N/A	687080-9	
35	Handle Cover	411523-7B		416889-0
37	Strain Relief	687001-1		687063-9
36	Screw	911131-9 (P.HM4x18)		265995-6 (Tapping 4x18)
72	Hex Nut M4	931102-0		N/A
22	Rubber Pin	263002-9		N/A
39	Screw 4x12	911119-9 (P.H M4X12)		266020-6 (Tapping 4x12)
44	Screw	911148-2 (P.H.M4x25)		265995-6 (Tapping 4x18)

**Above Parts are interchangeable as a set.**

**2. Service Change on Flat Washer**

Item No.	Description	TYPE1	TYPE2
61	Flat Washer	253069-5 (ID=12mm)	267096-6 (ID=8mm)
63	C.H.Bolt M8X24	251918-0	265965-5

**Above Parts are interchangeable as a set.**

**ID=Inside Diameter**

**3. Service Change on Blade Case**

Item No.	Description	TYPE1	TYPE2	TYPE3
34	Blade Case	154345-9 (Gold)	153305-8 (N/L/A) (Old 1543221-1 -N/L/A)	154888-1
33	Rubber Sleeve 6	262502-6		262553-9
32	C. H.Screw	251247-1 (M6x20)		251350-8 (M6x28)

**Above Parts are interchangeable as a set.**