



Pneumatic 1" Impact Wrench

#505108, JAT-108



Operation & Parts Manual

M-505108

Edition 1

05/2019

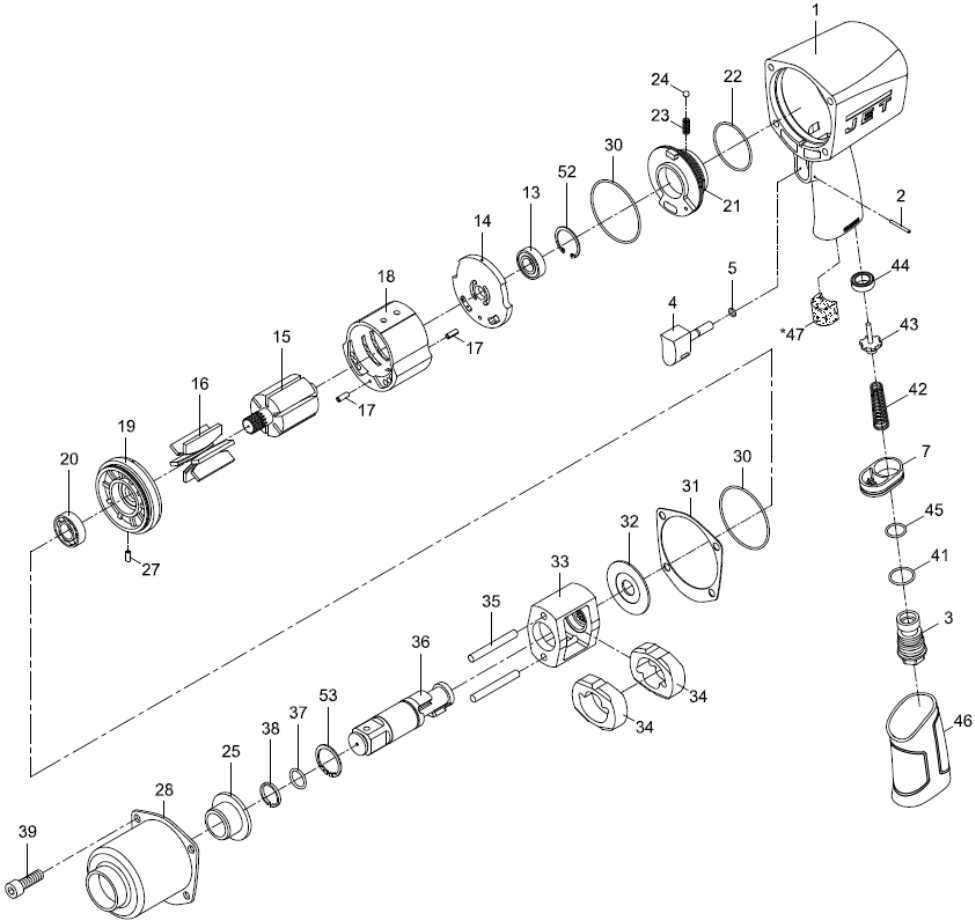


Stock No.:
Serial No.:
Purchased from:
Date purchased:

JET
427 New Sanford Road
LaVergne, TN 37086
Ph.: 800-274-6848
www.jettools.com

Copyright © 2019 JET

#505108, JAT-108, 1-inch Impact Wrench – exploded view



#505108, JAT-108, 1-inch Impact Wrench – parts list

#	Part No.	Description	Qty
1	JAT105-01	Motor housing	1
2	JAT101-02	Spring pin 2x20L mm	1
3	JAT108-03	Air inlet *	1
4	JAT105-04	Trigger *	1
5	JAT101-05	O-Ring 4x1 mm *	1
7	JAT101-07	Exhaust diffuser	1
13	BB-6002ZZ	Ball bearing 6002ZZ *	1
14	JAT105-14	Rear end plate *	1
15	JAT105-15	Rotor	1
16	JAT105-16	Rotor vane *	6
17	JAT104-17	Spring pin 3x8L mm *	2
18	JAT105-18	Cylinder *	1
19	JAT105-19	Front end plate *	1
20	JAT105-20	Ball bearing 6003Z *	1
21	JAT105-21	Air regulator	1
22	JAT105-22	O-Ring 45.5x2 mm *	1
23	JAT101-23	Spring	1
24	SB-9/64	Steel ball 9/64 in.	1
25	JAT105-25	Anvil bushing *	1
27	JAT741-21	Spring pin 3x6L mm *	1
28	JAT105-28	Hammer case *	1
30	JAT105-30	O-Ring 64.8x1.6 mm *	2
31	JAT105-31	Gasket *	1
32	JAT105-32	Washer	1
33	JAT105-33	Hammer cage *	1
34	JAT105-34	Hammer *	2

#	Part No.	Description	Qty
35	JAT105-35	Hammer pin 7.6x63.5 mm *	2
36	JAT108-36	Anvil 1 in. *	1
37	JAT108-37	O-Ring 17.8x2.4 mm *	1
38	JAT108-38	Socket retainer *	1
39	TS-1504051	Soc. Hd. Cap Screw M8x25	4
41	JAT101-41	O-Ring 20.35x1.78 mm *	1
42	JAT101-42	Valve spring	1
43	JAT101-43	Valve stem	1
44	JAT101-44	Rubber spacer	1
45	JAT101-45	O-Ring 15.7x1.7 mm *	1
46	JAT101-52	Rubber grip	1
47	JSM7572-67	Damping material	1
52	JAT105-52	Retaining ring RTW-32	1
53	JAT108-53	Inverted Retaining Ring	1
	JAT108-HCK	Hammer Case Kit - #25,28	
	JAT108-AA	Anvil Assembly - #36,37	
	JAT108-HK	Hammer Kit - #33, 34(2),35(2)	
	JAT108-FEPK	Front End Plate Kit - #19,20,27	
	JAT108-REPK	Rear End Plate Kit - #13,14	
	JAT108-AIK	Air Inlet Kit - #3,41,45	
	JAT108-RK	Trigger Kit - #4,5	
	JAT108-RPK	Repair Kit - #5,16(6),22,30(2),31,37,38	
	JAT108-RBK	Rebuild Kit - #14,17(2),18,19,27,35(2),36,37	

* These parts are only provided in the larger kit or assembly.