



# Pneumatic Metal Shear

#505910, JAT-910



## Operation & Parts Manual

M-505910  
Edition 3  
11/2018

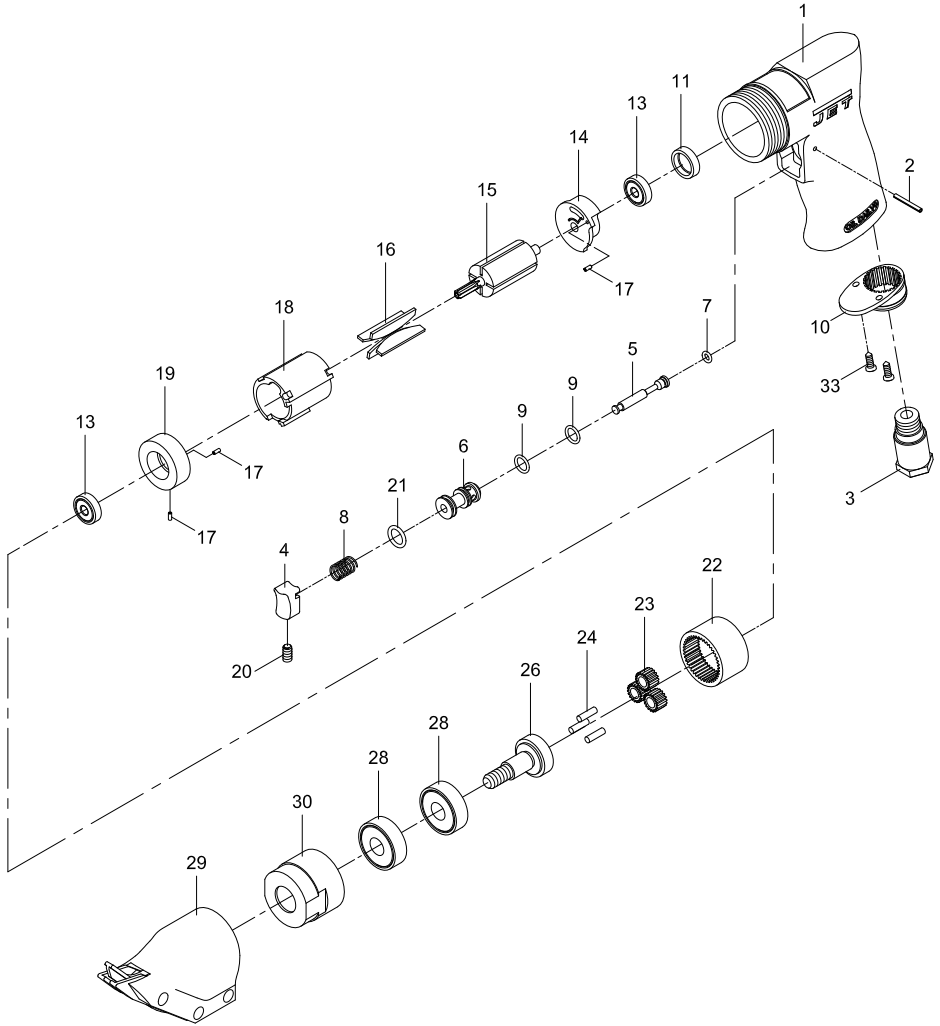


Stock No.:
Serial No.:
Purchased from:
Date purchased:

**JET**  
427 New Sanford Road  
LaVergne, TN 37086  
Ph.: 800-274-6848  
[www.jettools.com](http://www.jettools.com)

Copyright © 2015 JET

# #505910, JAT-910, Pneumatic Shear – exploded view



## #505910, JAT-910, Pneumatic Shear – parts list

Index	Part No.	Description	Qty
1	JAT910-01	Motor housing	1
2	73402	Spring pin 2.5x22pL	1
3	70103	Air inlet	1
4	70104	Trigger	1
5	JAT910-05	Valve stem	1
6	JAT910-06	Valve bushing	1
7	70107	O-Ring 4.8x1.9	1
8	70108	Valve spring	1
9	70109NPN	O-Ring 9.8x1.9	2
10	JAT620-11	Exhaust diffuser	1
11	SM-30111	Cap	1
13	BB-626ZZ	Ball bearing 626ZZ	2
14	JAT910-14	Rear end plate	1
15	JAT910-15	Rotor	1

Index	Part No.	Description	Qty
16	JAT910-16	Rotor vane	4
17	70117	Spring pin 2x5L	3
18	70118	Cylinder	1
19	JAT910-19	Front end plate	1
20	TS-1521031	Set screw M4x8L	1
21	70123	O-Ring 11.8x2.4	1
22	80222	Internal gear	1
23	JAT620-23	Planet gear	3
24	30124	Pin 4x13.8L	3
26	JAT910-26	Work spindle	1
28	BB-6201Z	Ball bearing 6201Z	2
29	JAT910-28	Shear head set	1
30	JAT910-30	Front housing	1
33	40309	Screw TS2.9	2

JAT910-RPK, Repair Kit, contains 7,9(2),11,16(4),20,21

JAT910-RBK, Rebuild Kit, contains 23(3),29