



SERVICE PARTS LIST

BULLETIN NO.
54-22-1250

SPECIFY CATALOG NO. AND SERIAL NO. WHEN ORDERING PARTS		REVISED BULLETIN	DATE
1 H.P. BENCH GRINDER W/LIGHTED EYESHIELDS			Nov. 2002
CATALOG NO. 5091	STARTING SERIAL NUMBER	W10-86	
		WIRING INSTRUCTION 58-01-0026	

EXAMPLE:
Component Parts (Small #)
Are Included When Ordering
The Assembly (Large #).

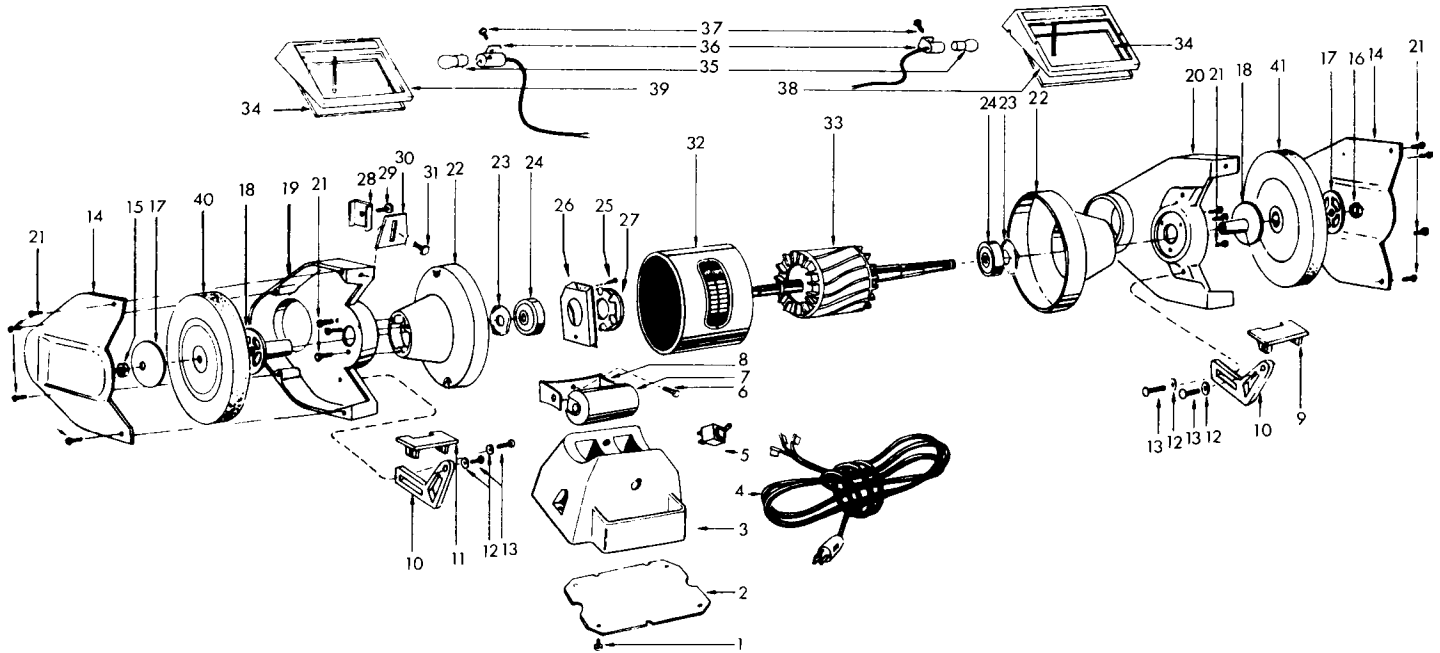


FIG.	PART NO.	DESCRIPTION OF PART	QTY	FIG.	PART NO.	DESCRIPTION OF PART	QTY
1	06-75-0300	Cap Screw 5/16"-18 x 3/4"	(4)	26	23-66-1610	Stationary Switch	(1)
2	44-66-5690	Base Plate	(1)	27	23-66-1590	Rotary Switch	(1)
3	42-20-0650	Base	(1)	28	42-70-5060	Eyeshield Clip	(2)
4	22-64-1120	Cord Set	(1)	29	06-75-0200	Cap Screw 1/4"-20 x 1-1/4"	(2)
5	23-66-1560	Toggle Switch	(1)	30	45-12-0400	Spark Shield	(2)
6	06-81-2661	Machine Screw 10-24 x 3/8"	(1)	31	06-75-0690	Cap Screw 7/16"-14 x 1"	(2)
7	22-33-0340	Capacitor	(1)	32	23-58-0740	Stator	(1)
8	22-40-0120	Capacitor Bracket	(1)	33	23-40-0630	Rotor (Incl. Fig. 27)	(1)
9	44-85-0210	Right Tool Rest	(1)	34	49-62-0115	Replacement Plexiglas Lens	(2)
10	42-09-0030	Tool Rest Arm	(2)	35	22-23-0010	Automotive Bulb	(2)
11	44-85-0220	Left Tool Rest	(1)	36	23-33-0430	Light Socket	(2)
12	45-88-8090	Flat Washer 3/8"	(4)	37	06-75-0022	Cap Screw 10-24 x 5/16"	(2)
13	06-75-0695	Cap Screw 7/16"-14 x 1-1/2"	(4)	38	43-40-0260	Right Eyeshield Frame (Incl. Fig. 34)	(1)
14	42-92-0710	Guard Cover	(2)	39	43-40-0270	Left Eyeshield Frame (Incl. Fig. 34)	(1)
15	06-55-3510	Left Hand Hex Nut 3/4"-10	(1)	40	-----	Grinding Wheel 10" x 1" x 3/4" (see cat.)	(1)
16	06-55-3520	Right Hand Hex Nut 3/4"-10	(1)	41	-----	Grinding Wheel 10" x 1" x 3/4" (see cat.)	(1)
17	43-34-0630	Outside Flange	(2)	---	12-99-0460	Nameplate	(1)
18	43-34-0650	Inside Flange	(2)				
19	43-54-0640	Left Guard	(1)				
20	43-54-0650	Right Guard	(1)				
21	06-75-0105	Cap Screw 1/4"-20 x 3/4"	(14)				
22	42-25-2550	Endbell	(2)	---	22-90-0180	Grommet	(1)
23	45-88-8115	Bearing Felt Washer	(2)	---	06-08-0070	Thru Bolt 10-24 x 8-1/4"	(4)
24	02-04-2035	Bearing	(2)	---	06-55-1050	Hex Nut 10-24	(6)
25	06-95-0110	Pan Head Screw Taptite 6-32 x 5/16"	(2)				

Items Not Shown