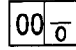


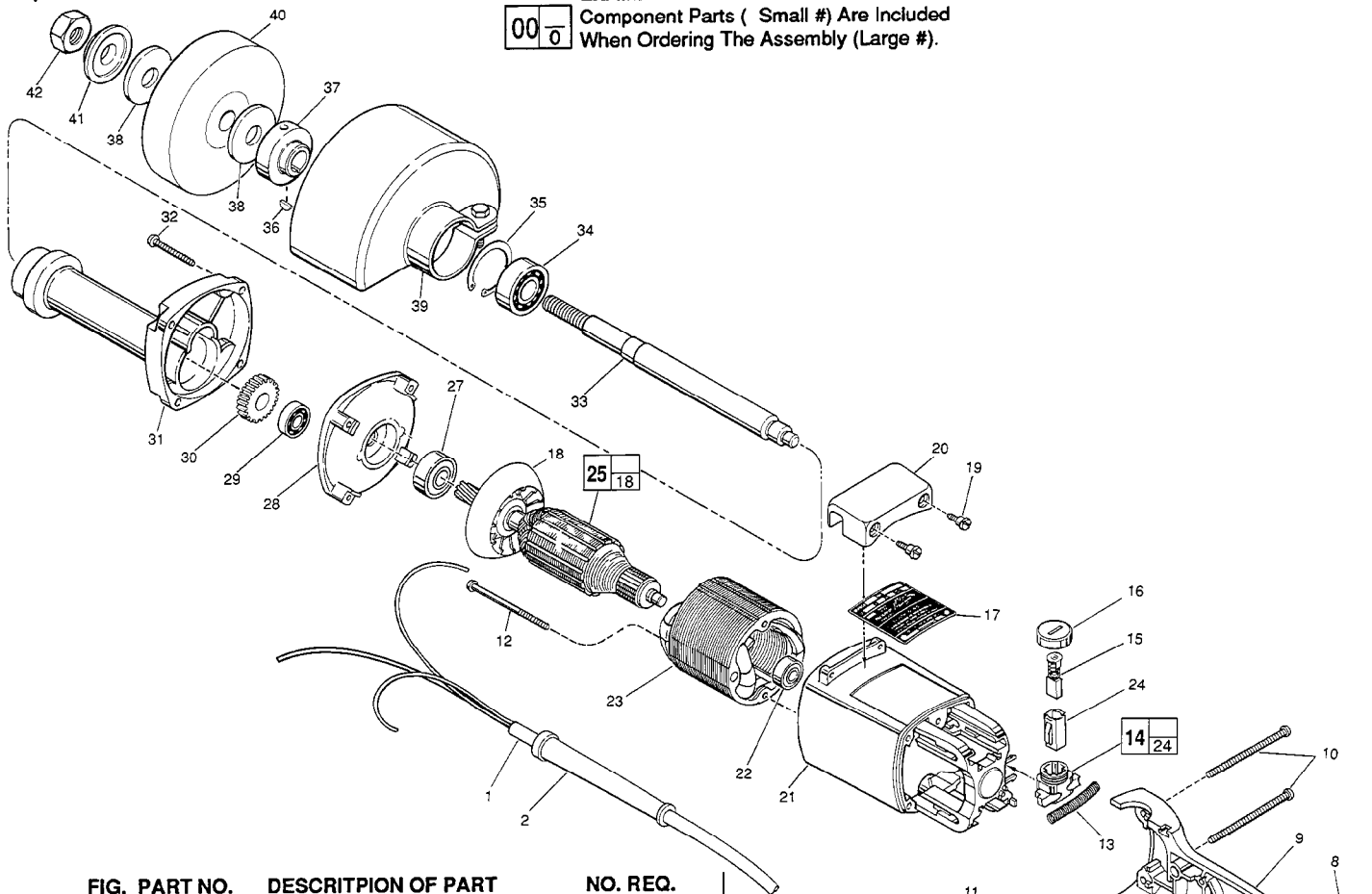


# SERVICE PARTS LIST

**BULLETIN NO.  
54-22-1192**

|  |                                 |   |                 |
|--|---------------------------------|---|-----------------|
| SPECIFY CATALOG NO. AND SERIAL NO. WHEN ORDERING PARTS |                                 | REVISED BULLETIN<br>54-22-1191          | DATE<br>July'93 |
| <b>5" STRAIGHT GRINDER</b>                             |                                 |   |                 |
| CATALOG NO. <b>5223</b>                                | STARTING SERIAL NO. <b>584A</b> | WIRING INSTRUCTION<br><b>58-01-0301</b> |                 |

**EXAMPLE:**  

 Component Parts ( Small #) Are Included  
 When Ordering The Assembly (Large #).



| FIG. | PART NO.   | DESCRIPTION OF PART               | NO. REQ. |
|------|------------|-----------------------------------|----------|
| 1    | 22-64-0121 | Cord Set                          | (1)      |
| 2    | 44-76-0050 | Cord Protector                    | (1)      |
| 3    | 31-44-1115 | Left Handle Half                  | (1)      |
| 4    | 06-55-1050 | 10-24 Hex Nut                     | (5)      |
| ★ 5  | 05-78-0305 | Switch Screw T-15                 | (4)      |
| ★ 6  | 23-66-1805 | Switch                            | (1)      |
| 7    | 06-82-7409 | 8-16 x 1/2" Pan Hd. Plast. T-20   | (1)      |
| 8    | 06-82-2568 | 10-24 x 7/8" Slit. Pan Hd. T-25   | (3)      |
| ★ 9  | 31-44-1710 | Right Handle Half                 | (1)      |
| 10   | 06-82-2598 | 10-24 x 2-3/4" Slit. Pan Hd. T-25 | (2)      |
| 11   | 42-38-0190 | Bumper                            | (1)      |
| 12   | 06-82-7375 | 8-16 x 2-1/2" Taptite T-20        | (2)      |
| 13   | 40-50-7770 | Brush Holder Spring               | (2)      |
| 14   | 22-22-1325 | Brush Holder Assembly             | (2)      |
| 15   | 22-18-0680 | Carbon Brush Assembly             | (2)      |
| 16   | 23-44-0210 | Brush Retaining Screw             | (2)      |
| ★ 17 | 12-20-0170 | Service Nameplate Kit             | (1)      |
| 18   | 22-84-0710 | Fan                               | (1)      |
| ★ 19 | 45-04-0720 | Shoulder Screw                    | (2)      |
| 20   | 31-70-0125 | Tool Rest                         | (1)      |
| ★ 21 | 31-50-0541 | Motor Housing                     | (1)      |
| 22   | 02-04-0845 | Ball Bearing                      | (1)      |
| 23   | 18-50-0135 | 120 Volt Field                    | (1)      |
| 24   | 22-20-0660 | Brush Tube                        | (2)      |
| 25   | 16-50-0135 | 120 Volt Armature                 | (1)      |
| 27   | 02-04-1515 | Ball Bearing                      | (1)      |
| 28   | 28-28-1567 | Diaphragm                         | (1)      |
| 29   | 02-04-0910 | Ball Bearing                      | (1)      |
| 30   | 32-75-3140 | Spindle Gear                      | (1)      |
| 31   | 28-50-6196 | Spindle Housing                   | (1)      |

| FIG. | PART NO.   | DESCRIPTION OF PART                    | NO. REQ. |
|------|------------|--|----------|
| 32   | 06-82-7407 | 10-14 x 1-9/16" Pan Hd. T-25           | (4)      |
| 33   | 38-50-5340 | Spindle Shaft                          | (1)      |
| 34   | 02-04-1746 | Ball Bearing                           | (1)      |
| 35   | 34-80-2960 | Internal Retaining Ring                | (1)      |
| 36   | 06-42-1200 | Woodruff Key                           | (1)      |
| 37   | 43-34-0191 | Inner Wheel Flange                     | (1)      |
| 38   | 45-88-0165 | Rubber Washer                          | (2)      |
| 39   | 49-12-0290 | Wheel Guard                            | (1)      |
| 40   | -----      | 5" Grinding Wheel(Select from Catalog) | (1)      |
| 41   | 43-34-0192 | Outer Wheel Flange                     | (1)      |
| 42   | 06-55-3250 | 5/8 - 11 Hex Nut                       | (1)      |
|      | 22-56-0456 | Terminal Block                         | (1)      |
|      | 49-96-4072 | 1-1/16" Open End Wrench                | (1)      |
|      | 49-96-6600 | Spanner Wrench                         | (1)      |

**FIG. LUBRICATION**  
 31 3/4 Oz. Type "D" Grease, No. 49-08-4110.

**MILWAUKEE ELECTRIC TOOL CORPORATION**  
 13135 W. LISBON RD., BROOKFIELD, WI 53005