



SERVICE PARTS LIST

BULLETIN NO.
55-24-0575

SPECIFY CATALOG NO. AND SERIAL NO. WHEN ORDERING PARTS		REVISED BULLETIN	DATE
30mm ROTARY HAMMER		54-40-5226	July 2000
CATALOG NO. 5303-51	STARTING SERIAL NUMBER	WIRING INSTRUCTION	
	940A	58-03-1130	

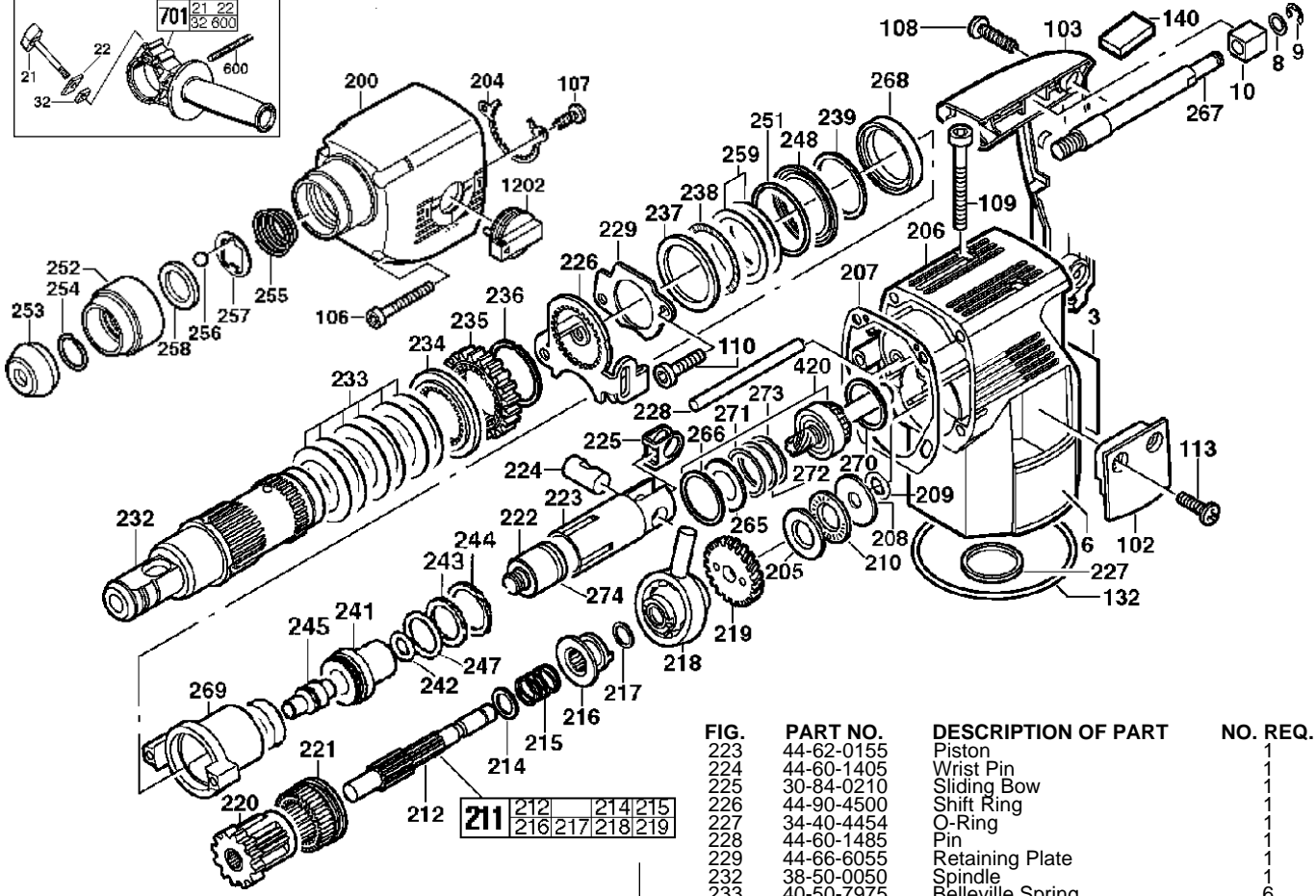
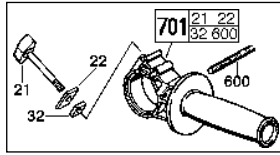


FIG.	PART NO.	DESCRIPTION OF PART	NO. REQ.
3	12-20-0406	Nameplate	1
6	10-07-6215	Product Label	2
8	45-88-1245	Washer	1
9	44-90-0340	Snap Ring (Ext.)	1
10	43-87-0080	Isolation Block	1
21	05-81-0945	Side Handle Screw	1
22	44-66-5665	Clamping Plate	1
32	44-40-0745	Nut	1
102	31-15-0255	Brush Cover	2
103	31-44-2100	Handle Set	1
106	05-74-0685	Screw	4
107	05-74-0715	Screw	2
108	05-78-0715	Screw	3
109	05-74-0695	Screw	2
110	05-74-0700	Screw	2
113	05-78-0745	Screw	4
132	34-40-0145	O-Ring	1
140	22-33-0045	Capacitor	1
200	31-40-0040	Gearcase w/ Bearing	1
204	44-86-0625	Spined Retainer	1
205	45-88-0045	Thrust Washer	1
206	31-15-0305	Crankcase w/ Bearing	1
207	43-44-0375	Gasket	1
208	45-88-8825	Washer	1
209	34-40-4440	O-ring	1
210	02-80-6025	Thrust Bearing	1
211	14-73-0245	Wobble Shaft Assembly	1
212	36-66-3160	Reduction Gear Shaft	1
214	45-88-1250	Washer	1
215	40-50-8895	Spring	1
216	45-22-0300	Coupling Sleeve	1
217	45-88-1240	Washer	1
218	36-92-0745	Wobble Plate	1
219	32-60-2620	Reduction Gear	1
220	32-60-2155	Offset Gear	1
221	32-60-2165	Internal Gear	1
222	44-82-0190	Ram	1

FIG.	PART NO.	DESCRIPTION OF PART	NO. REQ.
223	44-62-0155	Piston	1
224	44-60-1405	Wrist Pin	1
225	30-84-0210	Sliding Bow	1
226	44-90-4500	Shift Ring	1
227	34-40-4454	O-Ring	1
228	44-60-1485	Pin	1
229	44-66-6055	Retaining Plate	1
232	38-50-0050	Spindle	1
233	40-50-7975	Belleville Spring	6
234	45-88-7765	Stop Washer	1
235	32-75-1205	Spindle Gear	1
236	44-90-4510	Retaining Ring (Ext.)	1
237	45-88-1255	Washer	1
238	02-80-0150	Thrust Washer	1
239	45-88-0775	Locking Washer	1
241	44-82-0090	Ram Catcher	1
242	34-40-4451	O-Ring	1
243	42-76-0725	Thrust Collar	1
244	44-90-4415	Retaining Ring	1
245	45-56-2545	Striker	1
247	34-40-4452	O-Ring	1
248	45-88-1265	Washer	1
251	34-40-4459	O-Ring	1
252	42-76-0275	Chuck Collar	1
253	42-52-0065	Dust Cap	1
★ 254	44-90-0375	Retaining Ring	1
255	40-50-8045	Spring	1
256	02-02-0275	Ball	1
257	42-36-1755	Support Plate	1
258	44-90-4285	Holding Ring	1
259	45-88-1270	Washer	2
265	45-88-1280	Washer	1
266	45-88-0790	Locking Washer	1
267	05-77-0030	Bolt	1
268	42-40-1040	Bushing	1
269	45-60-0510	Spindle Bearing Support	1
270	44-90-0115	Ring	1
271	45-88-1285	Washer	1
272	45-88-1290	Washer	1
273	45-88-8830	Washer	1
274	34-40-4465	O-Ring	1
420	36-66-4265	Intermediate Gear Set	1
600	43-46-0170	Depth Gauge	1
701	49-15-0305	Side Handle w/Depth Rod	1
1202	44-10-0075	Shift Lever	1
	14-46-4303	Lubrication Service Kit	1

- SEE SECOND PAGE FOR SERVICE NOTES -

MILWAUKEE ELECTRIC TOOL CORPORATION

13135 W. Lisbon Road, Brookfield, WI 53005

Drwg. 3

EXAMPLE:

00	0
----	---

Component Parts (Small #)
Are Included When Ordering
The Assembly (Large #).

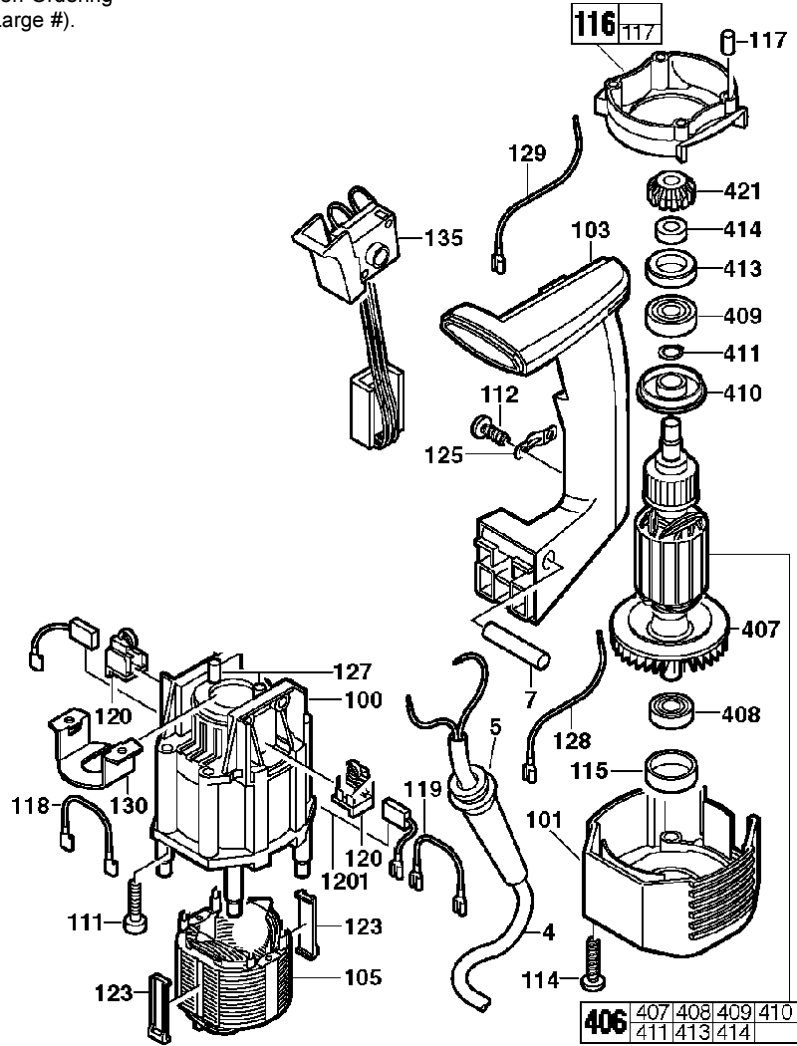


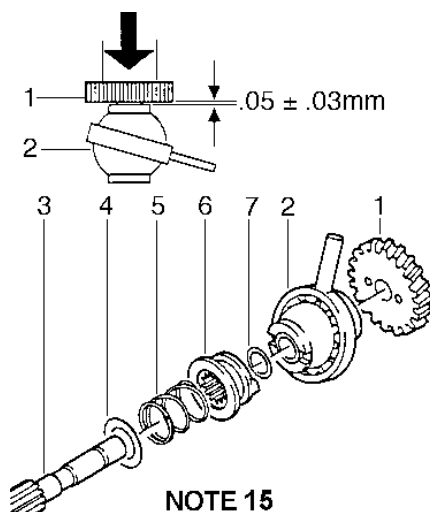
FIG.	PART NO.	DESCRIPTION OF PART	NO. REQ.
4	22-64-0905	Cord Set	1
5	44-76-0285	Strain Relief	1
7	44-60-0015	Grooved Dowel Pin	1
100	31-50-0955	Motor Housing	1
101	31-15-0440	Motor Cover	1
103	31-44-2100	Handle Set	1
105	18-07-0090	Field - Service	1
111	05-74-0705	Screw	4
112	05-78-0720	Screw	2
114	05-78-0725	Screw	4
115	42-96-0170	Bearing Cup	1
116	31-05-0220	Air Deflector Ring	1
117	45-30-0210	Vinyl Slug	4
118	23-94-1025	Wire	1
119	23-94-1025	Wire	1
120	22-20-0230	Brush Holder	2
123	42-70-1100	Field Centering Clip	2
125	31-17-0240	Cord Clamp	1
127	45-30-0220	Slug	2
128	23-94-1026	Wire	1
129	23-94-1027	Wire	1
130	42-92-0015	Bearing Cover	1
135	23-66-0045	Switch	1
406	16-07-0085	Armature - Service	1
407	22-84-0940	Fan	1
408	02-04-1800	Ball Bearing	1
409	02-04-1795	Ball Bearing	1
410	43-06-0135	Insulating Disc	1
411	44-90-4405	Retaining Ring	1
413	45-22-0465	Sleeve	1
414	45-36-1595	Spacer	1
421	32-60-2645	Armature Pinion Gear	1
1201	22-18-0980	Brush (2) Service Kit	1

SERVICE NOTES:

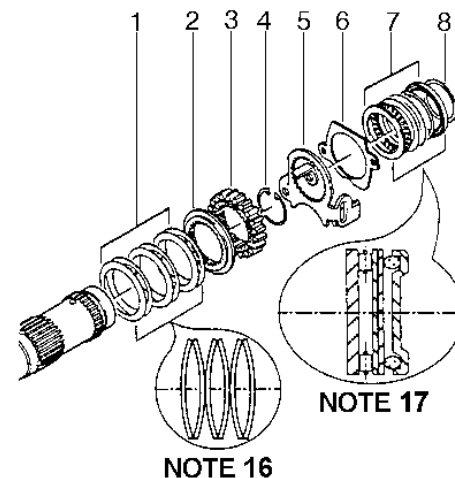
5303-51

1. For any service that requires access into the gearcase, the shift lever must be removed. To remove, shift to the hammer and drill mode and insert a screwdriver under the lever end and pry up. The lever will be destroyed and must be replaced.
2. To remove the spindle, the two mounting bolts (110) must be removed with a metric allen wrench.
3. To remove the ram, tap the end of the striker with a hammer, this frees the ram from the ram catcher.
4. To remove the ram catcher, striker and striker support from the spindle, remove the internal retaining ring with a small screwdriver by pushing on the ring through the two small ports in the spindle where the ring is visible. Push the ring in and towards the open end of the spindle. Press out all internal parts.
5. To remove the rear thrust bearing, remove the spiral lock retaining ring with a screwdriver and then remove the thrust bearing.
6. To remove the spindle gear/clutch, press the spindle gear against the disk springs and remove the retaining ring that fits into the gear counter bore. Once this retaining ring is removed, all of the parts will slip off of the spindle.
7. To remove the wobble shaft, turn the shaft so the wobble finger leans toward the motor housing. Pull out on the shaft, tilt and wiggle it to get it to clear the crankcase.
8. To disassemble the wobble shaft, remove the retaining ring by the drive gear. Press the drive gear off, remove all remaining parts.
9. To remove the bearing housing (269), try turning it by twisting on the lugs by hand. If it can be moved, continue to twist and pull to remove. If it will not move, it must be removed with an internal bearing puller.
10. When removing the intermediate shaft, note the number of shim washers that are between the snap ring and the bearing. Be sure to return them all when reassembling the tool.
11. To remove the handle, push out dowel pin (7), open handle, remove snap ring and washer from anti-vibration rubber mount, disconnect field leads under motor cover and remove handle.
12. To remove motor, remove two screws from the top of the crankcase and four screws (111) from deep pockets in motor housing (100). Slide motor and motor housing out of crankcase.
13. To remove armature from motor assembly, pull brushes off of commutator, slide bearing cover (130) from under bearing, slide armature out.
14. When reassembling bearing housing (269) to crankcase do not press it completely into place before the piston and wobble shaft are in place.

15. When reassembling the wobble shaft, a clearance of .02 to .08mm must be maintained between the drive gear and the inner race of the wobble plate. The ground side of the gear must face the wobble plate.



16. When reassembling the clutch be sure to stack the disk springs as shown.



17. Thrust bearing on spindle must be assembled as shown.

18. To push the internal retaining ring into the spindle that retains the striker, striker support and ram catcher, use an old, used piston. The position of the ring can be visually checked by looking in the removal ports.

Item number	Torque (Nm)	Description		Thread Locking Sealant
109	2.5	Motor/armature bolts	(2)	None
111	2.5	Motor housing bolts	(4)	None
112	1	Strain relief screws	(2)	None
267	10	Bolt	(1)	None
108	1.2	Handle screws	(3)	None
114	1.8	Motor cover screws	(4)	None
110	6	Spindle retaining bolts	(2)	Blue
106	2.5-3.0	Gearcase screws	(4)	None