



# SERVICE PARTS LIST

**BUL. 54-24-3550**

## ROTARY HAMMER

REVISED BUL. DATE  
May '75

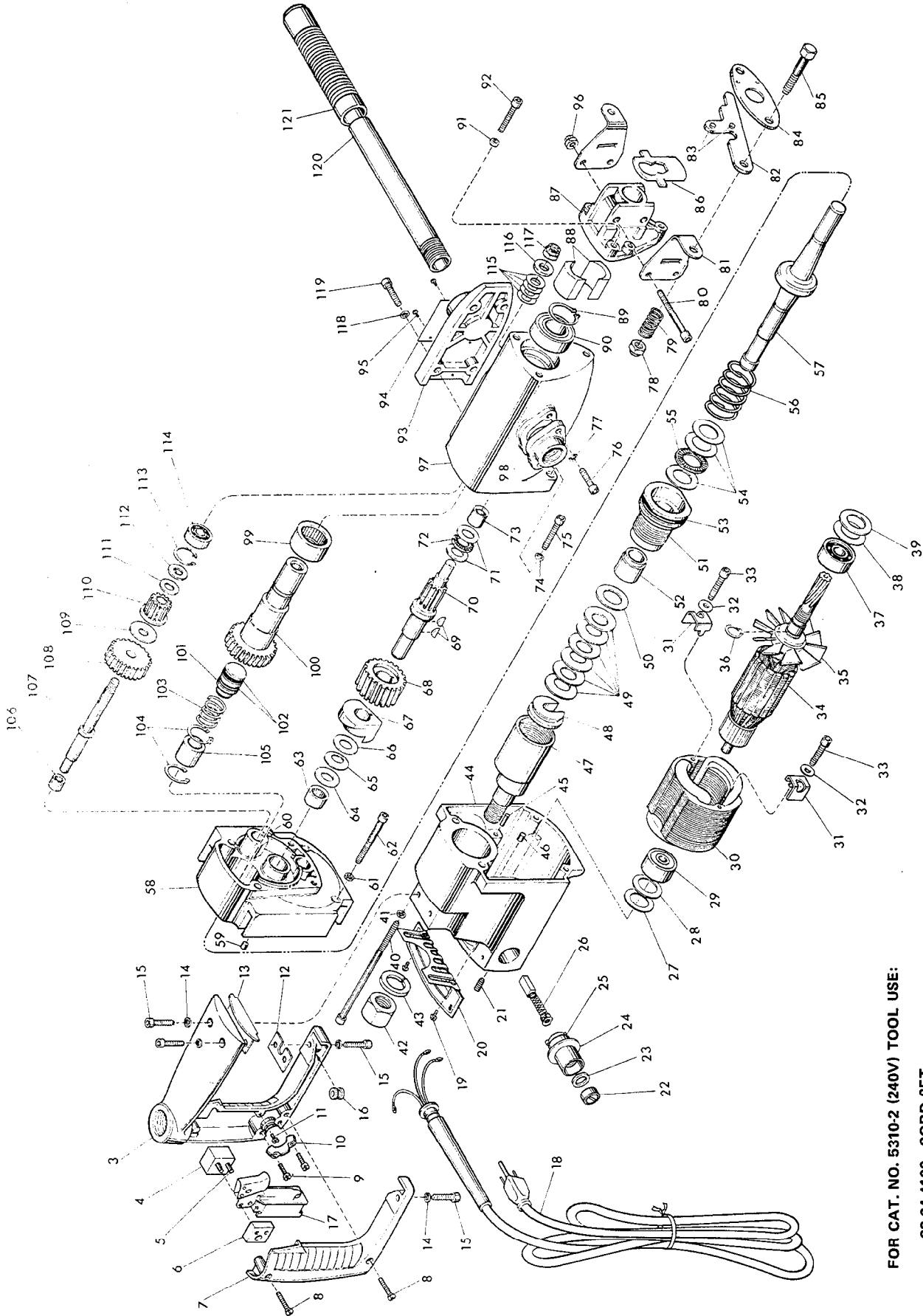
**Catalog No. 5310**

Starting Serial No. **518-1001**

WIRING INSTRUCTIONS  
**58-01-0510**

Specify Catalog and Serial No. when ordering parts

FIG.	PART NO.	DESCRIPTION OF PART	NO. REQ.	FIG.	PART NO.	DESCRIPTION OF PART	NO. REQ.
1	14-34-0142	Handle Assembly (Fig. Nos. 2 thru 13)	(1)	63	02-50-4020	Needle Bearing	(1)
2	28-44-1174	Handle Assembly (Fig. Nos. 3 thru 6)	(1)	64	45-88-5390	Flat Washer	(1)
3	28-44-1173	Handle	(1)	65	45-88-0645	Spring Washer	(1)
4	44-52-0090	Switch Mounting Pad	(1)	66	45-88-5395	Flat Washer	(1)
5	06-65-1575	5/32x7/8 Roll Pin	(2)	67	42-50-0071	Cam	(1)
6	44-52-0100	Switch Mounting Pad	(1)	68	32-42-1310	First Intermediate Gear	(1)
7	28-20-3572	Handle Cover	(1)	69	06-42-1200	Woodruff Key	(2)
8	06-81-3700	8-32x7/8 Oval Hd. Screw	(2)	70	36-10-0710	Cam Shaft	(1)
9	06-81-6150	8-32x1/2 Fil. Hd. Sem	(2)	71	45-88-0615	Thrust Race	(2)
10	28-17-0400	Clamp Strap	(1)	72	02-80-6021	Thrust Bearing	(1)
11	06-81-8625	6-32x1/4 Ground Screw	(1)	73	02-50-2445	Needle Bearing	(1)
12	43-44-0200	Gasket	(1)	74	06-97-4050	1/4 Lock Washer	(2)
13	43-44-0190	Front Handle Gasket	(1)	75	06-75-3175	1/4-20x1-1/8 Skt. Hd. Screw	(2)
14	06-97-4050	1/4 Lock Washer	(4)	76	06-75-3050	1/4-20x3/4 Skt. Hd. Screw	(2)
15	06-75-3050	1/4-20x3/4 Skt. Hd. Screw	(4)	77	06-97-4050	1/4 Lock Washer	(2)
16	22-90-0050	Grommet	(1)	78	06-57-5150	3/8-16 Lock Nut	(2)
17	23-66-0490	Switch	(1)	79	40-50-6402	Tool Retaining Spring	(2)
18	22-64-0090	Cord Set	(1)	80	06-75-3350	1/4-20x2 Skt. Hd. Screw	(2)
19	06-81-8650	6-32x1/4 Rd. Hd. Sem	(4)	81	42-36-0750	Tool Retainer Bracket	(2)
20	12-98-6560	Nameplate	(1)	82	44-86-0161	Tool Retainer Assembly (Includes Fig. No. 83)	(1)
21	06-83-2670	1/4-20x1/2 Knrl. Set Screw	(2)	83	06-92-0300	6x3/16 Stud	(2)
22	23-44-0100	Brush Retaining Screw	(2)	84	44-66-0531	Tool Retainer Plate	(1)
23	43-44-0180	Brush Cap Gasket	(2)	85	06-75-0600	3/8-16x1-3/4 Hex. Hd. Screw	(2)
24	23-86-0075	Insulating Washer	(2)	86	44-66-0580	Adapter Plate	(1)
25	22-22-0210	Brush Holder Assembly	(2)	87	30-16-6055	Nose Cap	(1)
26	22-18-0330	Carbon Brush Assembly	(2)	88	45-06-0201	Felt Spindle Seal (Two Halves)	(1)
27	45-88-0490	Commutator End Washer (Neoprene)	(1)	89	34-60-1875	Retaining Ring	(1)
28	45-88-5402	Flat Washer (Steel)	(1)	90	02-04-2535	Ball Bearing	(1)
29	02-04-0970	Ball Bearing	(1)	91	06-97-4050	1/4 Lock Washer	(3)
30	18-62-1100	115 Volt Field	(1)	92	06-75-3175	1/4-20x1-1/8 Skt. Hd. Screw	(3)
31	42-68-0360	Field Mounting Clamp	(2)	93	28-20-1103	Gear Case Cover (Includes Fig. Nos. 94 & 95)	(1)
32	45-88-5220	Flat Washer	(2)	94	12-98-6515	Instruction Plate	(1)
33	06-75-3175	1/4-20x1-1/8 Skt. Hd. Screw	(2)	95	06-81-8200	4-36x3/16 Rd. Hd. Sem	(2)
34	16-62-1130	115 Volt Armature (Include Fig. Nos. 35 & 36)	(1)	96	06-57-5000	1/4-20 Lock Nut	(2)
35	22-84-0360	L.H. Fan Assembly	(1)	97	28-14-1170	Gear Case	(1)
36	34-60-1400	Snap Ring	(1)	98	28-02-0321	Side Handle Adapter	(1)
37	02-04-1640	Ball Bearing	(1)	99	02-50-7810	Needle Bearing	(1)
38	45-88-5405	Flat Washer (Steel)	(1)	100	32-75-2630	Spindle Gear	(1)
39	45-88-0500	Pinion End Washer (Neoprene)	(1)	101	45-06-0121	Spindle Seal	(1)
40	06-75-3620	1/4-20x4-1/2 Skt. Hd. Screw	(2)	102	34-40-1120	O-Ring	(2)
41	06-97-4050	1/4 Lock Washer	(2)	103	40-50-6403	Spindle Seal Spring	(1)
42	06-55-3700	3/4-16 Hex Nut	(1)	104	34-80-1000	Retaining Ring	(2)
43	06-97-4350	13/16 Lock Washer	(1)	105	42-40-0370	Spindle Gear Bushing	(1)
44	28-50-6071	Motor Housing (Includes Fig. Nos. 45 & 46)	(1)	106	02-50-2425	Needle Bearing	(1)
45	06-65-0630	3/16x1/2 Drivlok Pin	(1)	107	36-14-0051	Clutch Shaft	(1)
46	45-30-0110	Ball Bearing Retaining Slug	(1)	108	32-44-1301	Intermediate Gear	(1)
47	45-58-0180	Spring Housing Stud	(1)	109	45-88-0470	Clutch Washer	(1)
48	44-86-0151	Ram Retainer	(1)	110	32-60-1030	Pinion Gear	(1)
49	40-50-6100	Ram Disc Spring	(6)	111	45-88-0480	Clutch Washer	(1)
50	45-88-5415	Flat Washer	(1)	112	45-88-5250	Flat Keyed Washer	(1)
51	43-76-0202	Spring Housing Assembly (Includes Fig. No. 52)	(1)	113	34-80-1510	Retaining Ring	(1)
52	42-40-0272	Bushing	(1)	114	02-04-1015	Ball Bearing	(1)
53	34-40-2200	O-Ring	(1)	115	40-50-6200	Clutch Disc Spring	(4)
54	45-88-5417	Flat Washer	(3)	116	45-88-5255	Flat Washer	(1)
55	02-80-1700	Thrust Bearing	(1)	117	06-57-5200	3/8-24 L.H. Lock Nut	(1)
56	40-50-6000	Ram Spring	(1)	118	06-97-4050	1/4 Lock Washer	(4)
57	44-82-0061	Ram	(1)	119	06-75-3050	1/4-20x3/4 Skt. Hd. Screw	(4)
58	28-28-1401	Diaphragm (Incl. Fig. Nos. 59 & 60)	(1)	120	43-62-0230	Pipe Handle	(1)
59	45-30-0110	Ball Bearing Retaining Slug	(1)	121	43-62-0242	Handle	(1)
60	06-65-0630	3/16x1/2 Drivlok Pin	(1)	122	06-97-1700	Lock Washer (For Switch)	(4)
61	06-97-4050	1/4 Lock Washer	(2)	123	45-96-0080	Clutch Adjusting Wrench (Not Shown)	(1)
62	06-75-3350	1/4-20x2 Skt. Hd. Screw	(2)	124	12-98-7081	Caution Plate (Not Shown)	(1)
				125	49-96-0085	3/16 Socket Wrench (Not Shown)	(1)



FOR CAT. NO. 5310-2 (240V) TOOL USE:  
 22-64-4100 CORD SET  
 18-66-1100 FIELD  
 16-66-1130 ARMATURE