



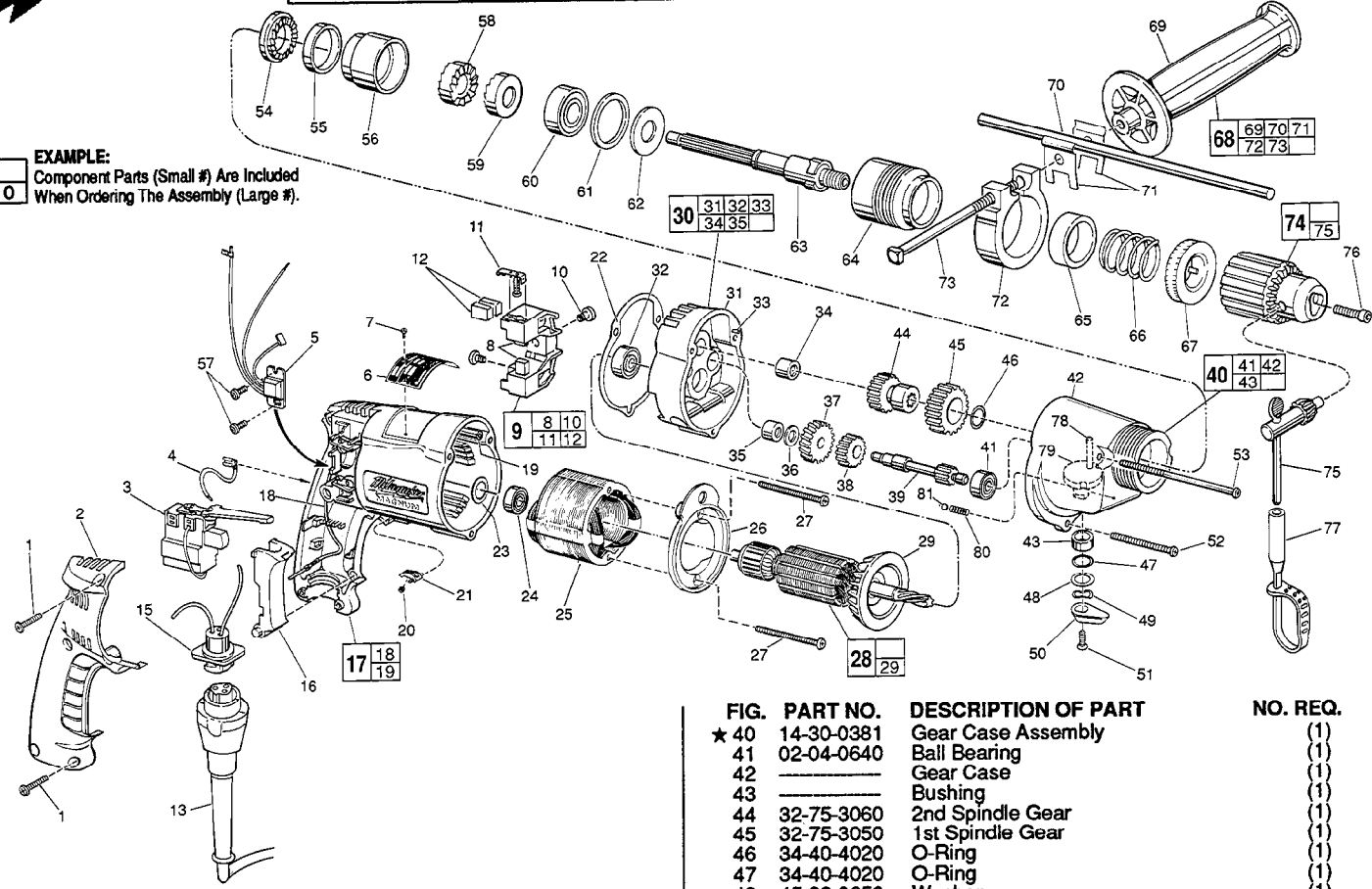
# SERVICE PARTS LIST

**BULLETIN NO.**  
**54-24-0113**

|  |                                |   |                 |
|--|--------------------------------|---|-----------------|
| SPECIFY CATALOG NO. AND SERIAL NO. WHEN ORDERING PARTS |                                | REVISED BULLETIN<br>54-24-0112          | DATE<br>May '92 |
| <b>MAGNUM TWO-SPEED HAMMER DRILL</b>                   |                                |   |                 |
| CATALOG NO. 5370-1                                     | STARTING SERIAL NO. 672-217556 | WIRING INSTRUCTION<br><b>58-01-0074</b> |                 |

**EXAMPLE:**  
Component Parts (Small #) Are Included  
When Ordering The Assembly (Large #).

|    |   |
|----|---|
| 00 | 0 |
|----|---|



| FIG. | PART NO.   | DESCRIPTION OF PART               | NO. REQ. |
|------|------------|-----------------------------------|----------|
| ★ 1  | 06-82-7266 | 7-18x1 1/16" Plastite T-20        | (5)      |
| 2    | 31-15-0101 | Handle Cover                      | (1)      |
| 3    | 23-66-1665 | Trigger Speed Control Rev. Switch | (1)      |
| 4    | 23-94-9635 | 2-1/4" Lead Assembly              | (1)      |
| 5    | 14-20-0245 | Remote Electronic Assembly        | (1)      |
| 6    | 12-99-0225 | Nameplate Blank                   | (1)      |
| 7    | 06-85-0200 | Nameplate Screw                   | (2)      |
| 8    | 22-16-0300 | Carbon Brush                      | (2)      |
| 9    | 22-22-0355 | Brush Holder Assembly             | (1)      |
| ★ 10 | 31-75-0040 | Brush Holder Screw                | (2)      |
| ★ 11 | 22-20-0355 | Brush Spring Assembly             | (2)      |
| 12   | 22-16-0300 | Carbon Brush (Spares)             | (2)      |
| ★ 13 | 48-76-4008 | 8 Foot Quik-Lok Cord Set          | (1)      |
| 15   | 22-56-0302 | Pin Housing Assembly              | (1)      |
| 16   | 45-72-0080 | Trigger                           | (1)      |
| ★ 17 | 14-38-0357 | Motor Housing Assembly            | (1)      |
| 18   | 23-94-9686 | Ground Wire Assembly              | (1)      |
| 19   | 44-60-0570 | Grounding Pin                     | (1)      |
| 20   | 40-50-0085 | Lock Button Spring                | (1)      |
| 21   | 42-42-0150 | Lock Button                       | (1)      |
| 22   | 43-44-0576 | Gasket                            | (1)      |
| 23   | 45-88-7800 | Gasket Washer                     | (1)      |
| 24   | 02-04-0645 | Ball Bearing                      | (1)      |
| ★ 25 | 18-10-0055 | 120 Volt Field                    | (1)      |
| 26   | 31-05-0065 | Baffle                            | (1)      |
| 27   | 06-82-7380 | 7-18 x 1 7/8" Pan Hd. Screw T-20  | (2)      |
| 28   | 16-10-0500 | 120 Volt Armature                 | (1)      |
| 29   | 22-84-0650 | Fan Assembly                      | (1)      |
| ★ 30 | 14-13-0460 | Diaphragm Assembly                | (1)      |
| ★ 31 | 28-28-2010 | Diaphragm                         | (1)      |
| 32   | 02-04-0847 | Ball Bearing                      | (1)      |
| 33   | 06-65-0825 | 1/8 x 1/2" Groove Pin             | (1)      |
| 34   | 02-50-2020 | Needle Bearing                    | (1)      |
| 35   | 02-50-1620 | Needle Bearing                    | (1)      |
| 36   | 45-88-7721 | Thrust Washer (Heat Treated)      | (1)      |
| 37   | 32-40-1815 | Intermediate Gear                 | (1)      |
| 38   | 32-44-1320 | 2nd Intermediate Pinion           | (1)      |
| 39   | 36-66-1330 | 1st Intermediate Pinion           | (1)      |

| FIG. | PART NO.   | DESCRIPTION OF PART                     | NO. REQ. |
|------|------------|---|----------|
| ★ 40 | 14-30-0381 | Gear Case Assembly                      | (1)      |
| 41   | 02-04-0640 | Ball Bearing                            | (1)      |
| 42   | -----      | Gear Case                               | (1)      |
| 43   | -----      | Bushing                                 | (1)      |
| 44   | 32-75-3060 | 2nd Spindle Gear                        | (1)      |
| 45   | 32-75-3050 | 1st Spindle Gear                        | (1)      |
| 46   | 34-40-4020 | O-Ring                                  | (1)      |
| 47   | 34-40-4020 | O-Ring                                  | (1)      |
| 48   | 45-88-0250 | Washer                                  | (1)      |
| 49   | 45-88-7780 | Spring Washer                           | (1)      |
| 50   | 43-98-0220 | Shift Knob                              | (1)      |
| 51   | 06-81-2502 | 6-32x3/8" Flat Hd. Phil. Screw          | (1)      |
| ★ 52 | 06-82-7393 | 7-18 x 2" Pan Hd. Screw T-20            | (2)      |
| ★ 53 | 06-82-7524 | 7-18 x 3-1/2" Pan Hd. Screw T-20        | (1)      |
| 54   | 44-84-0120 | Fixed Ratchet                           | (1)      |
| 55   | 45-36-1120 | Bearing Housing Spacer                  | (1)      |
| 56   | 42-52-0250 | Bearing Housing                         | (1)      |
| 57   | 06-82-7212 | 4-20x1/4" Pan Hd. Plastite T-10         | (2)      |
| 58   | 44-84-0150 | Intermediate Ratchet                    | (1)      |
| 59   | 44-84-0145 | Rotating Ratchet                        | (1)      |
| 60   | 02-04-1536 | Ball Bearing                            | (1)      |
| 61   | 45-88-7350 | Bearing Retainer Washer                 | (1)      |
| 62   | 45-88-7365 | Spring Support Washer                   | (1)      |
| 63   | 38-50-5295 | Spindle                                 | (1)      |
| 64   | 45-22-0405 | Sleeve (Left Hand Thread)               | (1)      |
| 65   | 45-88-7375 | Felt Washer                             | (1)      |
| 66   | 40-50-4950 | Spring                                  | (1)      |
| 67   | 42-76-0200 | Locking Collar                          | (1)      |
| 68   | 14-34-0250 | Side Handle Assembly                    | (1)      |
| 69   | 43-62-0865 | Side Handle                             | (1)      |
| 70   | 44-94-0161 | Depth Rod                               | (1)      |
| 71   | 42-68-0390 | Depth Gauge Clamp                       | (2)      |
| ★ 72 | 25-82-0140 | Clamping Collar                         | (1)      |
| 73   | 42-32-0161 | 5/16 - 18 x 3-1/2" Square Hd. Bolt      | (1)      |
| 74   | 48-66-1365 | 1/2" Reversing Chuck                    | (1)      |
| 75   | 48-66-3280 | Chuck Key                               | (1)      |
| 76   | 06-75-3150 | 1/4-20x1" Socket Hd. Screw - L.H.Thread | (1)      |
| 77   | 48-66-4040 | Key Holder                              | (1)      |
| 78   | 44-60-0615 | Dowel Pin                               | (1)      |
| 79   | 42-50-0105 | Shift Cam                               | (1)      |
| 80   | 40-50-7760 | Compression Spring                      | (1)      |
| 81   | 02-02-0120 | 1/8" Steel Ball                         | (1)      |
|      | 10-98-6070 | Caution Label                           | (1)      |
|      | 10-98-5986 | Caution Label (Omit for Canadian Tools) | (1)      |

**FIG. LUBRICATION**  
40 2 Oz. Type "E" Grease, No. 49-08-4122.  
**MILWAUKEE ELECTRIC TOOL CORPORATION**  
13135 W. LISBON RD., BROOKFIELD, WI 53005