



# SERVICE PARTS LIST

**BULLETIN NO.**  
54-24-1553

SPECIFY CATALOG NO. AND SERIAL NO. WHEN ORDERING PARTS		REVISED BULLETIN 54-24-1552	DATE April '85
<b>TRIGGER SPEED CONTROL HAMMER DRILL</b>		WIRING INSTRUCTION <b>58-01-0648</b>	
<b>CATALOG NO. 5392</b>	<b>STARTING SERIAL NO. 456-103000</b>		
CAT. NO. 5392-6	START SER. NO. 456-103000	BILINGUAL LABEL 10-98-6400	

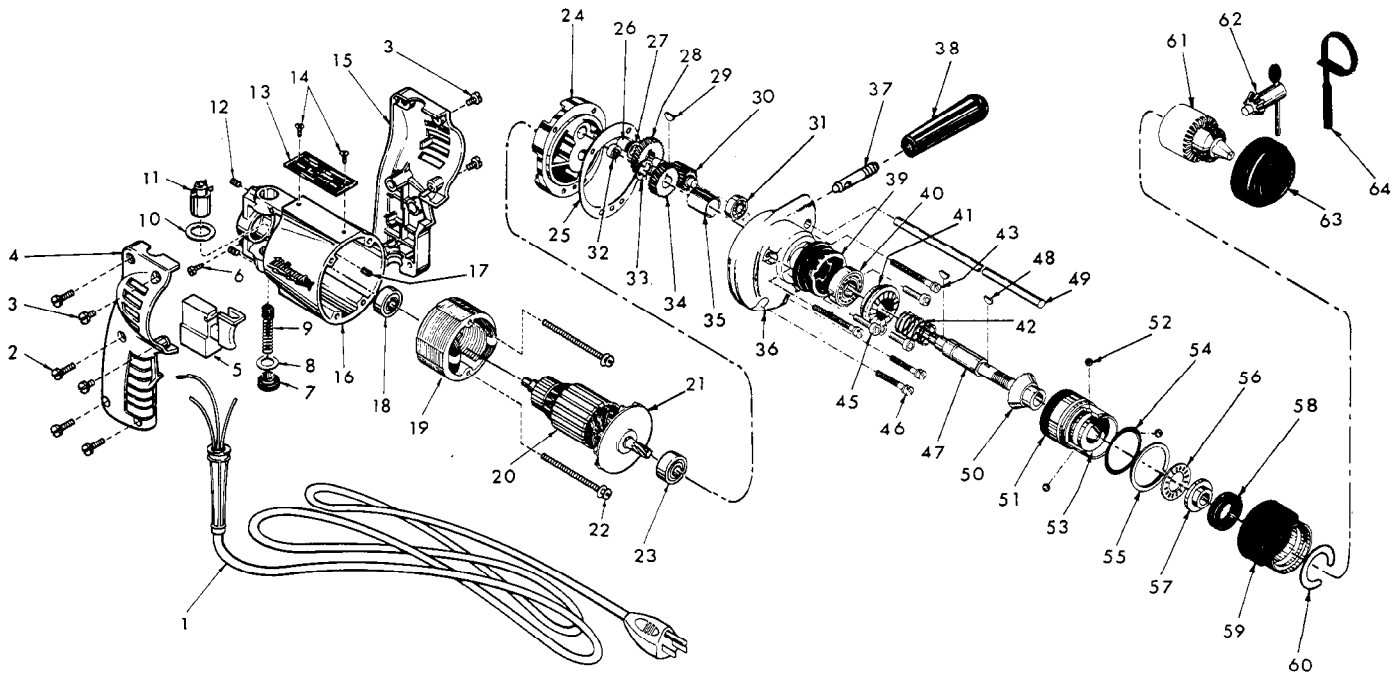


FIG.	PART NO.	DESCRIPTION OF PART	NO. REQ.	FIG.	PART NO.	DESCRIPTION OF PART	NO. REQ.
	1	Cord Set	(1)	34	32-75-2711	Spindle Gear	(1)
★	2	8-18x3/4 Thread Form Screw	(4)	35	45-36-0611	Spindle Spacer	(1)
★	3	8-32 x 3/8 Taptite Screw	(4)	36	28-14-1322	Gear Case Assembly	(1)
★	4	R. H. Handle Half	(1)	37	45-58-0220	Clamping Stud	(1)
	5	Switch	(1)	38	43-62-0465	Handle	(1)
	6	6-32x1/4 Ground Screw	(1)	39	31-86-0111	Spacer	(1)
	7	Brush Retaining Screw	(2)	40	02-08-0510	Ball Bearing	(1)
	8	Washer	(2)	41	44-84-0071	Fixed Ratchet	(1)
	9	Carbon Brush Assembly	(2)	42	40-50-7680	Ratchet Spring	(1)
	10	Washer	(2)	43	06-81-6740	8-32x2 Fil. Hd. Sem	(2)
	11	Brush Holder Assembly	(2)	44			
	12	10-32x1/4 Hdis. Skt. Screw	(2)	45	06-75-2060	8-32x5/8 Soc. Hd. Cap Screw	(3)
★	13	Nameplate	(1)	46	06-81-1006	8-32x1-3/8 Fil. Hd. Sem	(2)
	14	6x1/4 Rd. Hd. Type Z Screw	(2)	47	38-50-5013	Spindle	(1)
★	15	L. H. Handle Half	(1)	48	06-42-0800	Woodruff Key	(2)
★	16	Motor Housing (Includes Fig. 17)	(1)	49	44-94-0161	Depth Rod	(1)
	17	Ball Brg. Retaining Slug	(1)	50	44-84-0066	Rotating Ratchet	(1)
	18	Ball Bearing	(1)	51	45-22-0281	Sleeve	(1)
★	19	120 V. Field	(1)	52	02-02-0180	3/16 Inch Steel Ball	(3)
★	20	120 V. Armature (Includes Fig. 21)	(1)	53	45-36-0592	Shift Spacer	(1)
	21	Fan Assembly	(1)	54	34-40-1500	O-Ring	(1)
★	22	6-32x1-7/8 Pan Hd. Sem	(2)	55	34-60-2125	Retaining Ring	(1)
	23	Ball Bearing	(1)	56	02-80-1200	Thrust Bearing	(1)
	24	Diaphragm	(1)	57	45-36-0621	Thrust Spacer	(1)
	25	Gasket	(1)	58	45-06-0160	Felt Seal	(1)
	26	Needle Bearing	(1)	59	42-76-0181	Shift Collar Assembly	(1)
	27	Thrust Washer	(1)	60	44-86-0190	Retainer	(1)
	28	Intermediate Gear	(1)	61	48-66-0810	3/8" Chuck—3/8-24 Thread (Includes Fig. 62)	(1)
	29	Woodruff Key	(1)	62	48-66-3240	Chuck Key	(1)
	30	Intermediate Pinion Shaft	(1)	63	49-62-0090	Hammer Dust Shield	(1)
	31	Ball Bearing	(1)	64	48-66-4040	Key Holder	(1)
	32	Needle Bearing	(1)	★ 65	10-98-5987	Caution Label (Not Shown) Omit For Canadian Tools	(1)
	33	Retaining Ring	(1)				