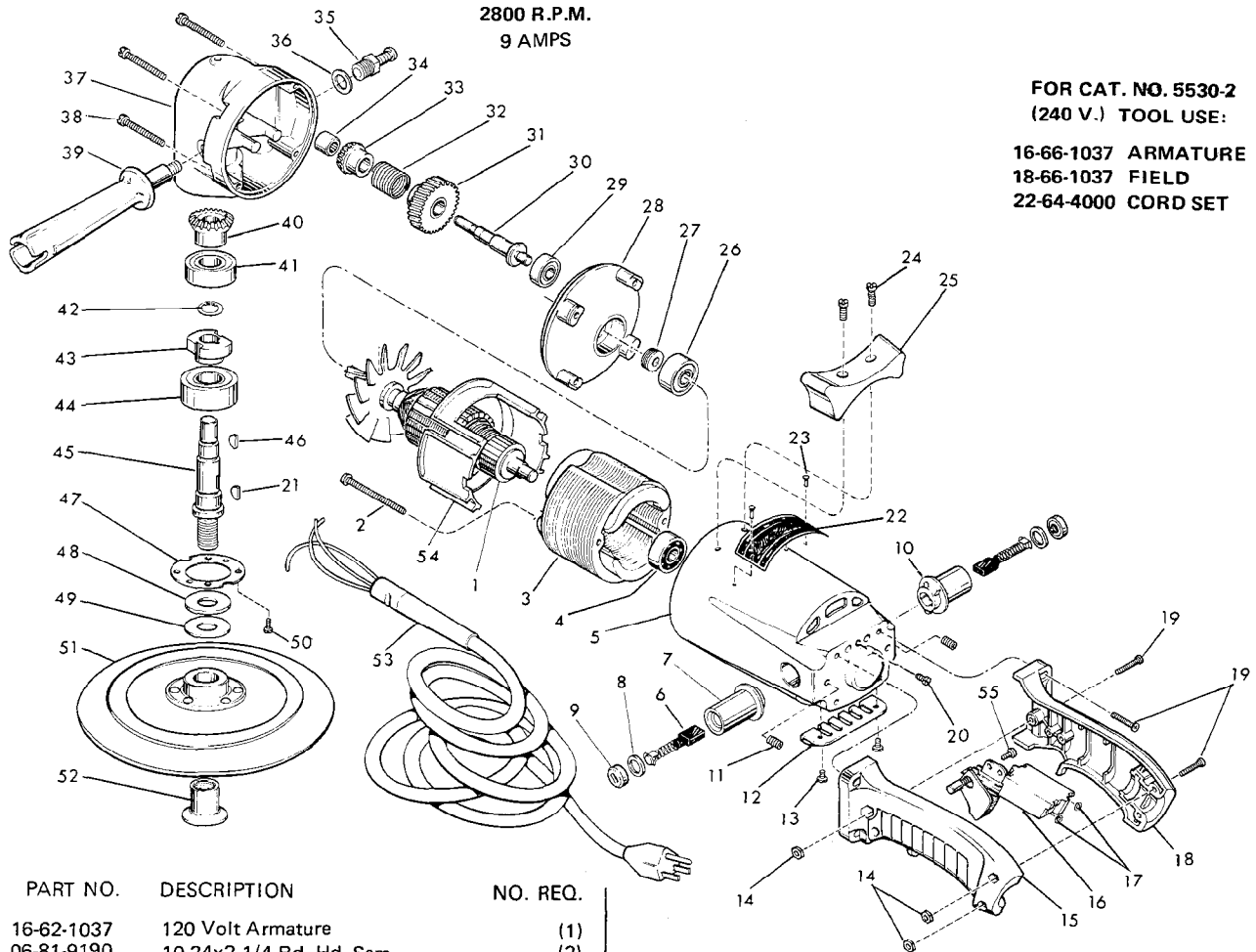




SERVICE PARTS LIST

BULLETIN NO.
54-32-1106

| | | | |
|--|--------------------------------------|---|------------------|
| SPECIFY CATALOG NO. AND SERIAL NO. WHEN ORDERING PARTS | | REVISED BULLETIN 54-32-1105 | DATE Nov. '82 |
| 7" POLISHER | | WIRING INSTRUCTION 58-01-0506 | |
| CATALOG NO. 5530 | STARTING SERIAL NO. 140-16000 | | |



FOR CAT. NO. 5530-2
(240 V.) TOOL USE:

16-66-1037 ARMATURE
18-66-1037 FIELD
22-64-4000 CORD SET

| FIG. | PART NO. | DESCRIPTION | NO. REQ. |
|------|----------|---|----------|
| | 1 | 16-62-1037 120 Volt Armature | (1) |
| ★ | 2 | 06-81-9190 10-24x2-1/4 Rd. Hd. Sem. | (2) |
| | 3 | 18-62-1037 120 Volt Field | (1) |
| | 4 | 02-04-0970 Ball Bearing | (1) |
| ★ | 5 | 28-50-5102 Motor Housing | (1) |
| | 6 | 22-18-0175 Carbon Brush | (2) |
| | 7 | 22-22-1231 Brush Holder | (2) |
| | 8 | 43-44-0180 Brush Cap Gasket | (2) |
| | 9 | 23-44-0100 Brush Retaining Screw | (2) |
| | 10 | 23-86-0075 Insulating Washer | (2) |
| | 11 | 06-83-2000 10-24x1/4 Set Screw | (2) |
| | 12 | 44-66-0230 Commutator Cover Plate | (1) |
| | 13 | 06-81-8650 6-32x1/4 Rd. Hd. Sem | (2) |
| | 14 | 06-55-1000 10-24 Hex Nut | (3) |
| | 15 | 31-44-0590 Handle Half Left | (1) |
| | 16 | 23-66-0165 Switch (16 Amp) | (1) |
| | 17 | 06-97-1800 Lockwasher | (4) |
| | 18 | 31-44-0580 Handle Half Right | (1) |
| | 19 | 06-81-4207 10-24x7/8 Phillips Pan Hd. Screw | (7) |
| ★ | 20 | 06-81-8820 Ground Screw | (1) |
| | 21 | 06-42-1600 Woodruff Key | (1) |
| | 22 | 12-99-0032 Nameplate Blank | (1) |
| | 23 | 06-85-0200 Nameplate Screw | (2) |
| | 24 | 06-81-6950 10-24x1/2 Fil. Hd. Sem | (2) |
| | 25 | 28-79-0321 Tool Rest | (1) |
| | 26 | 02-04-1260 Ball Bearing | (1) |
| | 27 | 45-28-0060 Grease Slinger | (1) |
| | 28 | 28-28-0981 Diaphragm | (1) |
| | 29 | 02-04-0910 Ball Bearing | (1) |

| FIG. | PART NO. | DESCRIPTION | NO. REQ. |
|------|----------|---|----------|
| | 30 | 36-66-3251 Intermediate Shaft | (1) |
| | 31 | 32-40-1311 Intermediate Gear | (1) |
| | 32 | 40-50-3100 Drive Spring | (1) |
| | 33 | 32-05-1101 Bevel Gear | (1) |
| | 34 | 02-50-1630 Needle Bearing | (1) |
| | 35 | 44-20-0060 Spindle Lock Assembly | (1) |
| | 36 | 45-88-5320 Flat Washer | (1) |
| | 37 | 28-14-1082 Gear Case | (1) |
| | 38 | 06-81-7300 10-24x1-3/4 Fil. Hd. Sem | (4) |
| | 39 | 43-62-0570 Side Handle | (1) |
| | 40 | 32-05-1081 Bevel Gear | (1) |
| | 41 | 02-04-1710 Ball Bearing | (1) |
| | 42 | 34-60-1290 Retaining Ring | (1) |
| ★ | 43 | 42-74-0070 Spindle Lock Cog | (1) |
| | 44 | 02-04-2065 Ball Bearing | (1) |
| | 45 | 38-50-3751 Spindle | (1) |
| | 46 | 06-42-1200 Woodruff Key | (1) |
| | 47 | 45-88-0220 Spindle Retaining Washer | (1) |
| | 48 | 45-88-0141 Hub Thrust Washer | (1) |
| | 49 | 45-88-0160 Spindle Rubber Washer | (1) |
| | 50 | 06-81-6050 8-32x5/16 Fil. Hd. Sem | (6) |
| | 51 | 49-36-2500 7" Rubber Backing Pad | (1) |
| ★ | 52 | 49-40-0390 Disc Nut | (1) |
| | 53 | 22-64-0080 Cord Set | (1) |
| | 54 | 31-05-0100 Baffle | (1) |
| | 55 | 06-95-0215 8-18x1/2 Pan Hd. Thread Form Screw | (1) |
| | 56 | 12-98-7082 Caution Plate (Not Shown) | (1) |