



SERVICE PARTS LIST

BULLETIN NO.
54-37-0211

SPECIFY CATALOG NO. AND SERIAL NO. WHEN ORDERING PARTS		REVISED BULLETIN	DATE
1-1/2 H.P. ROUTER		54-37-0210	Sept. '96
CATALOG NO.	5660	SERIAL NUMBER	452A
		WIRING INSTRUCTION 58-01-0703	

EXAMPLE:

00	0
----	---

 Component Parts (Small #) Are Included
 When Ordering The Assembly (Large #).

Catalog No. 5660 Includes:

5650 Router Motor Assy. (Figs. 1 thru 33) and

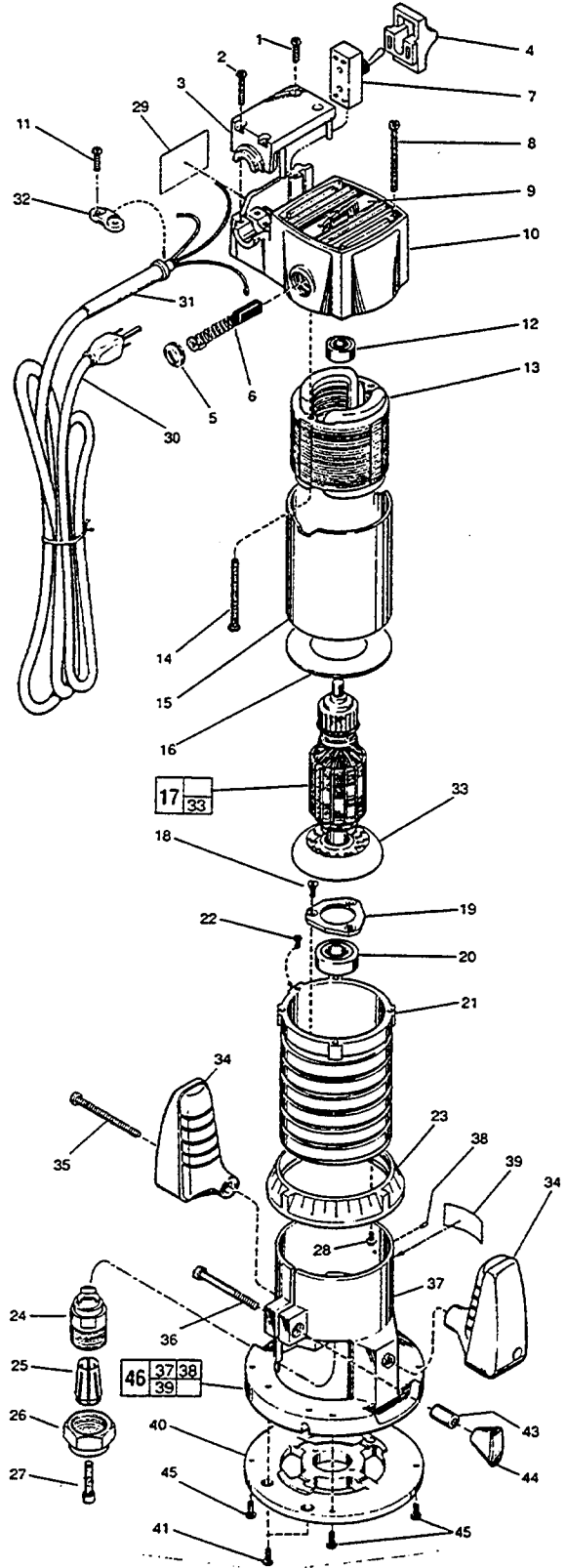
48-10-0070 Router Base Assy. (Figs. 34 thru 45)

FIG.	PART NO.	DESCRIPTION OF PART	NO. REQ.
	1	06-82-7261 6-19 x 11/16" Pan Hd. Plastite T-15 Screw	(2)
	2	06-82-7290 6-19 x 1-1/8" Pan Hd. Plastite T-15 Screw	(2)
	3	31-17-0171 Switch Clamp	(1)
	4	42-42-0190 Switch Button	(1)
	5	23-44-0140 Brush Cap	(2)
	6	22-18-0441 Carbon Brush Assembly	(2)
	7	23-66-1220 Toggle Switch	(1)
	8	06-82-5531 8-32 x 1-7/8" Pan Hd. Taptite T-20 Screw	(4)
	9	12-98-6965 Identification Plate	(1)
	10	31-12-0156 Upper Bearing Cap Assembly	(1)
	11	06-82-7270 8-16 x 5/8" Pan Hd. Slit. Plast. T-20 Screw	(2)
	12	02-04-0850 Ball Bearing	(1)
	13	18-50-0040 120 V. Field	(1)
★	14	06-82-7453 8-16 x 2-1/4" Pan Hd. Plastite T-20 Screw	(2)
	15	23-16-0680 Insulating Sleeve	(1)
	16	23-50-0070 Insulating Spacer	(1)
	17	16-50-0220 120 V. Armature	(1)
★	18	06-82-3792 8-32 x 3/8" Flat Hd. Taptite T-15 Screw	(3)
★	19	44-66-6050 Bearing Retainer	(1)
	20	02-04-1610 Ball Bearing	(1)
	21	28-50-6171 Motor Housing	(1)
	22	06-81-8625 6-32 x 1/4" Ground Screw	(1)
	23	31-58-0010 Adjusting Ring	(1)
★	24	45-10-0076 Chuck Shank	(1)
	25	48-66-0985 1/4" Collet	(1)
★	26	44-40-0471 Collet Nut	(1)
	27	06-75-3005 1/4-20 x 5/8" Socket Hd. Screw	(1)
	28	06-81-5210 6-32 x 1/4" Washer Hd. Screw	(1)
★	29	12-20-0590 Service Nameplate Kit	(1)
	30	22-64-0121 Cord Set	(1)
	31	44-76-0150 Cord Protector	(1)
	32	31-17-0156 Cord Clamp	(1)
	33	22-84-0670 Fan	(1)
	48-10-0070	Router Base (Includes Fig. Nos. 34 thru 45)	(1)
	34	31-44-0275 Handle	(2)
	35	06-82-5554 10-24 x 2-3/8" Pan Hd. Slit. Taptite T-25 Screw	(2)
	36	06-75-0230 1/4-20 x 1-3/4" Hex Hd. Screw	(1)
	37	26-06-0820 Router Base	(1)
	38	06-65-0575 3/32 x 5/16" Long Pin	(1)
★	39	12-25-0010 Router Base Nameplate	(1)
	40	31-06-0090 Sub Base	(1)
★	41	06-82-8865 10-32 x 7/16" Pan Hd. Tapt. Sem. T-25 Screw	(2)
★	43	45-36-1560 Locking Knob Spacer	(1)
★	44	43-98-0510 Locking Knob	(1)
	45	06-82-7252 8-32 x 3/8" Pan Hd. Taptite T-20 Screw	(4)
	46	28-06-0825 Router Base Assembly	(1)

PARTS NOT SHOWN

49-96-4070	7/8" Open End Wrench	(1)
49-96-4100	1-1/4" Open End Wrench	(1)

FIG. 24,27 NOTES:
 Slot in chuck shank must be aligned and engaged with armature shaft. Install screw and tighten to 96 in./lbs. of torque.



MILWAUKEE ELECTRIC TOOL CORPORATION
 13135 W. LISBON RD., BROOKFIELD, WI 53005