



Operating Instructions and Parts Manual 3-Wheel Belt Grinder

Models BGB-142/248/260-1/260-3

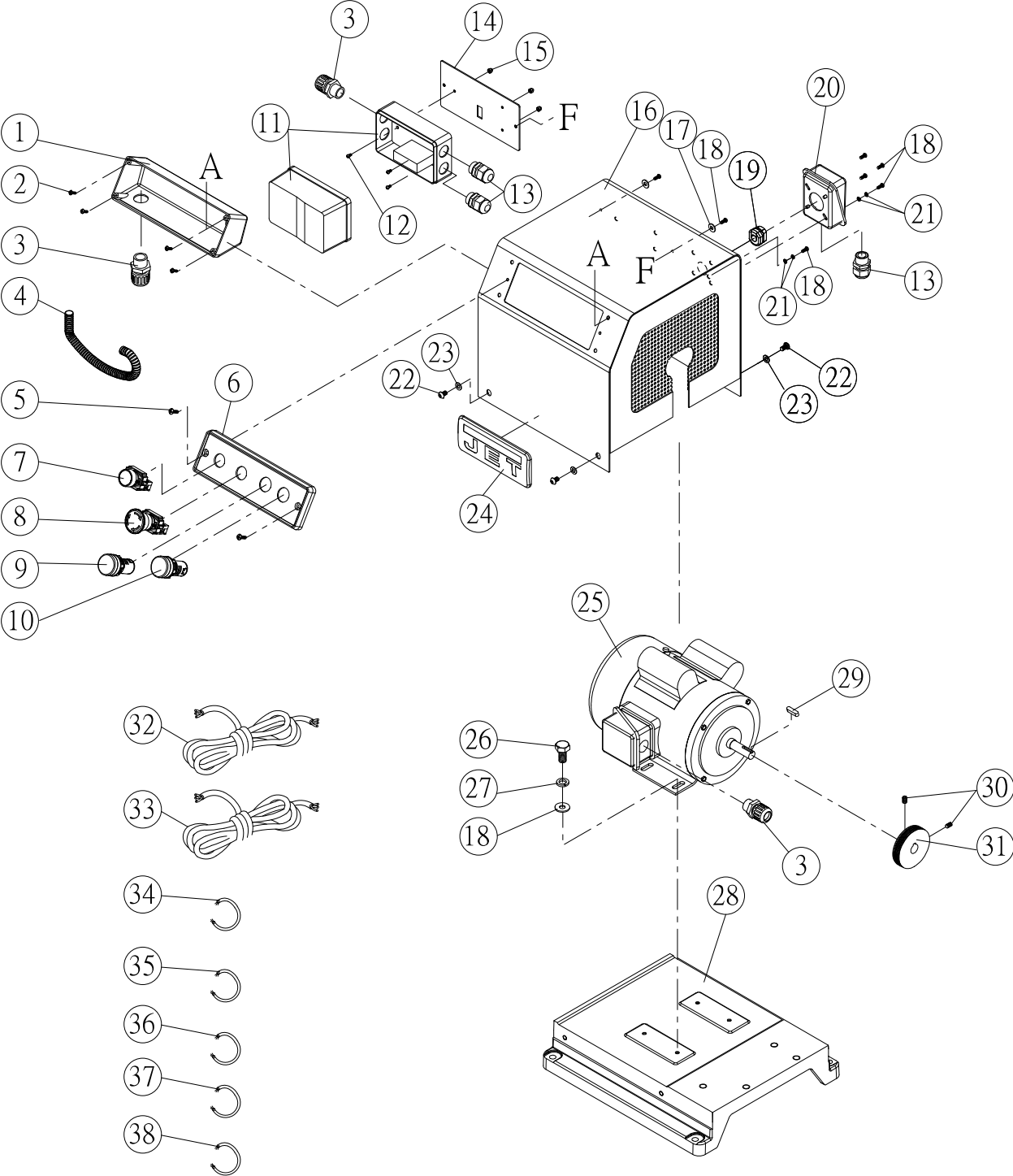


Model BGB-248 shown

JET
427 New Sanford Road
LaVergne, Tennessee 37086
Ph.: 800-274-6848
www.jettools.com

Part No. M-577100
Edition 2 12/2016
Copyright © 2016 JET

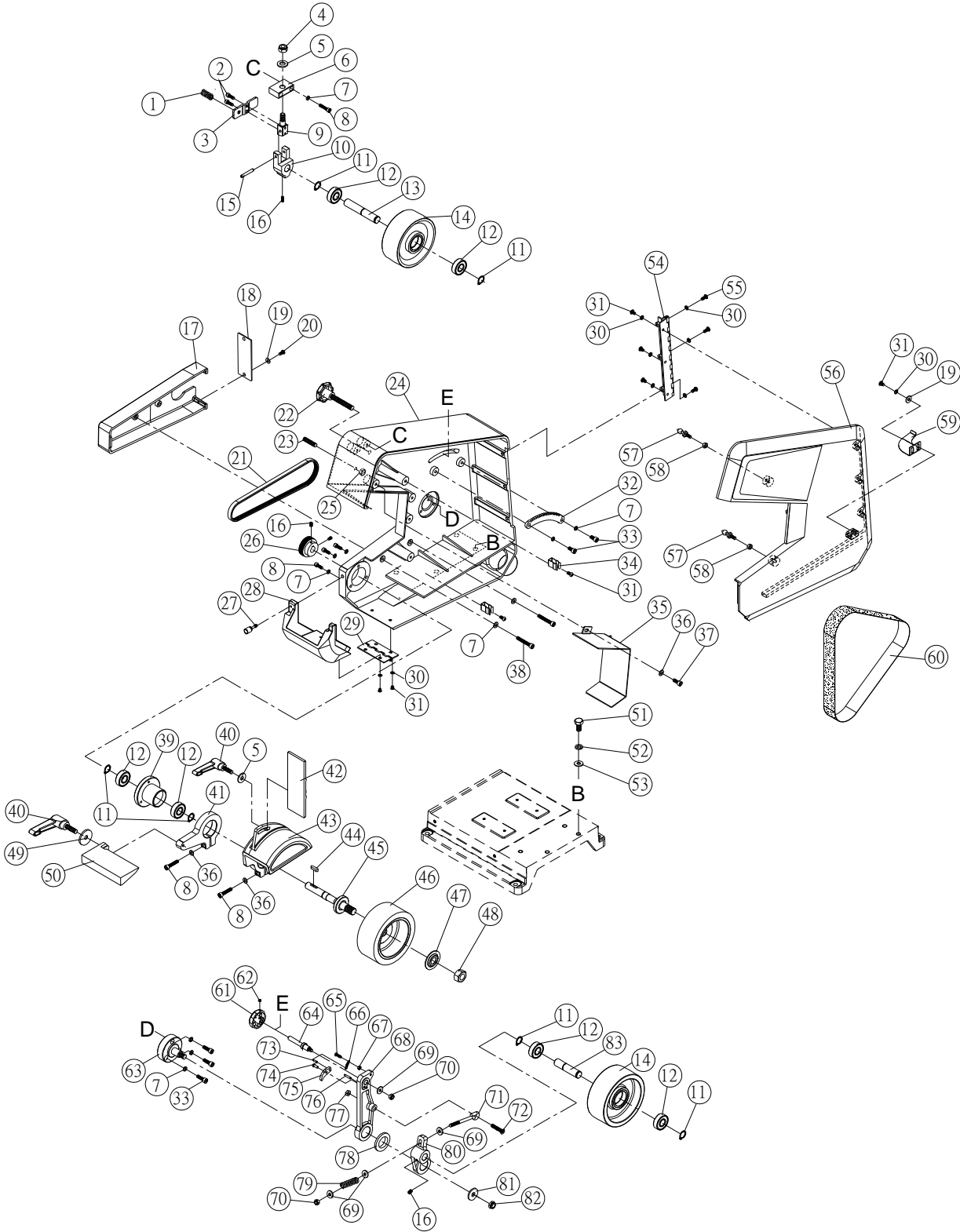
12.2.1 Motor and Base Assembly – Exploded View – Model BGB-260-3



12.2.2 Motor and Base Assembly – Parts List – Model BGB-260-3

Index No	Part No	Description	Size	Qty
1	BGB260-3-101	Switch Box		1
2	6295815	Phillips Round Hd Tapping Screw	M3 x 10L	8
3	BGB248-103	Strain Relief		2
4	BGB248-104	Cable Protection Pipe		1
5	F009887	Socket Head Button Screw	M5 x 0.8P x 16L	2
6	BGB260-3-106	Control Panel (includes LM000261 label)		1
7	BGB260-3-107	ON Switch		1
8	BGB260-3-108	Emergency Stop		1
9	BGB260-3-109	Running Indication Light		1
10	BGB260-3-110	Power Indication Light		1
11	BGB260-3-111	Magnetic Switch Assembly	230V, 3PH	1
	BGB260-3-111C	Contactor		1
	BGB260-3-111O	Overload Relay		1
	BGB260-3-111A	Magnetic Switch Assembly	460V, 3PH	1
	BGB260-3-111AC	Contactor		1
	BGB260-3-111AO	Overload Relay		1
12	TS-2284082	Phillips Pan Hd Machine Screw	M4 x 0.7P x 8L	3
13	BGB260-3-113	Strain Relief		3
14	BGB260-3-114	Switch Plate		1
15	TS-2331041	Cap Nut	M4 x 0.7P	3
16	BGB260-3-116	Motor Shroud		1
17	TS-1550031	Flat Washer	5.1 x 12 x 1T	4
18	TS-1533032	Phillips Pan Hd Machine Screw	M5 x 0.8P x 10L	7
19	BGB260-3-119	Strain Relief		1
20	BGB260-3-120	Terminal Box		1
21	F002097	Lock Washer, Ext. Tooth	M5	4
22	TS-2248122	Socket Head Button Screw	M8 x 1.25 x 12L	5
23	TS-1550061	Flat Washer	8.5 x 20 x 1.5T	10
24	JET-138	JET Logo	138 x 57mm	1
25	BGB260-3-125	Motor	3HP, 230V/460, 3PH	1
	BGB248-120CF	Cooling Fan (not shown)		1
	BGB248-120FC	Fan Cover (not shown)		1
26	TS-2228161	Hex Cap Screw	M8 x 1.25P x 16L	4
27	TS-2361081	Lock Washer	M8	4
28	BGB260-1-123	Base		1
29	6296048	Key, Double Rd Head	5 x 5 x 25L mm	1
30	TS-1522021	Socket Head Set Screw	M5 x 0.8P x 8L	2
31	BGB260-1-126	Pulley		1
32	BGB260-3-132	Power Cable		1
33	BGB260-3-133	Motor Cable		1
34	BGB260-3-134	Internal Cable Set	18AWG, 80cm, 3C	1
35	BGB260-3-135	Internal Cable Set	18AWG, 80cm, 2C	1
36	BGB248-136	Internal Cable	18AWG, 10cm, Red	1
37	BGB260-3-137	Internal Cable	18AWG, 20cm, Black	1
38	BGB260-3-138	Internal Cable	18AWG, 5cm, Black	1

12.4.1 Belt and Housing Assembly – Exploded View – Models BGB-248/260-1/260-3



12.4.4 Belt and Housing Assembly – Parts List – Model BGB-260-3

Index No	Part No	Description	Size	Qty
1	BGB248-201	Compression Spring		1
2	TS-1502031	Socket Head Cap Screw	M5 x 0.8P x 12L	2
3	BGB248-203	Supporting Plate		1
4	TS-1541031	Hex Nut, Nylon Lock	M8 x 1.25P	1
5	TS-1550061	Flat Washer	8.5 x 19 x 2T mm	2
6	BGB248-206	Fixed Bracket		1
7	TS-2361061	Lock Washer	M6	12
8	TS-1503061	Socket Head Cap Screw	M6 x 0.8P x 25L	7
9	BGB248-209	Pivoting Shaft		1
10	BGB248-210	Tracking Wheel Hub		1
11	6292752	Ext. Retaining Ring	STW-15	6
12	BB-6202ZZ	Ball Bearing	6202 ZZ	6
13	BGB248-213	Tracking Wheel Axle		1
14	BGB260-1-214	Tracking Wheel		2
15	5509829	Roll Pin	6 x 36L mm	1
16	TS-1523021	Socket Head Set Screw	M6 x 1.0P x 8L	3
17	BGB260-1-217	Pulley Cover		1
18	BGB248-218	Pulley Cover Rear Plate		1
19	TS-1550031	Flat Washer	5.1 x 12 x 1T mm	4
20	TS-1533032	Phillips Pan Hd Machine Screw	M5 x 0.8P x 10L	2
21	BGB260-1-221	Poly V-Belt		1
22	BGB248-222	Knob		1
23	F010433	Socket Head Set Screw	M8 x 1.25P x 40L	1
24	BGB260-1-224	Housing		1
25	TS-1541031	Hex Nut	M8 x 1.25P	1
26	BGB260-1-226	Spindle Pulley		1
27	BGB248-227	Knob Screw		1
28	BGB260-1-228	Dust Cover		1
29	BGB248-229	Hinge		1
30	TS-2361051	Lock Washer	M5	12
31	TS-2245102	Socket Head Button Screw	M5 x 0.8P x 10L	9
32	BGB248-232	Ratchet		1
33	TS-1503041	Socket Head Cap Screw	M6 x 1.0P x 16L	5
34	BGB248-234	Clip		2
35	BGB260-1-235	Spine Central Guard		1
36	TS-1550041	Flat Washer	6 x 12 x 1T mm	5
37	TS-1503021	Socket Head Cap Screw	M6 x 1.0P x 10L	3
38	TS-1503131	Socket Head Cap Screw	M6 x 1.0P x 60L	2
39	BGB248-239	Bearing Housing		1
40	BGB248-240	Universal Handle		2
41	BGB260-1-241	Table Support Arm		1
42	BGB248-242	Platen		1
43	BGB260-1-243	Contact Wheel Cover		1
44	6296048	Key, Double Rd Head	5 x 5 x 25L mm	1
45	BGB248-245	Contact Wheel Spindle		1
46	BGB260-1-246	Contact Wheel		1
47	BGB248-247	Flange Washer		1
48	TS-0561071	Hex Nut	5/8"-11UNC	1
49	TS-1550061	Flat Washer	8 x 30 x 3T mm	1
50	BGB248-250	Work Rest		1
51	TS-1492011	Hex Cap Screw	M12 x 1.75P x 25L	4
52	TS-2361121	Lock Washer	M12	4
53	TS-155009	Flat Washer	13.5 x 28 x 3T mm	4
54	BGB248-254	Continuous Hinge		1
55	TS-2246162	Socket Head Button Screw	M5 x 0.8P x 16L	3
56	BGB260-1-256	Side Cover		1
57	BGB248-257	Peg		2
58	TS-1540041	Hex Nut	M6 x 1.0P	2
59	BGB248-259	Door Latch		1
60	BGB260-1-260	Abrasive Belt	2"x60" 120G	1

Index No	Part No	Description	Size	Qty
61	BGB248-261	Knob		1
62	F010391	Socket Head Set Screw	M5 x 0.8P x 5L	1
63	BGB248-263	Hub Supporting Shaft		1
64	BGB248-264	Rod		1
65	TS-1532052	Phillips Pan Hd Machine Screw	M4 x 0.7P x 16L	1
66	BGB248-266	Tension Spring		1
67	TS-1540021	Hex Nut	M4 x 0.7P	1
68	BGB248-268	Tension Wheel Arm		1
69	TS-1550041	Flat Washer	6.4 x 16 x 1.6T mm	4
70	TS-1541021	Hex Nut, Nylon Lock	M6 x 1.0P	2
71	BGB248-271	Spring Tension Adj. Rod		1
72	TS-134608	Phillips Flat Hd Machine Screw	1/4"-20UNC x 1-1/4"L	1
73	F012091	Roll Pin	3 x 10L mm	1
74	BGB248-274	Rivet		1
75	BGB248-275	Paw		1
76	F012092	Roll Pin	3 x 18L mm	1
77	TS-0570011	Hex Nut	1/4"-20UNC	1
78	BGB248-278	Oilite Washer		1
79	BGB248-279	Compression Spring		1
80	BGB248-280	Tension Wheel Hub		1
81	TS-1550071	Flat Washer	10.2 x 30 x 3T mm	1
82	TS-0640091	Hex Nut, Nylon Lock	3/8"-16UNC	1
83	BGB248-283	Tension Wheel Axle		1
	LM000251	Warning Label (not shown)	2-1/2" x 5-1/4"	1
	LM000252	Belt Tracking Label (not shown)		1
	LM000253	Belt Tension Label (not shown)		1
	LM000261	Control Panel Label (not shown)		1
	LM000262	ID Label, BGB-260-3 (not shown)		1
	LM000263	Motor Label, BGB-260-3 (not shown)		1