



Record purchase information:

| | |
|-----------------|------------|
| Model No.: | Stock No.: |
| Serial No.: | |
| Purchased from: | |
| Date purchased: | |

Operating Instructions and Parts Manual Benchtop Belt and Disc Sanders

Models IBDG-248/248VS/436/436VS

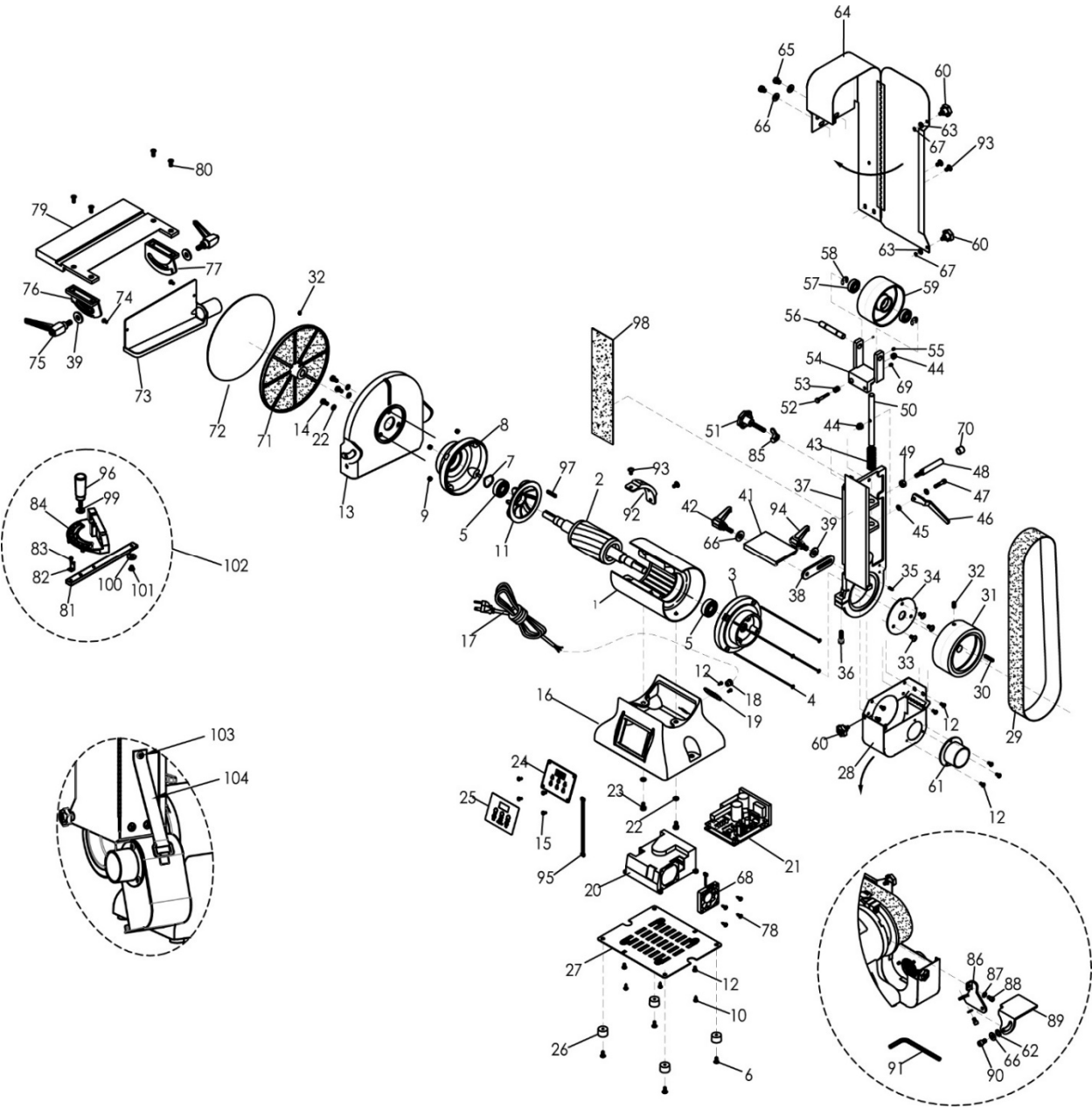


IBDG-248 shown

JET
427 New Sanford Road
LaVergne, Tennessee 37086
Ph.: 800-274-6848
www.jettools.com

Part No. M-578842
Edition 1 01/2020
Copyright © 2020 JET

13.2.1 IBDG-248VS Belt/Disc Sander – Exploded View



13.2.2 IBDG-248VS Belt/Disc Sander – Parts List

| Index No | Part No | Description | Size | Qty |
|----------|--------------|---|------------------------|-----|
| 1 | IBGB248VS-01 | Motor Housing w/ Stator | | 1 |
| 2 | IBDG248VS-02 | Rotor | | 1 |
| 3 | IBGB248-03 | End Cover | | 1 |
| 4 | IBGB248-04 | Cross Head Screw | M5 x 210 x 30S | 4 |
| 5 | BB-6204ZZ | Ball Bearing | 6204ZZ | 2 |
| 6 | IBG8-36 | Truss Head Screw | 3/16"-24 x 1/2" | 4 |
| 7 | IBGB248-07 | Wave Washer | | 1 |
| 8 | IBDG248-08 | End Bell | | 1 |
| 9 | TS-1540031 | Hex Nut | M5 | 4 |
| 10 | 990811 | Pan Head Tapping Screw | M3.5 x 12 | 4 |
| 11 | IBG8-17 | Motor Fan | | 1 |
| 12 | IBG8-04 | Truss Head Screw | 3/16"-24 x 3/8" | 16 |
| 13 | IBDG248-13 | Disc Guard | | 1 |
| 14 | TS-0050021 | Hex Cap Screw | 1/4"-20 x 5/8" | 3 |
| 15 | 6286927 | Flat Head Screw | M4 x 10 | 4 |
| 16 | IBG8VS-10 | Base | | 1 |
| 17 | IBG8-46 | Power Cord | | 1 |
| 18 | IBG8-47 | Strain Relief | | 1 |
| 19 | IBG8-11 | Cord Plate | | 1 |
| 20 | IBG8VS-06 | Electrical Box | | 1 |
| 21 | IBGB248VS-21 | Inverter PCB | | 1 |
| 22 | TS-0720071 | Lock Washer | 1/4" | 5 |
| 23 | TS-0050011 | Hex Cap Screw | 1/4"-20 x 1/2" | 2 |
| 24 | IBGB248VS-24 | Control Panel w/ Digital Readout (includes #25) | | 1 |
| 25 | IBGB248VS-25 | Panel Decal | | 1 |
| 26 | IBG8-02 | Rubber Pad | | 4 |
| 27 | IBG8-03 | Base Plate | | 1 |
| 28 | IBGB248-28 | Drive Wheel Cover | | 1 |
| 29 | IBGB248-29 | Sanding Belt | W 2" x L 48", 80 Grit | 1 |
| 30 | IBGB248-30 | Key | 3/16" x 3/16" x 1-1/4" | 1 |
| 31 | IBGB248-31 | Drive Wheel | Dia. 5" x W 2" | 1 |
| 32 | TS-0267041 | Set Screw | 1/4"-20 x 3/8" | 1 |
| 33 | IBGB248-33 | Truss Head Screw | 1/4"-20 x 3/8" | 3 |
| 34 | IBGB248-34 | Positioning Plate | | 1 |
| 35 | IBGB248-35 | Spring Pin | Dia. 5 x 14 | 1 |
| 36 | TS-0208061 | Socket Hd Cap Screw | 5/16"-18 x 1" | 1 |
| 37 | IBGB248-37 | Sanding Belt Bracket | | 1 |
| 38 | IBGB248-38 | Bracket Plate * | | 1 |
| 39 | TS-0680042 | Flat Washer * | 3/8" | 5 |
| 41 | IBGB248-41 | Sanding Table | | 1 |
| 42 | IBGB248-42 | Adjustable Handle * | 5/16"-18 x 1" | 1 |
| 43 | IBGB248-43 | Spring | | 1 |
| 44 | TS-0640071 | Nylon Lock Hex Nut | 1/4"-20 | 2 |
| 45 | TS-0680021 | Flat Washer | 1/4" | 2 |
| 46 | IBGB248-46 | Tension Handle | | 1 |
| 47 | TS-0207071 | Socket Hd Cap Screw | 1/4"-20 x 1-1/4" | 1 |
| 48 | IBGB248-48 | Stand-Off | Dia. 13 x L 67 | 1 |
| 49 | TS-0561021 | Hex Nut | 5/16"-18 | 1 |
| 50 | IBGB248-50 | Support Post | | 1 |
| 51 | IBGB248-51 | Tracking Adjustment Knob | M8 x 35 | 1 |
| 52 | F000114 | Round Head Screw | 1/4"-20 x 1-1/4" | 1 |
| 53 | IBGB248-53 | Spring | | 1 |
| 54 | IBGB248-54 | Wheel Carrier | | 1 |
| 55 | IBGB248-55 | Set Screw | 3/16"-24 x 1/4" | 2 |
| 56 | IBGB248-56 | Shaft | | 1 |
| 57 | BB-6201VV | Ball Bearing | 6201BR | 2 |
| 58 | 6284728 | E-Ring | 12mm | 2 |
| 59 | IBGB248-59 | Driven Wheel | Dia. 4-1/4" x W 2" | 1 |
| 60 | IBGB248-60 | Knob | 1/4" | 4 |

| Index No | Part No | Description | Size | Qty |
|----------|--------------|--|--------------------|-----|
| 61 | IBGB248-61 | Dust Port | Dia. 2" | 1 |
| 62 | F002176 | External Tooth Lock Washer * | M8 | 1 |
| 63 | TS-1550041 | Flat Washer | M6 | 2 |
| 64 | IBGB248-64 | Belt Cover | | 1 |
| 65 | 6293385 | Hex Cap Screw | 5/16"-18 x 3/8" | 2 |
| 66 | TS-0680031 | Flat Washer * | 5/16" | 4 |
| 67 | IBGB248-67 | S-Ring | 6mm | 2 |
| 68 | IBGB248VS-68 | Cooling Fan | | 1 |
| 69 | TS-0267021 | Set Screw | 1/4"-20 x 1/4" | 1 |
| 70 | IBGB248-70 | Rubber Sleeve | | 1 |
| 71 | IBDG248-71 | Disc | Dia. 9" | 1 |
| 72 | IBDG248-72 | Sanding Disc | 80 Grit | 1 |
| 73 | IBDG248-73 | Disc Lower Guard | | 1 |
| 74 | TS-1533032 | Pan Head Screw | M5 x 10 | 2 |
| 75 | IBDG248-75 | Adjustable Handle | M10 x 20 | 2 |
| 76 | IBDG248-76 | Table Bracket - Right | | 1 |
| 77 | IBDG248-77 | Table Bracket - Left | | 1 |
| 78 | 990811 | Pan Head Tapping Screw | M3.5 x 12 | 4 |
| 79 | IBDG248-79 | Disc Table | | 1 |
| 80 | F001234 | Flat Hd Phillips Mach Screw BO | M6 x 10 | 4 |
| 81 | IBDG248-81 | Steel Bar | | 1 |
| 82 | IBDG248-82 | Pointer | | 1 |
| 83 | 5711571 | Pan Head Machine Screw | 3/16" x 1/4" | 1 |
| 84 | IBDG248-84 | Miter Body | | 1 |
| 85 | TS-154306 | Wing Nut | M8 | 1 |
| 86 | IBGB248-86 | Bracket Plate | | 1 |
| 87 | TS-0720071 | Lock Washer | 1/4" | 2 |
| 88 | TS-0207021 | Socket Hd Cap Screw | 1/4"-20 x 1/2" | 2 |
| 89 | IBGB248-89 | Tool Rest * | | 1 |
| 90 | TS-0208021 | Socket Hd Cap Screw * | 5/16"-18 x 1/2" | 1 |
| 91 | IBGB248-91 | Allen Wrench | 6 x L140mm | 1 |
| 92 | IBG8-50 | Lamp Fixed Bracket | | 1 |
| 93 | IBGB248-33 | Truss Head Screw | 1/4"-20 x 3/8" | 2 |
| 94 | IBGB248-94 | Adjustable Handle * | 3/8"-16 x 3/4" | 1 |
| 95 | IBGB248VS-95 | Signal Line | | 1 |
| 96 | IBDG248-96 | Grip | M8 x 25 | 1 |
| 97 | IBDG248-97 | Key, Dbl Rd Hd | 3/16" x 3/16" x 1" | 1 |
| 98 | IBGB248-98 | Graphite Sheet | | 1 |
| 99 | TS-1550061 | Flat Washer | M8 | 1 |
| 100 | IBDG248-100 | Guide Ring | | 1 |
| 101 | JVM836-31B | Flat HD Phillips Machine Screw | M6 x 6 | 1 |
| 102 | IBDG248-102 | Miter Gauge Assembly | | 1 |
| 103 | IBGB248-33 | Truss Head Screw | 1/4"-20 x 3/8" | 1 |
| 104 | IBDG248-104 | Nylon Strap | | 1 |
| 105 | IBDG248-105 | Allen Wrench (not shown) | 3 x L140mm | 1 |
| | JET-92-73R | JET Logo (not shown) | 92 x 38 mm | 1 |
| | LM000401 | ID/Warning Label, IBDG-248VS (not shown) | | 1 |
| | IBGB248-HP | Hardware Package * | | 1 |

Hardware package includes items marked with asterisk (*).