

PARTS LEGEND

2125-F18, 590000

1	590001	6	Screw	28	590035	1	Spring Holder
2	590002	7	Washer	29	590036	1	Compression Spring
3	590003	1	Exhaust Cover	30	590037	1	Work Contacting Element
4	590004	1	Compression Spring	→ 31	500536	1	Back Plate
5	590005	1	Seal	▲ 32	590039	2	Screw M4 x 18
6	590006	1	Cap	33	590040	1	Spacer
* 7	590007	1	O-Ring	34	590041	1	Cover
* 8	590022	1	O-Ring	35	590042	9	Washer
9	590008	1	Washer	▲ 36	590043	8	Screw
10	590009	1	Main Valve Piston	37	590070	1	Piston Assembly
*11	590010	1	O-Ring	38	590050	1	Hex Nut M5
*12	590011	1	O-Ring	39	590071	1	Latch Assembly
13	590013	1	Collar	40	590055	1	Screw M5 x 20
14	590014	1	Cylinder	→ 41	500537	1	Fixed Magazine
15	590015	1	Bumper	43	590058	1	Compression Spring
*16	590016	1	O-Ring	→ 44	500538	1	Movable Magazine
17	590023	1	Pipe Assembly	45	590060	1	End Plate
18	590018	1	Housing	→ 46	500539	1	Follower
19	590019	1	Driver Blade Seal	47	590062	1	Spring Holder
20	590020	1	Seal	48	590063	1	Stopper
21	590069	1	Trigger Valve Assembly	49	590064	1	Front Stopper
22	590027	1	Compression Spring	50	590065	1	Screw M4 x 12
23	590028	1	E-Ring	→ 51	401510	1	O-Ring, Piston
24	590029	1	Trigger	** 52	590243	1	Nameplate
25	590030	1	Step Pin	53	590244	1	Warning Label
26	590033	1	Air Plug	54	405477	2	Housing Label
27	590034	1	Support				

* Denotes Normal Wear Items.

** Make sure Warning Label (590244) is properly affixed.
Replace if necessary.

Label available at no charge through the Service Parts Dept.

▲ Apply Loctite 242 (Blue) Part No. 093500.

SAFETY INSTRUCTIONS

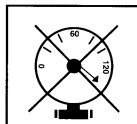
WEAR EYE AND HEARING PROTECTION



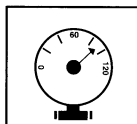
Always wear hearing protection and eye protection devices, including side shields when operating or working in the vicinity of a tool.



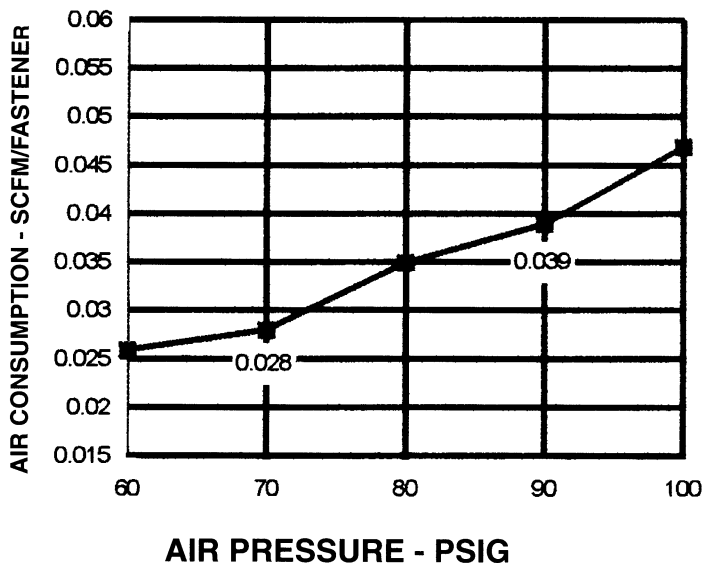
DO NOT EXCEED MAXIMUM RECOMMENDED AIR PRESSURE

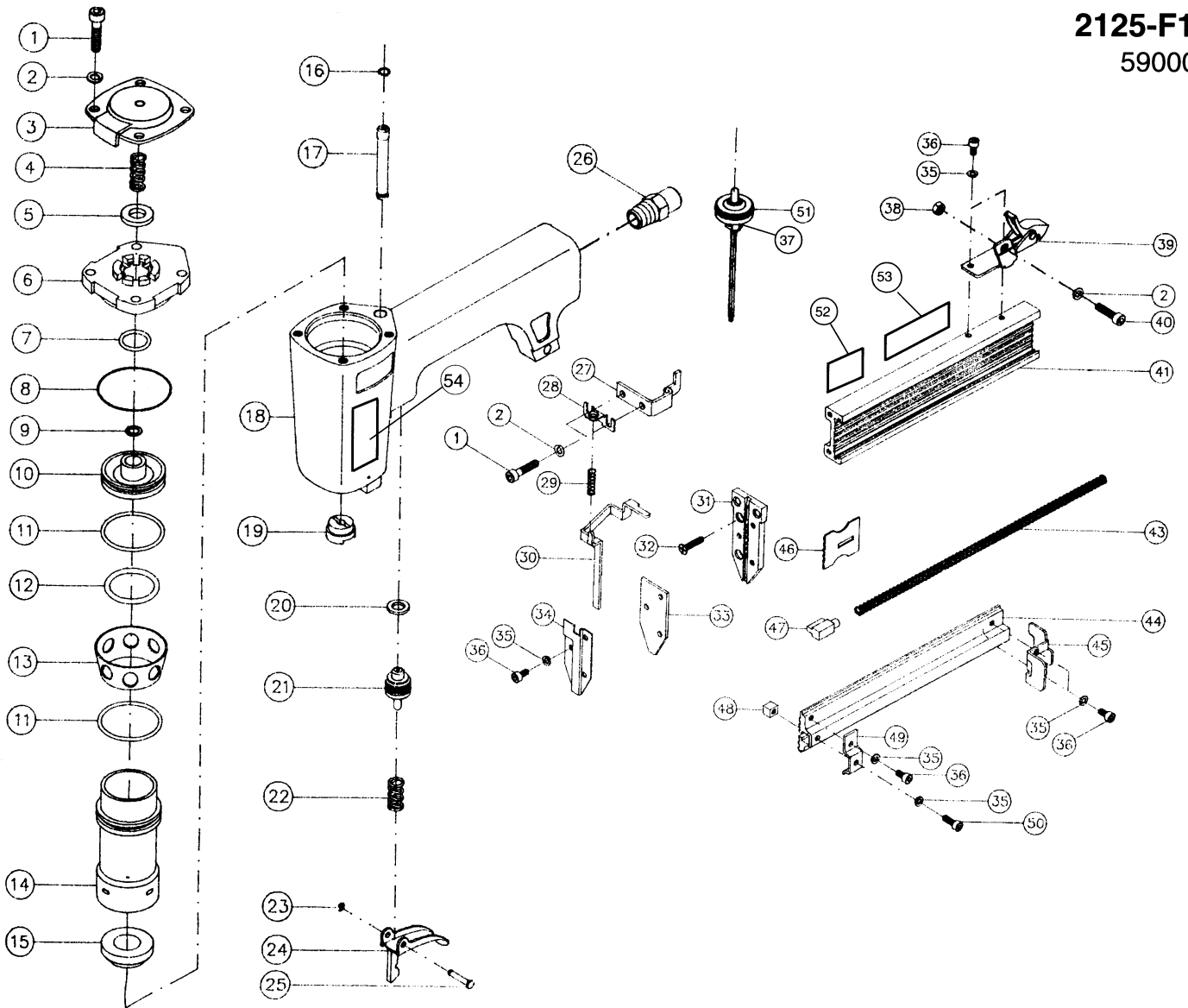


Operate the tool using only the recommended air pressure. Do not exceed the maximum air pressure marked on the tool. Be sure the air pressure gauge is operating properly and check it at least twice a day.



Never use any bottled air or gases such as oxygen to operate the tool since they could cause the tool to explode.





⚠ WARNING

All parts must be periodically inspected and replaced if worn or broken. Failure to do this can affect the tool's operation and present a safety hazard.