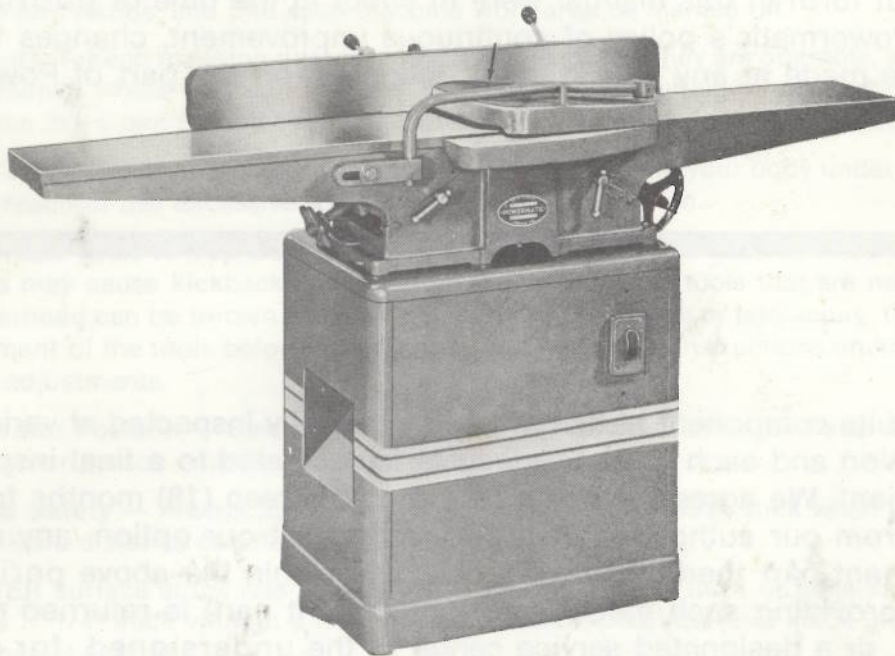


# Model 60 8" JOINTER

SER 7961465

## MAINTENANCE INSTRUCTIONS AND PARTS LIST



# POWERMATIC®

Strength and performance right down the line.

POWERMATIC  OUDAILLE, INC.  
McMinville, Tennessee 37110

AC 615-473-5551

## **Bearing Replacement:**

Disconnect jointer from power source.

See "Cutterhead Removal" and remove the cutterhead assembly. Remove bearing housings with an arbor press or wheel puller. Using fine emery cloth, clean the cutterhead shaft and coat with oil. Press new bearing onto shaft, replace bearing housings and re-install cutterhead assembly.

## **Lubrication and Maintenance :**

Before attempting any maintenance disconnect jointer from power source.

**Cutterhead Bearings:** Bearings are sealed and do not require lubrication.

**Table Ways:** Lubricate twice yearly with non-hardening grease such as Fiske "Lubriplate."

**Table Raising Screws:** Lubricate twice yearly with Fiske "Lubriplate" or equivalent.

**Table Surfaces:** Do not wax. Sprinkle lightly with talc. Rub in briskly with a blackboard eraser. Repeat weekly for first eight weeks — then monthly. Talc will form a moisture barrier in table pores, keeping table tops slick and free of rust.

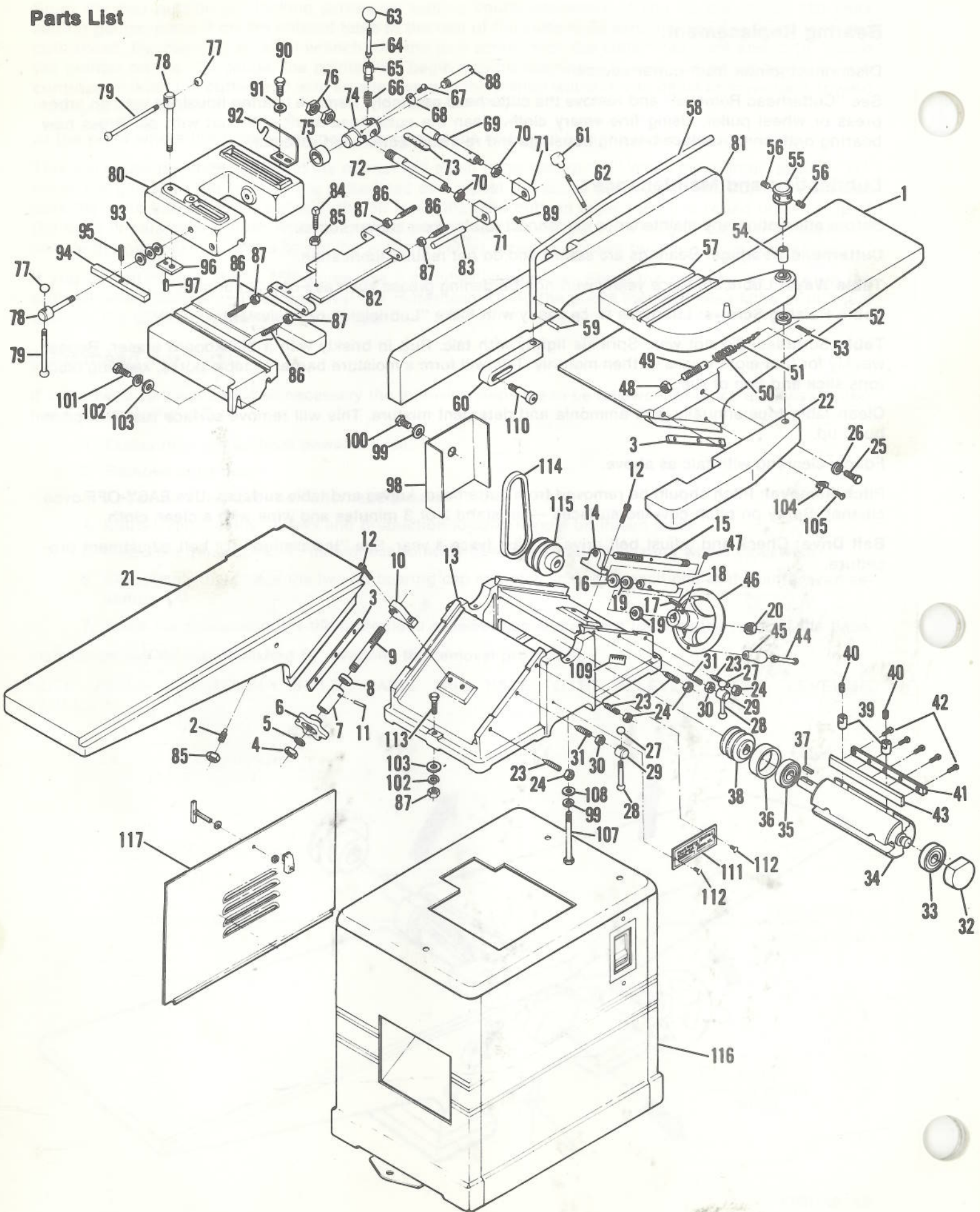
Clean table tops annually with ammonia and detergent mixture. This will remove surface rust and pitch build up.

Follow cleaning with talc as above.

**Pitch Removal:** Pitch should be removed from cutterhead, knives and table surfaces. Use EASY-OFF oven cleaner. Spray on pitch covered surfaces — let stand 2 or 3 minutes and wipe with a clean cloth.

**Belt Drive:** Check and adjust belt drive at least twice a year. See "Installation" for belt adjustment procedure.

# Parts List



8" JOINTER - BASIC UNIT			
ITEM NO.	PART NO.	DESCRIPTION	QTY.
1	3797001	TABLE, FRONT	1
2	6715119	SCREW, SOC. SET DOG PT. 5/16" - 18 X 3/8"	2
3	3244013	GIB, OUTFEED TABLE	2
	2690014	SCREW ASSY., TABLE RAISING (REAR) (INCL. ITEMS 4 THRU 11)	
4	6518008	NUT, HEX. JAM 1/2 - 13	1
5	6861501	WASHER, 1/2", FLAT	1
6	3271008	HANDWHEEL, 3-1/2" DIA.	1
7	3070002	BUSHING, HANDWHEEL	1
8	3096219	COLLAR, REAR ADJ. SCREW	1
9	3690011	SCREW, ADJ. (REAR)	1
10	3529008	OPERATING NUT, TABLE RAISING	1
11	6626056	PIN, SPRING 5/32" X 3/4"	1
12	6715020	SCREW 5/16" - 18 X 1" SOC. HD. CAP	4
13	3042083	BASE	
	2690015	SCREW ASSY. TABLE RAISING (INCL. ITEMS 14 THRU 20)	1
14	3529008	OPERATING NUT, TABLE RAISING	1
15	3691010	SCREW, ELEVATING	1
16	3096219	COLLAR, ADJ. SCREW	1
17	6626056	PIN, SPRING 5/32" X 3/4"	1
18	3728009	SLEEVE, TABLE RAISING SCREW	1
19	6064000	BEARING, BALL THRUST, NICE 603-1/4	2
20	6518007	NUT SELF LOCKING, STL, PLAIN 1/2" - 13	1
21	3797051	TABLE, REAR	1
22	3064064	BRACKET, RABBIT	1
23	6714130	SCREW, 1/4" - 20 X 1" SOC. SET CONE PT.	4
24	6514001	NUT, 1/4" - 20 HEX.	4
25	6716031	SCREW 3/8" - 16 X 1" HEX. HD.	2
26	6861300	WASHER SPRING LOCK 3/8"	2
	2695032	SCREW, LOCK ASSEMBLY (INCL. ITEMS 27 THRU 31)	2
27	3406216	KNOB	1
28	3268202	HANDLE	1
29	3448003	LOCK	1
30	6515001	NUT 5/16" - 18 HEX.	1
31	6715153	SCREW 5/16" - 18 X 1-3/8" CONE PT.	1
	2109003	CUTTERHEAD ASSY. (INCL. ITEMS 32 THRU 38)	1
32	3298003	HOUSING BEARING	1
33	6060111	BEARING, HOOVER 99 R 12	1
34	3112002	CUTTERHEAD, 8" JOINTER	1
35	6060009	BEARING MRC 204SZZ	1
36	3298004	HOUSING, BEARING	1
37	3388009	KEY 3/16" X 3/16" X 1-3/4"	1
38	6807071	SHEAVE 2AK23 3/4" BORE BROWNING	1
	2438001	LIFTER ASSY., CUTTERHEAD KNIFE (INCL. ITEMS 39 THRU 40)	6
39	3438201	LIFTER, KNIFE CUTTERHEAD	1
40	6714129	SCREW SOC. SET 1/4 - 20 X 3/4" LG.	1
	2724002	SHIM ASSY. (INCL. ITEMS 41 THRU 42)	3
41	3244030	GIB, KNIFE, 8" JOINTER	3
42	3690065	SCREW ADJ. SHIM	15
43	6427002	KNIFE CUTTERHEAD (SET OF 3)	1
	2271006	HAND WHEEL ASSY. (INCL. ITEMS 44 THRU 47)	1
44	6624006	PIN GROOVE STEEL	1
45	3268201	HANDLE, NYLON MACHINE	1
46	3271049	HANDWHEEL 6" DIA.	1
47	6715013	SCREW, 5/16" - 18 X 3/8" LG. (CUP PT.)	1
	2250029	GUARD, ASSY. (INCL. ITEMS 48 THRU 60)	1
48	6514008	NUT, HEX. JAM 1/4" - 20	1
49	3773005	STUD, GUARD SPRING	1
50	6813023	SPRING, EXTENSION J-8-1, 1/2" O.D. X 3-3/4" LG.	1
51	3083018	CHAIN, SASH #8 X 2-3/8" LG.	1
52	3096220	COLLAR, GUARD SPRING	1
53	6622005	PIN, COTTER KEY 1/8" X 1-1/4" X 1/4"	1
54	6095024	BUSHING, BRONZE, 5/8" X 3/4" O.D. X 1-1/4"	1
55	3583025	PIN, GUARD MTG.	1
56	6715013	SCREW, SOC. SET 5/16" - 18 X 3/8" LG. (CUP PT.)	2
57	3250047	GUARD, CUTTERHEAD	1
58	3783002	SUPPORT, ROD, GUARD	1
59	6626029	PIN, SPRING 3/16" X 1" LG.	2

8" JOINTER - BASIC UNIT			
ITEM NO.	PART NO.	DESCRIPTION	QTY.
60	3289017	HOLDER, GUARD ROD	1
	2195007	FENCE ASSY. (INCL. ITEMS 61 THRU 93)	1
61	3406201	KNOB, TEARDROP	1
62	3670039	ROD, HANDLE	1
	2670009	ROD, ASSY. TILTING (INCL. ITEMS 63 THRU 76)	1
	2440005	LOCK ASSY. PLUNGER (INCL. ITEMS 63 THRU 66)	
63	3406208	KNOB ROUND 1" DIA. NYLON 1/4" - 20	1
64	3601204	PLUNGER, FENCE STOP	1
65	3529012	OPERATING NUT, FENCE STOP PLUNGER	1
66	6813007	SPRING, COMPRESSION JS - 3-3/8" O.D. X 1-1/4" LG.	1
67	6706079	SCREW, ROUND HD. 6 - 32 X 1/4"	1
68	3604008	POINTER	1
69	3670023	ROD, TILTING STOP	1
70	6567006	NUT HEX., JAM 7/16" - 20	2
71	3064038	BRACKET, TABLE STOP	2
72	8670049	ROD, TILT, DEGREE	1
73	3684205	SCALE, FENCE TILTING	1
74	3092010	CLAMP, FENCE TILT	1
75	3728003	SLEEVE, FENCE TILTING	1
76	3526205	NUT, HEX., JAM 7/16" - 20	2
	2695010	SCREW LOCK ASSY. FENCE (INCL. ITEMS 77 THRU 79)	1
77	3406016	KNOB, HANDLE	2
78	3695006	SCREW, LOCK	2
79	3268002	HANDLE	2
80	3042055	BASE, FENCE SLIDE	1
81	3196005	FENCE, TABLE	1
82	3282009	HINGE, FENCE MTG.	1
83	3584213	PIN, HINGE BLOCK MTG.	1
84	6715088	SCREW, SQ. HD. 5/16" - 18 X 1"	1
85	6515007	NUT, HEX. JAM 5/16" - 18	3
86	6716117	SCREW 3/8" - 16 X 1-1/2" SLOTTED SET	4
87	6516009	NUT, HEX. JAM 3/8" - 16	7
88	3697002	SCREW, SHOULDER	1
89	6714008	SCREW, SOC. SET 1/4" - 20 X 5/16"	1
90	6714114	SCREW 1/4" - 20 RD. HD. X 3/8" LG.	2
91	6861101	WASHER 1/4" PLAIN FLAT	2
92	3064233	BRACKET, FENCE LOCK	1
93	6861501	WASHER 1/2" PLAIN FLAT	3
	2386003	KEY ASSY., FENCE SLIDING (INCL. ITEMS 94 THRU 95)	1
94	3388031	KEY 3/8" X 3/8" X 10-5/16"	1
95	6626005	PIN, SPRING 1/8" X 7/8"	1
	2526001	NUT ASSEMBLY, FENCE SLIDING (INCL. ITEMS 96 THRU 97)	1
96	3528004	LOCKNUT, FENCE SLIDE	1
97	6626038	PIN, SPRING 1/4" X 1" LG.	1
98	3250006	GUARD, BELT	1
99	6861200	WASHER, SPRING LOCK 5/16"	3
100	6715045	SCREW, HEX. HD. 5/16" - 18 X 2-1/2"	1
101	6716039	SCREW, HEX. HD. 3/8" - 16 X 1-1/4"	2
102	6861300	WASHER, SPRING LOCK, 3/8"	5
103	6861301	WASHER, FLAT 3/8"	5
104	3604004	POINTER	1
105	6706035	SCREW, ROUND HD. 6 - 32 X 1/4"	1
106	3776020	SUPPORT, FENCE	1
107	6715047	SCREW, HEX. HD. 5/16" - 18 X 5" LG.	2
108	6861201	WASHER, FLAT 5/16"	2
109	3684220	SCALE, TABLE HEIGHT ADJ.	1
110	6716063	SCREW 3/8" - 16 X 1-1/4" LG. SHOULDER BOLT	1
111	3312228	PLATE, I.D.	1
112	6747000	SCREW, DRIVE	2
113	6716035	SCREW, 3/8 - 16 X 1-3/4 HEX. HD.	3
114	6077026	BELT, 4L540	1
115	6807056	SHEAVE, MOTOR	1
116	2759030	ASSEMBLY, JOINTER STAND	1
117	2136013	ASSEMBLY, DOOR	1

# SCHEMATIC, COMPOSITE ELECTRICAL for MODEL 60-8" JOINTER

## MANUAL

REF.	QTY.	POWERMATIC NO.	MFG. DESCRIPTION
S1	1	(3Ø) 6821135 (1Ø) 6821134	SWITCH, FURNAS 12BA34P SWITCH, FURNAS 12BA24P

## MAGNETIC

REF.	QTY.	POWERMATIC NO.	MFG. DESCRIPTION
M1	1	(3Ø) 6816111 (1Ø) 6816105	STARTER, MAGNETIC, FURNAS, 14BF32BC71 STARTER, MAGNETIC, FURNAS, 14CF12BA7
(PB 1) (PB 2)		6821014	SWITCH, FURNAS, MOMENTARY PB, B2873IB

## MAGNETIC WITH LOW VOLTAGE CONTROL

REF.	QTY.	POWERMATIC NO.	MFG. DESCRIPTION
(PB 1) (PB 2)	1	6821014	SWITCH, FURNAS, MOMENTARY PB, B2873IB
T1	1	6831068	TRANSFORMER 115/230-24V, 50 VA
		6831069	TRANSFORMER 230-460-24V, 75 VA
		6831070	TRANSFORMER 230/460-115V, 50VA
1M (WITH XMF)	1	6816119	STARTER, MAG. W/XMR. 1Ø, 24V, FURNAS 14CF107013
		6816138	STARTER, MAG. W/XMR. 1Ø, 115V, FURNAS 14CF107017
		6816122	STARTER, MAG. W/XMR. 3Ø, 24V, FURNAS 14BF32BJ71BD
		6816126	STARTER, MAG. W/XMR. 3Ø, 115V, FURNAS 14BF32BA71BA
MTR.	1	6470801	MOTOR, ELECT. 3/4 HP, 1Ø 3600 RPM, 115/230V, 56 FR
		6470809	MOTOR, ELECT. 3/4 HP, 3Ø, 3600 RPM, 200V, 56 FR
		6470810	MOTOR, ELECT. 3/4 HP, 3Ø, 3600 RPM, 230/460V, 56 FR
		6471100	MOTOR, ELECT. 3/4 HP, 1Ø, 3600 RPM, 115/230V, 56 FR
		6471118	MOTOR, ELECT. 3/4 HP, 3Ø, 3600 RPM, 200V, 56 FR
		6471119	MOTOR, ELECT. 3/4 HP, 1Ø, 3600 RPM, 230/460V, 56 FR
		6471400	MOTOR, ELECT. 3/4 HP, 3Ø, 3600 RPM, 115/230V, 56 FR
		6471412	MOTOR, ELECT. 3/4 HP, 3Ø, 3600 RPM, 200V, 56 FR
		6471413	MOTOR, ELECT. 3/4 HP, 3Ø, 3600 RPM, 230/460V, 56 FR