



SERVICE PARTS LIST

BULLETIN NO.
54-38-1176

SPECIFY CATALOG NO. AND SERIAL NO. WHEN ORDERING PARTS		REVISED BULLETIN 54-38-1175	DATE Nov. '98
DETAIL SANDER			
CATALOG NO. 6030-20	STARTING SERIAL NUMBER	902A997280001	
WIRING INSTRUCTION			

EXAMPLE:

00	0
----	---

 Component Parts (Small #) Are Included
 When Ordering The Assembly (Large #).

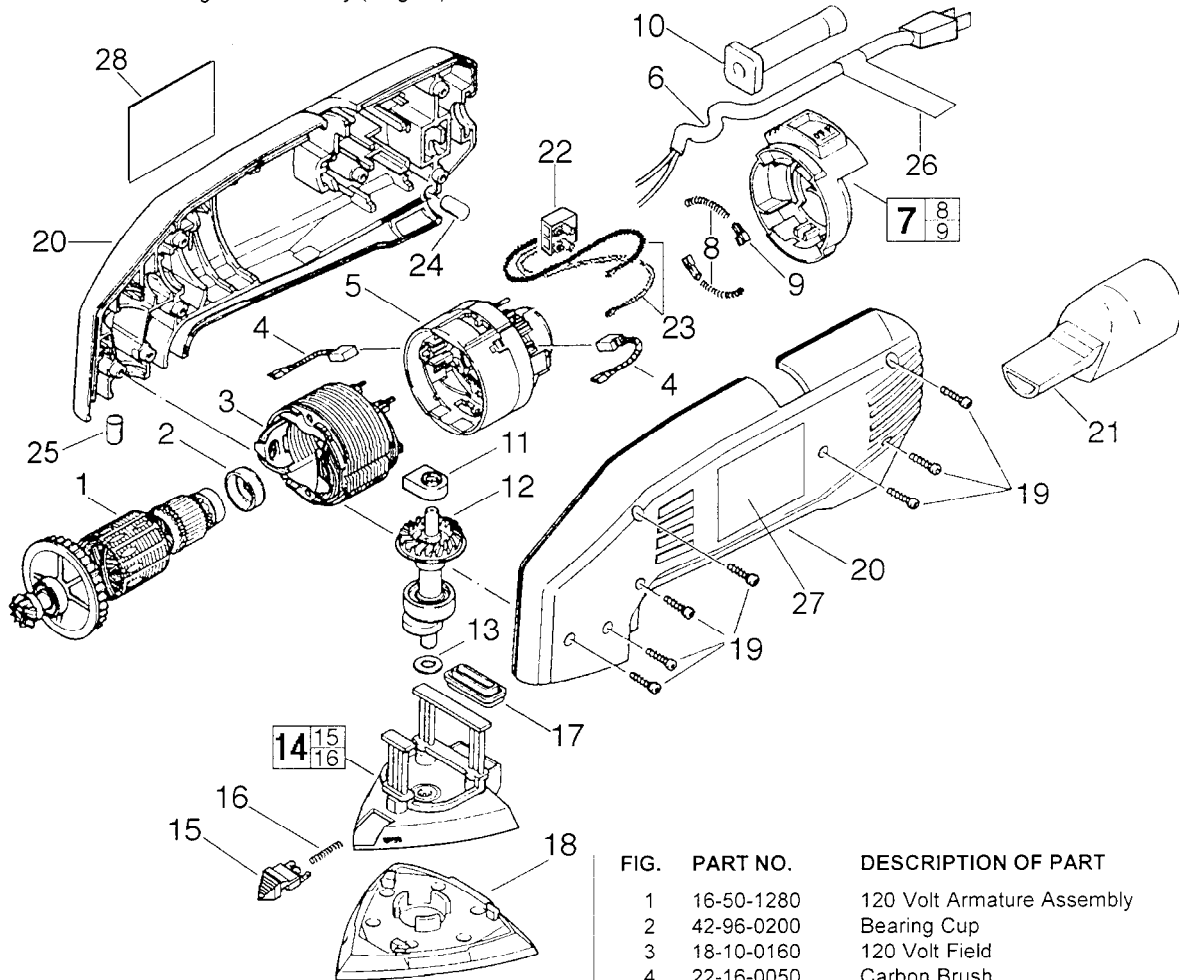


FIG. LUBRICATION

11,14 Apply Type "N" Grease, No. 49-08-4230, in the needle bearing opening of the quik-lok base plate and inside the opening of the insert/bearing assembly.

12 Evenly apply 3 grams of Type "N" Grease, No. 49-08-4230, on the gear teeth of the drive shaft assembly.

FIG. NOTES:

19 Torque to 15-18 in./lbs.

14 Screws on the bottom of the quik-lok base plate (not for sale) should be torqued to 4-6 in./lbs.

FIG.	PART NO.	DESCRIPTION OF PART	QTY
	1	120 Volt Armature Assembly	(1)
	2	Bearing Cup	(1)
	3	120 Volt Field	(1)
	4	Carbon Brush	(2)
	5	Brush Holder Assembly w/Brushes	(1)
	6	Cord	(1)
	7	Switch	(1)
	8	Spring	(2)
	9	Spring Adapter	(2)
	10	Cord Protector	(1)
	11	Insert/Bearing Assembly	(1)
	12	Drive Shaft Assembly	(1)
	13	Felt Ring	(1)
	14	Quik-Lok Base Plate	(1)
	15	Release Button	(1)
	16	Spring	(1)
	17	Dust Bellow	(1)
	18	Sanding Pad	(1)
	19	Screw	(7)
	20	Housings (1 pr.)	(1)
	21	Vacuum Adapter	(1)
	22	Terminal Block	(1)
	23	Lead Wire	(2)
	24	Rubber Slug	(1)
	★ 25	Rubber Slug	(1)
	26	Warning Label	(1)
	27	Milwaukee Logo Label	(1)
	28	Service Nameplate Kit	(1)