



SERVICE PARTS LIST

BULLETIN NO.
55-38-0200

SPECIFY CATALOG NO. AND SERIAL NO. WHEN ORDERING PARTS		REVISED BULLETIN	DATE
7" (180mm) LARGE ANGLE GRINDER			Jan. 2013
CATALOG NO.	6086-30M	SERIAL NUMBER	F07A
		WIRING INSTRUCTION	

EXAMPLE:
Component Parts (Small #)
Are Included When Ordering
The Assembly (Large #).

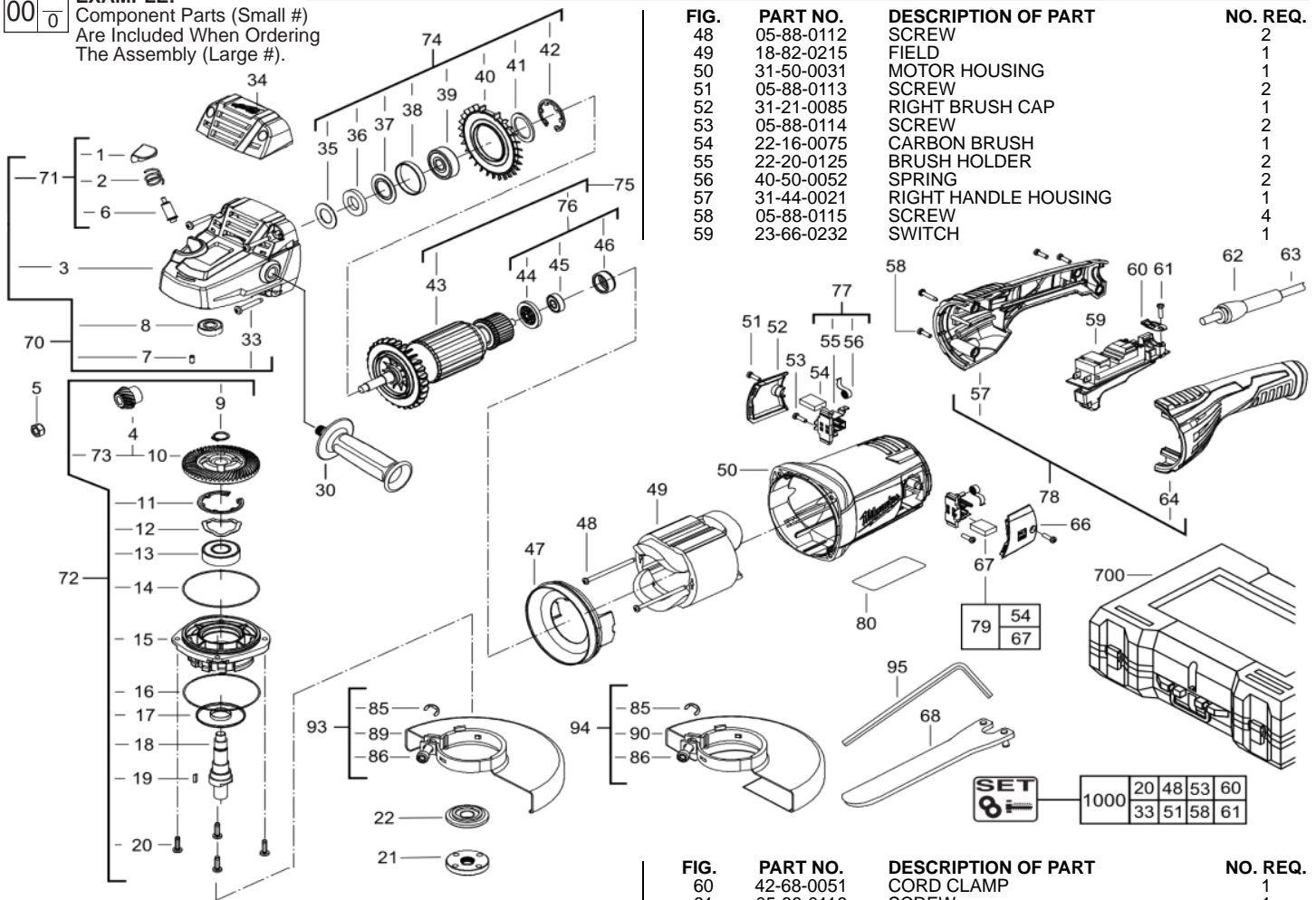
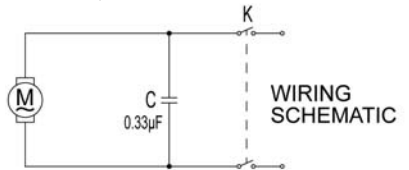


FIG.	PART NO.	DESCRIPTION OF PART	NO. REQ.
1	42-42-0041	LOCKING CAP	1
2	40-50-0051	LOCKING SPRING	1
3	28-14-0105	GEARCASE	1
4	32-05-0031	PINION	1
5	02-04-0180	NUT	1
6	44-60-0081	LOCKING PIN	1
7	44-60-0082	RUBBER PIN	1
8	02-04-0181	BEARING	1
9	05-92-0025	14MM RETAINER	1
10	32-42-0050	LARGER GEAR	1
11	05-92-0026	40MM RETAINER	1
12	45-88-0071	WAVE WASHER	1
13	02-04-0182	BEARING	1
14	34-40-0041	O-RING	1
15	28-53-0080	ALU FLANGE (KEYED)	1
16	34-40-0042	O-RING	1
17	45-06-0031	DUST PROTECTOR	1
18	38-50-0031	M14 SPINDLE	1
19	43-96-0025	KEY	1
20	05-88-0110	SCREW	4
21	43-34-0071	OUTER FLANGE (For M14 Spindle)	1
22	43-34-0073	INNER FLANGE (For M14 Spindle)	1
30	43-62-0061	PLASTIC SIDE HANDLE	1
33	05-88-0111	SCREW	4
34	31-15-0041	GEARCASE CAP	1
35	45-88-0072	WASHER	1
36	45-06-0032	COTTON SEAL	1
37	45-88-0081	WASHER	1
38	42-96-0040	RUBBER BEARING SLEEVE	1
39	02-04-0183	BEARING	1
40	05-92-0105	DUST-PROOF WASHER	1
41	45-88-0082	WASHER	1
42	05-92-0027	37MM RETAINER	1
43	16-82-0210	ARMATURE	1
44	45-88-0083	PLASTIC PLATE	1
45	02-04-0184	BEARING	1
46	42-96-0041	RUBBER CAP	1
47	42-14-0030	AIR DEFLECTOR	1

FIG.	PART NO.	DESCRIPTION OF PART	NO. REQ.
48	05-88-0112	SCREW	2
49	18-82-0215	FIELD	1
50	31-50-0031	MOTOR HOUSING	1
51	05-88-0113	SCREW	2
52	31-21-0085	RIGHT BRUSH CAP	1
53	05-88-0114	SCREW	2
54	22-16-0075	CARBON BRUSH	1
55	22-20-0125	BRUSH HOLDER	2
56	40-50-0052	SPRING	2
57	31-44-0021	RIGHT HANDLE HOUSING	1
58	05-88-0115	SCREW	4
59	23-66-0232	SWITCH	1
60	42-68-0051	CORD CLAMP	1
61	05-88-0116	SCREW	1
62	44-76-0042	CORD SLEEVE	1
63	22-64-0473	POWER CORD	1
64	31-44-0022	LEFT HANDLE HOUSING	1
66	31-21-0086	LEFT BRUSH CAP	1
67	22-16-0076	SHUT OFF CARBON BRUSH	1
68	45-96-0066	WRENCH	1
70	14-30-0085	GEARCASE ASSEMBLY	1
71	14-48-0060	LOCKING ASSEMBLY	1
72	14-73-0046	M14 SPINDLE ASSEMBLY (KEYED)	1
73	14-29-0091	PINION & GEAR ASSEMBLY	1
74	45-06-0033	DUST PROTECTOR & BEARING ASSY.	1
75	16-82-0220	ARMATURE & BEARING ASSY.	1
76	02-04-0185	BALL BEARING ASSEMBLY	1
77	22-22-0125	BRUSH HOLDER ASSEMBLY	1
78	14-38-0105	HOUSING ASSEMBLY	1
79	22-22-0135	CARBON BRUSH ASSY (Incl. both brushes)	1
80	-----	SERVICE RATING LABEL	1
85	44-86-0041	RETAINING RING	1
86	05-75-0105	HEX SCREW	1
89	43-54-0095	GUARD (KEYED)	1
90	43-54-0097	CUTTING GUARD (KEYED)	1
93	14-32-0238	GUARD ASSY (KEYED)	1
94	14-32-0240	CUTTING GUARD ASSEMBLY (KEYED)	1
95	45-96-0065	HEX WRENCH	1
700	14-38-0106	BLOW MOLDED CARRYING CASE	1
1000	05-88-0118	SCREW ASSEMBLY (Incl. Items: 20,33,48,51,53,58,60,61)	1



MILWAUKEE ELECTRIC TOOL CORPORATION
13135 W. LISBON RD., BROOKFIELD, WI 53005
Drwg. 1