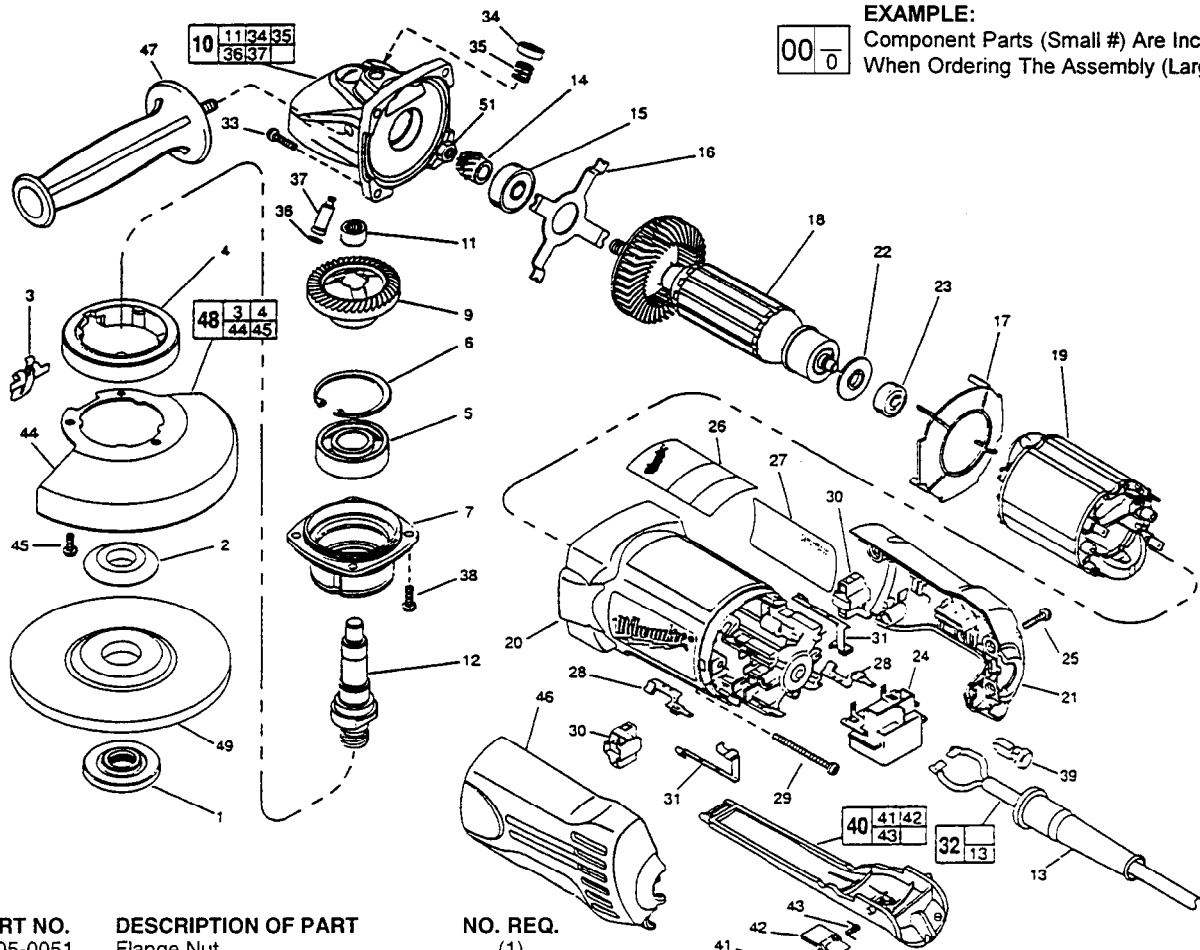




SERVICE PARTS LIST

BULLETIN NO.
54-38-1251

SPECIFY CATALOG NO. AND SERIAL NO. WHEN ORDERING PARTS		REVISED BULLETIN	DATE
5" ANGLE GRINDER		54-38-1250	Aug. '98
CATALOG NO. 6152-02	STARTING SERIAL NUMBER	920B	
WIRING INSTRUCTION			



EXAMPLE:

00	0
----	---

 Component Parts (Small #) Are Included When Ordering The Assembly (Large #).

FIG.	PART NO.	DESCRIPTION OF PART	NO. REQ.
	1	Flange Nut	(1)
★	2	Flange	(1)
	3	Lock Lever	(1)
	4	Spacer	(1)
	5	Ball Bearing	(1)
	6	Retaining Ring - Internal	(1)
	7	Spindle Hub	(1)
	9	P.M. Gear	(1)
	10	Gear Case Assembly	(1)
	11	Needle Bearing	(1)
	12	Spindle	(1)
	13	Cord Protector	(1)
	14	Pinion Gear	(1)
★	15	Ball Bearing	(1)
	16	Bearing Retainer Plate	(1)
	17	Baffle	(1)
★	18	Armature	(1)
★	19	Field	(1)
	20	Motor Housing	(1)
	21	Right Cover	(1)
	22	Commutator Insulator	(1)
	23	Ball Bearing	(1)
	24	Switch	(1)
	25	6-19 x 7/8" Pan Hd. Plastite T-15	(4)
★	26	Service Nameplate Kit	(1)
★	27	Warning Label	(1)
	28	Brush Terminal	(2)
★	29	6-19 x 3-1/4" Pan Hd. Sit. Plast. T-15	(2)
	30	Brush Holder Assy. (Incl. Carbon Brush)	(2)
	31	Switch Terminal	(2)
	32	Cord Set Assembly	(1)
	33	8-16 x 1" Pan Hd. Sit. Plast. T-20	(4)
	34	Cap	(1)
	35	Compression Spring	(1)

FIG.	PART NO.	DESCRIPTION OF PART	NO. REQ.
	36	34-40-4300 O-Ring	(1)
	37	44-60-0845 Lock Pin	(1)
	38	06-82-5316 8-32 x 1/2" Pan Hd. Sit. Tapt. T-20	(4)
	39	31-53-0112 Plug	(1)
	40	31-92-0320 Paddle Assembly	(1)
	41	06-65-1915 Pin	(1)
	42	42-42-0390 Lock-Off Button	(1)
	43	40-50-8750 Torsion Spring	(1)
	44	28-41-1025 Hood	(1)
	45	06-82-7251 8-16 x 3/8" Pan Hd. Sit. Plast. T-20	(3)
	46	31-15-0455 Left Cover	(1)
	47	49-15-0310 Side Handle	(1)
	48	49-12-0366 Guard Assembly	(1)
	49	5" Disc - Select From Catalog	(1)
	51	06-55-3850 10-32 Hex Nut	(1)
		49-96-7205 Spanner Wrench	(1)

FIG. LUBRICATION:
 9,14 Type "O" Grease, No. 49-08-4200, Must Be Applied To All Gear Teeth.
 10 18-21 Grams Type "O" Grease, No. 49-08-4200.

FIG. NOTES:
 7 Position The Spindle Hub With The Side That Has The Word "Back" Orientated Toward The Rear Of The Tool.
 11 Press .09" Below Casting Surface.
 32 Tuck All Cord Leads Away From Vent Openings.
 51 Torque To 25-35 In./Lbs.