



# SERVICE PARTS LIST

**BULLETIN NO.**  
**55-38-3701**

SPECIFY CATALOG NO. AND SERIAL NO. WHEN ORDERING PARTS		REVISED BULLETIN 55-38-3700	DATE Nov. 2000
115mm SUPER MAG GRINDER		WIRING INSTRUCTION	
CATALOG NO. 6153-50	STARTING SERIAL NUMBER 906B		

EXAMPLE: 

00	0
----	---

Component Parts (Small #)  
Are Included When Ordering  
The Assembly (Large #).

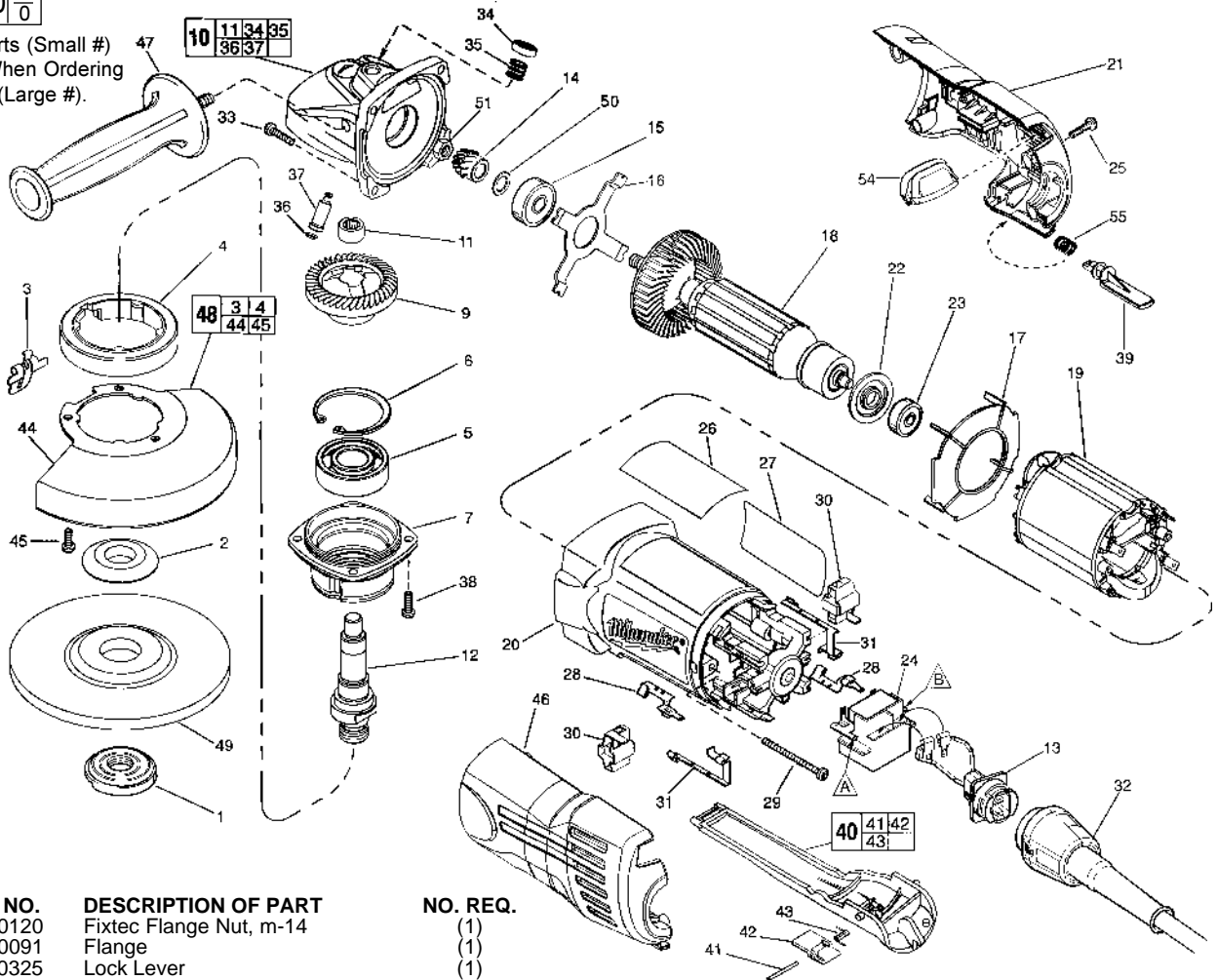


FIG.	PART NO.	DESCRIPTION OF PART	NO. REQ.
	1	05-59-0120	(1)
	2	49-05-0091	(1)
	3	44-20-0325	(1)
	4	45-36-1551	(1)
	5	02-04-1745	(1)
	6	34-80-2960	(1)
	7	28-52-0222	(1)
	9	32-05-1310	(1)
★	10	25-14-2351	(1)
	11	02-50-2423	(1)
	12	38-50-6065	(1)
	13	22-56-0691	(1)
	14	32-60-1310	(1)
★	15	02-04-0852	(1)
	16	44-66-5345	(1)
	17	42-14-0400	(1)
	18	16-04-2005	(1)
	19	18-04-2005	(1)
	20	31-50-1100	(1)
	21	31-44-0660	(1)
	22	23-16-0100	(1)
	23	02-04-2080	(1)
	24	23-66-2407	(1)
	25	06-82-7271	(4)
	26	-----	(1)
	27	10-15-6148	(1)
	28	23-74-1206	(2)
	29	06-82-7421	(2)
	30	22-20-0910	(2)
	31	23-74-1201	(2)
	32	48-76-5012	(1)
	32	22-64-0684	(1)
	33	06-82-7326	(4)
	34	31-12-0205	(1)
	35	40-50-8650	(1)
	36	34-40-4300	(1)
	37	44-60-0845	(1)
	38	06-82-5316	(4)
	39	42-42-0030	(1)

FIG.	PART NO.	DESCRIPTION OF PART	NO. REQ.
	40	31-92-0320	(1)
	41	06-65-1915	(1)
	42	42-42-0390	(1)
	43	40-50-8750	(1)
	44	28-41-1020	(1)
	45	06-82-7251	(3)
	46	31-44-0665	(1)
	47	49-15-0310	(1)
	48	49-12-0365	(1)
	49	-----	(1)
★	50	45-14-0280	(1)
	51	06-55-3850	(1)
	54	31-53-0150	(1)
	55	40-50-0921	(1)
		49-96-7205	(1)

**FIG. LUBRICATION:**  
9,14 Type "Y" Grease, No. 49-08-5270, Must Be Applied To All Gear Teeth.  
10 9-12 Grams Type "Y" Grease, No. 49-08-5270.

**FIG. NOTES:**  
7 Position The Spindle Hub With The Side That Has The Word "Back" Orientated Toward The Rear Of The Tool.  
11 Press 2.3mm Below Casting Surface With Lettering Readable After Assembly.  
32 Blade Housing Leads Are Interchangeable On Switch Connections.  
51 Torque To 2.85-4.0 Nm.