



# SERVICE PARTS LIST

**BULLETIN NO.**  
54-38-1842

|  |             |   |           |
|--|-------------|---|-----------|
| SPECIFY CATALOG NO. AND SERIAL NO. WHEN ORDERING PARTS |             | REVISED BULLETIN                        | DATE      |
| <b>6" ANGLE GRINDER with SLIDE SWITCH</b>              |             | 54-38-1841                              | Nov. 2010 |
| CATALOG NO. <b>6160-33</b>                             |             | WIRING INSTRUCTION<br><b>See Page 3</b> |           |
| STARTING SERIAL NUMBER                                 | <b>B76C</b> |   |           |

★ = Part number change from previous service parts list.

| FIG. | PART NO.   | DESCRIPTION OF PART        | NO. REQ. |
|------|------------|----------------------------|----------|
| 1    | 05-55-0620 | M5 Hex Nut                 | (1)      |
| 2    | 05-88-1100 | M3 x 10 Pan Hd. Screw      | (2)      |
| 3    | 05-88-1210 | M4 x 14 Pan Hd. T-20 Screw | (4)      |
| 4    | 05-88-1255 | M4 x 22 Pan Hd. T-20 Screw | (8)      |
| 5    | 05-88-1280 | M4 x 10 Pan Hd. T-20 Screw | (2)      |
| 6    | 05-88-1290 | M4 x 76 T-20 Screw         | (2)      |
| 7    | 05-90-0225 | M4 Lock Washer             | (6)      |
| 9    | 10-15-1230 | Warning Label              | (1)      |

Functionally check Spindle Lock mechanism. Spindle Lock Pin (43) must return briskly when released from engagement in Gear (46).

**NOTE:** Torque Armature Nut (1) to 47 in/lbs, 55 kg/cm.

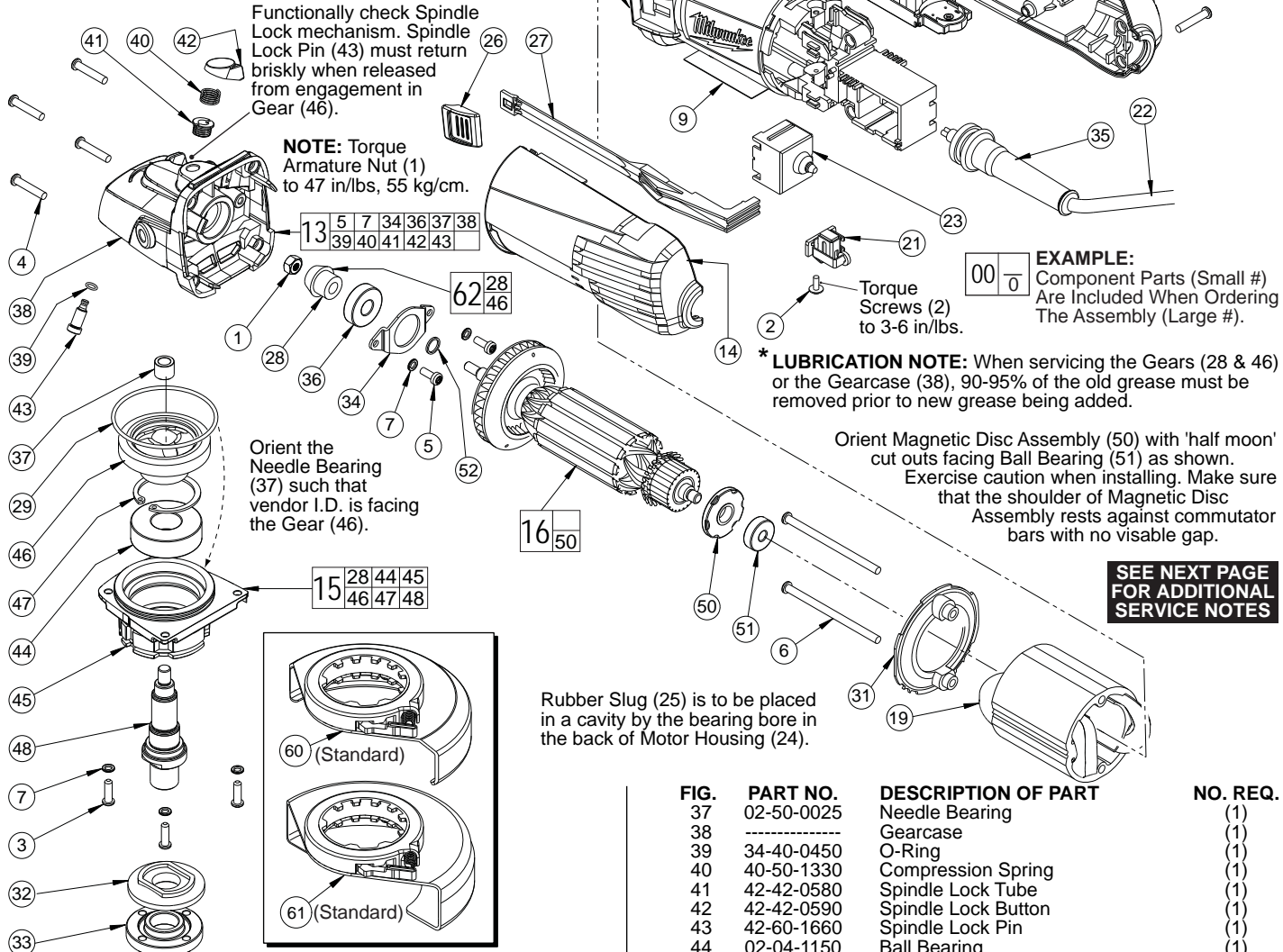
**EXAMPLE:** Component Parts (Small #) Are Included When Ordering The Assembly (Large #).

00 0

**\* LUBRICATION NOTE:** When servicing the Gears (28 & 46) or the Gearcase (38), 90-95% of the old grease must be removed prior to new grease being added.

Orient Magnetic Disc Assembly (50) with 'half moon' cut outs facing Ball Bearing (51) as shown. Exercise caution when installing. Make sure that the shoulder of Magnetic Disc Assembly rests against commutator bars with no visible gap.

**SEE NEXT PAGE FOR ADDITIONAL SERVICE NOTES**



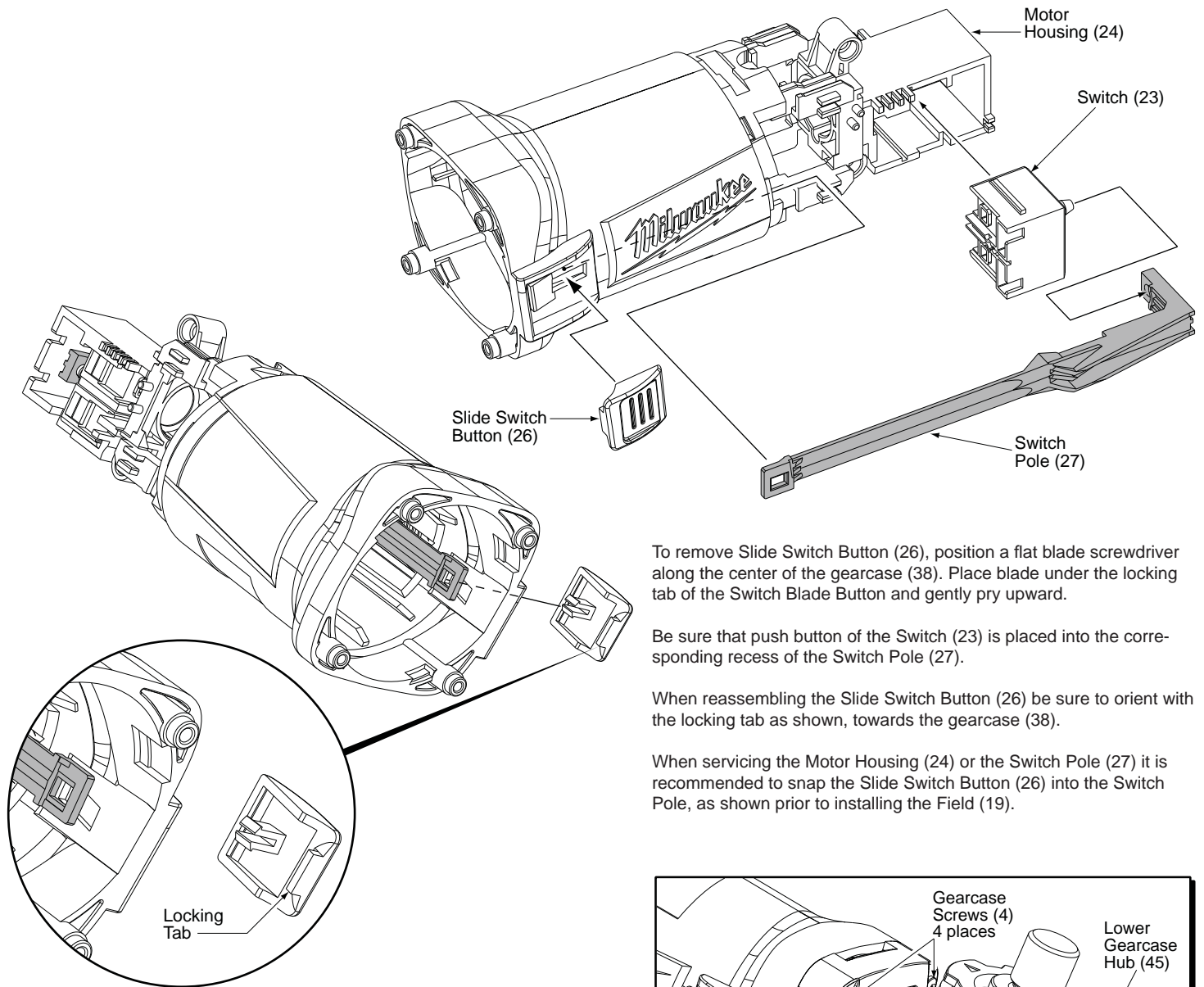
| FIG. | PART NO.   | DESCRIPTION OF PART       | NO. REQ. |
|------|------------|---------------------------|----------|
| 10   | 12-20-6116 | Service Nameplate         | (1)      |
| 13   | 14-29-0312 | Gearcase Assembly         | (1)      |
| 14   | 14-34-0720 | Rear Handle Assembly      | (1)      |
| ★ 15 | 14-73-0411 | Spindle/Hub Assembly      | (1)      |
| 16   | 16-10-7010 | Service Armature Assembly | (1)      |
| 19   | 18-07-2305 | Service Field             | (1)      |
| 20   | 22-09-1735 | Module Assembly           | (1)      |
| 21   | 22-22-1560 | Carbon Brush Assembly     | (2)      |
| 22   | 22-64-2020 | Cord                      | (1)      |
| 23   | 23-66-2665 | Switch                    | (1)      |
| 24   | 31-50-3370 | Motor Housing             | (1)      |
| 25   | 31-53-0240 | Rubber Slug               | (1)      |
| 26   | 31-92-0430 | Slide Switch Button       | (1)      |
| 27   | 31-92-0470 | Switch Pole               | (1)      |
| ★ 28 | -----      | Bevel Pinion              | (1)      |
| 29   | 34-40-0180 | O-Ring                    | (1)      |
| 31   | 42-14-0490 | Fan Baffle                | (1)      |
| 32   | 43-34-0036 | Inner Disk Flange         | (1)      |
| 33   | 44-40-0035 | Outer Flange Nut          | (1)      |
| 34   | 44-66-0450 | Bearing Retainer          | (1)      |
| 35   | 44-76-0210 | Strain Relief             | (1)      |
| 36   | 02-04-0620 | Ball Bearing              | (1)      |

| FIG. | PART NO.   | DESCRIPTION OF PART              | NO. REQ. |
|------|------------|----------------------------------|----------|
| 37   | 02-50-0025 | Needle Bearing                   | (1)      |
| 38   | -----      | Gearcase                         | (1)      |
| 39   | 34-40-0450 | O-Ring                           | (1)      |
| 40   | 40-50-1330 | Compression Spring               | (1)      |
| 41   | 42-42-0580 | Spindle Lock Tube                | (1)      |
| 42   | 42-42-0590 | Spindle Lock Button              | (1)      |
| 43   | 42-60-1660 | Spindle Lock Pin                 | (1)      |
| 44   | 02-04-1150 | Ball Bearing                     | (1)      |
| 45   | 28-53-0410 | Lower Gearcase Hub               | (1)      |
| ★ 46 | -----      | Bevel Gear                       | (1)      |
| 47   | 34-80-2275 | Retaining Ring                   | (1)      |
| 48   | 38-50-1280 | Spindle                          | (1)      |
| 50   | 23-27-0110 | Magnetic Disc Assembly           | (1)      |
| 51   | 02-04-2110 | Ball Bearing                     | (1)      |
| 52   | 45-88-0406 | Washer                           | (1)      |
| 60   | 43-54-1080 | 6" T27 Guard Assembly (Standard) | (1)      |
| 61   | 43-54-1085 | 6" T1 Guard Assembly (Standard)  | (1)      |
| ★ 62 | 14-29-0025 | Gear Set                         | (1)      |
|      | 42-62-0100 | Side Handle (Not Shown)          | (1)      |
|      | 49-96-7215 | Spanner Wrench (Not Shown)       | (1)      |

**FIG. 28, 46 LUBRICATION** (\*See lubrication note above): Type "Y" Grease, No. 49-08-5270, Must Be Applied To All Gear Teeth.

29, 38 Lightly coat with grease O-Ring and bearing bore in Gearcase.

38 .3 -.4 Ounces (9-12 Grams) Type "Y" Grease, No. 49-08-5270.

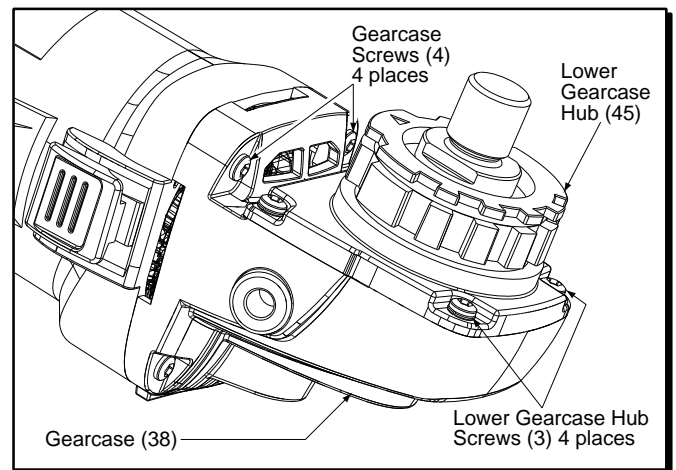


To remove Slide Switch Button (26), position a flat blade screwdriver along the center of the gearcase (38). Place blade under the locking tab of the Switch Blade Button and gently pry upward.

Be sure that push button of the Switch (23) is placed into the corresponding recess of the Switch Pole (27).

When reassembling the Slide Switch Button (26) be sure to orient with the locking tab as shown, towards the gearcase (38).

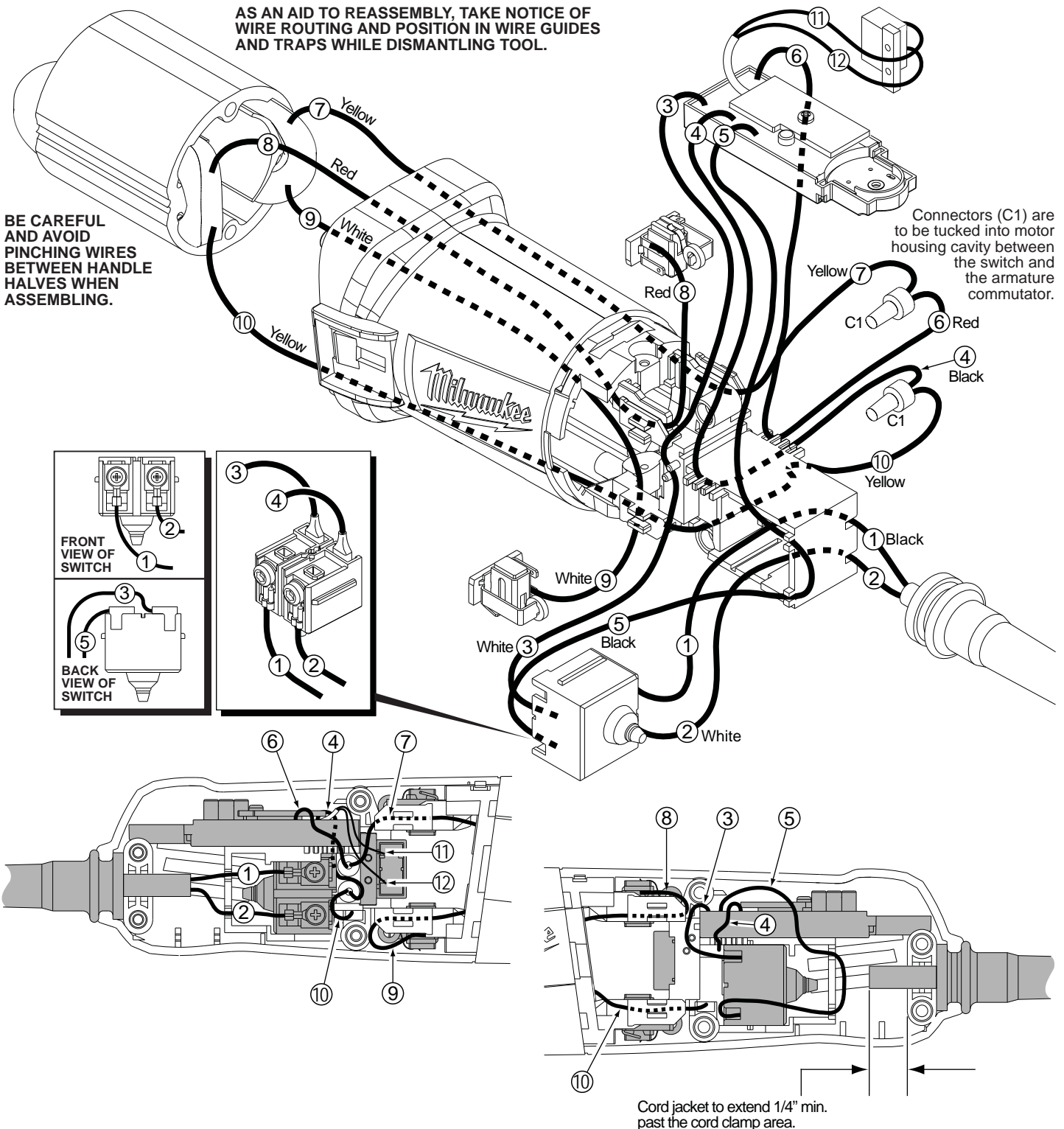
When servicing the Motor Housing (24) or the Switch Pole (27) it is recommended to snap the Slide Switch Button (26) into the Switch Pole, as shown prior to installing the Field (19).



When servicing the Gearcase (38), first remove the four Screws (3) and Lower Gearcase Hub (45) to prevent damage to the bottom two Screws (4) that secure the Gearcase.

AS AN AID TO REASSEMBLY, TAKE NOTICE OF WIRE ROUTING AND POSITION IN WIRE GUIDES AND TRAPS WHILE DISMANTLING TOOL.

BE CAREFUL AND AVOID PINCHING WIRES BETWEEN HANDLE HALVES WHEN ASSEMBLING.



Connectors (C1) are to be tucked into motor housing cavity between the switch and the armature commutator.

Cord jacket to extend 1/4" min. past the cord clamp area.

**WIRING SPECIFICATIONS**

| Wire No. | Wire Color | Origin or Part No. | Gauge | Length | Terminals, Connectors and End Wire Preparation |
|----------|------------|--------------------|-------|--------|--|
| 1        | Black      | 22-64-2020         | --    | --     | Component of Cord Set.                         |
| 2        | White      | 22-64-2020         | --    | --     | Component of Cord Set.                         |
| 3        | White      | 22-09-1725         | --    | --     | Component of PC Board.                         |
| 4        | Black      | 22-09-1725         | --    | --     | Component of PC Board.                         |
| 5        | Black      | 22-09-1725         | --    | --     | Component of PC Board.                         |
| 6        | Red        | 22-09-1725         | --    | --     | Component of PC Board.                         |
| 7        | Yellow     | 18-07-2305         | --    | --     | Component of Service Field.                    |
| 8        | Red        | 18-07-2305         | --    | --     | Component of Service Field.                    |
| 9        | White      | 18-07-2305         | --    | --     | Component of Service Field.                    |
| 10       | Yellow     | 18-07-2305         | --    | --     | Component of Service Field.                    |
| 11       | White      | 22-09-1725         | --    | --     | Component of PC Board.                         |
| 12       | White      | 22-09-1725         | --    | --     | Component of PC Board.                         |

BULK LEAD WIRE - BULLETIN 58-01-0003

**NOTE:**

All leads must be held to ± 1/16".  
All lead lengths are before stripping.

| TERMINAL DESCRIPTION  |            |       |
|-----------------------|------------|-------|
| Code                  | Part No.   | Qnty. |
|                       |            |       |
| CONNECTOR DESCRIPTION |            |       |
| C1                    | 22-56-0150 | 2     |