



# SERVICE PARTS LIST

**BULLETIN NO.  
54-40-6490**

SPECIFY CATALOG NO. AND SERIAL NO. WHEN ORDERING PARTS		REVISED BULLETIN	DATE
<b>10" MAGNUM MITER SAW</b>			Dec. '92
CATALOG NO. <b>6490</b>	STARTING SERIAL NO. <b>799-A</b>	WIRING INSTRUCTION <b>58-01-1350</b>	

00 0

**EXAMPLE:**  
Component Parts (Small #) Are Included  
When Ordering The Assembly (Large #).

FIG.	PART NO.	DESCRIPTION OF PART	NO. REQ.
2	02-02-2040	7/16" Steel Ball	(1)
3	02-04-0845	Ball Bearing	(2)
4	02-04-1229	Ball Bearing	(1)
5	02-04-2040	Ball Bearing	(1)
6	06-42-2400	Woodruff Key	(1)
7	06-55-1525	1/4"-20 Hex Nut	(1)
8	06-55-1985	5/16"-18 Hex Nut	(1)
9	06-55-2710	7/16"-14 Hex Nut	(1)
13	06-75-4000	5/16-18 x 1-3/8" Cap Screw	(7)
14	06-82-5270	6-32 x 1/4" Pan Hd. Slit. Tapt. T-15	(1)
15	06-82-5314	10-24 x 1/2" Pan Hd. Slit. Tapt. T-25	(2)
16	06-82-5338	1/4-20 x 1/2" Pan Hd. Slit. Tapt. T-30	(2)
17	06-82-5411	10-24 x 5/8" Pan Hd. Slit. Tapt. T-25	(20)
18	06-82-7212	4-20 x 1/4" Pan Hd. Plastite T-10	(2)
19	06-82-7226	6-19 x 5/16" Pan Hd. Slit. Plast. T-15	(1)
20	06-82-7270	8-16 x 5/8" Pan Hd. Slit. Plast. T-20	(12)
21	06-82-7453	8-16 x 2-1/4" Pan Hd. Slit. Plast. T-20	(2)
22	06-82-9024	10-24 x 1-3/4" Pan Hd. Slit. Tapt. T-25	(4)
23	06-83-3150	5/16-18 x 1/2" Hex Socket	(2)
24	06-83-3200	5/16-18 x 1" Set Screw	(1)
25	10-15-0230	Warning Label	(2)
26	12-20-0090	Service Nameplate Kit	(1)
27	16-70-0420	Armature	(1)
28	18-70-0420	Field	(1)
29	22-18-0387	Carbon Brush	(2)
30	22-20-0800	Brush Tube	(2)
30A	22-20-0802	Brush Tube Assembly	(2)
31	22-64-3210	Cord Set	(1)
32	23-66-2037	Switch Assembly	(1)
33	25-20-1319	Upper Guard Cover	(1)
34	28-06-1020	Base	(1)
35	28-06-1035	Table	(1)
36	28-14-2215	Upper Guard Gear Case	(1)
37	28-35-0010	Fence	(1)
38	28-90-0210	Pivot Support	(1)
39	31-44-1725	Handle Half	(1)
40	31-50-1010	Motor Housing	(1)
41	32-75-3350	Gear	(1)
42	34-40-1375	1-1/4" O-Ring	(1)
43	34-60-2560	Retaining Ring	(1)
44	38-50-5840	Spindle	(1)
45	40-50-8040	Spring	(1)
46	40-50-8160	Coil Spring	(2)
47	40-50-8170	Locking Spring	(1)
48	40-50-8180	Spring	(1)
49	40-50-8190	Retaining Spring	(2)
50	40-50-8520	Leaf Spring	(1)
51	42-12-0160	Axle	(1)
52	42-14-0350	Baffle	(1)
53	42-14-0355	Baffle	(1)
54	42-50-0240	Cam	(1)
55	42-92-0890	End Cover	(1)
57	42-96-0130	Bearing Cup	(1)
58	43-34-0720	Blade Flange	(2)
59	43-54-0695	Lower Guard	(1)
60	43-54-0700	Blade Screw Guard	(1)
61	43-62-1050	Locking Handle	(1)
62	43-72-0180	Spring Holder	(2)
64	44-10-0310	Locking Lever	(1)
67	44-20-0260	Detent Lock	(1)
69	44-60-1300	Lock Pin	(1)
70	44-66-5920	Locking Plate	(1)
71	44-66-5930	Kerf Plate	(1)
72	44-66-5945	Detent Lever Plate	(1)
73	44-72-0010	Pointer	(1)
74	44-76-0210	Cord Protector	(1)

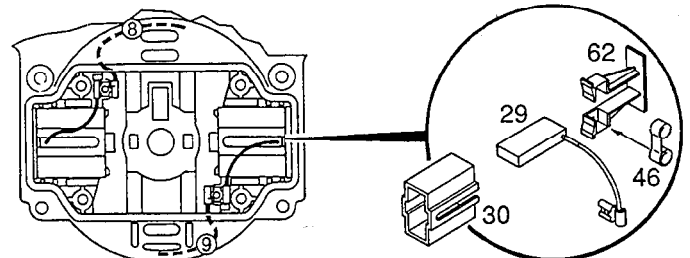
FIG.	PART NO.	DESCRIPTION OF PART	NO. REQ.
76	44-96-0130	Roller	(1)
77	45-04-0850	Shoulder Screw	(2)
78	45-04-0860	Blade Screw	(1)
79	45-08-0310	Table Shaft	(1)
80	45-60-0530	Spring Support	(1)
81	45-76-0330	Dust Tube	(1)
82	45-88-8255	Washer	(1)
84	22-84-0850	Fan	(1)
85	23-74-1150	Terminal	(2)
	06-97-1800	Switch Washer	(6)
	49-96-6200	Box Wrench	(1)

### FIG. LUBRICATION

- 35** Apply .30 Oz. Type "L" Grease, No. 49-08-4230, To The Inside Diameter Of Support Column Of Table.
- 79,34** Apply .12 Oz. Type "L" Grease, No. 49-08-4230, To The Groove Of Table Shaft. Also Apply A Thin Film Of "L" Grease To The O.D. Of Table Shaft And To The I.D. Of The Center Bore Of Base Prior To Assembly.
- 36,51** Apply .06 Oz. Type "L" Grease, No. 49-08-4230, To The (2) .125 Wide Grooves Of Axle. Also Apply A Thin Film To The O.D. Of Axle (Not Between The (2) Locating Grooves), And To The I.D. Of The (2) Pivoting Hubs Of The Upper Guard / Gear Case Prior To Assembly.
- 33,51** Apply A Dab Of Type "L" Grease, No. 49-08-4230, To The Cover End Of Axle, Prior To Assembly Of Upper Guard Cover.
- 36** Place .50 Oz. Type "O" Grease, No. 49-08-4200, In The Pinion Pocket Of Upper Guard / Gear Case.

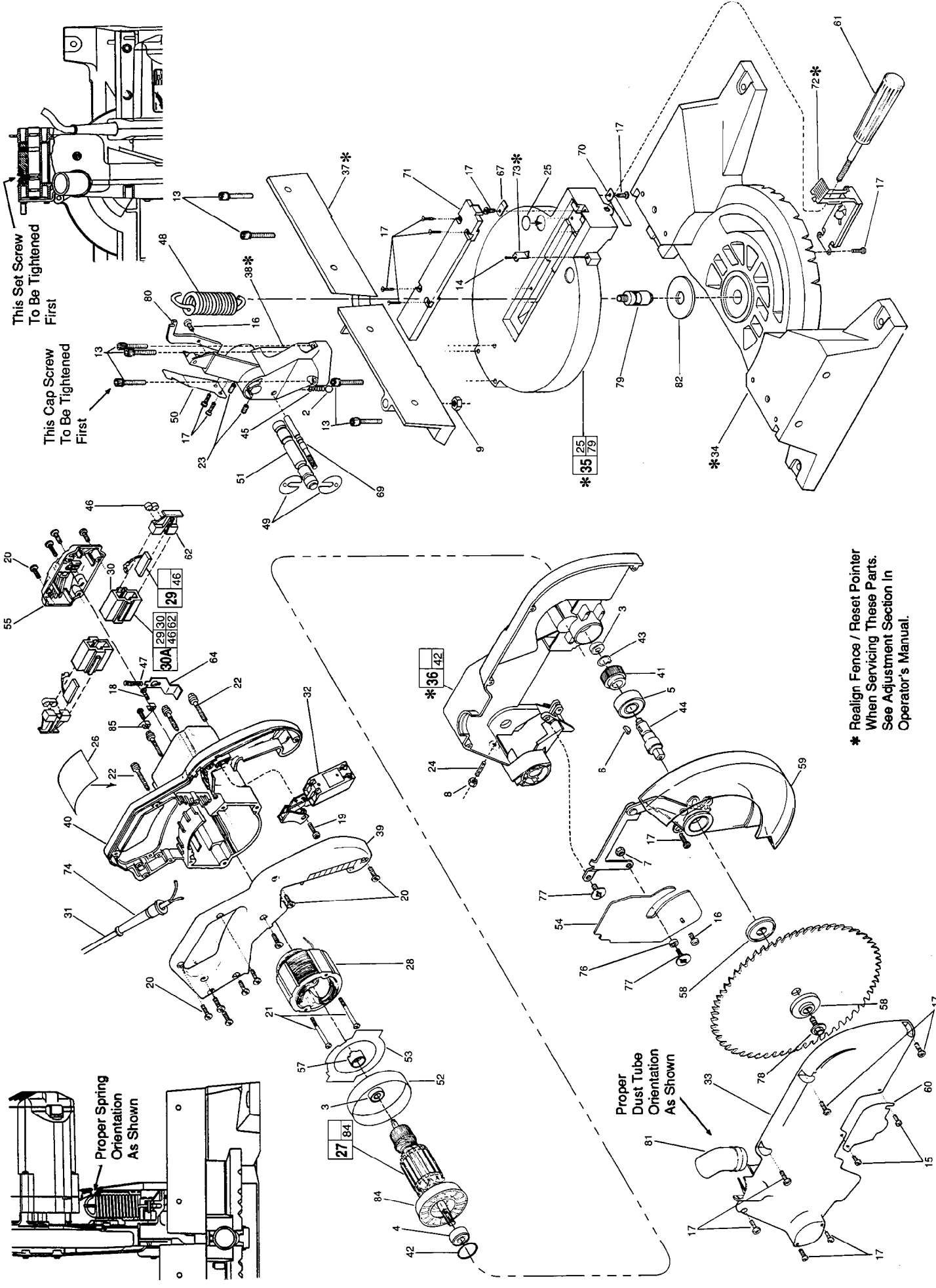
### FIG. NOTES:

- 23,33** Tighten 5/16" Set Screws Only After Assembly Of Upper Guard Cover. Loosen Set Screws before disassembly of Upper Guard Cover.
- 36,54,59** Adjust Cam Until Top Edge Of Lower Guard Is In Line  $\pm .06$  With .030 High Rib On Upper Guard / Gear Case.
- 43** Assemble Retaining Ring With The Concave Bow Of The Ring Toward The Gear.
- 27,40,57** Place Bearing Cup Into Motor Housing Prior To Assembling Onto Armature.
- 49** Retaining Springs Relative Orientation To Be 180° Apart-Dimples To Engage Slots.
- 3** Ball Bearing (On The Commutator End Of Armature)-Seal Toward Commutator. Ball Bearing (On Fan End Of Armature)-Seal Toward Gear.
- 79** Apply Red Locking Sealant To Two Threads Of Table Shaft Prior To Assembly. Torque To 360  $\pm 25$  In./Lbs.



- 46,62** Coil Spring Must Be Oriented In Spring Holder Such That The Saddle Of The Spring Is Facing The Open End Of The Spring Holder.
- 30,62** Spring Holder Must Be Oriented In Brush Tube Such That The Open End Of The Spring Cavity Is Facing The Shunt Slot In Brush Tube.

**MILWAUKEE ELECTRIC TOOL CORPORATION**  
13135 W. LISBON RD., BROOKFIELD, WI 53005



This Set Screw To Be Tightened First

This Cap Screw To Be Tightened First

Proper Spring Orientation As Shown

Proper Dust Tube Orientation As Shown

\* Realign Fence / Reset Pointer When Servicing These Parts. See Adjustment Section in Operator's Manual.