



# SERVICE PARTS LIST

**BUL. 54-40-4005**

## SAWZALL

REVISED BUL 54-40-4004 DATE Oct. '69

**Catalog No. 6500**

Starting Serial No. **73-169844**

WIRING INSTR. **58-01-0170**

Both Model and Serial No. must be furnished to obtain correct parts.

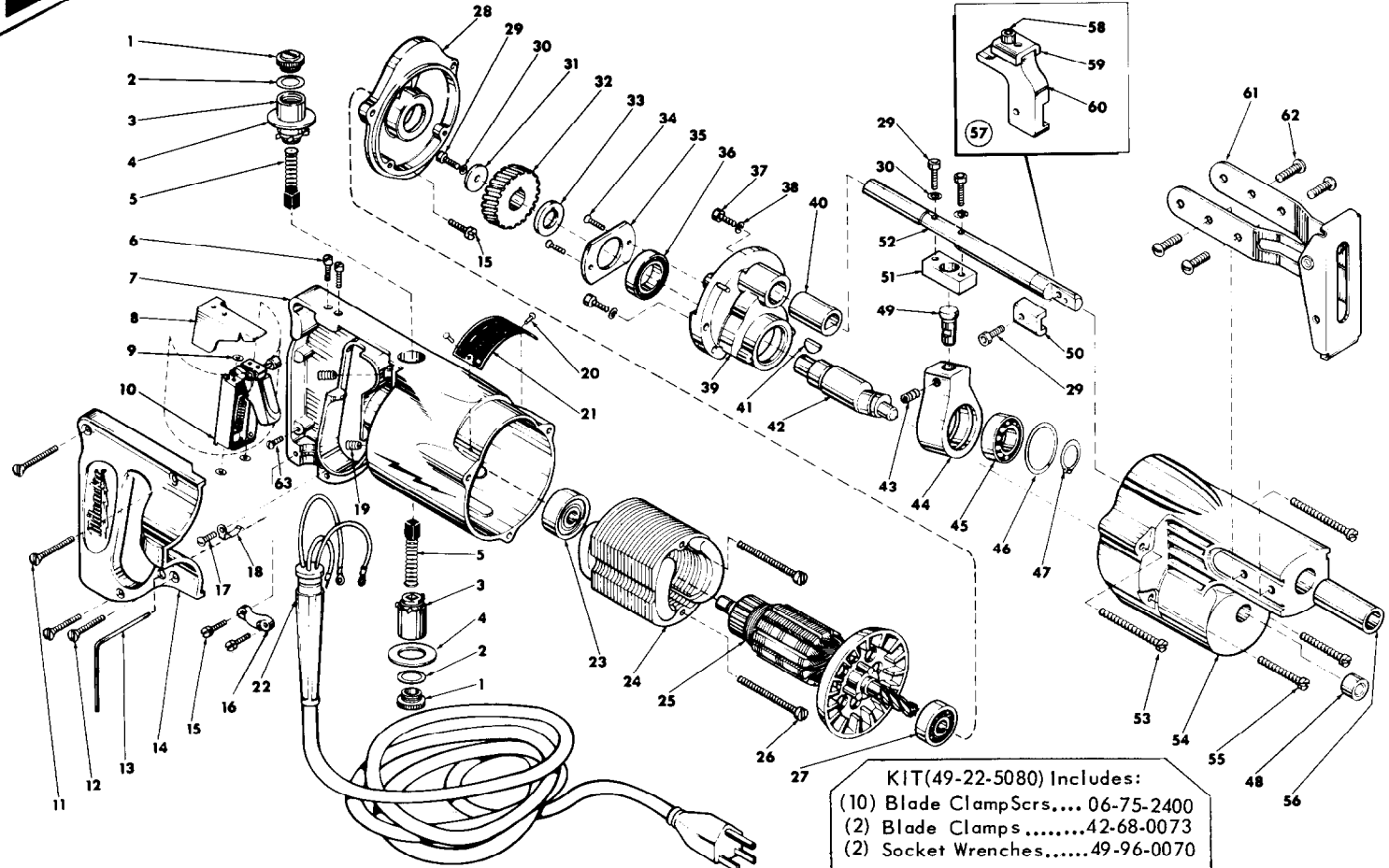


FIG.	PART NO.	DESCRIPTION OF PART	NO. REQ.
1	23-44-0060	Brush Retaining Screw	(2)
2	23-86-0050	Washer	(2)
3	22-22-0080	Brush Holder	(2)
4	23-86-0110	Washer	(2)
5	22-18-0100	Carbon Brush	(2)
6	06-81-5800	6-32x5/16 Fil.Hd. Sem	(2)
7	28-50-9483	Motor Housing (Includes Fig. Nos. 11, 12 and 14)	(1)
8	42-14-0090	Wire Baffle	(1)
9	06-97-1800	Lockwasher	(4)
10	23-66-0230	Switch	(1)
11	06-81-3750	8-32x1 Oval Head Screw	(2)
12	06-81-3700	8-32x7/8 Oval Head Screw	(2)
13	49-96-0070	Socket Screw Wrench	(1)
14	28-20-3151	Switch Cover Plate	(1)
15	06-81-6150	8-32x1/2 Fil.Hd. Sem	(3)
16	28-17-0400	Clamp Strap	(1)
17	06-81-8650	6-32x1/4 Rd.Hd. Sem	(1)
18	42-70-0050	Spring Clip	(1)
19	06-83-2650	1/4-20x3/8 Knrl. Set Screw	(2)
20	06-77-0625	6x1/4 Rd. Driv-In Screw	(2)
21	12-98-3000	Nameplate	(1)
22	22-64-0170	Cord Set	(1)
23	02-04-0970	Ball Bearing	(1)
24	18-42-1040	115 Volt Field	(1)
25	16-42-1170	115 Volt Armature	(1)
26	06-81-6600	8-32x1-3/4 Fil.Hd. Sem	(2)
27	02-04-0940	Ball Bearing	(1)
28	28-28-0341	Diaphragm	(1)
29	06-75-2400	10-32x1/2 Skt. Hd. Screw	(4)
30	06-97-3400	Lock Washer	(3)
31	45-88-0180	Retaining Washer	(1)
32	32-40-1101	Intermediate Gear	(1)

FIG.	PART NO.	DESCRIPTION OF PART	NO. REQ.
33	45-36-0121	Gear Spacer	(1)
34	06-81-2500	6-32x3/8 Flat Hd. Screw	(2)
35	44-86-0090	Bearing Retainer	(1)
36	02-04-1510	Ball Bearing	(1)
37	06-81-0900	8-32x7/16 Fil.Hd. Screw	(2)
38	06-97-3200	Lock Washer	(2)
39	28-72-1001	Bearing Plate	(1)
40	42-24-0101	Spindle Bearing	(1)
41	06-42-1200	Woodruff Key	(1)
42	36-92-0601	Wobble Shaft	(1)
43	06-83-2645	1/4-20x3/8 Hds. Set Screw	(1)
44	28-72-9001	Wobble Plate	(1)
45	02-04-1510	Ball Bearing	(1)
46	34-80-2300	Retaining Ring	(1)
47	34-60-1200	Retaining Ring	(1)
48	02-50-1640	Needle Bearing	(1)
49	45-58-0050	Ball End Stud	(1)
50	42-68-0073	Blade Clamp	(1)
51	42-28-0050	Spindle Block	(1)
52	38-50-2002	Spindle	(1)
53	06-81-6650	8-32x1-3/4 Fil.Hd. Sem	(2)
54	28-14-0571	Gear Case	(1)
55	06-81-6500	8-32x1-3/8 Fil.Hd. Sem	(2)
56	42-24-0091	Spindle Bearing	(1)
57	48-03-2000	Offset Blade Adapter Assy. (Includes Fig. Nos. 58, 59 and 60)	(1)
58	06-75-2400	10-32x1/2 Skt. Hd. Screw	(1)
59	42-68-0073	Blade Clamp	(1)
60	28-02-0051	Offset Blade Adapter	(1)
61	45-16-0055	Pivot Shoe Assembly	(1)
62	06-81-9525	10-24x1/2 Truss Head Sem	(4)
63	06-81-8625	6-32x1/4 Rd.Hd. Bronze	(1)

**KIT(49-22-5080) Includes:**  
 (10) Blade Clamp Screws..... 06-75-2400  
 (2) Blade Clamps..... 42-68-0073  
 (2) Socket Wrenches..... 49-96-0070