

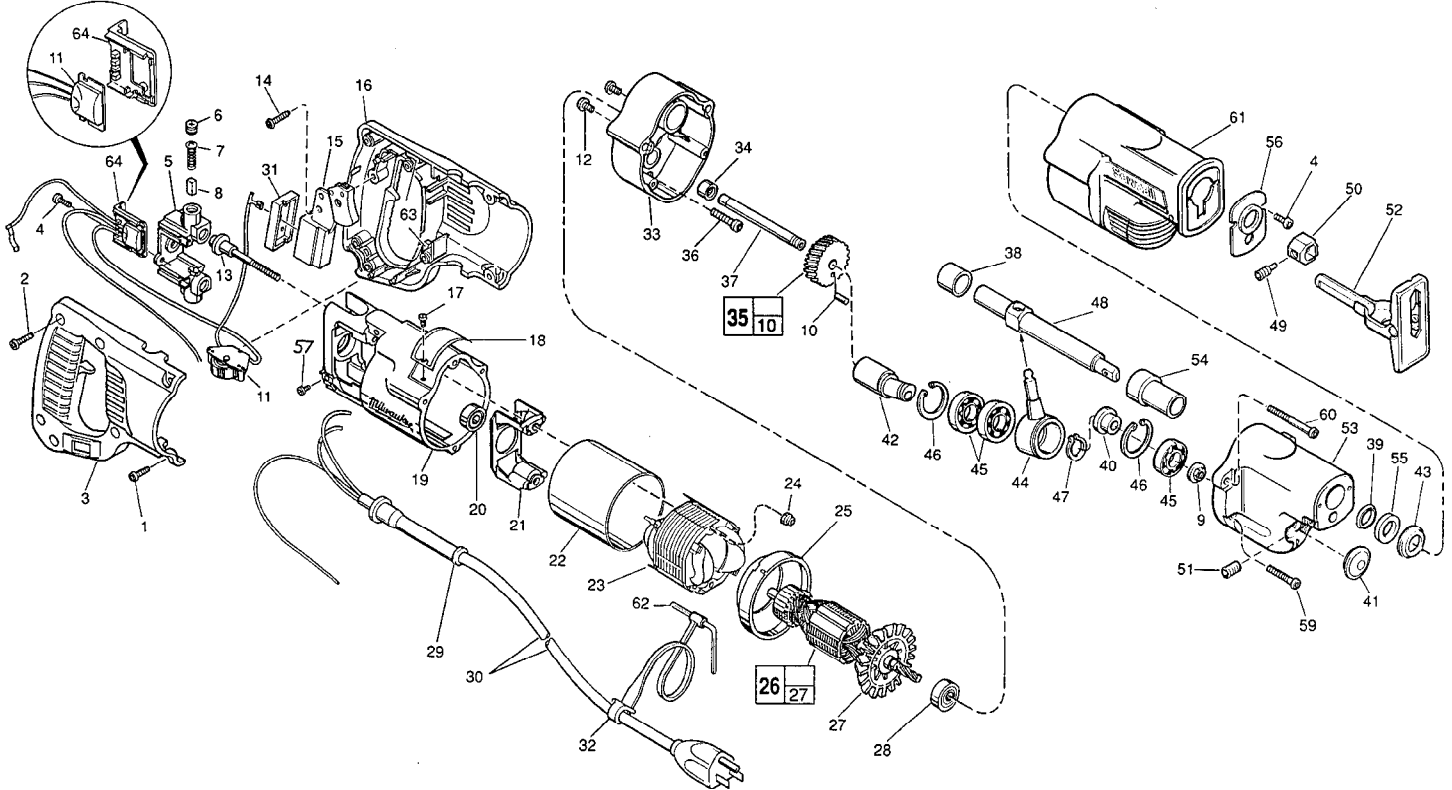


SERVICE PARTS LIST

BULLETIN NO.
54-40-0726

| | | | |
|---|----------------------------|---------------------------|-------------|
| SPECIFY CATALOG NO. AND SERIAL NO. WHEN ORDERING PARTS | | REVISED BULLETIN | DATE |
| TRIGGER SPEED CONTROL SAWZALL | | 54-40-0725 | Oct. '95 |
| CATALOG NO. | STARTING SERIAL NO. | WIRING INSTRUCTION | |
| 6518 | 859B | 58-01-0780 | |

EXAMPLE:
Component Parts (Small #)
Are Included When Ordering
The Assembly (Large #).



| FIG. | PART NO. | DESCRIPTION OF PART | NO. REQ. | FIG. | PART NO. | DESCRIPTION OF PART | NO. REQ. |
|------|------------|-------------------------------------|----------|------|------------|--|----------|
| 1 | 06-82-5316 | 8-32 x 1/2" Slot Pan Hd. T-20 | (4) | 36 | 06-82-5320 | 8-32 x 5/8" Pan Hd. Slit. Taptite T-20 | (1) |
| 2 | 06-82-7270 | 8-16 x 5/8" Pan Hd. Plastite T-20 | (5) | 37 | 42-12-0180 | Axle-Wobble Shaft | (1) |
| 3 | 31-44-1651 | Right Handle Half | (1) | 38 | 42-24-0620 | Rear Spindle Bearing | (1) |
| 4 | 06-95-0075 | 6-32 x 3/8" Truss Hd. Taptite Screw | (4) | 39 | 45-06-0475 | Poly-Pak Seal | (1) |
| 5 | 22-22-1380 | Brush Holder Assembly | (1) | 40 | 45-36-1450 | Spacer | (1) |
| 6 | 23-44-0190 | Brush Retaining Cap | (2) | 41 | 42-52-0380 | Bearing Cap | (1) |
| 7 | 23-52-0160 | Brush Spring | (2) | 42 | 36-92-0740 | Wobble Shaft | (1) |
| 8 | 22-16-0275 | Carbon Brush | (2) | 43 | 44-86-0595 | Seal Cup | (1) |
| 9 | 06-55-3790 | 5/16-24 Spinlock Hex Nut | (1) | 44 | 30-72-0111 | Wobble Plate | (1) |
| 10 | 06-65-0606 | 3/16" x 1/2" Drivelok Pin | (1) | 45 | 02-04-1510 | Ball Bearing | (3) |
| 11 | 14-20-3020 | Dial Assembly | (1) | 46 | 34-80-2600 | Internal Retaining Ring | (2) |
| 12 | 06-82-7252 | 8-32 x 3/8" Pan Hd. Taptite T-20 | (2) | 47 | 34-60-1315 | External Retaining Ring | (1) |
| 13 | 06-81-1060 | 8-16 x 2-1/4 Field Bolt | (2) | 48 | 38-50-6035 | Reciprocating Spindle | (1) |
| 14 | 06-82-7270 | 8-16 x 5/8" Pan Hd. Plastite T-20 | (1) | 49 | 06-83-2970 | Blade Clamp Screw | (1) |
| 15 | 23-66-1490 | Switch | (1) | 50 | 42-68-0675 | Blade Clamp | (1) |
| 16 | 31-44-1656 | Left Handle Half | (1) | 51 | 06-83-3150 | 5/16-18 x 1/2" Hex Socket Hd. Set Screw | (1) |
| 17 | 06-72-1720 | Nameplate Rivet | (2) | 52 | 45-16-0615 | Pivot Shoe Assembly | (1) |
| 18 | 12-99-1730 | Service Nameplate | (1) | 53 | 28-14-2180 | Gear Case | (1) |
| 19 | 28-50-6220 | Motor Housing | (1) | 54 | 42-24-0615 | Forward Spindle Bearing | (1) |
| 20 | 02-04-0845 | Ball Bearing | (1) | 55 | 45-06-0500 | Felt Seal | (1) |
| 21 | 31-55-0190 | Coil Shield | (1) | 56 | 44-86-0590 | Seal Retainer | (1) |
| 22 | 23-16-0456 | Field Insulator | (1) | 57 | 06-95-5150 | 6-32 x 1/4" Hex Hd. Taptite Sems | (1) |
| 23 | 18-31-0600 | 120 V. Field | (1) | 59 | 06-82-5346 | 8-32 x 3/4" Pan Hd. Taptite T-20 | (2) |
| 24 | 06-57-2975 | 8-32 Flexlock Hex Nut | (2) | 60 | 06-82-5516 | 8-32 x 2-3/8" Pan Hd. Slit. Taptite T-20 | (2) |
| 25 | 31-05-0050 | Baffle | (1) | 61 | 45-12-0510 | Gear Case Insulator | (1) |
| ★ 26 | 16-30-0535 | 120 V. Armature | (1) | 62 | 49-96-0070 | 5/32" Socket Wrench | (1) |
| 27 | 22-84-0531 | Fan Assembly | (1) | 63 | 14-46-1001 | Foam Slug Kit (10 Slugs) | (2) |
| 28 | 02-04-0911 | Ball Bearing | (1) | 64 | 43-72-0175 | Heat Sink Holder | (1) |
| 29 | 44-76-0210 | Cord Protector | (1) | | | | |
| 30 | 22-64-3190 | Cord Set | (1) | | | | |
| 31 | 45-12-0470 | Dust Shield | (1) | | | | |
| 32 | 48-66-4080 | Key Holder | (1) | | | | |
| 33 | 28-28-2080 | Diaphragm | (1) | | | | |
| 34 | 02-50-2150 | Needle Bearing | (1) | | | | |
| ★ 35 | 32-40-2218 | Intermediate Gear Assembly | (1) | | | | |

**SEE REVERSE SIDE FOR
IMPORTANT SERVICE NOTES**

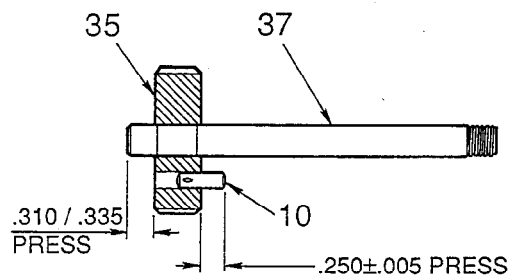
MILWAUKEE ELECTRIC TOOL CORPORATION
13135 W. LISBON RD., BROOKFIELD, WI 53005

FIG. LUBRICATION

- 33 Place 3/4 oz. of type "L" grease, No. 49-08-4175, in diaphragm cavity near needle bearing.
- 53 Place 2-3/4 oz. of type "L" grease, No. 49-08-4175, in mechanism cavity of gear case.
- 55 Saturate with bushing oil before assembly.

FIG. NOTES

- 9,10,35,37 Axle should extend .285 min. beyond intermediate gear after seating torque to spinlock hex nut (not shown) is applied.



Pin is to be pressed into gear as shown.

- 20 Seal side faces commutator.
- 20,28,45 Press bearings to shaft shoulders.
- 33,38 Press rear spindle bearing flush to .030 below bearing boss of diaphragm.
- 34 Press bearing flush ($\pm .005$) to diaphragm surface.
- 39 O-ring of seal towards rear of tool.
- 45,46 Retaining rings are to be installed with the beveled side away from the bearings.
- 53,54 Press forward spindle bearing flush to .030 below bearing boss of gear case.