



SERVICE PARTS LIST

BULLETIN NO.
55-40-7550

SPECIFY CATALOG NO. AND SERIAL NO. WHEN ORDERING PARTS		REVISED BULLETIN	DATE
CORDED HATCHET SAWZALL®			Mar. 2004
CATALOG NO.	6524-51	STARTING SERIAL NO.	A44A
		WIRING INSTRUCTION	58-03-0095

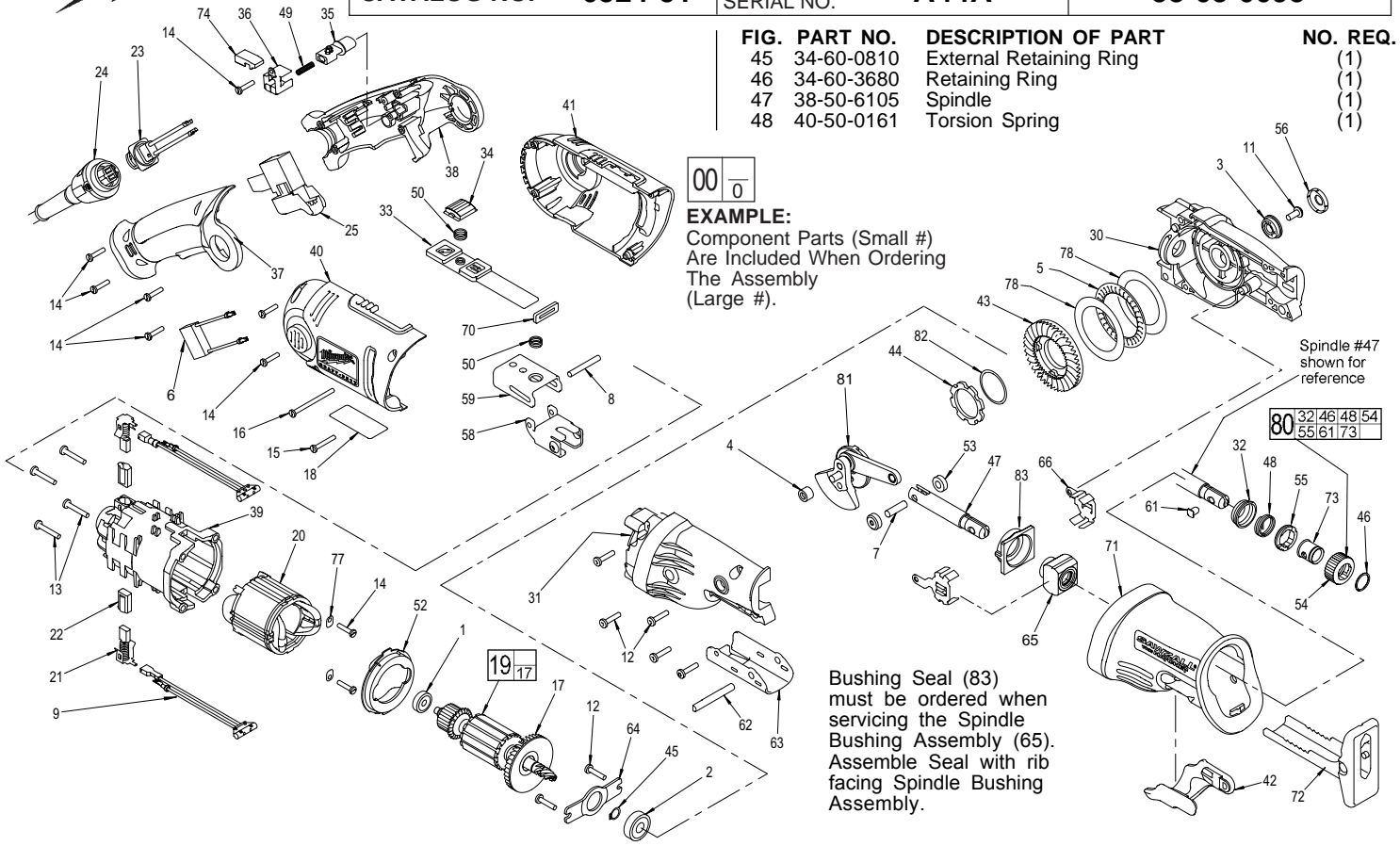


FIG.	PART NO.	DESCRIPTION OF PART	NO. REQ.	FIG.	PART NO.	DESCRIPTION OF PART	NO. REQ.
1	02-04-0645	Ball Bearing	(1)	49	40-50-0760	Compression Spring	(1)
2	02-04-1020	Ball Bearing	(1)	50	40-50-0766	Compression Spring	(2)
3	02-04-1900	Ball Bearing, Flanged	(1)	52	42-14-0455	Baffle	(1)
4	02-50-1615	Needle Bearing	(1)	53	42-40-1011	Spindle Pin Bushing	(2)
5	02-80-5000	Thrust Needle Bearing	(1)	54	42-50-0076	Front Cam	(1)
6	22-33-0550	Suppressor	(1)	55	42-50-0077	Rear Cam	(1)
7	06-65-2995	Pin	(1)	56	42-52-0190	Bearing Cap	(1)
8	06-65-3005	Orbit Control Pin	(1)	58	43-56-0628	Orbit Slot	(1)
9	22-33-0560	RFI Choke	(2)	59	43-56-0685	Orbit Control Link	(1)
11	06-82-2000	8-32 x .50 Rd. Wash. Hd. Tapt. T-20 w/ blue patch	(1)	61	44-60-0626	Lock Pin	(1)
12	06-82-5346	8-32 x .75 Pan Hd. Taptite T-20	(7)	62	44-60-1635	Shoe Pin	(1)
13	06-82-5362	8-32 x 1.00 Pan Hd. Taptite T-20	(4)	63	44-66-0891	Shoe Retainer	(1)
14	06-82-7261	6-19 x .687 Slotted Plastite T-15	(9)	64	44-66-5335	Bearing Retaining Plate	(1)
15	06-82-7276	6-19 x 1.00 Slotted Plastite T-15	(1)	65	44-86-0135	Spindle Bushing Assembly	(1)
16	06-82-7300	6-19 x 2.00 Slotted Plastite T-15	(1)	66	44-86-0115	Spindle Bushing Cage	(2)
17	22-84-0975	Fan	(1)	70	45-06-0375	Orbit Control Seal	(1)
18	12-20-6532	Service Nameplate Kit	(1)	71	45-12-0900	Gearcase Insulator	(1)
19	16-14-2225	Armature	(1)	72	45-16-0646	Shoe Assembly	(1)
20	18-04-2206	Field	(1)	73	45-22-0081	Sleeve	(1)
21	22-18-0040	Brush Assembly	(2)	74	45-24-0750	Slide Lock	(1)
22	22-20-0110	Brush Tube	(2)	77	45-88-0142	Motor Mount Washer	(2)
23	22-56-1105	Blade Housing Assembly	(1)	78	45-88-0530	Thrust Bearing Washer	(2)
24	48-76-5012	Quik-Lok Cord Set	(1)	80	14-46-1011	Steel Quik-Lok Blade Clamp Kit	(1)
25	23-66-2225	Switch	(1)	81	32-05-3335	Gear Linkage Assembly	(1)
30	28-14-2920	Left Gearcase Assembly	(1)	82	34-40-4565	O-Ring	(1)
31	28-14-2925	Right Gearcase Assembly	(1)	83	45-06-0196	Bushing Seal	(1)
32	31-15-0511	Spring Cover	(1)		23-94-3120	Leadwire Assembly-Blue (See 58-03-0095)	(1)
33	31-15-0625	Lock Slide Cover	(1)		23-94-3115	Leadwire Assembly-Black (See 58-03-0095)	(1)
34	31-15-0626	Lock Slide Button	(1)				
35	31-15-1500	Button	(1)				
36	31-15-1505	Box Button	(1)				
37	31-44-2401	Handle Half - Right	(1)				
38	31-44-2406	Handle Half - Left	(1)				
39	31-50-0052	Motor Cage	(1)				
40	31-50-0627	Motor Housing - Right	(1)				
41	31-50-0628	Motor Housing - Left	(1)				
42	31-52-0095	Shoe Release Lever	(1)				
43	32-05-3305	Gear	(1)				
44	32-10-4105	Steel Shim	(1)				

**SEE REVERSE SIDE
FOR IMPORTANT
SERVICE NOTES**