



SERVICE PARTS LIST

BUL.54-42-0600

SCREWDRIVER

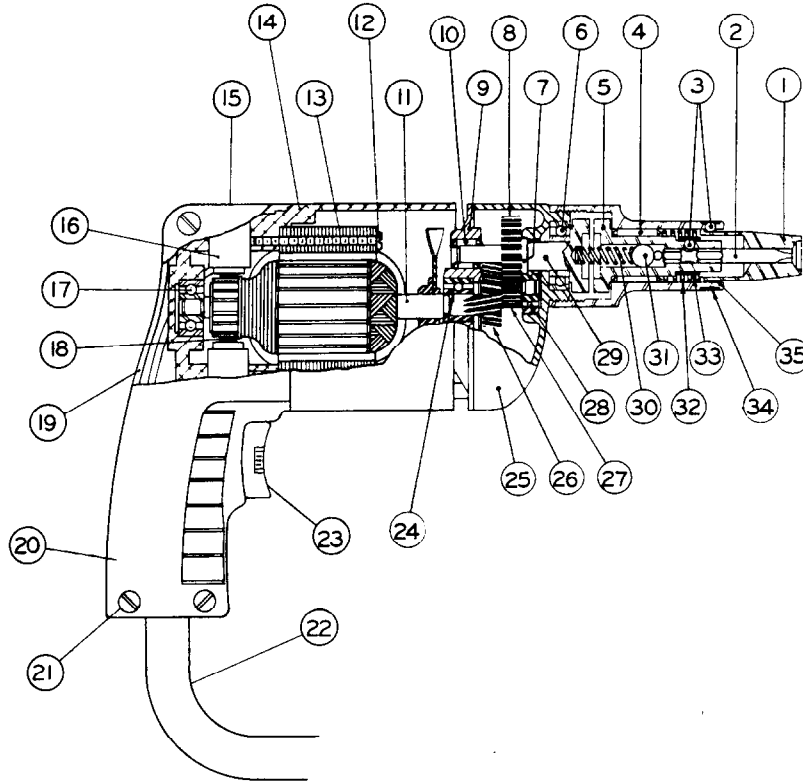
REVISED BUL 6388-1 DATE April '68

Catalog No. 6541-1

Starting Serial No. **388-1001**

WIRING INSTR. **58-01-0060**

Both Model and Serial No must be furnished to obtain correct parts.



ILLUSTRATED PARTS

FIG.	PART NO.	DESCRIPTION OF PART	NO.REQ.	FIG.	PART NO.	DESCRIPTION OF PART	NO.REQ.
1		Finder Sleeves		19	31-44-0111	Left Hand Handle Half Assy.	
2		Hexagonal Bits		20	31-44-0100	Right Hand Handle Half	
3	02-02-0150	5/32 Steel Ball	(2)	21	06-81-3650	8-32 x 3/4 Oval Hd. Handle Screw	(4)
4	02-50-3640	Needle Bearing		22	22-64-0450	Cord Set	
5	42-66-0240	Chuck		23	23-66-0520	Switch	
6	02-04-1020	Ball Bearing		24	02-04-0740	Ball Bearing	
7	34-60-0600	Spindle Snap Ring		25	28-14-0361	Gear Case	
8	32-75-1121	Spindle Gear		26	32-40-1121	Intermediate Gear	
9	28-28-0221	Diaphragm		27	36-66-0851	Intermediate Shaft	
10	02-50-1640	Needle Bearing		28	02-04-0640	Ball Bearing	
11	16-22-1241	Armature		29	38-50-2301	Spindle	
12	06-81-5950	6-32 x 1-7/8 Fil.Hd. Field Screw	(2)	30	40-50-2000	Separating Spring	
13	18-22-1121	Field		31	02-02-0310	5/16 Steel Ball	
14	28-50-6091	Motor Housing		32	40-50-1900	Finder Spring	
15	23-44-0020	Brush Retaining Screw	(2)	33	40-50-1400	Bit Retaining Spring	
16	22-22-0251	Brush Holder Assy.	(2)	34	40-50-1800	Finder Retaining Spring	
17	02-04-0740	Ball Bearing		35	45-22-0100	Sleeve	
18	22-18-0360	Carbon Brush Assy.	(2)				

MISCELLANEOUS PARTS NOT SHOWN

PART NO.	DESCRIPTION OF PART	NO.REQ.	PART NO.	DESCRIPTION OF PART	NO.REQ.
02-50-1210	Needle Bearing		12-98-0600	Name Plate	
06-81-8625	6-32 x 1/4 Rd. Hd. Brass Ground Screw		06-42-0400	Woodruff Key	
48-03-0010	Plug Adaptor		06-42-0800	Woodruff Key	
06-81-6550	8-32 x 1 1/2 Fil. Hd. Gear Case Screw	(2)	45-30-0120	Ball Bearing Ret. Slug	
06-81-6300	8-32 x 7/8 Fil. Hd. Gear Case Screw	(2)	06-81-4300	3-48 x 3/16 Rd. Hd. Name Plate Screw	(2)
06-81-3600	8-32 x 3/8 Oval Hd. Handle Screw	(4)	06-83-0100	10-32 x 1/4 Brush Holder Set Screw	(2)