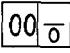




SERVICE PARTS LIST

BULLETIN NO.
54-42-0309

SPECIFY CATALOG NO. AND SERIAL NO. WHEN ORDERING PARTS		REVISED BULLETIN	DATE
0-1000 R.P.M. REV. SCREWDRIVER		54-42-0308	July '94
CATALOG NO. 6543-1	STARTING SERIAL NO. 469C	WIRING INSTRUCTION 58-01-0032	

EXAMPLE:
 Component Parts (Small #)
 Are Included When Ordering
 The Assembly (Large #).

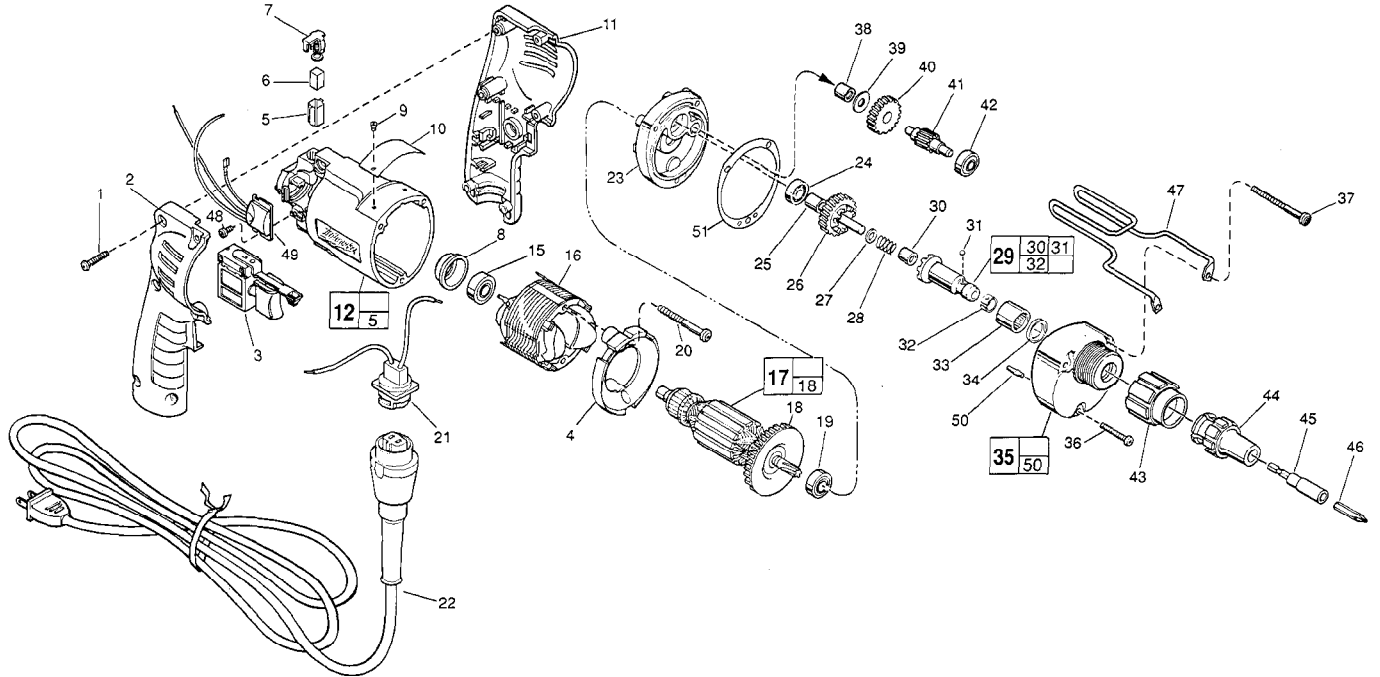


FIG. PART NO.	DESCRIPTION OF PART	NO. REQ.	FIG. PART NO.	DESCRIPTION OF PART	NO. REQ.
1	06-82-7284	8-16 x 3/4" Pan Hd. Slit. Plast. T-20	(6)	39	45-88-7990 Thrust Washer (1)
2	31-44-1845	Right Handle Half (1)	40	32-40-1613 Intermediate Gear (1)	
3	23-66-2145	Speed Control Switch (1)	41	36-66-4096 Intermediate Pinion Shaft (1)	
4	42-14-0380	Baffle (1)	42	02-04-0640 Ball Bearing (1)	
5	22-20-0830	Brush Tube (2)	43	48-32-1000 Bit Housing (1)	
6	22-16-0275	Carbon Brush (2)	44	48-32-0250 Bit Guide (1)	
7	23-52-1560	Brush Spring Assembly (2)		48-32-0608 Long Bit Guide (Refer To Catalog) (1)	
8	22-72-0100	Bearing Cup (1)		48-32-1012 Long Bit Guide (Refer To Catalog) (1)	
9	06-85-0200	Nameplate Screw (2)	45	48-32-3050 Bit Holder - Non Magnetic (1)	
10	12-99-0860	Service Nameplate (1)		48-30-2600 Bit & Finder Combination (Refer To Catalog) (1)	
11	31-44-1840	Left Handle Half (1)		48-30-2650 Bit & Finder Combination (Refer To Catalog) (1)	
12	14-38-0590	Motor Housing Assembly (1)	46	48-32-1050 #2 Insert Bit (1)	
15	02-04-0645	Ball Bearing (1)	47	42-70-5080 Belt Clip (1)	
16	18-11-0150	120 Volt Field (1)	48	06-82-7212 4-20 x 1/4" Pan Hd. Slit. Plast. T-10 (1)	
17	16-10-0680	120 Volt Armature (1)	★ 49	14-20-0750 Remote Electronic Assembly (1)	
18	22-84-0880	Fan Assembly (1)	50	06-65-0825 1/8 x 1/2 Groove Pin 5 (1)	
★ 19	02-04-0851	Ball Bearing (1)	★ 51	43-44-0925 Gasket (1)	
20	06-82-7203	7-18 x 2-1/8" Pan Hd. Slit. Plast. T-20 (2)			
21	22-56-0665	Blade Housing Assembly (1)			
22	48-76-5010	Cord Set (1)			
★ 23	28-28-1961	Diaphragm (1)			
24	02-04-0645	Ball Bearing (1)			
25	45-36-1280	Spacer (1)			
26	32-10-4050	Clutch Gear Assembly (1)			
27	45-88-0712	Thrust Washer (1)			
28	40-50-6600	Separator Spring (1)			
29	42-66-0766	Clutch Chuck Assembly (1)			
30	02-50-2400	Needle Bearing (1)			
31	02-02-0130	Steel Ball (1)			
32	40-50-0510	Bit Retaining Spring (1)			
33	02-50-4220	Needle Roller Bearing (1)			
34	45-06-0106	Oil Seal (1)			
35	14-30-0600	Gear Case Assembly (1)			
36	06-82-7344	7-18 x 1-1/2" Pan Hd. Slit. Plast. T-20 (1)			
37	06-82-7464	7-18 x 2-3/4" Pan Hd. Slit. Plast. T-20 (2)			
38	02-50-2410	Needle Bearing (1)			

FIG. LUBRICATION
 35 1-1/2 Oz. Type "E" Grease, No. 49-08-4122.
 Place Near Intermediate Shaft Ball Bearing
 In Gear Case.

FIG. NOTES
 1 Torque to 18-22 In./Lbs.
 20,36,37 Torque to 15-20 In./Lbs.
 48 Torque to 3-5 In./Lbs.
 8 Place in motor housing before inserting armature.
 30,33 Press only on end with manufacturer ID.
 30 Press 11/64" from clutch face.
 34 Lip towards front of gear case.
 15,19,24 Seal towards armature.
 33,38 Press flush to casting surface.

MILWAUKEE ELECTRIC TOOL CORPORATION
 13135 W. LISBON RD., BROOKFIELD, WI 53005