



# SERVICE PARTS LIST

**BUL. 54-42-2250**

## SCREWDRIVER

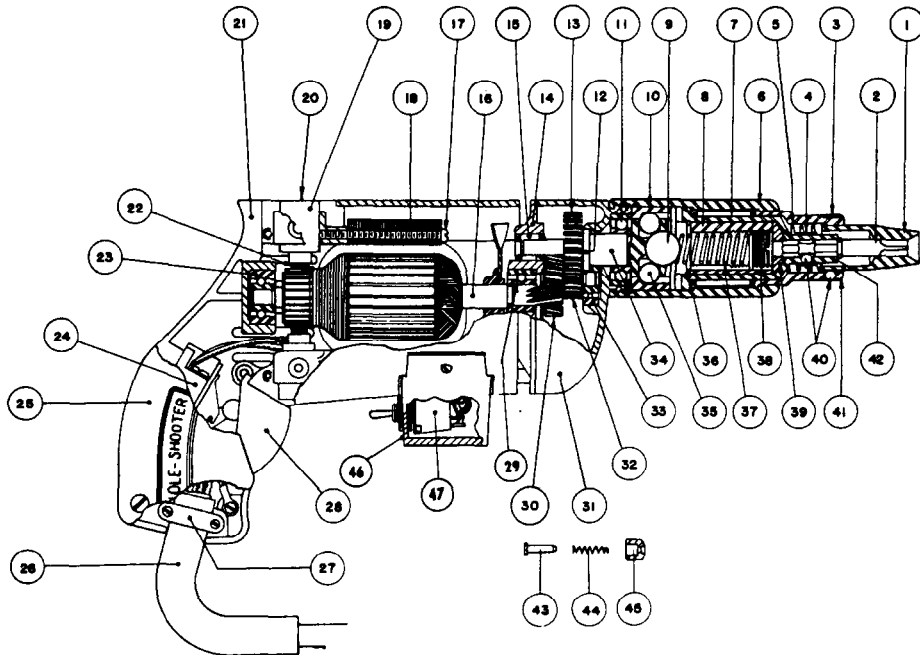
REVISED BUL. 6139-1 DATE Feb. '68

**MODEL NO. 615MR**

Starting Serial No. **139-1001**

WIRING INSTR.

Both Model and Serial No. must be furnished to obtain correct parts.



### ILLUSTRATED PARTS

FIG.	PART NO.	DESCRIPTION OF PART	PRICE	FIG.	PART NO.	DESCRIPTION OF PART
1	Specify Size	Finder Sleeves	See Price List	26	18G-8SR1	Cord Set
2	Specify Size	Hexagonal Bits	See Price List	27	8B1-3	Cord Clamp
3	6A22-1	Finder Retaining Spring		28	3B1-2	Switch Trigger
4	6A21-1	Bit Retaining Spring		29	WC87037	Armature Ball Brg. (Pinion End)
5	6A22-2	Finder Spring		30	6A-14	Intermediate Gear
6	6A-20	Sleeve		31	3A-3C	Gear Case
7	B-1616	Clutch Assembly Needle Brg.		32	6A-13	Intermediate Pinion Shaft
8	6A21-2A	Threaded Insert		33	ND36	Pinion Shaft Ball Bearing
9	9/16 Dia.	Master Ball		34	6A-8A	Spindle
10	6A8-1	Clutch Collar		35	5/16 Dia.	Driving Balls ea.
11	93L00	Spindle Ball Bearing		36	XRO-432	Retaining Ring
12	XSO-219	Spindle Snap Ring		37	6A21-4	Torque Limiting Spring (Normal)
13	6A-111	Spindle Gear		37a	6A21-5	Torque Limiting Spring (Light)
14	3A-2C	Diaphragm		37b	6A21-7	Torque Limiting Spring (Heavy)
15	M-471	Spindle Needle Bearing		38	6A21-3	Adjusting Screw
16	7B-600R	Armature Assembly		39	6A21-6	Bit Backing Washer
17	#6-32x1 1/4	Fil. Hd. Field Screws	(2)	40	5/32 Dia.	Bit and Finder Retaining Ball ea.
18	8B-700	Field Assembly		41	6A-22	Finder Guide
19	7B-320	Brush Holder Assembly		42	6A-21A	Chuck
20	3A-40	Brush Retaining Cap		43	3B15-1	Trigger Lock Shift
21	6BR-1	Motor Housing		44	3A15-4	Trigger Lock Spring
22	8B-370	Carbon Brush Assembly		45	3A15-2	Trigger Lock Button
23	WC87037	Ball Bearing		46	6B1-4	Reversing Switch Housing
24	8909K209	Switch		47	8908K355	Reversing Switch
25	3B1-1	Handle Cover				

### MISCELLANEOUS PARTS NOT SHOWN

SIZE OR PART NO.	DESCRIPTION OF PART	PRICE	SIZE OR PART NO.	DESCRIPTION OF PART	PRICE
M-361	Int. Pinion Needle Bearing		#8-32x1-3/8 Fil. Hd.	Gear Case Screws	(2)
#6-32x5/16 Fil. Hd.	Sem Switch Mounting Screw		#8-32x7/8 Fil. Hd.	Gear Case Screws	(2)
#8-32x3/4 Fil. Hd.	Handle Cover Screws	(3)	#4x1/4 Driv-In	Name Plate Screws	(2)
#10-32x1/4 Hd'less	Slotted Brush Holder Screws	(2)	615MR-1	Name Plate	
#8-32x1/2 Fil. Hd.	Cord Clamp Screws	(2)	#201	Woodruff Key Screws	
#6-32x1/4 (Brass)	Rd. Hd. Attachment Plug Adaptor		#207	Woodruff Key	
3PA-1			6BR1-2	Baffle	