



SERVICE PARTS LIST

BUL.54-42-2252

SCREWDRIVER

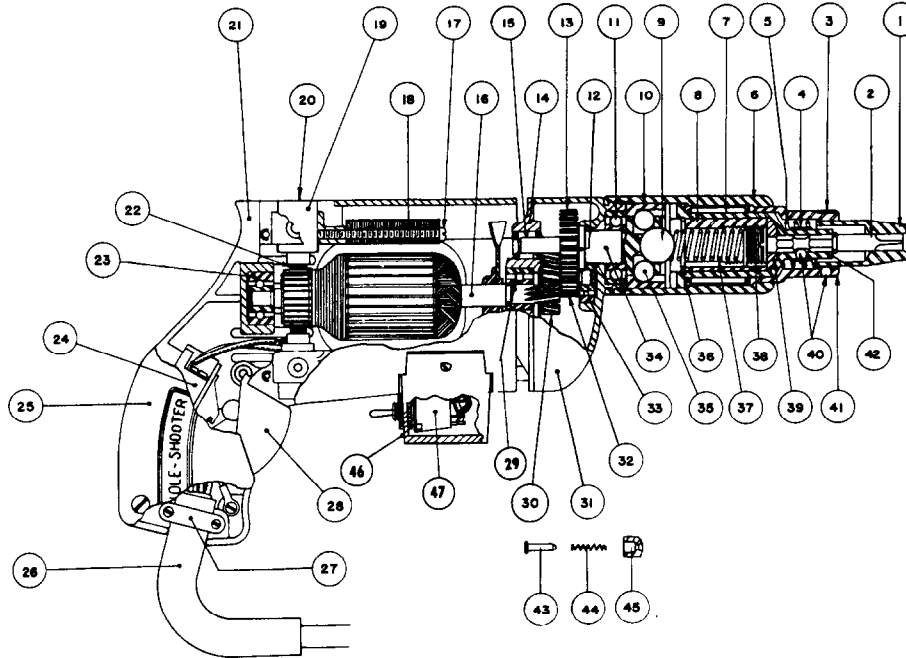
REVISED BUL. 6139-3 DATE April '68

Catalog No. 6600-1

Starting Serial No. **139-1397**

WIRING INSTR. **58-01-0080**

Both Model and Serial No. must be furnished to obtain correct parts.



ILLUSTRATED PARTS

FIG.	PART NO.	DESCRIPTION OF PART	FIG.	PART NO.	DESCRIPTION OF PART
1	Specify Size	Finder Sleeves	25	28-20-3002	Handle Cover
2	Specify Size	Hexagonal Bits	26	22-64-0170	Cord Set
3	40-50-1800	Finder Retaining Spring	27	28-17-0400	Cord Clamp
4	40-50-1400	Bit Retaining Spring	28	31-92-0101	Switch Trigger
5	40-50-1900	Finder Spring	29	02-04-0740	Ball Bearing (Pinion End)
6	45-22-0090	Sleeve	30	32-40-1121	Intermediate Gear
7	02-50-6440	Needle Bearing	31	28-14-0361	Gear Case
8	43-84-0060	Threaded Insert	32	36-66-1551	Intermediate Pinion Shaft
9	02-02-0560	9/16 Dia. Master Ball	33	02-04-0640	Ball Bearing
10	42-76-0100	Clutch Collar	34	38-50-2251	Spindle
11	02-04-1020	Ball Bearing	35	02-02-0310	5/16 Dia. Driving Balls (3)
12	34-60-0600	Spindle Snap Ring	36	34-60-1700	Retaining Ring
13	32-75-1381	Spindle Gear	37	40-50-1500	Torque Limiting Spring (Normal)
14	28-28-0221	Diaphragm	37a	40-50-1600	Torque Limiting Spring (Medium)
15	02-50-1640	Needle Bearing	37b	40-50-1700	Torque Limiting Spring (Light)
16	16-22-1241	Armature Assembly	38	45-04-0090	Adjusting Screw
17	06-81-5950	6-32x 1-7/8 Fil. Hd. Field Screws (2)	39	45-88-0200	Bit Backing Washer
18	18-22-1121	Field Assembly	40	02-02-0150	Bit and Finder Retaining Balls (2)
19	22-22-0050	Brush Holder Assembly	41	43-56-0060	Finder Guide
20	23-44-0020	Brush Retaining Cap	42	42-66-0230	Chuck
21	27-50-4523	Motor Housing	43	44-70-0071	Trigger Lock Shift
22	22-18-0090	Carbon Brush Assembly	44	40-50-1200	Trigger Lock Spring
23	02-04-0740	Ball Bearing	45	42-42-0061	Trigger Lock Button
24	23-66-0280	Switch	46	28-50-7041	Reversing Switch Housing
			47	23-66-0220	Reversing Switch

MISCELLANEOUS PARTS NOT SHOWN

PART NO.	DESCRIPTION OF PART	NO. REQ.	PART NO.	DESCRIPTION OF PART	NO. REQ.
02-50-1210	Needle Bearing		06-81-6550	8-32x1 1/2 Fil. Hd. Gear Case Screws Sem	(2)
06-81-5800	6-32x 5/16 Fil. Hd. Sem Switch Mtg. Screw	(3)	06-81-6300	8-32x7/8 Fil. Hd. Gear Case Screws Sem	(2)
34-60-2060	Retaining Rings		06-81-4300	3-48x3/16 Rd. Hd. Name Plate Screws	(2)
06-83-0100	10-32x 1/4 Hd'less Slotted Brush Holder Scs.	(2)	12-98-0600	Name Plate	
06-81-6150	8-32x 1/2 Fil. Hd. Sem Cord Clamp Screws	(2)	06-42-0400	Woodruff Key	
06-81-8625	6-32x 1/4 (Brass) Rd. Hd.		06-42-0800	Woodruff Key	
48-03-0010	Attachment Plug Adaptor		45-30-0060	Ball Bearing Retaining Slug	
06-81-6150	8-32x 1/2 Fil. Hd. Sems Handle Cover Screws	(3)	42-14-0060	Baffle	
★ 06-97-1800	Lock Washer	(4)	★ 22-75-0055	Switch Dial	