



# SERVICE PARTS LIST

**BULLETIN NO.**  
**54-42-5800**

**SPECIFY CATALOG NO. AND SERIAL NO. WHEN ORDERING PARTS**

REVISED BULLETIN	DATE
	May '98
WIRING INSTRUCTION	
<b>58-01-1590</b>	

## SNAP ACTION CLUTCH POWER UNIT

**CATALOG NO. 6701-20**     **STARTING SERIAL NO. 938A**

**EXAMPLE:**

**00** **0**  
Component Parts (Small #) Are Included  
When Ordering The Assembly (Large #).

**NOTE: 6701-21 Includes Magazine Attachment No. 48-05-1000. See Reverse Side.**

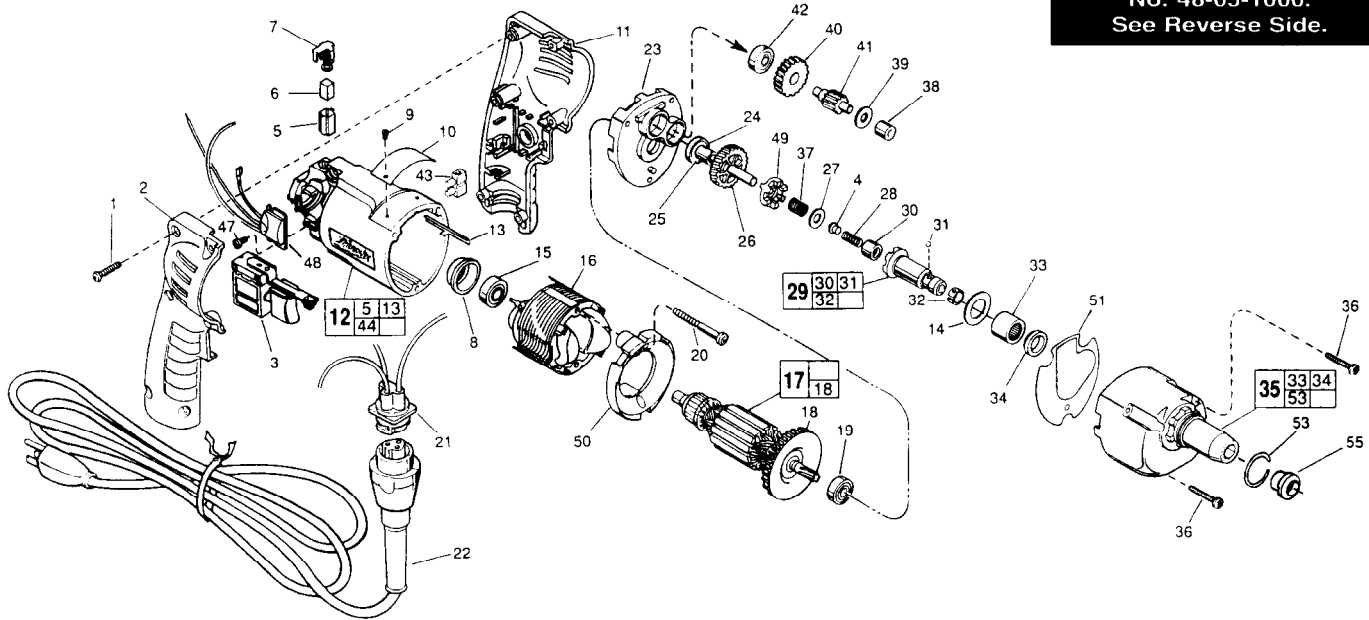


FIG. PART NO.	DESCRIPTION OF PART	NO. REQ.
1	06-82-7284 8-16 x 3/4" Pan Hd. Slit. Plast. T-20	(6)
2	31-44-1845 Right Handle Half	(1)
3	23-66-2145 Speed Control Switch	(1)
4	44-60-0505 Thrust Pin	(1)
5	22-20-0830 Brush Tube	(2)
6	22-16-0275 Carbon Brush	(2)
7	23-52-1570 Brush Spring Assembly	(2)
8	22-72-0100 Bearing Cup	(1)
9	06-72-1720 Nameplate Rivet	(2)
10	12-99-0850 Service Nameplate	(1)
11	31-44-1840 Left Handle Half	(1)
12	14-38-0601 Motor Housing Assembly	(1)
13	44-60-0530 Ground Pin	(1)
14	45-88-8350 Stop Washer	(1)
15	02-04-0645 Ball Bearing	(1)
16	18-11-0150 120 Volt Field	(1)
17	16-10-0700 120 Volt Armature	(1)
18	22-84-0880 Fan Assembly	(1)
19	02-04-0851 Ball Bearing	(1)
20	06-82-7203 7-18 x 2-1/8" Pan Hd. Slit. Plast. T-20	(2)
21	22-56-0808 Blade Housing Assembly	(1)
22	48-76-4008 Quik-Lok Cord Set	(1)
23	28-28-2310 Diaphragm	(1)
24	02-04-0645 Ball Bearing	(1)
25	45-36-1280 Spacer	(1)
26	32-10-4060 Clutch Gear Assembly	(1)
27	45-88-0555 Thrust Washer	(1)
28	40-50-0095 Separator Spring	(1)
29	42-66-0710 Clutch Chuck Assembly	(1)
30	02-50-2400 Needle Bearing	(1)
31	02-02-0130 Steel Ball	(1)
32	40-50-0510 Bit Retaining Spring	(1)
33	02-50-4220 Needle Roller Bearing	(1)
34	45-06-0570 Oil Seal	(1)
35	14-30-0745 Gear Case Assembly	(1)
36	06-82-7344 7-18 x 1-1/2" Pan Hd. Slit. Plast. T-20	(3)
37	40-50-8515 Bias Spring	(1)
38	02-50-2400 Needle Bearing	(1)
39	45-88-7990 Thrust Washer	(1)
40	32-40-1614 Intermediate Gear	(1)
41	36-66-9680 Intermediate Pinion Shaft	(1)
42	02-04-0645 Ball Bearing	(1)

FIG. PART NO.	DESCRIPTION OF PART	NO. REQ.
43	22-56-0456 Terminal Block	(1)
44	23-94-6225 Ground Wire Assembly (Not Shown)	(1)
47	06-82-7212 4-20 x 1/4" Pan Hd. Slit. Plast. T-10	(1)
48	14-20-0750 Remote Electronic Assembly	(1)
49	42-70-0310 Drive Clutch	(1)
50	42-14-0380 Baffle	(1)
51	43-44-4010 Gasket	(1)
53	44-90-0401 Locator Ring	(1)
55	30-37-0046 Nose Guide	(1)

**FIG. LUBRICATION**

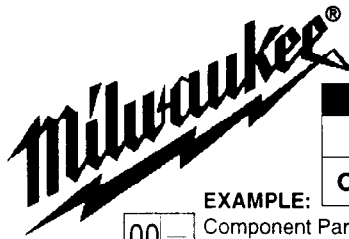
17,26,37 1/64 Oz. Type "E" Grease, No. 49-08-4122, On Bias Spring.  
1/64 Oz. In The Clutch Pockets Of The Clutch Gear.  
1/64 Oz. On Each Side Of Armature Pinion At Clutch Gear.  
35 7/8 Oz. In Pinion Pocket Of Gear Case, Near Intermediate Shaft Needle Bearing In Gear Case.

Apply A Light Film Of "E" Grease To Ball And Needle Bearing Pockets Of The Diaphragm And Gear Case Prior To Pressing Bearings. Apply A Light Film Of "E" Grease To The Lead Chamfer Of Clutch Chuck, Thrust Pin And Separator Spring Prior To Assembly.

**FIG. NOTES**

1 Torque to 18-28 In./Lbs.  
20,36 Torque to 15-20 In./Lbs.  
47 Torque to 3-5 In./Lbs.  
8 Place in motor housing before inserting armature.  
30,33,38 Press only on end with manufacturer ID.  
33,38 Press flush to casting surface.  
34 Spring side towards rear of gear case.  
15 Seal towards armature.  
24,42 Seal Away From Armature

**MILWAUKEE ELECTRIC TOOL CORPORATION**  
13135 W. LISBON RD., BROOKFIELD, WI 53005



# SERVICE PARTS LIST

BULLETIN NO.

SPECIFY CATALOG NO. AND SERIAL NO. WHEN ORDERING PARTS		REVISED BULLETIN	DATE
SCREW-SHOOTER MAGAZINE ATTACHMENT			
CATALOG NO. 48-05-1000	STARTING SERIAL NO. 001016	WIRING INSTRUCTION	

EXAMPLE: 

00	0
----	---

 Component Parts (Small #) Are Included When Ordering The Assembly (Large #).

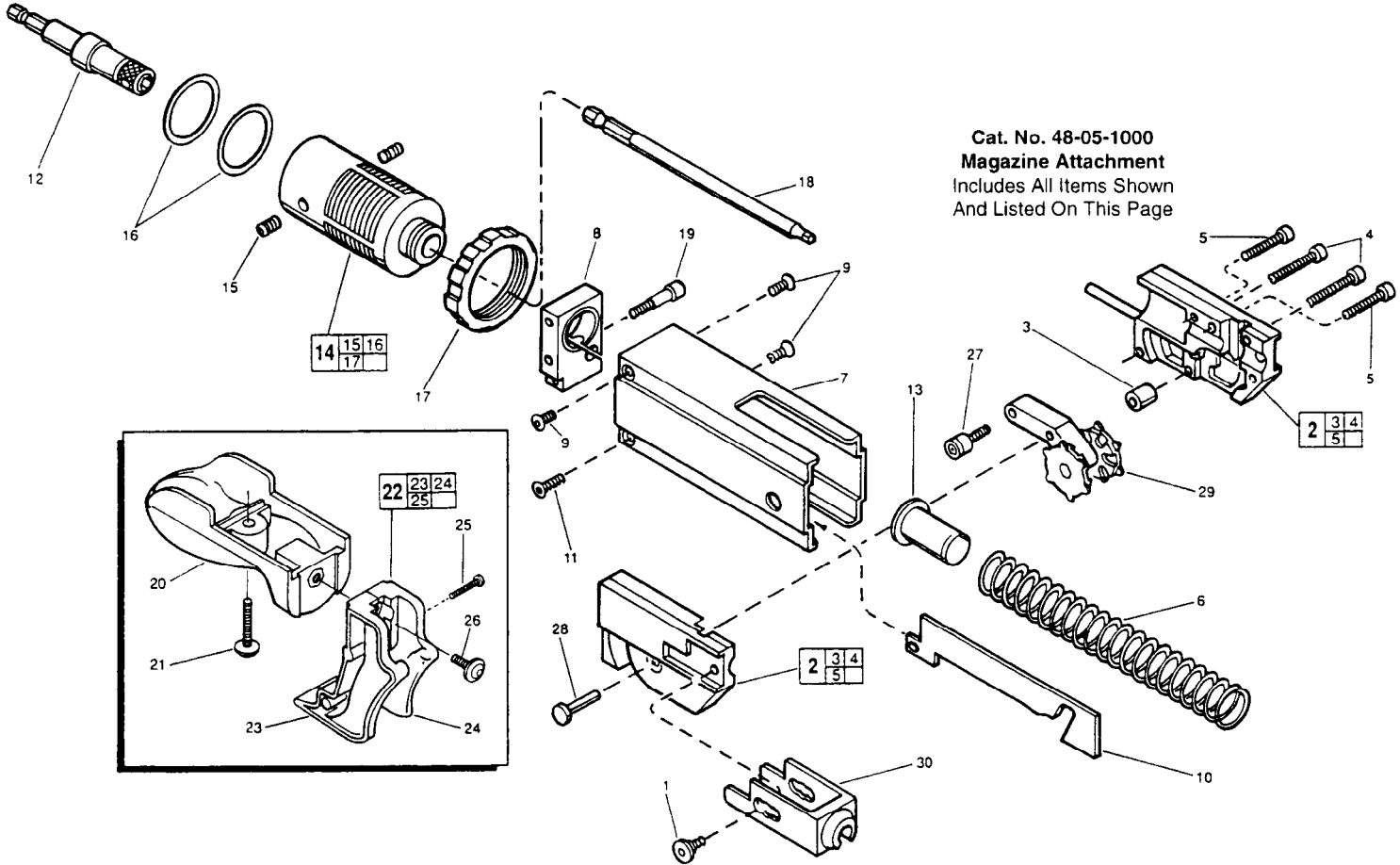


FIG.	PART NO.	DESCRIPTION OF PART	NO. REQ.
1	06-81-1700	M5 x 0.8 x 5. lg, 3mm Skt. Hd. Sld. Sc.	2
2	43-56-0310	Gliding Assembly	1
3	42-40-0001	Distance Bearing Bushing	1
4	06-95-1000	M3.5 x 22. lg, Phillips Pan Hd. Plast. Sc.	2
5	06-95-1005	M3.5 x 24. lg, Phillips Pan Hd. Plast. Sc.	2
6	40-50-0405	Spring (Blue)	1
7	43-76-0050	Housing	1
8	44-66-1500	Mounting Plate	1
9	06-81-2000	M4 x 0.7 x 8. lg, 2.5mm Skt. Hd. Flat Sc.	3
10	44-66-0305	Curve Plate	1
11	06-81-2005	M4 x 0.7 x 10. lg, 2.5mm Skt. Hd. Flat Sc.	1
12	43-72-0010	Bit Holder	1
13	43-56-0300	Spring Guide	1
14	43-76-0295	Adapter Assembly	1
15	06-83-1400	M6 x 1.0 x 6. lg, 3mm Socket Set Screw	2
16	34-40-0700	O-Ring	2
17	44-40-0575	Stop Nut	2
18	48-30-1521	120mm #2 Phillips Bit	1
18A	48-30-1526	120mm #2 Square Bit (Not Shown)	1
19	06-81-2010	M5 x 0.8 x 25. lg, 4mm Skt. Hd. Sld. Sc.	1
20	43-62-1230	Handle	1
21	06-81-2015	M5 x 0.8 x 25. lg, 3mm Skt. Hd. Sld. Sc.	1
22	43-56-0305	Plastic Belt Guide	1
23	43-56-0320	Belt Guide-Right	1
24	43-56-0325	Belt Guide-Left	1

FIG.	PART NO.	DESCRIPTION OF PART	NO. REQ.
25	06-95-1010	Assembly Guide Screw	2
26	06-81-2020	M5 x 0.8 x 12 lg, 4mm Skt.1 Hd. Pan Sc.	1
27	06-81-2025	M5 x 0.8, 3mm Socket Hd. Roller Screw	1
28	44-60-1520	Pivot Pin	1
29	42-74-0095	Gear Wheel Unit	1
30	43-46-0200	Depth Control, 1-5/8" to 2"	1
30A	43-46-0205	Depth Control, 1-1/4" to 1-1/2" (Not Shown)	1
	49-96-4800	Allen Key Set-2, 2.5, 3 & 4mm (Not Shown)	1
	10-15-6100	Depth Label (Not Shown)	1
	12-25-1470	Warning Label (Not Shown)	1
	12-25-1465	Presentation Label (Not Shown)	1

FIG. NOTES:  
9,11 Use Loctite 272 on screws.