



SERVICE PARTS LIST

BULLETIN NO.
54-42-6051

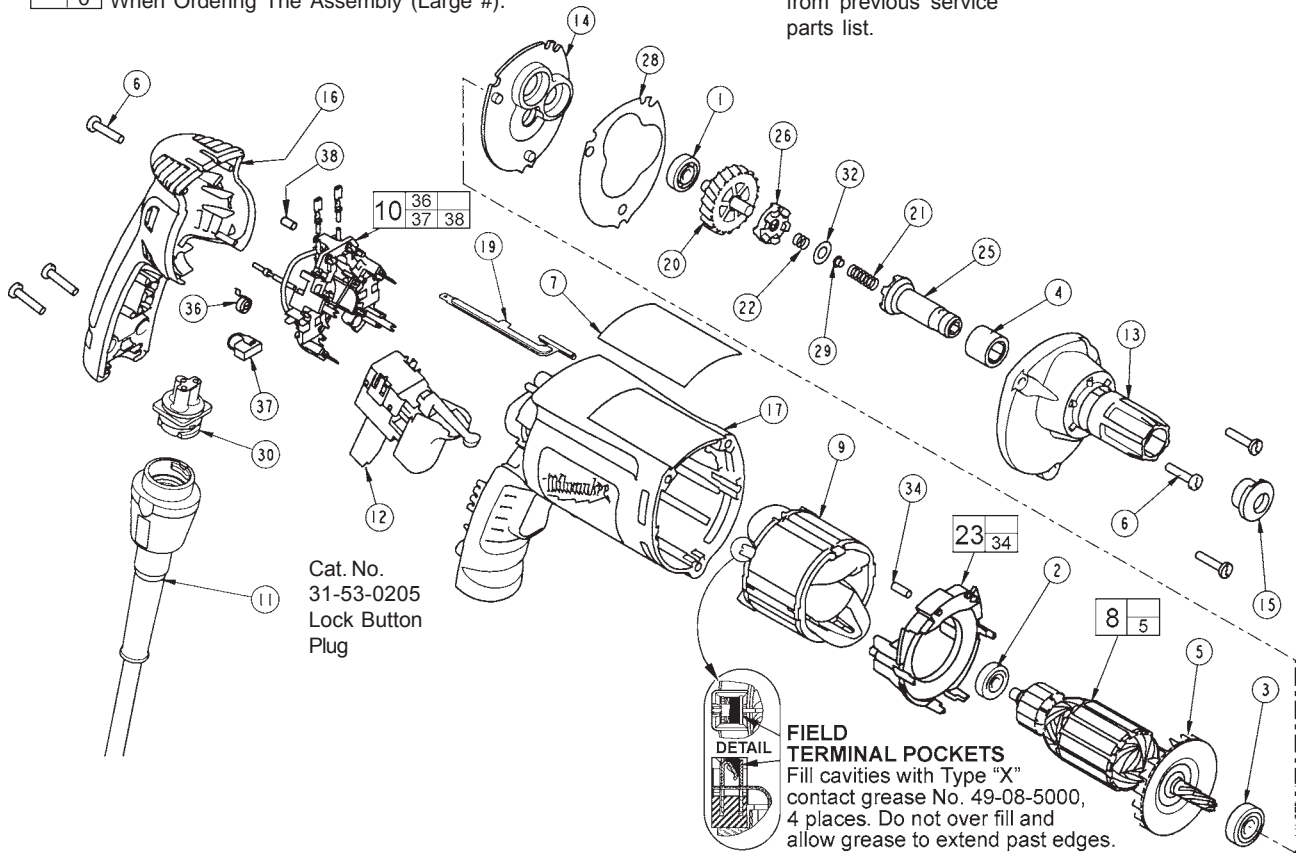
| SPECIFY CATALOG NO. AND SERIAL NO. WHEN ORDERING PARTS | | REVISED BULLETIN | DATE |
|--|--|---|-----------|
| POWER UNIT | | 54-42-6050 | Jan. 2003 |
| CATALOG NO. 6703-20 | STARTING SERIAL NO. 118B | WIRING INSTRUCTION 58-01-1800 | |

EXAMPLE:

| |
|----|
| 00 |
| 0 |

 Component Parts (Small #) Are Included
 When Ordering The Assembly (Large #).

★=Part number change
from previous service
parts list.



| FIG. | PART NO. | DESCRIPTION OF PART | NO.REQ. |
|------|------------|--|---------|
| 1 | 02-04-0640 | Ball Bearing | (1) |
| 2 | 02-04-0645 | Ball Bearing | (1) |
| 3 | 02-04-0852 | Ball Bearing | (1) |
| 4 | 02-50-3245 | Needle Bearing | (1) |
| 5 | 22-84-0840 | Fan | (1) |
| 6 | 06-82-7275 | 7-18 x 3/4" Slotted Plastite Torx T-20 | (6) |
| 7 | 12-99-2565 | Service Nameplate | (1) |
| ★ 8 | 16-10-2201 | Armature | (1) |
| 9 | 18-07-2200 | Field | (1) |
| 10 | 22-18-1210 | Brush Card Assembly | (1) |
| 11 | 48-76-4008 | Quik-Lok Cord Set | (1) |
| 12 | 23-66-2585 | Switch | (1) |
| 13 | 28-14-2375 | Gearcase | (1) |
| 14 | 28-28-2315 | Diaphragm | (1) |
| 15 | 30-37-0046 | Drywall Nose Guide | (1) |
| 16 | 31-15-2030 | Handle Halve | (1) |
| 17 | 31-50-2030 | Motor Housing | (1) |
| 19 | 44-60-1700 | Ground Pin | (1) |
| ★ 20 | 32-10-0521 | Clutch Gear Assembly | (1) |
| 21 | 40-50-0095 | Separator Spring | (1) |
| 22 | 40-50-8515 | Bias Spring | (1) |
| 23 | 42-14-0460 | Baffle Assembly | (1) |
| 25 | 42-66-0715 | Clutch Chuck Assembly | (1) |
| 26 | 42-70-0310 | Drive Clutch | (1) |
| 28 | 43-44-0985 | Gasket | (1) |
| 29 | 44-60-0505 | Thrust Pin | (1) |
| 30 | 22-56-1010 | Pin Housing Assembly | (1) |
| 32 | 45-88-0555 | Clutch Thrust Washer | (1) |
| 34 | 45-30-0030 | Slug | (2) |
| 36 | 23-52-1610 | Brush Spring | (2) |
| 37 | 22-18-1310 | Brush Assembly | (2) |
| 38 | 45-30-0035 | Slug | (1) |

LUBRICATION (Type "Y" Grease, No. 49-08-5270)

- Fill the 3 enlarged clutch pockets of the clutch gear assembly (20) with .5 gm. (.02 oz.) grease.
- Apply the same amount of grease in the bias spring (22).
- Apply in total .5 gm. (.02 oz.) grease to the clutch thrust washer (32), thrust pin (29) and separator spring (21).
- Place 7.7 gm. (.27 oz.) of grease at the armature pin location in the gearcase (13) and fill to slightly above the next higher gearcase level.
- Apply a light film of grease to the lead chamfer of the clutch chuck (25) prior to assembly.

Before assembly, lightly coat all press fit areas with lightweight spindle oil.

FIG. NOTES:

- 4 Needle bearing to have it's seal toward the front of the tool. Needle bearing to be pressed .133/.143 under flush.

MILWAUKEE ELECTRIC TOOL CORPORATION
13135 W. LISBON RD., BROOKFIELD, WI 53005