



SERVICE PARTS LIST

BULLETIN NO.
54-42-5180

SPECIFY CATALOG NO. AND SERIAL NO. WHEN ORDERING PARTS		REVISED BULLETIN 54-42-5179	DATE May '84
T.S.C. REV. DRYWALL SCREW DRIVER			
CATALOG NO. 6750-1	STARTING SERIAL NO. 464-110000	WIRING INSTRUCTION 58-01-0016	
CAT. NO.	START SER. NO.	BILINGUAL LABEL	

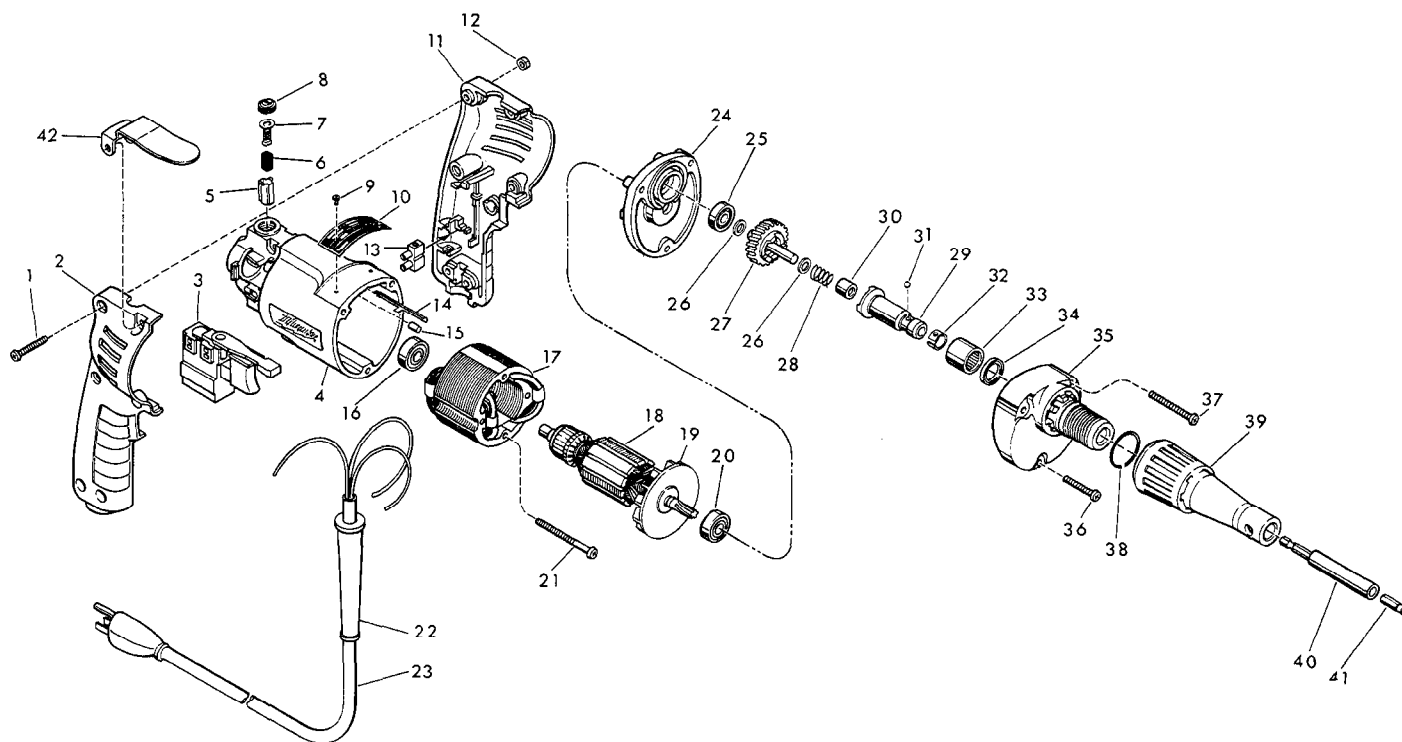


FIG.	PART NO.	DESCRIPTION OF PART	NO. REQ.	
★1	06-81-0473	8-32 x 1" Pan Hd. Pozi Dr. Screw	(6)	
★2	31-44-1130	Right Handle Half	(1)	
★3	23-66-1245	Speed Control Switch	(1)	
★4	31-50-0340	Motor Housing	(1)	
★5	22-20-0530	Brush Tube	(2)	
★6	22-16-0270	Carbon Brush	(2)	
★7	23-52-0210	Brush Spring Assembly	(2)	
★8	23-44-0120	Brush Retaining Screw	(2)	
★9	06-85-0200	Nameplate Screw	(2)	
★10	12-99-0318	Nameplate Blank	(1)	
★11	31-44-1140	Left Handle Half	(1)	
★12	06-55-0835	8-32 Hex Nut	(6)	
★13	22-56-0455	Terminal Block	(1)	
★14	44-60-0530	Ground Pin	(1)	
★15	45-30-0120	Ball Bearing Retaining Slug	(1)	
★16	02-04-0710	Ball Bearing	(1)	
★17	18-10-0130	120V Field	(1)	
★18	16-10-0600	120V D.I. Armature - (Incl. Fig. No. 19)	(1)	
	19	22-84-0440	Fan Assembly	(1)
★20	02-04-0848	Ball Bearing	(1)	
★21	06-95-0180	7-18 x 2" Pan Hd. Plastite Screw	(2)	
★22	44-76-0130	Cord Protector	(1)	
★23	22-64-1120	Cord Set	(1)	
★24	28-28-1720	Diaphragm	(1)	
★25	02-04-0645	Ball Bearing	(1)	
★26	45-88-0712	Thrust Washer	(2)	
★27	32-10-1040	Clutch Gear Assembly	(1)	
	28	40-50-6600	Separator Spring	(1)

FIG.	PART NO.	DESCRIPTION OF PART	NO. REQ.
★29	42-66-0765	Clutch Chuck Assy. (Incl. Fig. Nos. 30 Thru 32)	(1)
★30	02-50-2400	Needle Bearing	(1)
★31	02-02-0130	Steel Ball	(1)
★32	40-50-0510	Bit Retaining Spring	(1)
★33	02-50-4220	Needle Roller Bearing	(1)
★34	45-06-0105	Oil Seal	(1)
★35	28-14-1581	Gear Case	(1)
★36	06-95-0173	7-18 x 1-1/4" Pan Hd. Plastite Screw	(1)
★37	06-95-0145	7 x 1-3/4" Pan Hd. Pozi Drive Screw	(2)
★38	44-90-0400	Locator Ring	(1)
★39	49-26-1030	Drywall Locator Assembly	(1)
★40	48-32-3065	Magnetic Bit Holder	(1)
★41	48-32-1050	Insert Bit	(1)
★42	48-67-0100	Belt Clip	(1)
★43	10-98-6420	Caution Label (Not Shown)	(1)

NOTES:

Screws Fig. No. 1, Fig. No. 21 & Fig. Nos. 36 & 37 Should Be Torqued To 15-20 Lbs.

LUBRICATION

Use 1/4 Oz. Of Type "E" Grease In Gear Case