



# SERVICE PARTS LIST

**BULLETIN NO.**  
54-42-5181

SPECIFY CATALOG NO. AND SERIAL NO. WHEN ORDERING PARTS		REVISED BULLETIN 54-42-5180	DATE Aug. '86
T.S.C. REV. DRYWALL SCREW DRIVER		WIRING INSTRUCTION 58-01-0016	
CATALOG NO. 6750-1	STARTING SERIAL NO. 464-142000		

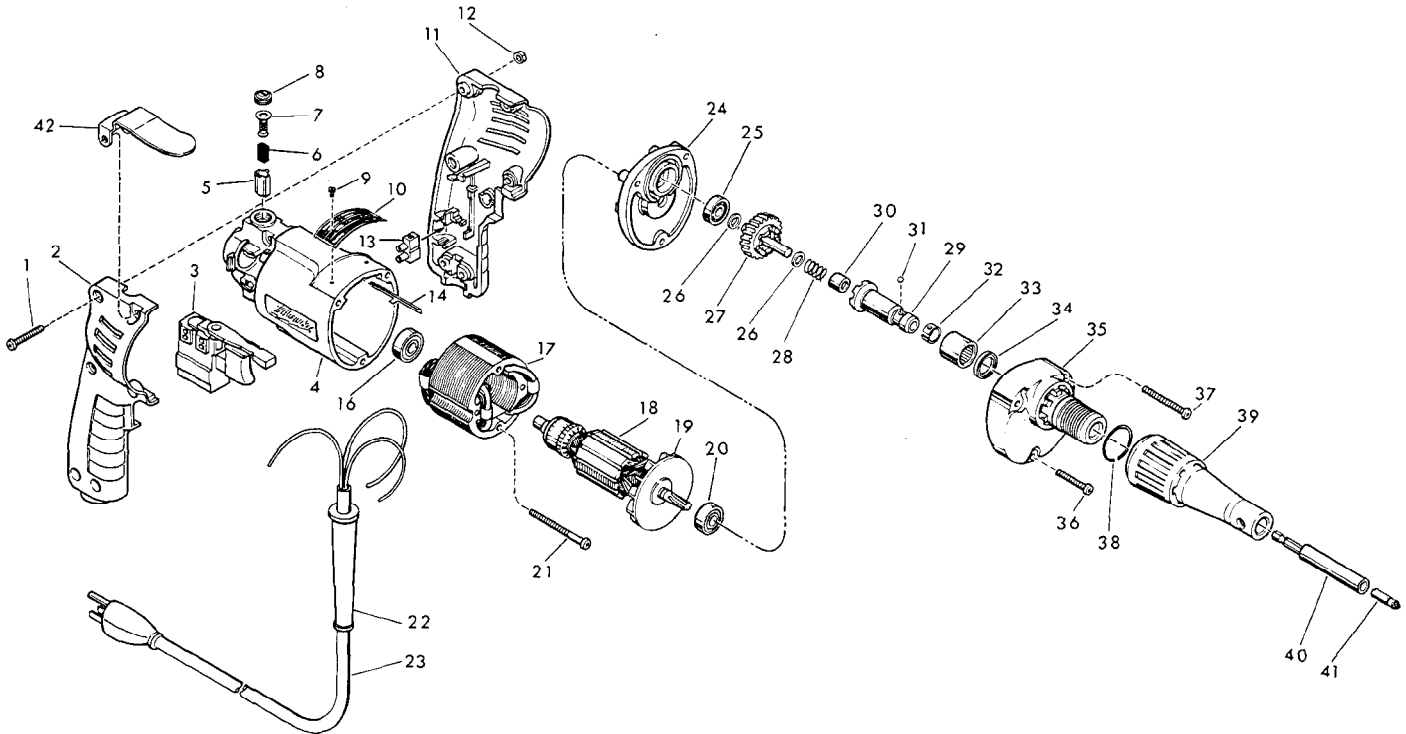


FIG.	PART NO.	DESCRIPTION OF PART	NO. REQ.
	1	06-81-0473 8-32 x 1" Pan Hd. Pozi Dr. Screw	(6)
	2	31-44-1130 Right Handle Half	(1)
★	3	23-66-1465 Speed Control Switch	(1)
★	4	31-50-0345 Motor Housing	(1)
	5	22-20-0530 Brush Tube	(2)
★	6	22-16-0275 Carbon Brush	(2)
	7	23-52-0210 Brush Spring Assembly	(2)
	8	23-44-0120 Brush Retaining Screw	(2)
	9	06-85-0200 Nameplate Screw	(2)
	10	12-99-0318 Nameplate Blank	(1)
	11	31-44-1140 Left Handle Half	(1)
	12	06-55-0835 8-32 Hex Nut	(6)
	13	22-56-0455 Terminal Block	(1)
	14	44-60-0530 Ground Pin	(1)
	15	10-98-6420 Caution Label (Not Shown)	(1)
★	16	02-04-0645 Ball Bearing	(1)
	17	18-10-0130 120V Field	(1)
★	18	16-10-0605 120V D.I. Armature - (Incl. Fig. No. 19)	(1)
	19	22-84-0440 Fan Assembly	(1)
	20	02-04-0848 Ball Bearing	(1)
	21	06-95-0180 7-18 x 2" Pan Hd. Plastite Screw	(2)
	22	44-76-0130 Cord Protector	(1)
	23	22-64-1120 Cord Set	(1)
	24	28-28-1720 Diaphragm	(1)
	25	02-04-0645 Ball Bearing	(1)
	26	45-88-0712 Thrust Washer	(2)
★	27	32-10-1041 Clutch Gear Assembly	(1)
	28	40-50-6600 Separator Spring	(1)

FIG.	PART NO.	DESCRIPTION OF PART	NO. REQ.
★	29	42-66-0766 Clutch Chuck Assy. (Incl. Fig. Nos. 30 Thru 32)	(1)
	30	02-50-2400 Needle Bearing	(1)
	31	02-02-0130 Steel Ball	(1)
	32	40-50-0510 Bit Retaining Spring	(1)
	33	02-50-4220 Needle Roller Bearing	(1)
★	34	45-06-0106 Oil Seal	(1)
	35	28-14-1581 Gear Case	(1)
	36	06-95-0173 7-18 x 1-1/4" Pan Hd. Plastite Screw	(1)
	37	06-95-0145 7 x 1-3/4" Pan Hd. Pozi Drive Screw	(2)
	38	44-90-0400 Locator Ring	(1)
	39	49-26-1030 Drywall Locator Assembly	(1)
	40	48-32-3065 Magnetic Bit Holder	(1)
	41	48-32-1050 Insert Bit	(1)
	42	48-67-0100 Belt Clip	(1)

**NOTES:**

Screws Fig. No. 1, Fig. No. 21 & Fig. Nos. 36 & 37 Should Be Torqued To 15-20 Lbs.

**LUBRICATION**

Use 1/8 Oz. Of Type "E" Grease In Gear Case