



SERVICE PARTS LIST

BULLETIN NO.
54-42-5184

SPECIFY CATALOG NO. AND SERIAL NO. WHEN ORDERING PARTS		REVISED BULLETIN 54-42-5183	DATE May '93
T.S.C. REV. DRYWALL SCREWDRIVER			
CATALOG NO. 6750-1	STARTING SERIAL NO. 464-370000 or 464A	WIRING INSTRUCTION 58-01-1361	

EXAMPLE:
Component Parts (Small #)
Are Included When Ordering
The Assembly (Large #).

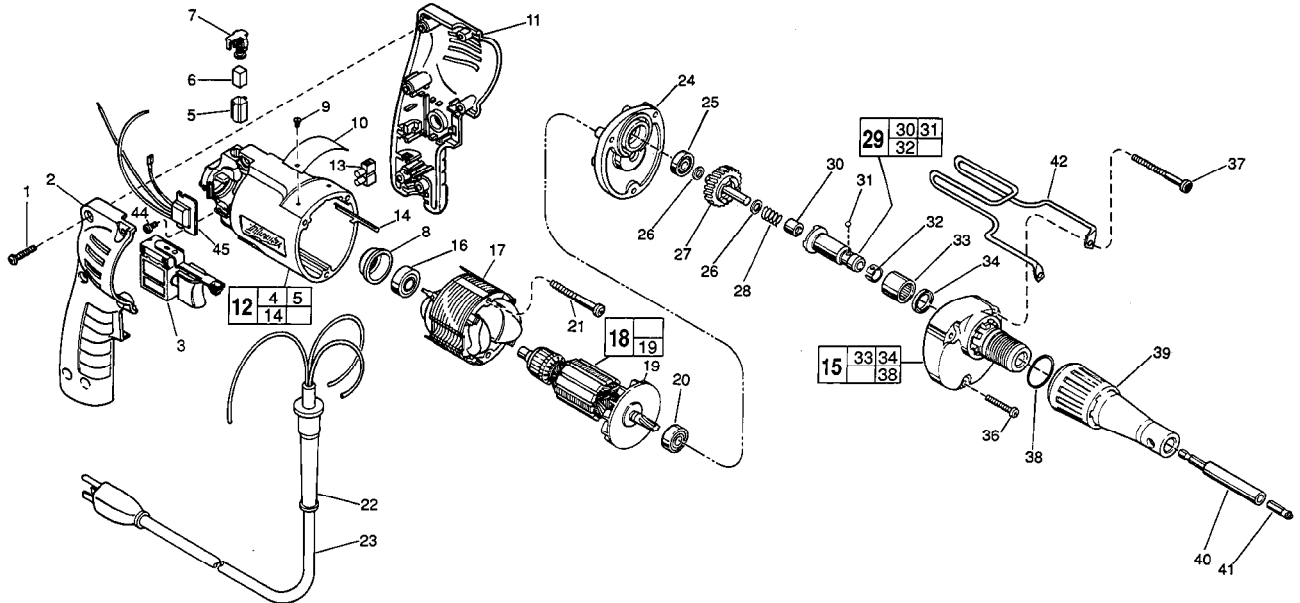


FIG.	PART NO.	DESCRIPTION OF PART	NO. REQ.
	1	8-16 x 3/4" Pan Hd. Slit. Plast. T-20	(6)
★	2	Right Handle Half	(1)
★	3	Speed Control Switch	(1)
	4	Ground Wire Assembly (Not Shown)	(1)
★	5	Brush Tube	(2)
	6	Carbon Brush	(2)
	7	Brush Spring Assembly	(2)
	8	Bearing Cup	(1)
	9	Nameplate Screw	(2)
	10	Service Nameplate	(1)
★	11	Left Handle Half	(1)
★	12	Motor Housing Assembly	(1)
	13	Terminal Block	(1)
	14	Ground Pin	(1)
	15	Gear Case Assembly	(1)
	16	Ball Bearing	(1)
	17	120 Volt Field	(1)
	18	120 Volt Armature	(1)
	19	Fan Assembly	(1)
	20	Ball Bearing	(1)
	21	7-18 x 2" Pan Hd. Slit. Plast. T-20	(2)
	22	Cord Protector	(1)
★	23	Cord Set	(1)
	24	Diaphragm	(1)
	25	Ball Bearing	(1)
	26	Thrust Washer	(2)
	27	Clutch Gear Assembly	(1)
	28	Separator Spring	(1)

FIG.	PART NO.	DESCRIPTION OF PART	NO. REQ.
	29	42-66-0766 Clutch Chuck Assembly	(1)
	30	02-50-2400 Needle Bearing	(1)
	31	02-02-0130 Steel Ball	(1)
	32	40-50-0510 Bit Retaining Spring	(1)
	33	02-50-4220 Needle Roller Bearing	(1)
	34	45-06-0106 Oil Seal	(1)
	35	28-14-1581 Gear Case	(1)
★	36	06-82-7344 7-18 x 1-1/2" Pan Hd. Slit. Plast. T-20	(1)
★	37	06-82-7380 7-18 x 1-7/8" Pan Hd. Slit. Plast. T-20	(2)
	38	44-90-0400 Locator Ring	(1)
	39	49-26-1030 Drywall Locator Assembly	(1)
	40	48-32-3065 Magnetic Bit Holder	(1)
	41	48-32-1050 Insert Bit	(1)
★	42	42-70-5120 Belt Clip	(1)
	44	06-82-7212 4-20 x 1/4" Pan Hd. Slit. Plast. T-10	(1)
★	45	14-20-0650 Remote Electronic Assembly	(1)
		10-98-6420 Warning Label	(1)

FIG. LUBRICATION
15 1/8 Oz. Type "E" Grease, No. 49-08-4122. Place Near Clutch Chuck in Gear Case.

FIG. NOTES
1 Torque To 18-22 In./Lbs.
21,36,37 Torque To 15-20 In./Lbs.
44 Torque To 3-5 In./Lbs.
8 Place in motor housing before inserting armature.
30,33 Press only on end with manufacturer ID.
33 Press flush to casting surface.
30 Press 11/64" from clutch face.
16,20,25 Seal towards armature.
34 Lip towards front of gear case.

MILWAUKEE ELECTRIC TOOL CORPORATION
13135 W. LISBON RD., BROOKFIELD, WI 53005