



SERVICE PARTS LIST

BULLETIN NO.
54-42-0135

SPECIFY CATALOG NO. AND SERIAL NO. WHEN ORDERING PARTS		REVISED BULLETIN 54-42-0134	DATE May '93
D.I. DRYWALL SCREWDRIVER		WIRING INSTRUCTION	
CATALOG NO. 6753-1	STARTING SERIAL NO. 704-385000 or 704A	58-01-1361	

EXAMPLE:
Component Parts (Small #)
Are Included When Ordering
The Assembly (Large #).

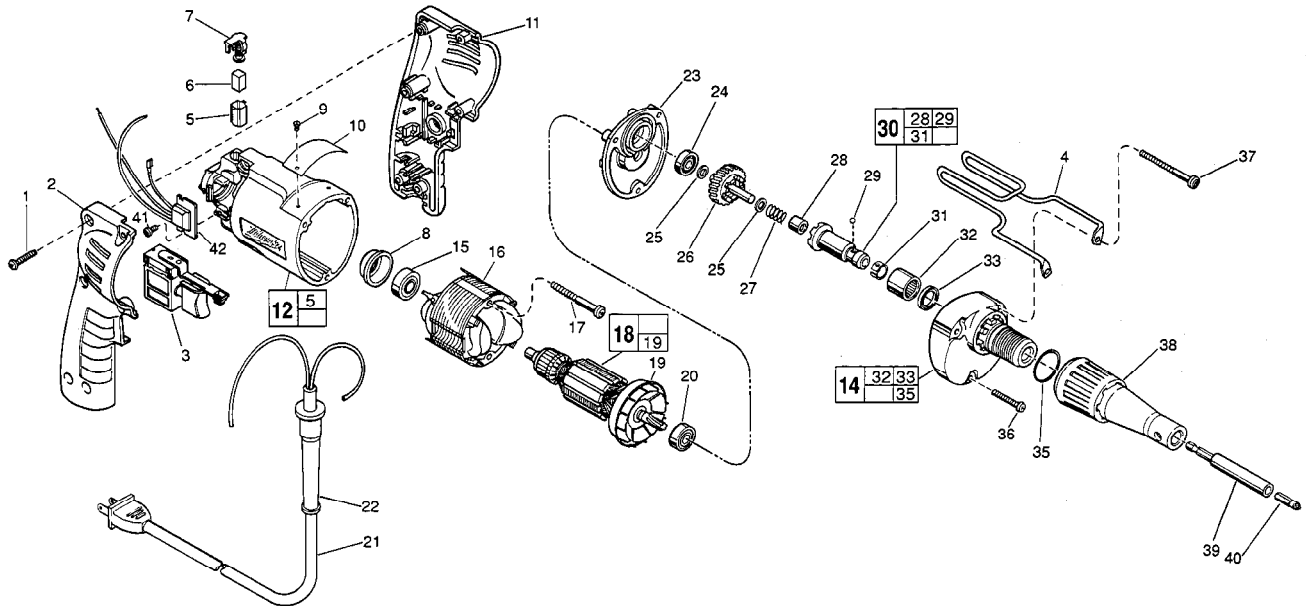


FIG.	PART NO.	DESCRIPTION OF PART	NO. REQ.	FIG.	PART NO.	DESCRIPTION OF PART	NO. REQ.
	1	8-16 x 3/4" Pan Hd. Slit. Plast. T-20	(6)	30	42-66-0766	Clutch Chuck Assembly	(1)
★	2	Right Handle Half	(1)	31	40-50-0510	Bit Retaining Spring	(1)
★	3	Speed Control Switch	(1)	32	02-50-4220	Needle Roller Bearing	(1)
	4	Belt Clip	(1)	33	45-06-0106	Oil Seal	(1)
★	5	Brush Tube	(2)	35	44-90-0400	Locator Ring	(1)
	6	Carbon Brush	(2)	36	06-82-7296	7-18 x 1" Pan Hd. Slit. Plast. T-20	(1)
	7	Brush Spring Assembly	(2)	★	37	7-18 x 1-3/4" Pan Hd. Slit. Plast T-20	(2)
	8	Bearing Cup	(1)	38	49-26-1030	Drywall Locator Assembly	(1)
	9	Nameplate Screw	(2)	39	48-32-3065	Magnetic Bit Holder	(1)
	10	Service Nameplate	(1)	40	48-32-1050	Insert Bit	(1)
★	11	Left Handle Half	(1)	41	06-82-7212	4-20 x 1/4" Pan Hd. Slit. Plast. T-10	(1)
★	12	Motor Housing Assembly	(1)	★	42	Remote Electronic Assembly	(1)
	14	Gear Case Assembly	(1)		10-98-6005	Warning Label	(1)
	15	Ball Bearing	(1)				
	16	120 Volt Field	(1)	FIG. LUBRICATION			
	17	7-18 x 2" Pan Hd. Slit. Plast. T-20	(2)	14	1/8 Oz. Type "E" Grease, No. 49-08-4122.	Place Near Clutch Chuck In Gear Case.	
	18	120 Volt D.I. Armature	(1)				
	19	Fan Assembly	(1)	FIG. NOTE			
	20	Ball Bearing	(1)	1	Torque To 18-22 In./Lbs.		
	21	Cord Set	(1)	17,36,37	Torque To 15-20 In./Lbs.		
	22	Cord Protector	(1)	41	Torque To 3-5 In./Lbs.		
	23	Diaphragm	(1)	8	Place in motor housing before inserting armature.		
	24	Ball Bearing	(1)	28,32	Press only on end with manufacturer ID.		
	25	Thrust Washer	(2)	32	Press flush to casting surface.		
	26	Clutch Gear Assembly	(1)	28	Press 11/64" from clutch face.		
	27	Separator Spring	(1)	15,20,24	Seal towards armature.		
	28	Needle Bearing	(1)	33	Lip towards front of gear case.		
	29	Steel Ball	(1)				

MILWAUKEE ELECTRIC TOOL CORPORATION
13135 W. LISBON RD., BROOKFIELD, WI 53005