



# SERVICE PARTS LIST

**BULLETIN NO.**  
55-42-5551

SPECIFY CATALOG NO. AND SERIAL NO. WHEN ORDERING PARTS		REVISED BULLETIN	DATE
D.I. DRYWALL SCREWDRIVER		55-42-5550	Oct '93
CATALOG NO. 6755-4	SERIAL NUMBER 792A	WIRING INSTRUCTION 58-03-1380	



**EXAMPLE:**  
Component Parts ( Small #) Are Included  
When Ordering The Assembly (Large #).

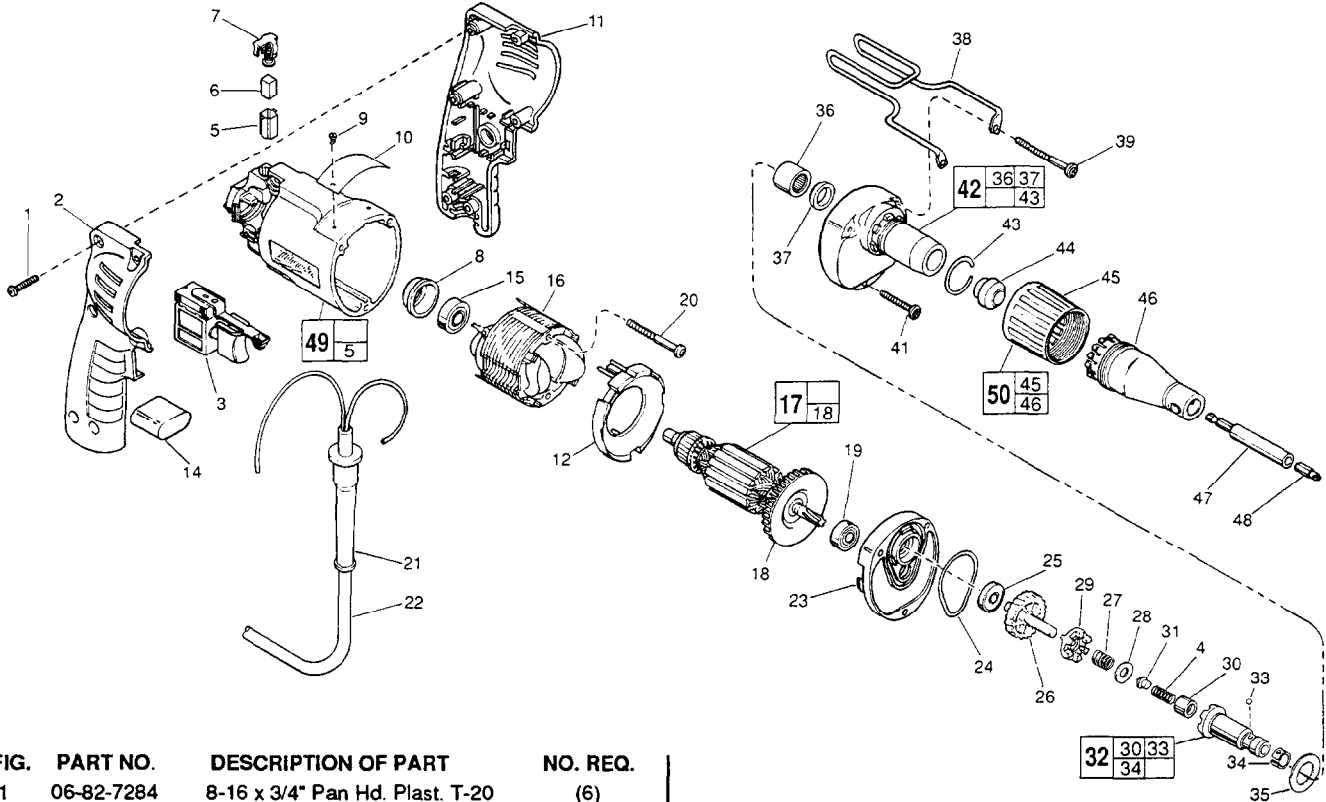


FIG.	PART NO.	DESCRIPTION OF PART	NO. REQ.	
	1	06-82-7284	8-16 x 3/4" Pan Hd. Plast. T-20	(6)
	2	31-44-1745	Right Handle Half	(1)
	3	23-66-2075	Switch	(1)
★	4	40-50-0095	Separator Spring	(1)
	5	22-20-0830	Brush Tube	(2)
	6	22-16-0375	Carbon Brush	(2)
★	7	23-52-1570	Brush Spring Assembly	(2)
	8	22-72-0100	Bearing Cup	(1)
	9	06-85-0200	Nameplate Screw	(2)
	10	12-99-1010	Service Nameplate	(1)
	11	14-34-0470	Handle Assembly	(1)
	12	42-14-0360	Baffle	(1)
	14	14-20-0530	Capacitor Assembly	(1)
	15	02-04-0645	Ball Bearing	(1)
	16	18-12-0150	Field	(1)
★	17	16-14-0671	Armature Assembly	(1)
	18	22-84-0840	Fan Assembly	(1)
	19	02-04-0851	Ball Bearing	(1)
	20	06-82-7393	7-18 x 2" Pan Hd. Slit. Plast. T-20	(2)
	21	44-76-0210	Cord Protector	(1)
	22	22-64-4535	Cord Set	(1)
	23	25-28-1990	Diaphragm	(1)
	24	43-44-0940	Gasket	(1)
	25	02-04-0645	Ball Bearing	(1)
★	26	32-10-1050	Clutch Gear Assembly	(1)
★	27	40-50-8515	Bias Spring	(1)
★	28	45-88-0555	Thrust Washer	(1)
★	29	42-70-0310	Bias Clutch	(1)
	30	02-50-2400	Needle Bearing	(1)
★	31	44-60-0505	Thrust Pin	(1)
★	32	42-66-0710	Clutch Chuck Assembly	(1)
	33	02-02-0130	9/64" Steel Ball	(1)
	34	40-50-0510	Retaining Spring	(1)
	35	45-88-8350	Stop Washer	(1)
	36	02-50-4220	Needle Bearing	(1)

FIG.	PART NO.	DESCRIPTION OF PART	NO. REQ.	
	37	45-06-0570	Oil Seal	(1)
★	38	42-70-5120	Belt Clip	(1)
	39	06-82-7368	7-18 x 1-3/4" Pan Hd. Slit. Plast. T-20	(2)
	41	06-82-7320	7-18 x 1-1/4" Pan Hd. Slit. Plast. T-20	(1)
	42	14-30-0435	Gear Case Assembly	(1)
	43	44-90-0401	Locator Ring	(1)
	44	30-37-0045	Guide	(1)
	45	31-58-0510	Locator Sleeve	(1)
	46	31-51-0090	Locator	(1)
	47	48-32-3065	Magnetic Bit Holder	(1)
	48	48-32-1050	Insert Bit - #2 Phillips	(1)
	49	14-38-0430	Motor Housing Assembly	(1)
	50	49-26-1035	Locator Assembly	(1)

**FIG. LUBRICATION**

- 17,26,27 1/64 Oz. Type "E" Grease, No. 49-08-4122, On Bias Spring.
- 1/64 Oz. In The Clutch Pockets Of The Clutch Gear.
- 1/64 Oz. On Each Side Of Armature Pinion At Clutch Gear.
- 42 3/16 Oz. In Pinion Pocket Of Gear Case.

Apply A Light Film Of "E" Grease To Ball And Needle Bearing Pockets Of The Diaphragm And Gear Case Prior To Pressing Bearings. Apply A Light Film Of "E" Grease To The Lead Chamfer Of Clutch Chuck, Thrust Pin And Separator Spring Prior To Assembly.

**FIG. NOTES**

- 1 Torque To 18-22 In./Lbs.
- 20,41,39 Torque To 15-20 In./Lbs.

**MILWAUKEE ELECTRIC TOOL CORPORATION**  
13135 W. LISBON RD., BROOKFIELD, WI 53005