



SERVICE PARTS LIST

BULLETIN NO.
55-42-5552

SPECIFY CATALOG NO. AND SERIAL NO. WHEN ORDERING PARTS		REVISED BULLETIN	DATE
D.I. DRYWALL SCREWDRIVER		55-42-5551	Nov. '94
CATALOG NO. 6755-4	SERIAL NUMBER 792B	WIRING INSTRUCTION 58-03-1380	



EXAMPLE:
Component Parts (Small #) Are Included
When Ordering The Assembly (Large #).

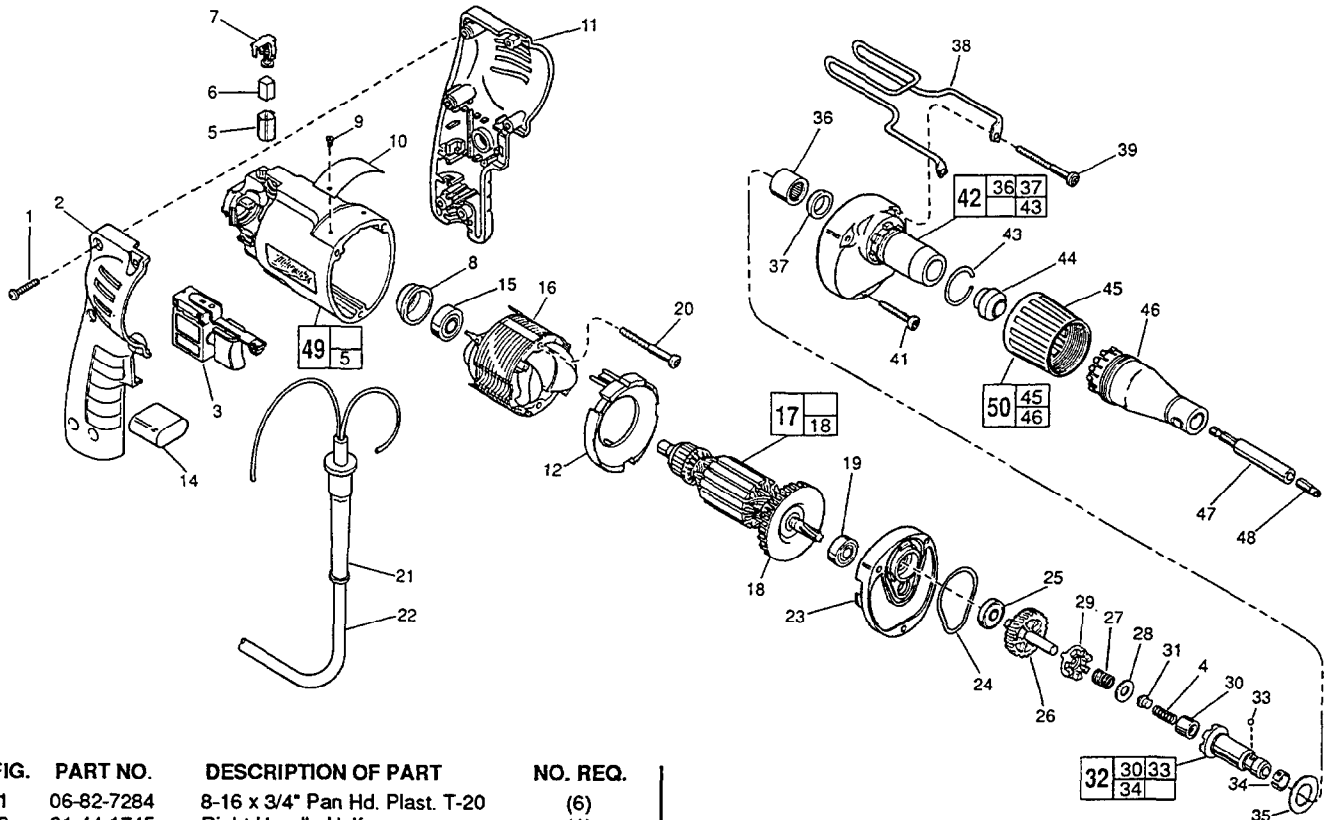


FIG.	PART NO.	DESCRIPTION OF PART	NO. REQ.
	1	8-16 x 3/4" Pan Hd. Plast. T-20	(6)
	2	Right Handle Half	(1)
	3	Switch	(1)
	4	Separator Spring	(1)
	5	Brush Tube	(2)
	6	Carbon Brush	(2)
	7	Brush Spring Assembly	(2)
	8	Bearing Cup	(1)
★	9	Nameplate Rivet	(2)
	10	Service Nameplate	(1)
	11	Handle Assembly	(1)
	12	Baffle	(1)
	14	Capacitor Assembly	(1)
	15	Ball Bearing	(1)
	16	Field	(1)
	17	Armature Assembly	(1)
	18	Fan Assembly	(1)
	19	Ball Bearing	(1)
	20	7-18 x 2" Pan Hd. Slit. Plast. T-20	(2)
	21	Cord Protector	(1)
	22	Cord Set	(1)
	23	Diaphragm	(1)
	24	Gasket	(1)
	25	Ball Bearing	(1)
	26	Clutch Gear Assembly	(1)
	27	Bias Spring	(1)
	28	Thrust Washer	(1)
	29	Bias Clutch	(1)
	30	Needle Bearing	(1)
	31	Thrust Pin	(1)
	32	Clutch Chuck Assembly	(1)
	33	9/64" Steel Ball	(1)
	34	Retaining Spring	(1)
	35	Stop Washer	(1)
	36	Needle Bearing	(1)

FIG.	PART NO.	DESCRIPTION OF PART	NO. REQ.
	37	Oil Seal	(1)
	38	Belt Clip	(1)
	39	7-18 x 1-3/4" Pan Hd. Slit. Plast. T-20	(2)
	41	7-18 x 1-1/4" Pan Hd. Slit. Plast. T-20	(1)
	42	Gear Case Assembly	(1)
	43	Locator Ring	(1)
	44	Guide	(1)
	45	Locator Sleeve	(1)
	46	Locator	(1)
	47	Magnetic Bit Holder	(1)
	48	Insert Bit - #2 Phillips	(1)
★	49	Motor Housing Assembly	(1)
	50	Locator Assembly	(1)

FIG. LUBRICATION
 17,26,27 1/64 Oz. Type "E" Grease, No. 49-08-4122, On Bias Spring.
 1/64 Oz. In The Clutch Pockets Of The Clutch Gear.
 1/64 Oz. On Each Side Of Armature Pinion At Clutch Gear.
 42 3/16 Oz. In Pinion Pocket Of Gear Case.

Apply A Light Film Of "E" Grease To Ball And Needle Bearing Pockets Of The Diaphragm And Gear Case Prior To Pressing Bearings. Apply A Light Film Of "E" Grease To The Lead Chamfer Of Clutch Chuck, Thrust Pin And Separator Spring Prior To Assembly.

FIG. NOTES
 1 Torque To 18-28 In./Lbs.
 20,41,39 Torque To 15-20 In./Lbs.

MILWAUKEE ELECTRIC TOOL CORPORATION
 13135 W. LISBON RD., BROOKFIELD, WI 53005