



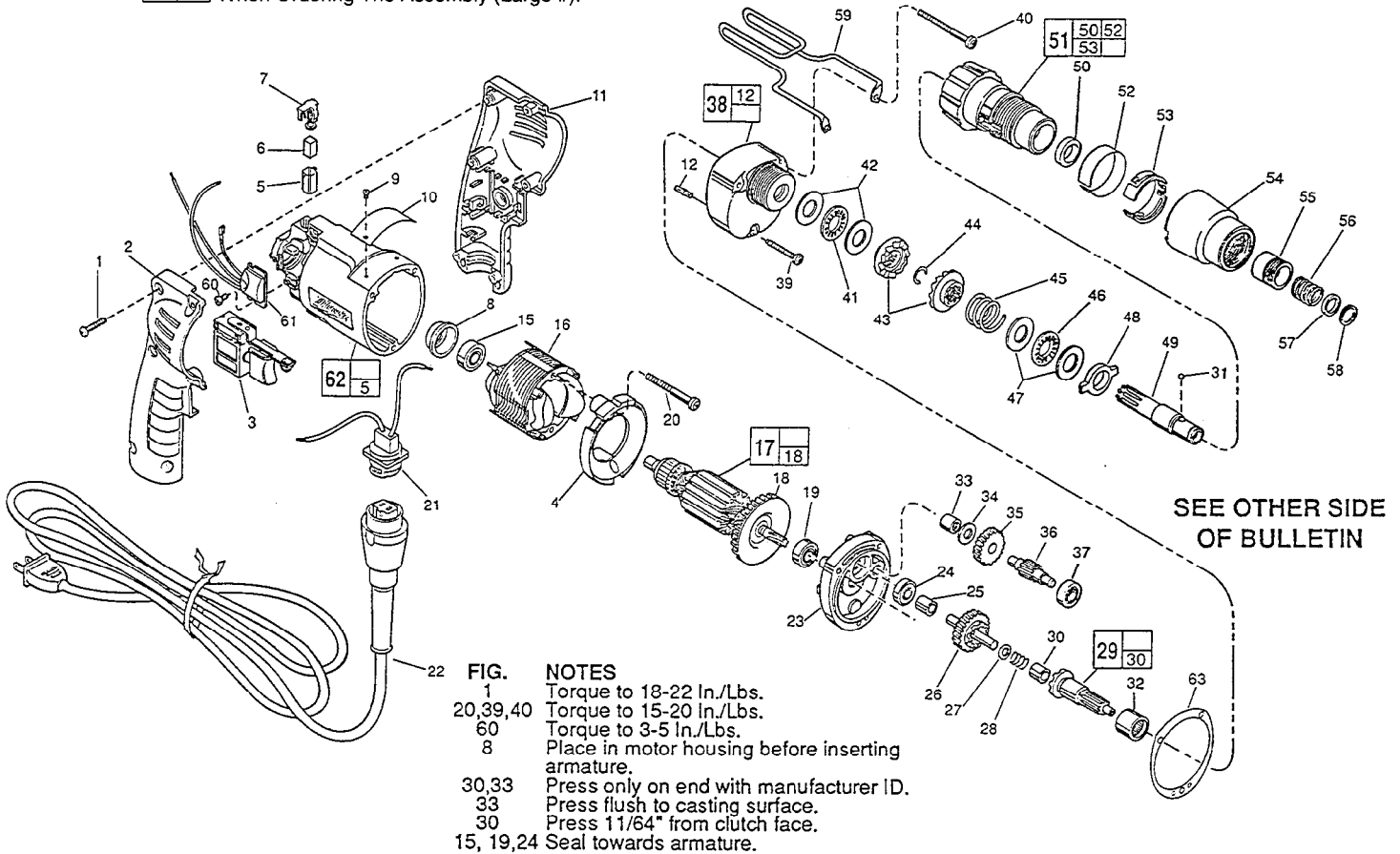
SERVICE PARTS LIST

BULLETIN NO.
54-42-0360

SPECIFY CATALOG NO. AND SERIAL NO. WHEN ORDERING PARTS		REVISED BULLETIN 54-42-0359	DATE June '96
ADJUSTABLE TORQUE SCREWDRIVER		WIRING INSTRUCTION 58-01-0032	
CATALOG NO. 6783-1	STARTING SERIAL NO. 471D		

EXAMPLE:

Component Parts (Small #) Are Included
When Ordering The Assembly (Large #).



SEE OTHER SIDE
OF BULLETIN

- FIG. NOTES**
- 1 Torque to 18-22 In./Lbs.
 - 20,39,40 Torque to 15-20 In./Lbs.
 - 60 Torque to 3-5 In./Lbs.
 - 8 Place in motor housing before inserting armature.
 - 30,33 Press only on end with manufacturer ID.
 - 33 Press flush to casting surface.
 - 30 Press 11/64" from clutch face.
 - 15, 19,24 Seal towards armature.

FIG. PART NO.	DESCRIPTION OF PART	NO. REQ.
1	06-82-7284	8-16 x 3/4" Pan Hd. Slit. Plast. T-20 (6)
2	31-44-1845	Right Handle Half (1)
3	23-66-2145	Speed Control Switch (1)
4	42-14-0380	Baffle (1)
5	22-20-0830	Brush Tube (2)
6	22-16-0275	Carbon Brush (2)
7	23-52-1560	Brush Spring Assembly (2)
8	22-72-0100	Bearing Cup (1)
★ 9	06-72-1720	Nameplate Rivet (2)
10	12-99-0860	Service Nameplate (1)
11	31-44-1840	Left Handle Half (1)
12	06-65-0825	1/8 x 1/2 Groove Pin No. 5 (1)
15	02-04-0645	Ball Bearing (1)
16	18-11-0150	120 V. Field (1)
17	16-10-0690	120 V. Armature (1)
18	22-84-0880	Fan Assembly (1)
19	02-04-0851	Ball Bearing (1)
20	06-82-7203	7-18 x 2-1/8" Pan Hd. Slit. Plastite T-20 (2)
21	22-56-0665	Blade Housing Assembly (1)
22	48-76-5010	Cord Set (1)
23	28-28-1961	Diaphragm (1)
24	02-04-0645	Ball Bearing (1)
25	45-36-1280	Spacer (1)
26	32-10-4045	Clutch Gear Assembly (1)
27	45-88-0712	Thrust Washer (1)
28	40-50-6600	Separator Spring (1)
29	14-73-0250	Clutch Shaft Assembly (1)
30	02-50-2400	Needle Bearing (1)
31	02-02-0130	Steel Ball (1)
32	02-50-4225	Needle Roller Bearing (1)
33	02-50-2410	Needle Bearing (1)
34	45-88-7990	Thrust Washer (1)
35	32-40-1612	Intermediate Gear (1)
36	36-66-4101	Intermediate Pinion Shaft (1)
37	02-04-0640	Ball Bearing (1)
38	14-30-0600	Gear Case Assembly (1)

FIG. PART NO.	DESCRIPTION OF PART	NO. REQ.
39	06-82-7344	7-18 x 1-1/2" Pan Hd. Slit. Plast. T-20 (1)
40	06-82-7464	7-18 x 2-3/4" Pan Hd. Slit. Plast. T-20 (2)
41	02-80-1210	Thrust Bearing (1)
42	45-88-0510	Thrust Bearing Washer (2)
43	42-70-5016	Drive Clutch (2)
44	34-60-0545	Retaining Ring (1)
45	40-50-8000	Clutch Spring (1)
46	02-80-6020	Thrust Bearing (1)
47	45-88-7150	Thrust Bearing Washer (2)
48	44-90-4280	Adjustment Ring (1)
49	42-66-0676	Chuck Shaft (1)
50	45-06-0106	Oil Seal (1)
51	14-08-0190	Clutch Housing Assembly (1)
52	10-79-3100	Torque Setting Label (1)
53	42-16-0140	Adjustment Band (1)
54	42-76-0460	Adjustment Collar (1)
55	42-76-0390	Locking Collar (1)
56	40-50-8005	Compression Spring (1)
57	45-36-1300	Spacer (1)
58	34-60-2390	Retaining Ring (1)
59	42-70-5080	Belt Clip (1)
60	06-82-7212	4-20 x 1/4" Pan Hd. Slit. Plastite T-10 (1)
61	14-20-0750	Remote Electronic Assembly (1)
★ 62	14-38-0591	Motor Housing Assembly (1)
63	43-44-0925	Gasket (1)
	49-66-3016	5/16" Hex Socket (1)

FIG. LUBRICATION

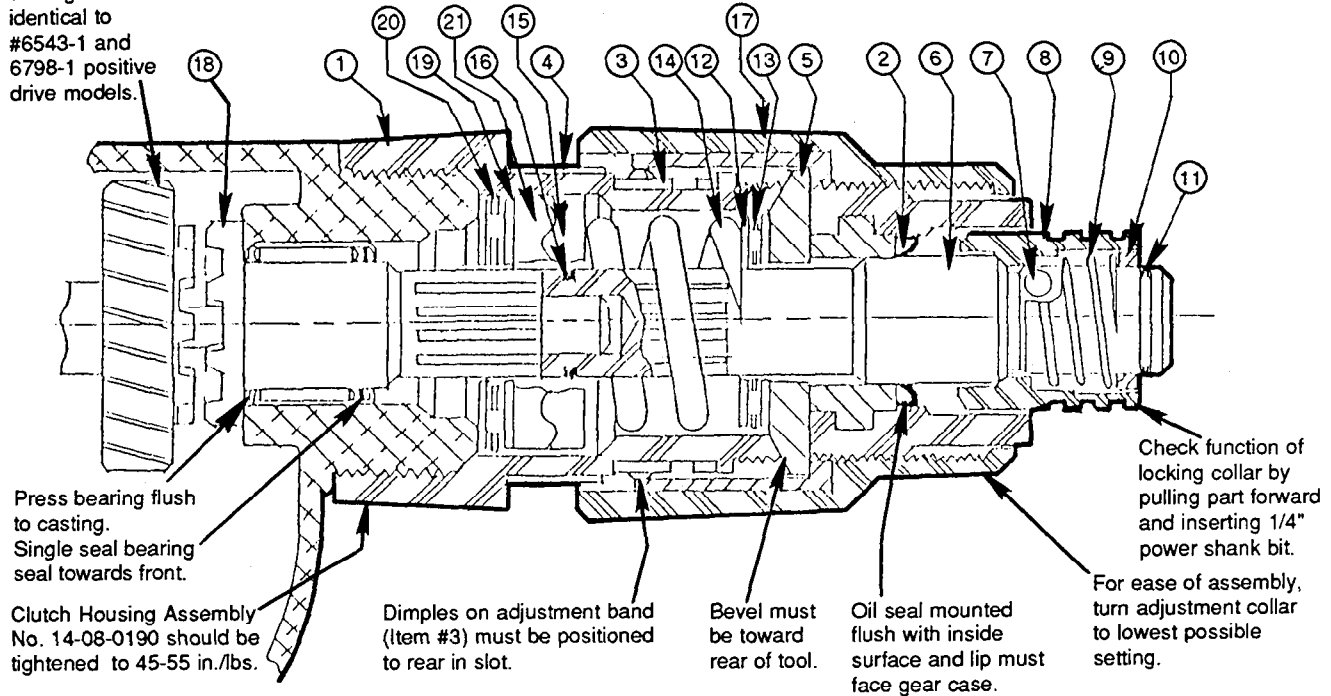
- 38 1-1/2 Oz. Type "E" Grease, No. 49-08-4122.
- 43 1/16 Oz. Type "F" Grease, No. 49-08-4160 On Clutch Faces.
- 41,46,50 Apply Small Amount Of "F" Grease, No. 49-08-4160.
- 48 Apply Small Amount Of "F" Grease, No. 49-08-4160 On Tabs.

MILWAUKEE ELECTRIC TOOL CORPORATION
13135 W. LISBON RD., BROOKFIELD, WI 53005



**PARTS LIST IN ORDER OF ASSEMBLY
ADJUSTABLE TORQUE SCREWDRIVER
CAT. NO. 6583-1 AND 6783-1**

Clutch gear and other gears identical to #6543-1 and 6798-1 positive drive models.



LUBRICATION

Apply 1/16 oz. Type "F" Grease on clutch faces of drive clutch (#15 & #21). Apply small amount of Type "F" Grease on trust bearings (#13 & #20, oil seal lip #2 and tabs of adjustment ring #5).

Drive clutches must slide back and forth freely on shaft splines. Defective splines that stick will not function properly.

	ITEM NO.	PART NO.	DESCRIPTION	
Clutch Housing Assembly No. 14-08-0190	1	43-76-0550	Clutch Housing (Includes Bushing No. 42-40-0920)	Clutch Sub-Assembly
	2	45-06-0106	Oil Seal	
	3	42-16-0140	Adjustment Band	
Sub-Assembly	4	10-79-3100	Torque Setting Label	
	5	44-90-4280	Adjustment Ring	
	6	42-66-0676	Chuck Shaft	
	7	02-02-0130	Steel Ball	
	8	42-76-0390	Locking Collar	
	9	40-50-8005	Spring	
	10	45-36-1300	Spacer	
	11	34-60-2390	Retaining Ring	
	12	45-88-7150	Thrust Washers (2 each) (Place on each side of Item # 13)	
	13	02-80-6020	Thrust Bearing	
14	40-50-8000	Clutch Spring		
15	42-70-5016	Drive Clutch		
16	34-60-0545	Retaining Ring		
	17	42-76-0460	Adjustment Collar (Includes Insert No. 43-84-0740)	Not In Order Of Assembly
	18	14-73-0250	Clutch Shaft Assembly (Includes Clutch Shaft No. 36-14-0661 and Needle Bearing No. 02-50-2400)	
	19	45-88-0510	Thrust Bearing Washers (2 each) (Place on each side of Item # 20)	
	20	02-80-1210	Thrust Bearing	
	21	42-70-5016	Drive Clutch	