



SERVICE PARTS LIST

BULLETIN NO.
54-42-5426

SPECIFY CATALOG NO. AND SERIAL NO. WHEN ORDERING PARTS		REVISED BULLETIN 54-42-5425	DATE June '79
MAGNUM SCREW-SHOOTER			
CATALOG NO. 6794-1	STARTING SERIAL NO. 547-18800	WIRING INSTRUCTION 58-01-0120	

0-2500 R.P.M.
4.5 AMPS

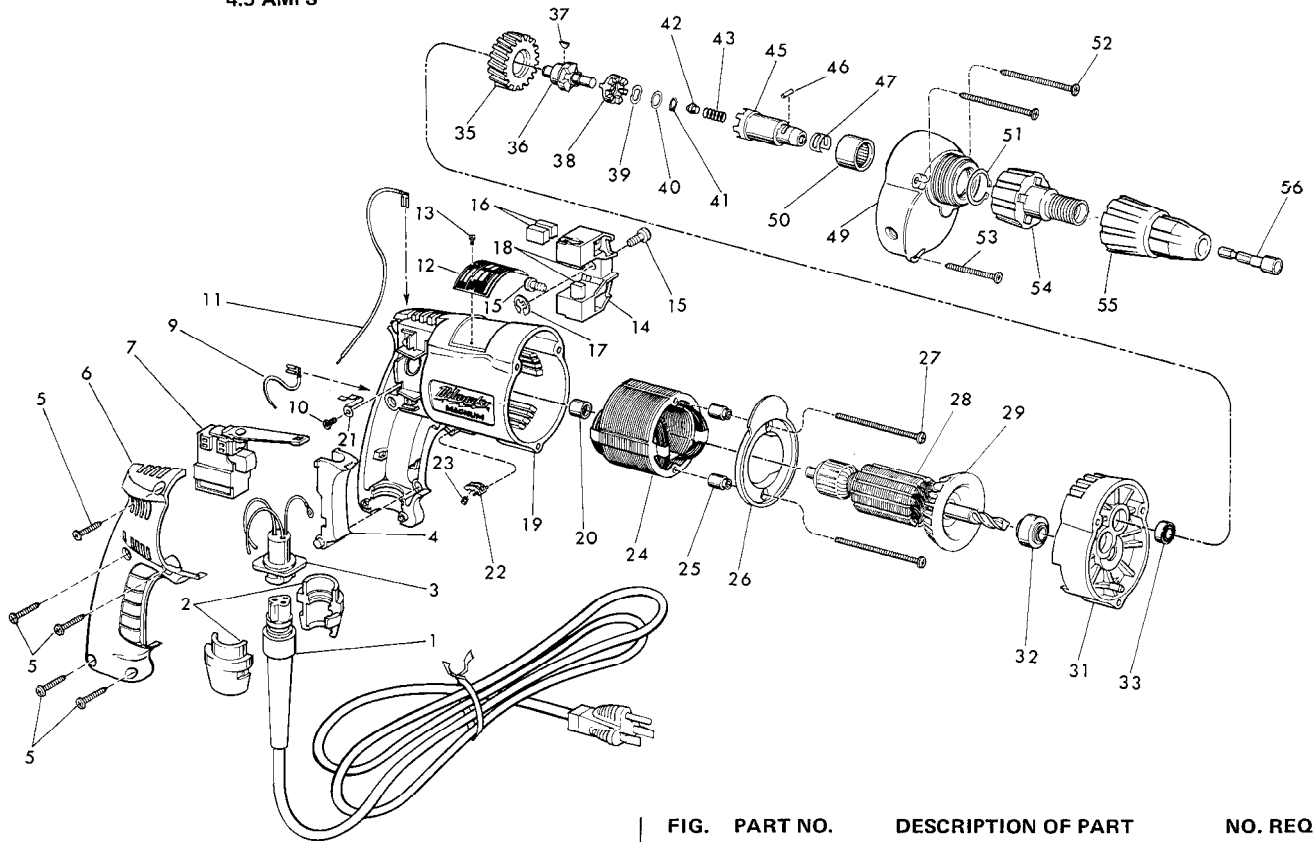


FIG.	PART NO.	DESCRIPTION OF PART	NO. REQ.
	1	48-76-3008 Cord Set (Includes Fig. No. 2)	(1)
	2	44-40-0440 Cord Nut	(2)
	3	22-56-0300 Pin Housing Assembly	(1)
	4	45-72-0080 Trigger	(1)
	5	06-95-0220 8-18x3/4 Pan Hd. Thread Form Screw	(5)
★	6	31-15-0101 Handle Cover	(1)
★	7	23-66-0981 Reversing Speed Control Switch	(1)
★	8	10-98-5985 Warning Label (Not Shown)	(1)
	9	23-94-9625 2-1/4" Lead Assembly	(1)
	10	06-95-5100 6-32x1/4 Phillip Pan Hd. Screw	(1)
	11	23-94-9630 7" Lead Assembly	(1)
★	12	12-99-0081 Nameplate Blank	(1)
	13	06-85-0200 Nameplate Screw	(2)
	14	22-22-0350 Brush Holder Assy. (Incl. Fig. Nos. 15 thru 17)	(1)
	15	31-75-0010 Brush Holder Screw	(2)
	16	22-16-0270 Carbon Brush (Spares)	(2)
	17	34-60-0500 1/4" Ext. Retaining Ring	(1)
★	19	14-38-0320 Motor Housing Assy. (Incl. Fig. Nos. 20 & 21)	(1)
	20	02-50-2025 Needle Thrust Bearing	(1)
	21	23-74-0530 Ground Terminal	(1)
	22	42-42-0150 Lock Button	(1)
	23	40-50-0085 Lock Button Spring	(1)
	24	18-10-0040 120 Volt Field	(1)
	25	45-36-0810 Baffle Spacer	(2)
	26	31-05-0060 Baffle	(1)
	27	06-95-0280 8-18x2-3/8 Pan Hd. Thread Form Screw	(2)
	28	16-10-0205 120 Volt Armature (Incl. fig. No. 29)	(1)

FIG.	PART NO.	DESCRIPTION OF PART	NO. REQ.
	29	22-84-0650 Fan Assembly	(1)
	30	14-13-0310 Diaphragm Assy. (Fig. Nos. 31 thru 33)	(1)
	31	31-20-0035 Diaphragm	(1)
	32	02-04-0885 Ball Bearing	(1)
	33	02-08-0215 Ball Bearing	(1)
	34	32-10-0150 Clutch Gear Assy. (Fig. Nos. 35 thru 41)	(1)
	35	32-75-2750 Spindle Gear	(1)
	36	36-14-0081 Gear Shaft	(1)
	37	06-42-0400 Woodruff Key	(1)
	38	42-70-5030 Drive Clutch	(1)
	39	45-88-0700 Shakeproof Spring Washer	(1)
	40	45-88-5240 Flat Washer	(1)
	41	34-60-0510 External Retaining Ring	(1)
	42	44-60-0500 Thrust Pin	(1)
	43	40-50-0080 Separator Spring	(1)
	44	14-73-0090 Chuck Shaft Assy. (Fig. Nos. 45 thru 47)	(1)
	45	42-66-0510 Chuck Shaft	(1)
	46	02-55-0150 Loose Roller Bearing	(1)
	47	40-50-1450 Bit Retaining Spring	(1)
	48	14-30-0030 Gear Case Assy. (Fig. Nos. 49 & 51)	(1)
	49	31-40-0035 Gear Case	(1)
	50	02-50-4050 Needle Bearing	(1)
	51	34-80-0800 Internal Retaining Ring	(1)
	52	06-95-0270 8-18x2-1/8 Pan Hd. Thread Form Screw	(2)
	53	06-95-0250 8-18x1-5/8 Pan Hd. Thread Form Screw	(1)
	54	48-32-2505 Bit Housing	(1)
	55	49-26-0250 Locator 1/4" Hex Socket	(1)
		49-26-0312 Locator 5/16" Hex Socket	(1)
		49-26-0375 Locator 3/8" Hex Socket	(1)
		49-26-0600 Locator 7/16" Hex Socket	(1)
	56	49-66-3016 5/16" Socket Extension - Magnetic	(1)